

Converting Colors

HunterLab(44.1490, 53.9791,
4.7931)

Have a look what the booklet for
HunterLab(44.1490, 53.9791,
4.7931) contains.

HunterLab(44.2552, 54.0806, 4.8346)	3
<i>Conversions</i>	4
<i>Details</i>	6
<i>Harmonies</i>	12
<i>Previews</i>	24
<i>Color Blindness Simulation</i>	28
<i>CSS Examples</i>	31

Color

**HunterLab(44.2552, 54.0806,
4.8346)**

Conversions

Conversions Part 1

Format	Color
Hex	D44577
RGB	212, 69, 119
RGB Percent	83%, 27%, 47%
CMY	0.1686, 0.7294, 0.5333
CMYK	0.00, 0.67, 0.44, 0.17
HSL	339°, 62%, 55%
HSV	339°, 67%, 83%
XYZ	32.6093, 19.5852, 19.5144
YIQ	117.4570, 69.1780, 45.8660

Conversions

Conversions Part 2

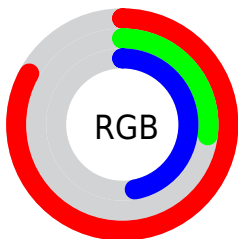
Format	Color
R_{YB}	212, 69, 119
Decimal	13911415
CIE _{Lab}	51.37, 59.66, 3.39
CIE _{LCh}	51, 59.756, 3.249
Yxy	19.5863, 0.4547, 0.2731
Android (android.graphics.Color)	4292101495 (0xFFD44577)
YUV	117.4570, 0.7607, 82.9142
Hunter-Lab	44.2552, 54.0806, 4.8346

Details

The HunterLab color **44.2552, 54.0806, 4.8346** is a dark color, and the websafe version is hex **CC3366**. The color can be described as middle muted rose. A complement of this color would be **71.3873, -43.6115, 14.8319**, and the grayscale version is **42.3334, -2.2588, 2.3001**.

A 20% lighter version of the original color is **62.5476, 50.5032, 2.9042**, and **26.7027, 47.4328, 4.0483** is the 20% darker color. If you saturate the color by 10%, you get **41.3759, 60.2995, 7.3182**, and if you desaturate by 10%, it is **47.9920, 46.3566, 3.0642**.

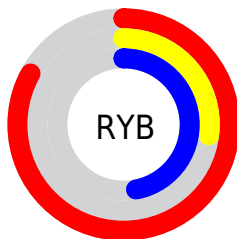
Distribution



Red (83%)

Green (27%)

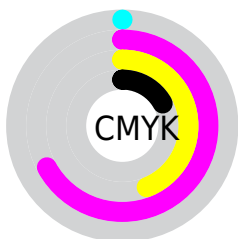
Blue (47%)



Red (83%)

Yellow (27%)

Blue (47%)

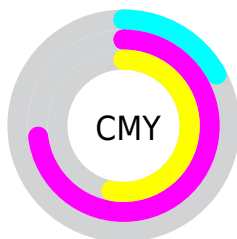


Cyan (0%)

Magenta (67%)

Yellow (44%)

Black (17%)



Cyan (17%)

Magenta (73%)

Yellow (53%)

Brightness & Saturation Gradients

These gradients show how the HunterLab color 44.2552, 54.0806, 4.8346 changes by changing the brightness by 10 percent. The first figure shows a shift by +10% for each color and the second figure -10%.

Similar to the brightness gradients but the following saturation gradients show a change of the HunterLab color 44.2552, 54.0806, 4.8346 by changing the saturation by 10% instead.

44.2552, 54.0806,
4.8346

44.2552, 54.0806,
4.8346

158.0084, 68.6995,
12.3726

34.7774, 51.9833,
4.1209

65.3624, 58.0045,
6.3401

26.0925, 49.8582,
3.4300

76.8998, 59.8164,
7.1299

18.2823, 47.8357,
2.7601

89.0460, 61.5266,
7.9443

11.4587, 46.3198,
2.1048

101.7718, 63.1387,
8.7832

3.8891, 78.1363,
2.7223

115.0521, 64.6574,
9.6459

0.0000, INF, NaN

0.0000, NaN, NaN

128.8644, 66.0873,

10.5320

0.0000, NaN, NaN

143.1891, 67.4332,
11.4410

0.0000, NaN, NaN

■ 44.2552, 54.0806,
4.8346

■ 44.2552, 54.0806,
4.8346

■ 41.3759, 60.2995,
7.3182

■ 47.9920, 46.3566,
3.0642

■ 39.4027, 64.4174,
10.3698

■ 52.4868, 37.7676,
2.0179

■ 38.2875, 66.2033,
13.6957

■ 57.6334, 28.7969,
1.6314

■ 38.0697, 66.4984,
14.5003

■ 63.3302, 19.7570,
1.8066

■ 69.4901, 10.8192,
2.4437

■ 76.0412, 2.0616,
3.4552

■ 82.9257, -6.4925,
4.7691

■ 90.0975, -14.8485,
6.3286

■ 95.9134, -20.6330,
6.2776

Harmonies

Analogous

The Analogous color harmony consists of three colors that are next to each other on the color wheel.



44.2564, 47.1026, -22.3910



44.2552, 54.0806, 4.8346



44.2564, 43.4577, 20.4074

Triad

The Triadic color harmony groups three colors that are evenly spaced from another and form a triangle on the color wheel.



44.2564, 54.0770, 4.8357



44.2564, -25.0193, 25.6955



44.2564, -21.3561, -57.8280

Complementary

The Complementary color scheme is a pair of colors which are on the opposite of each other on the color wheel.



44.2552, 54.0806, 4.8346



71.3873, -43.6115, 14.8319

Split Complementary

Split-complementary colors differ from the complementary color scheme. The scheme consists of three colors, the original color and two neighbors of the complement color.



44.2564, -34.8415, -29.2287



44.2552, 54.0806, 4.8346



44.2564, -36.6168, 18.0160

Square

The Square scheme is like the rectangle color scheme, but the four colors are evenly spaced on the color wheel.



44.2564, 54.0770, 4.8357



44.2564, -4.9601, 27.6927



44.2564, -39.7869, -0.1634



44.2564, 0.2938, -68.1021

Rectangle

The Rectangle color scheme consists of four colors that form a rectangle on the color wheel.



44.2552, 54.0806, 4.8346



44.2564, 28.9280, 25.1776



44.2564, -39.7869, -0.1634



44.2564, -26.8251, -49.4884

Sweetspot

The Sweet Spot groups the original color and five complimentary colors.



44.2564, 54.0770, 4.8357



83.4929, 16.3577, 2.7444



40.8501, 54.8085, -64.2730



37.6239, 9.0137, 1.1605

0.0000, NaN, NaN



46.2646, -2.4686, 2.5136

Same Dimension

The Same Dimension uses a secret algorithm to generate beautiful new colors.



44.2564, 54.0770, 4.8357



49.7826, 76.9066, 10.6073



46.7082, 40.2486, 22.3373



35.3437, 1.7873, 1.5274



29.9408, 52.3546, 10.9739



7.4574, 13.2394, 1.1874

Inverse Universe

The Inverse Universe completely reimagines the original color for something new.



44.2564, 54.0770, 4.8357



49.7826, 76.9066, 10.6073



65.6393, -25.4774, -16.2616



35.3437, 1.7873, 1.5274



29.9408, 52.3546, 10.9739



7.4574, 13.2394, 1.1874

Previews

White Background



This preview shows how the HunterLab color 44.2552, 54.0806, 4.8346 looks on a white background.

Color Contrast Check

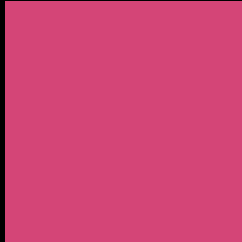
Large Text (above 18pt) WCAG AA ✓ Pass

Any Text WCAG AA × Fail

Large Text (above 18pt) WCAG AAA × Fail

Any Text WCAG AAA × Fail

Black Background



This preview shows how the HunterLab color 44.2552, 54.0806, 4.8346 looks on a black background.

Color Contrast Check

Large Text (above 18pt) WCAG AA ✓ Pass

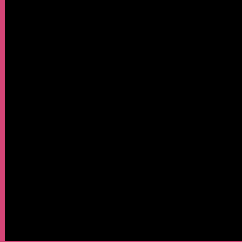
Any Text WCAG AA ✓ Pass

Large Text (above 18pt) WCAG AAA ✓ Pass

Any Text WCAG AAA × Fail

If you want to check with other color combinations, try the [Color Contrast Checker](#).

HunterLab 44.2552, 54.0806, 4.8346 Background



This preview shows how black text looks on a background with the HunterLab color 44.2552, 54.0806, 4.8346.



This preview shows how white text looks on a background with the HunterLab color 44.2552, 54.0806,

Color Blindness Simulation

Color vision deficiency is a very complex topic, and I could not describe the different causes any better than Wikipedia does, so if you want to learn more, you should check out their [article about color blindness](#).

Dichromacy



Original Color

44.2552, 54.0806, 4.8346

Protanopia

44.6128, 1.1521, -10.8366

Deuteranopia

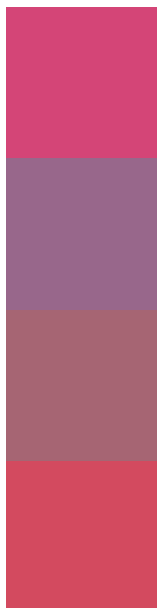
44.5561, 2.8272, 7.1064



Tritanopia

44.2929, 46.4308, 17.4204

Trichromacy



Original Color

44.2552, 54.0806, 4.8346

Protanomaly

42.7083, 19.1297, -7.2581

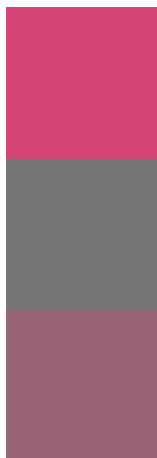
Deuteranomaly

43.1881, 21.4410, 4.7209

Tritanomaly

44.2410, 49.1809, 13.6129

Monochromacy



Original Color

44.2552, 54.0806, 4.8346

Achromatopsia

42.1768, -2.2504, 2.2915

Achromatomaly

41.3494, 17.3261, 1.2066

CSS Examples

Text

The CSS property to change the color of the text to HunterLab 44.2552, 54.0806, 4.8346 is called "color". The color property can be set on classes, ids or directly on the HTML element.

This example shows how text in the color `rgb(212, 69, 119)` looks like.

```
.text, #text, p{  
    color:rgb(212, 69, 119)  
}
```

If you want to add a text shadow in that color use the text-shadow property, you can generate a text shadow directly with our [CSS Text Shadow Generator](#).

Here you see how black text with a 4 pixel rgb(212, 69, 119) colored shadow looks like.

```
.shadow{ text-shadow: 4px 4px 2px rgb(212, 69, 119) }
```

Border

The CSS property to change the border of an element to HunterLab 44.2552, 54.0806, 4.8346 is called "border". The border property can be set on classes, ids or directly on the HTML element.

This example shows the color as border, it can be applied via the CSS property "border" or "border-color".

```
.border, #border, table{ border:4px solid rgb(212, 69, 119) }
```


If only the border color should be changed use the property border-color.

```
.border{ border-color:rgb(212, 69, 119) }
```

If you want to add a box shadow in that color use:

Here you see how a box with a 4 pixel rgb(212, 69, 119) colored shadow looks like.

```
.boxshadow{ -moz-box-shadow:4px 4px 4px  
4px rgb(212, 69, 119); -webkit-box-  
shadow:4px 4px 4px 4px rgb(212, 69, 119);  
box-shadow:4px 4px 4px 4px rgb(212, 69,  
119) }
```

Background

The CSS property to change the background color of an element to HunterLab 44.2552, 54.0806, 4.8346 is called "background". The background property can be set on classes, ids or directly on the HTML element.

```
.background, #background, body{  
background: rgb(212, 69, 119) }
```

If only the background color should be changed can be used:

```
.background{ background-color: rgb(212, 69,  
119) }
```

This example shows the color as background, it is applied via the CSS property "background".

To optimize and compress your CSS code, you can use our [online CSS compressor and optimizer](#) based on csstidy. If you want to create a linear or radial gradient as background or border, check our [CSS Gradient Generator](#).

Hey! You found this booklet interesting? Support Converting Colors with the new Membership Option!

The pro membership hides all ads, plus gives you double the colors in the color bucket, and more awesome pro features!

[Learn more, Memberships starting at \\$2.50/m!](#)

**Follow me
on Twitter!**

@ConvertingColor