

Converting Colors

HunterLab(44.1503, 10.8272,
18.8303)

Have a look what the booklet for
HunterLab(44.1503, 10.8272,
18.8303) contains.

HunterLab(44.1942, 10.6589, 18.9625)	3
<i>Conversions</i>	4
<i>Details</i>	6
<i>Harmonies</i>	12
<i>Previews</i>	24
<i>Color Blindness Simulation</i>	28
<i>CSS Examples</i>	31

Color

**HunterLab(44.1942, 10.6589,
18.9625)**

Conversions

Conversions Part 1

Format	Color
Hex	A26F49
RGB	162, 111, 73
RGB Percent	64%, 44%, 29%
CMY	0.3647, 0.5647, 0.7137
CMYK	0.00, 0.31, 0.55, 0.36
HSL	26°, 38%, 46%
HSV	26°, 55%, 64%
XYZ	21.7873, 19.5313, 8.9249
YIQ	121.9170, 42.5940, -1.0060

Conversions

Conversions Part 2

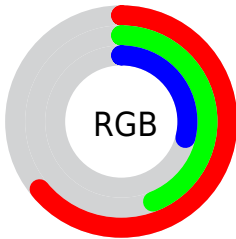
Format	Color
R_{YB}	162, 139, 73
Decimal	10645321
CIE _{Lab}	51.30, 15.90, 29.16
CIE _{LCh}	51, 33.215, 61.399
Yxy	19.5322, 0.4336, 0.3887
Android (android.graphics.Color)	4288835401 (0xFFA26F49)
YUV	121.9170, -24.1161, 35.1528
Hunter-Lab	44.1942, 10.6589, 18.9625

Details

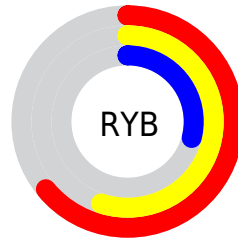
The HunterLab color **44.1942, 10.6589, 18.9625** is a dark color, and the websafe version is hex **996633**. A complement of this color would be **42.9413, -6.6571, -20.8526**, and the grayscale version is **44.1632, -2.3564, 2.3995**.

A 20% lighter version of the original color is **65.3143, 10.9327, 23.7237**, and **26.0089, 9.7352, 13.6926** is the 20% darker color. If you saturate the color by 10%, you get **41.7408, 14.0118, 20.5043**, and if you desaturate by 10%, it is **46.8060, 7.5678, 16.9460**.

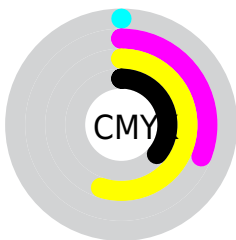
Distribution



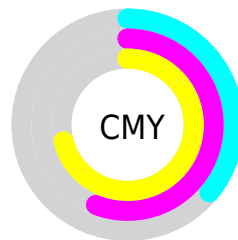
- Red (64%)
- Green (44%)
- Blue (29%)



- Red (64%)
- Yellow (55%)
- Blue (29%)



- Cyan (0%)
- Magenta (31%)
- Yellow (55%)
- Black (36%)



- Cyan (36%)
- Magenta (56%)
- Yellow (71%)

Brightness & Saturation Gradients

These gradients show how the HunterLab color 44.1942, 10.6589, 18.9625 changes by changing the brightness by 10 percent. The first figure shows a shift by +10% for each color and the second figure -10%.

Similar to the brightness gradients but the following saturation gradients show a change of the HunterLab color 44.1942, 10.6589, 18.9625 by changing the saturation by 10% instead.

■ 44.1942, 10.6589,
18.9625

■ 44.1942, 10.6589,
18.9625

157.9150, 10.8598,
38.0713

■ 34.7210, 10.2700,
16.4560

■ 65.2928, 11.1563,
23.6129

■ 26.0413, 9.7723,
13.7713

■ 76.8264, 11.2901,
25.8102

■ 18.2368, 9.1424,
11.0453

■ 88.9688, 11.3569,
27.9468

■ 11.4197, 8.3516,
7.9938

■ 101.6912, 11.3626,
30.0351

■ 3.7997, 18.0316,
2.6598

■ 114.9680, 11.3119,
32.0848

0.0000, NaN, NaN

0.0000, NaN, NaN

128.7771, 11.2090,

34.1036

0.0000, NaN, NaN

143.0987, 11.0573,
36.0975

0.0000, NaN, NaN

■ 44.1942, 10.6589,
18.9625

■ 44.1942, 10.6589,
18.9625

■ 41.7408, 14.0118,
20.5043

■ 46.8060, 7.5678,
16.9460

■ 39.4580, 17.6193,
21.5247

■ 49.5585, 4.7446,
14.5023

■ 37.3625, 21.4451,
21.9917

■ 52.4394, 2.1779,
11.6796

■ 35.4685, 25.4253,
21.9070

■ 55.4369, -0.1470,
8.5221

■ 34.5821, 27.4311,
21.7896

■ 58.5402, -2.2474,
5.0691

■ 61.7401, -4.1415,
1.3548

■ 65.0284, -5.8475,
-2.5912

■ 68.3977, -7.3825,
-6.7434

■ 71.8418, -8.7625,
-11.0802

Harmonies

Analogous

The Analogous color harmony consists of three colors that are next to each other on the color wheel.



44.1953, 21.8413, 13.3610



44.1942, 10.6589, 18.9625



44.1953, -2.9875, 20.5582

Triad

The Triadic color harmony groups three colors that are evenly spaced from another and form a triangle on the color wheel.



44.1953, 10.6567, 18.9631



44.1953, -25.2731, 1.8034



44.1953, 11.8739, -24.0319

Complementary

The Complementary color scheme is a pair of colors which are on the opposite of each other on the color wheel.



44.1942, 10.6589, 18.9625



42.9413, -6.6571, -20.8526

Split Complementary

Split-complementary colors differ from the complementary color scheme. The scheme consists of three colors, the original color and two neighbors of the complement color.



44.1953, -1.7300, -29.7641



44.1942, 10.6589, 18.9625



44.1953, -22.2655, -12.3567

Square

The Square scheme is like the rectangle color scheme, but the four colors are evenly spaced on the color wheel.



44.1953, 10.6567, 18.9631



44.1953, -22.7757, 12.6004



44.1953, -14.0262, -24.9631



44.1953, 22.6008, -11.0032

Rectangle

The Rectangle color scheme consists of four colors that form a rectangle on the color wheel.



44.1942, 10.6589, 18.9625



44.1953, -11.3703, 19.6775



44.1953, -14.0262, -24.9631



44.1953, 7.4344, -27.0246

Sweetspot

The Sweet Spot groups the original color and five complimentary colors.



44.1953, 10.6567, 18.9631



74.1339, 0.2119, 12.0889



37.3164, 35.0488, -7.1749



34.7563, 0.3821, 6.1326



90.9709, -4.8540, 4.9426



38.3822, -2.0480, 2.0854

Same Dimension

The Same Dimension uses a secret algorithm to generate beautiful new colors.



44.1953, 10.6567, 18.9631



55.5061, 19.9776, 28.0107



56.0951, -9.8474, 27.7306



27.4955, -0.6555, 3.1734



30.8286, 24.0137, 19.4168



5.4094, 1.4027, 3.3578

Inverse Universe

The Inverse Universe completely reimagines the original color for something new.



42.9413, -6.6571, -20.8526



53.4499, -7.5848, -36.0337



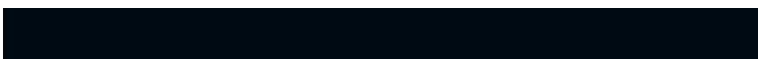
31.3429, 14.4509, -45.0947



27.3899, -2.1730, -0.2680



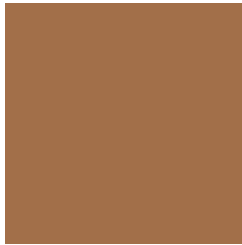
28.7840, 0.8071, -37.7198



5.1499, -1.4225, -3.3662

Previews

White Background



This preview shows how the HunterLab color 44.1942, 10.6589, 18.9625 looks on a white background.

Color Contrast Check

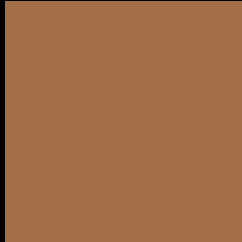
Large Text (above 18pt) WCAG AA ✓ Pass

Any Text WCAG AA × Fail

Large Text (above 18pt) WCAG AAA × Fail

Any Text WCAG AAA × Fail

Black Background



This preview shows how the HunterLab color 44.1942, 10.6589, 18.9625 looks on a black background.

Color Contrast Check

Large Text (above 18pt) WCAG AA ✓ Pass

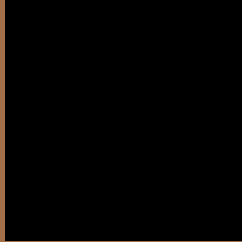
Any Text WCAG AA ✓ Pass

Large Text (above 18pt) WCAG AAA ✓ Pass

Any Text WCAG AAA × Fail

If you want to check with other color combinations, try the [Color Contrast Checker](#).

HunterLab 44.1942, 10.6589, 18.9625 Background



This preview shows how black text looks on a background with the HunterLab color 44.1942, 10.6589, 18.9625.



This preview shows how white text looks on a background with the HunterLab color 44.1942, 10.6589,

Color Blindness Simulation

Color vision deficiency is a very complex topic, and I could not describe the different causes any better than Wikipedia does, so if you want to learn more, you should check out their [article about color blindness](#).

Dichromacy



Original Color

44.1942, 10.6589, 18.9625

Protanopia

44.4635, -4.5300, 17.9565

Deuteranopia

44.2493, 2.9420, 19.1029



Tritanopia

44.1841, 18.4577, 6.1869

Trichromacy



Original Color

44.1942, 10.6589, 18.9625

Protanomaly

44.3224, 0.5774, 18.1749

Deuteranomaly

44.2712, 5.6923, 19.1686

Tritanomaly

44.1797, 15.3078, 11.6496

Monochromacy



Original Color

44.1942, 10.6589, 18.9625

Achromatopsia

44.1155, -2.3539, 2.3969

Achromatomaly

43.9030, 1.6136, 9.3942

CSS Examples

Text

The CSS property to change the color of the text to HunterLab 44.1942, 10.6589, 18.9625 is called "color". The color property can be set on classes, ids or directly on the HTML element.

This example shows how text in the color `rgb(162, 111, 73)` looks like.

```
.text, #text, p{  
    color:rgb(162, 111, 73)  
}
```

If you want to add a text shadow in that color use the text-shadow property, you can generate a text shadow directly with our [CSS Text Shadow Generator](#).

Here you see how black text with a 4 pixel rgb(162, 111, 73) colored shadow looks like.

```
.shadow{ text-shadow: 4px 4px 2px rgb(162, 111, 73) }
```

Border

The CSS property to change the border of an element to HunterLab 44.1942, 10.6589, 18.9625 is called "border". The border property can be set on classes, ids or directly on the HTML element.

This example shows the color as border, it can be applied via the CSS property "border" or "border-color".

```
.border, #border, table{ border:4px solid rgb(162, 111, 73) }
```


If only the border color should be changed use the property border-color.

```
.border{ border-color:rgb(162, 111, 73) }
```

If you want to add a box shadow in that color use:

Here you see how a box with a 4 pixel rgb(162, 111, 73) colored shadow looks like.

```
.boxshadow{ -moz-box-shadow:4px 4px 4px  
4px rgb(162, 111, 73); -webkit-box-  
shadow:4px 4px 4px 4px rgb(162, 111, 73);  
box-shadow:4px 4px 4px 4px rgb(162, 111,  
73) }
```

Background

The CSS property to change the background color of an element to HunterLab 44.1942, 10.6589, 18.9625 is called "background". The background property can be set on classes, ids or directly on the HTML element.

```
.background, #background, body{  
background: rgb(162, 111, 73) }
```

If only the background color should be changed can be used:

```
.background{ background-color: rgb(162,  
111, 73) }
```

This example shows the color as background, it is applied via the CSS property "background".

To optimize and compress your CSS code, you can use our [online CSS compressor and optimizer](#) based on csstidy. If you want to create a linear or radial gradient as background or border, check our [CSS Gradient Generator](#).

Hey! You found this booklet interesting? Support Converting Colors with the new Membership Option!

The pro membership hides all ads, plus gives you double the colors in the color bucket, and more awesome pro features!

[Learn more, Memberships starting at \\$2.50/m!](#)

**Follow me
on Twitter!**

@ConvertingColor