

Converting Colors

HunterLab(44.1675, 5.8077,
18.0157)

Have a look what the booklet for
HunterLab(44.1675, 5.8077,
18.0157) contains.

HunterLab(44.2375, 5.7349, 17.9491)	3
<i>Conversions</i>	4
<i>Details</i>	6
<i>Harmonies</i>	12
<i>Previews</i>	24
<i>Color Blindness Simulation</i>	28
<i>CSS Examples</i>	31

Color

**HunterLab(44.2375, 5.7349,
17.9491)**

Conversions

Conversions Part 1

Format	Color
Hex	99734D
RGB	153, 115, 77
RGB Percent	60%, 45%, 30%
CMY	0.4000, 0.5490, 0.6980
CMYK	0.00, 0.25, 0.50, 0.40
HSL	30°, 33%, 45%
HSV	30°, 50%, 60%
XYZ	20.6071, 19.5696, 9.7124
YIQ	122.0300, 34.8460, -3.7620

Conversions

Conversions Part 2

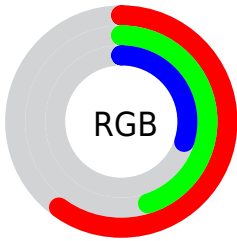
Format	Color
RYB	153, 153, 77
Decimal	10056525
CIELab	51.35, 10.08, 26.75
CIELCh	51, 28.592, 69.350
Yxy	19.5705, 0.4131, 0.3923
Android (android.graphics.Color)	4288246605 (0xFF99734D)
YUV	122.0300, -22.1998, 27.1607
Hunter-Lab	44.2375, 5.7349, 17.9491

Details

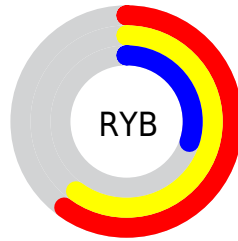
The HunterLab color **44.2375, 5.7349, 17.9491** is a dark color, and the websafe version is hex **996633**. A complement of this color would be **40.1727, -3.9157, -19.7926**, and the grayscale version is **44.2021, -2.3585, 2.4016**.

A 20% lighter version of the original color is **65.3644, 5.6165, 22.1628**, and **26.1200, 5.6121, 13.2508** is the 20% darker color. If you saturate the color by 10%, you get **42.0789, 8.2030, 19.7113**, and if you desaturate by 10%, it is **46.5084, 3.5141, 15.7237**.

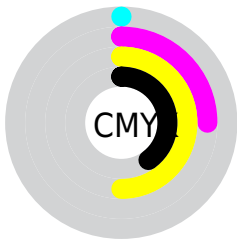
Distribution



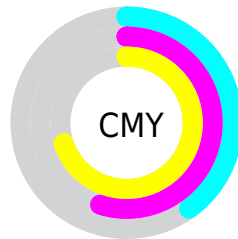
- Red (60%)
- Green (45%)
- Blue (30%)



- Red (60%)
- Yellow (60%)
- Blue (30%)



- Cyan (0%)
- Magenta (25%)
- Yellow (50%)
- Black (40%)



- Cyan (40%)
- Magenta (55%)
- Yellow (70%)

Brightness & Saturation Gradients

These gradients show how the HunterLab color 44.2375, 5.7349, 17.9491 changes by changing the brightness by 10 percent. The first figure shows a shift by +10% for each color and the second figure -10%.

Similar to the brightness gradients but the following saturation gradients show a change of the HunterLab color 44.2375, 5.7349, 17.9491 by changing the saturation by 10% instead.

■ 44.2375, 5.7349,
17.9491

■ 44.2375, 5.7349,
17.9491

157.9812, 3.6951,
35.8953

■ 34.7609, 5.6588,
15.6239

■ 65.3421, 5.6576,
22.2809

■ 26.0776, 5.4942,
13.1395

■ 76.8784, 5.5245,
24.3361

■ 18.2690, 5.2208,
10.5074

■ 89.0235, 5.3360,
26.3395

■ 11.4473, 4.8109,
8.0131

■ 101.7483, 5.0964,
28.3024

■ 3.8632, 11.1670,
2.7042

■ 115.0275, 4.8096,
30.2333

0.0000, NaN, NaN

0.0000, NaN, NaN

128.8389, 4.4788,

32.1390

0.0000, NaN, NaN

143.1627, 4.1065,
34.0249

0.0000, NaN, NaN

■ 44.2375, 5.7349,
17.9491

■ 44.2375, 5.7349,
17.9491

■ 42.0789, 8.2030,
19.7113

■ 46.5084, 3.5141,
15.7237

■ 40.0383, 10.9250,
20.9734

■ 48.8798, 1.5390,
13.0723

■ 38.1258, 13.8898,
21.7093

■ 51.3449, -0.2042,
10.0338

■ 36.3499, 17.0734,
21.9106

■ 53.8963, -1.7294,
6.6452

■ 34.7092, 20.3932,
21.7201

■ 56.5272, -3.0518,
2.9404

■ 34.6573, 20.5014,
21.7146

■ 59.2318, -4.1865,
-1.0500

■ 62.0045, -5.1485,
-5.2985

■ 64.8405, -5.9519,
-9.7808

■ 67.7354, -6.6098,
-14.4755

Harmonies

Analogous

The Analogous color harmony consists of three colors that are next to each other on the color wheel.



44.2386, 16.1256, 13.8044



44.2375, 5.7349, 17.9491



44.2386, -5.9083, 18.5761

Triad

The Triadic color harmony groups three colors that are evenly spaced from another and form a triangle on the color wheel.



44.2386, 5.7330, 17.9496



44.2386, -22.1873, -1.1581



44.2386, 12.5947, -17.2088

Complementary

The Complementary color scheme is a pair of colors which are on the opposite of each other on the color wheel.



44.2375, 5.7349, 17.9491



40.1727, -3.9157, -19.7926

Split Complementary

Split-complementary colors differ from the complementary color scheme. The scheme consists of three colors, the original color and two neighbors of the complement color.



44.2386, 1.2979, -23.8749



44.2375, 5.7349, 17.9491



44.2386, -18.2390, -13.1650

Square

The Square scheme is like the rectangle color scheme, but the four colors are evenly spaced on the color wheel.



44.2386, 5.7330, 17.9496



44.2386, -21.2609, 9.2206



44.2386, -9.9153, -22.2305



44.2386, 20.3604, -5.6966

Rectangle

The Rectangle color scheme consists of four colors that form a rectangle on the color wheel.



44.2375, 5.7349, 17.9491



44.2386, -12.7162, 17.1321



44.2386, -9.9153, -22.2305



44.2386, 9.0400, -20.2093

Sweetspot

The Sweet Spot groups the original color and five complimentary colors.



44.2386, 5.7330, 17.9496



70.1924, -1.2011, 11.4982



36.4939, 28.5082, -3.3652



32.6764, -0.3758, 5.8070



87.6224, -4.6753, 4.7607



35.4919, -1.8938, 1.9283

Same Dimension

The Same Dimension uses a secret algorithm to generate beautiful new colors.



44.2386, 5.7330, 17.9496



55.8880, 11.5074, 26.6781



54.8548, -11.8215, 26.0052



25.8987, -0.8596, 3.1101



31.6133, 18.3945, 19.8020



4.7126, 0.5224, 2.9130

Inverse Universe

The Inverse Universe completely reimagines the original color for something new.



40.1727, -3.9157, -19.7926



49.3310, -3.7081, -34.5352



30.3078, 14.4814, -40.0264



25.5166, -1.7943, -0.4083



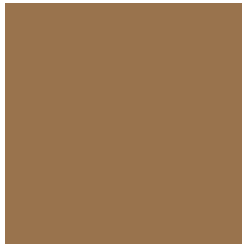
25.0918, 5.5285, -43.2969



4.0840, -1.0180, -2.9071

Previews

White Background



This preview shows how the HunterLab color 44.2375, 5.7349, 17.9491 looks on a white background.

Color Contrast Check

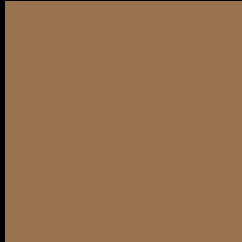
Large Text (above 18pt) WCAG AA ✓ Pass

Any Text WCAG AA × Fail

Large Text (above 18pt) WCAG AAA × Fail

Any Text WCAG AAA × Fail

Black Background



This preview shows how the HunterLab color 44.2375, 5.7349, 17.9491 looks on a black background.

Color Contrast Check

Large Text (above 18pt) WCAG AA ✓ Pass

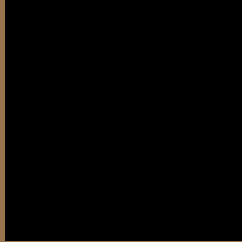
Any Text WCAG AA ✓ Pass

Large Text (above 18pt) WCAG AAA ✓ Pass

Any Text WCAG AAA × Fail

If you want to check with other color combinations, try the [Color Contrast Checker](#).

HunterLab 44.2375, 5.7349, 17.9491 Background



This preview shows how black text looks on a background with the HunterLab color 44.2375, 5.7349, 17.9491.



This preview shows how white text looks on a background with the HunterLab color 44.2375, 5.7349,

17.9491.

Color Blindness Simulation

Color vision deficiency is a very complex topic, and I could not describe the different causes any better than Wikipedia does, so if you want to learn more, you should check out their [article about color blindness](#).

Dichromacy



Original Color

44.2375, 5.7349, 17.9491

Protanopia

44.4203, -4.5849, 17.1614

Deuteranopia

44.2202, 2.9980, 17.8869



Tritanopia

44.3035, 14.1317, 4.6096

Trichromacy



Original Color

44.2375, 5.7349, 17.9491

Protanomaly

44.2413, -0.9931, 17.3306

Deuteranomaly

44.1708, 4.1807, 17.8666

Tritanomaly

44.3120, 10.8849, 10.3261

Monochromacy



Original Color

44.2375, 5.7349, 17.9491

Achromatopsia

44.1155, -2.3539, 2.3969

Achromatomaly

43.8415, 0.1111, 8.5764

CSS Examples

Text

The CSS property to change the color of the text to HunterLab 44.2375, 5.7349, 17.9491 is called "color". The color property can be set on classes, ids or directly on the HTML element.

This example shows how text in the color `rgb(153, 115, 77)` looks like.

```
.text, #text, p{  
    color:rgb(153, 115, 77)  
}
```

If you want to add a text shadow in that color use the text-shadow property, you can generate a text shadow directly with our [CSS Text Shadow Generator](#).

Here you see how black text with a 4 pixel rgb(153, 115, 77) colored shadow looks like.

```
.shadow{ text-shadow: 4px 4px 2px rgb(153, 115, 77) }
```

Border

The CSS property to change the border of an element to HunterLab 44.2375, 5.7349, 17.9491 is called "border". The border property can be set on classes, ids or directly on the HTML element.

This example shows the color as border, it can be applied via the CSS property "border" or "border-color".

```
.border, #border, table{ border:4px solid rgb(153, 115, 77) }
```


If only the border color should be changed use the property `border-color`.

```
.border{ border-color:rgb(153, 115, 77) }
```

If you want to add a box shadow in that color use:

Here you see how a box with a 4 pixel `rgb(153, 115, 77)` colored shadow looks like.

```
.boxshadow{ -moz-box-shadow:4px 4px 4px  
4px rgb(153, 115, 77); -webkit-box-  
shadow:4px 4px 4px 4px rgb(153, 115, 77);  
box-shadow:4px 4px 4px 4px rgb(153, 115,  
77) }
```

Background

The CSS property to change the background color of an element to HunterLab 44.2375, 5.7349, 17.9491 is called "background". The background property can be set on classes, ids or directly on the HTML element.

```
.background, #background, body{  
background: rgb(153, 115, 77) }
```

If only the background color should be changed can be used:

```
.background{ background-color: rgb(153,  
115, 77) }
```

This example shows the color as background, it is applied via the CSS property "background".

To optimize and compress your CSS code, you can use our [online CSS compressor and optimizer](#) based on csstidy. If you want to create a linear or radial gradient as background or border, check our [CSS Gradient Generator](#).

Hey! You found this booklet interesting? Support Converting Colors with the new Membership Option!

The pro membership hides all ads, plus gives you double the colors in the color bucket, and more awesome pro features!

[Learn more, Memberships starting at \\$2.50/m!](#)

**Follow me
on Twitter!**

@ConvertingColor