

Converting Colors

HunterLab(44.2807, 57.6137,
11.4744)

Have a look what the booklet for
HunterLab(44.2807, 57.6137,
11.4744) contains.

HunterLab(44.2430, 57.2849, 11.4196)	3
<i>Conversions</i>	4
<i>Details</i>	6
<i>Harmonies</i>	12
<i>Previews</i>	24
<i>Color Blindness Simulation</i>	28
<i>CSS Examples</i>	31

Color

**HunterLab(44.2430, 57.2849,
11.4196)**

Conversions

Conversions Part 1

Format	Color
Hex	DB3F66
RGB	219, 63, 102
RGB Percent	86%, 25%, 40%
CMY	0.1412, 0.7529, 0.6000
CMYK	0.00, 0.71, 0.53, 0.14
HSL	345°, 68%, 55%
HSV	345°, 71%, 86%
XYZ	33.3893, 19.5744, 14.5888
YIQ	114.0900, 80.4570, 45.2010

Conversions

Conversions Part 2

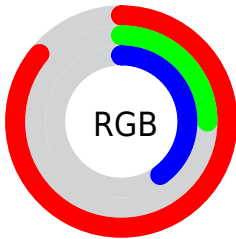
Format	Color
R_{YB}	219, 63, 102
Decimal	14368614
CIE _{Lab}	51.35, 62.48, 13.79
CIE _{LCh}	51, 63.984, 12.442
Yxy	19.5755, 0.4943, 0.2898
Android (android.graphics.Color)	4292558694 (0xFFDB3F66)
YUV	114.0900, -5.9604, 92.0061
Hunter-Lab	44.2430, 57.2849, 11.4196

Details

The HunterLab color **44.2430, 57.2849, 11.4196** is a dark color, and the websafe version is hex **CC3366**. The color can be described as dark muted rose. A complement of this color would be **74.1726, -44.0777, 10.4129**, and the grayscale version is **41.0577, -2.1907, 2.2307**.

A 20% lighter version of the original color is **61.0202, 50.6731, 9.2050**, and **27.4857, 48.1088, 9.7082** is the 20% darker color. If you saturate the color by 10%, you get **41.6156, 63.0249, 14.3311**, and if you desaturate by 10%, it is **47.8133, 49.7919, 8.9153**.

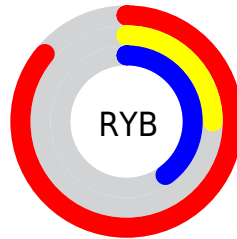
Distribution



Red (86%)

Green (25%)

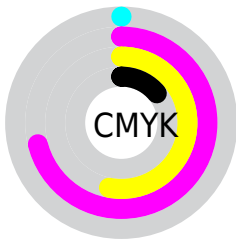
Blue (40%)



Red (86%)

Yellow (25%)

Blue (40%)

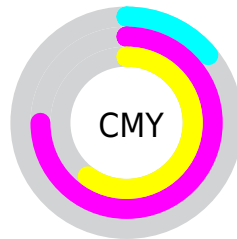


Cyan (0%)

Magenta (71%)

Yellow (53%)

Black (14%)



Cyan (14%)

Magenta (75%)

Yellow (60%)

Brightness & Saturation Gradients

These gradients show how the HunterLab color 44.2430, 57.2849, 11.4196 changes by changing the brightness by 10 percent. The first figure shows a shift by +10% for each color and the second figure -10%.

Similar to the brightness gradients but the following saturation gradients show a change of the HunterLab color 44.2430, 57.2849, 11.4196 by changing the saturation by 10% instead.

■ 44.2430, 57.2849,
11.4196

■ 44.2430, 57.2849,
11.4196

157.9899, 72.6730,
23.3708

■ 34.7662, 55.1216,
10.0312

■ 65.3486, 61.3690,
14.1134

■ 26.0823, 52.9533,
8.5898

■ 76.8852, 63.2672,
15.4375

■ 18.2733, 50.9344,
7.0641

■ 89.0307, 65.0653,
16.7555

■ 11.4509, 49.5326,
5.9197

■ 101.7558, 66.7656,
18.0717

■ 3.8715, 83.9309,
2.7100

■ 115.0353, 68.3721,
19.3892

0.0000, INF, NaN

0.0000, NaN, NaN

128.8470, 69.8892,

20.7103

0.0000, NaN, NaN

143.1711, 71.3214,
22.0371

0.0000, NaN, NaN

■ 44.2430, 57.2849,
11.4196

■ 44.2430, 57.2849,
11.4196

■ 41.6156, 63.0249,
14.3311

■ 47.8133, 49.7919,
8.9153

■ 39.9555, 66.4632,
17.3933

■ 52.2313, 41.2421,
6.9490

■ 39.1579, 67.7571,
19.8918

■ 57.3828, 32.2016,
5.5487

■ 63.1540, 23.0511,
4.6748

■ 69.4449, 14.0042,
4.2592

■ 76.1727, 5.1602,
4.2291

■ 83.2706, -3.4497,
4.5182

■ 90.6853, -11.8301,
5.0705

■ 96.6808, -17.4220,
3.8883

Harmonies

Analogous

The Analogous color harmony consists of three colors that are next to each other on the color wheel.



44.2443, 55.5947, -14.3327



44.2430, 57.2849, 11.4196



44.2443, 40.5422, 23.8909

Triad

The Triadic color harmony groups three colors that are evenly spaced from another and form a triangle on the color wheel.



44.2443, 57.2808, 11.4206



44.2443, -31.1217, 25.0029



44.2443, -16.3619, -70.3909

Complementary

The Complementary color scheme is a pair of colors which are on the opposite of each other on the color wheel.



44.2430, 57.2849, 11.4196



74.1726, -44.0777, 10.4129

Split Complementary

Split-complementary colors differ from the complementary color scheme. The scheme consists of three colors, the original color and two neighbors of the complement color.



44.2443, -33.3548, -42.7678



44.2430, 57.2849, 11.4196



44.2443, -40.4354, 14.4147

Square

The Square scheme is like the rectangle color scheme, but the four colors are evenly spaced on the color wheel.



44.2443, 57.2808, 11.4206



44.2443, -12.5565, 28.1551



44.2443, -41.1461, -9.0190



44.2443, 8.8457, -72.9497

Rectangle

The Rectangle color scheme consists of four colors that form a rectangle on the color wheel.



44.2430, 57.2849, 11.4196



44.2443, 23.0191, 27.1479



44.2443, -41.1461, -9.0190



44.2443, -23.0629, -63.2218

Sweetspot

The Sweet Spot groups the original color and five complimentary colors.



44.2443, 57.2808, 11.4206



82.5477, 16.5879, 5.0593



42.8652, 64.0175, -65.1630



37.2011, 9.0494, 2.3810

0.0000, NaN, NaN



46.2646, -2.4686, 2.5136

Same Dimension

The Same Dimension uses a secret algorithm to generate beautiful new colors.



44.2443, 57.2808, 11.4206



48.4174, 77.0843, 18.6649



49.9233, 37.2864, 25.8284



36.2003, 1.6823, 1.9915



30.1776, 52.2663, 14.9551



7.7704, 13.6323, 2.5000

Inverse Universe

The Inverse Universe completely reimagines the original color for something new.



44.2443, 57.2808, 11.4206



48.4174, 77.0843, 18.6649



62.3018, -19.7563, -25.7337



36.2003, 1.6823, 1.9915



30.1776, 52.2663, 14.9551



7.7704, 13.6323, 2.5000

Previews

White Background



This preview shows how the HunterLab color 44.2430, 57.2849, 11.4196 looks on a white background.

Color Contrast Check

Large Text (above 18pt) WCAG AA ✓ Pass

Any Text WCAG AA × Fail

Large Text (above 18pt) WCAG AAA × Fail

Any Text WCAG AAA × Fail

Black Background



This preview shows how the HunterLab color 44.2430, 57.2849, 11.4196 looks on a black background.

Color Contrast Check

Large Text (above 18pt) WCAG AA ✓ Pass

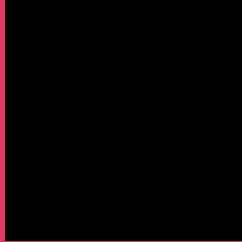
Any Text WCAG AA ✓ Pass

Large Text (above 18pt) WCAG AAA ✓ Pass

Any Text WCAG AAA × Fail

If you want to check with other color combinations, try the [Color Contrast Checker](#).

HunterLab 44.2430, 57.2849, 11.4196 Background



This preview shows how black text looks on a background with the HunterLab color 44.2430, 57.2849, 11.4196.



This preview shows how white text looks on a background with the HunterLab color 44.2430, 57.2849,

Color Blindness Simulation

Color vision deficiency is a very complex topic, and I could not describe the different causes any better than Wikipedia does, so if you want to learn more, you should check out their [article about color blindness](#).

Dichromacy



Original Color

44.2430, 57.2849, 11.4196

Protanopia

44.4101, -0.7453, -1.7917

Deuteranopia

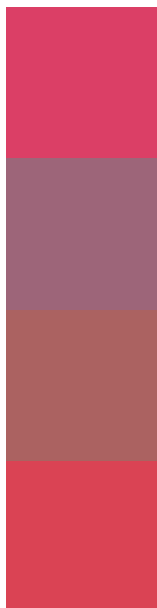
44.3783, 2.7845, 13.2465



Tritanopia

44.1463, 51.9134, 19.6460

Trichromacy



Original Color

44.2430, 57.2849, 11.4196

Protanomaly

42.2563, 19.0245, 0.9902

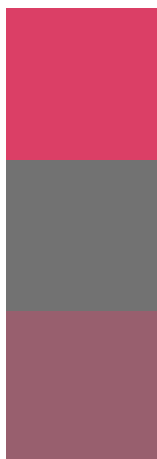
Deuteranomaly

42.7275, 22.6493, 11.0319

Tritanomaly

44.2265, 53.8591, 16.9508

Monochromacy



Original Color

44.2430, 57.2849, 11.4196

Achromatopsia

41.0207, -2.1888, 2.2287

Achromatomaly

39.9820, 18.6769, 3.0879

CSS Examples

Text

The CSS property to change the color of the text to HunterLab 44.2430, 57.2849, 11.4196 is called "color". The color property can be set on classes, ids or directly on the HTML element.

This example shows how text in the color `rgb(219, 63, 102)` looks like.

```
.text, #text, p{  
  color:rgb(219, 63, 102)  
}
```

If you want to add a text shadow in that color use the text-shadow property, you can generate a text shadow directly with our [CSS Text Shadow Generator](#).

Here you see how black text with a 4 pixel rgb(219, 63, 102) colored shadow looks like.

```
.shadow{ text-shadow: 4px 4px 2px rgb(219, 63, 102) }
```

Border

The CSS property to change the border of an element to HunterLab 44.2430, 57.2849, 11.4196 is called "border". The border property can be set on classes, ids or directly on the HTML element.

This example shows the color as border, it can be applied via the CSS property "border" or "border-color".

```
.border, #border, table{ border:4px solid rgb(219, 63, 102) }
```


If only the border color should be changed use the property border-color.

```
.border{ border-color:rgb(219, 63, 102) }
```

If you want to add a box shadow in that color use:

Here you see how a box with a 4 pixel rgb(219, 63, 102) colored shadow looks like.

```
.boxshadow{ -moz-box-shadow:4px 4px 4px  
4px rgb(219, 63, 102); -webkit-box-  
shadow:4px 4px 4px 4px rgb(219, 63, 102);  
box-shadow:4px 4px 4px 4px rgb(219, 63,  
102) }
```

Background

The CSS property to change the background color of an element to HunterLab 44.2430, 57.2849, 11.4196 is called "background". The background property can be set on classes, ids or directly on the HTML element.

```
.background, #background, body{  
background: rgb(219, 63, 102) }
```

If only the background color should be changed can be used:

```
.background{ background-color: rgb(219, 63,  
102) }
```

This example shows the color as background, it is applied via the CSS property "background".

To optimize and compress your CSS code, you can use our [online CSS compressor and optimizer](#) based on csstidy. If you want to create a linear or radial gradient as background or border, check our [CSS Gradient Generator](#).

Hey! You found this booklet interesting? Support Converting Colors with the new Membership Option!

The pro membership hides all ads, plus gives you double the colors in the color bucket, and more awesome pro features!

[Learn more, Memberships starting at \\$2.50/m!](#)

**Follow me
on Twitter!**

@ConvertingColor