

Converting Colors

HunterLab(44.3349, 51.9119,
-3.1941)

Have a look what the booklet for
HunterLab(44.3349, 51.9119,
-3.1941) contains.

HunterLab(44.3653, 51.6770, -3.3861)	3
<i>Conversions</i>	4
<i>Details</i>	6
<i>Harmonies</i>	12
<i>Previews</i>	24
<i>Color Blindness Simulation</i>	28
<i>CSS Examples</i>	31

Color

**HunterLab(44.3653, 51.6770,
-3.3861)**

Conversions

Conversions Part 1

Format	Color
Hex	CD4A89
RGB	205, 74, 137
RGB Percent	80%, 29%, 54%
CMY	0.1961, 0.7098, 0.4627
CMYK	0.00, 0.64, 0.33, 0.20
HSL	331°, 57%, 55%
HSV	331°, 64%, 80%
XYZ	32.1409, 19.6828, 25.7720
YIQ	120.3510, 57.8530, 47.3650

Conversions

Conversions Part 2

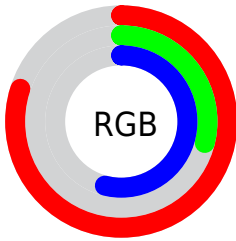
Format	Color
R_{YB}	205, 74, 137
Decimal	13453961
CIE _{Lab}	51.48, 57.49, -7.38
CIE _{LCh}	51, 57.966, 352.690
Yxy	19.6838, 0.4142, 0.2537
Android (android.graphics.Color)	4291644041 (0xFFCD4A89)
YUV	120.3510, 8.2080, 74.2372
Hunter-Lab	44.3653, 51.6770, -3.3861

Details

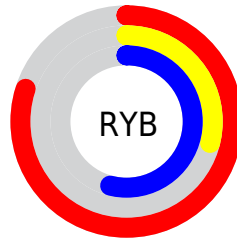
The HunterLab color **44.3653, 51.6770, -3.3861** is a dark color, and the websafe version is hex **CC6699**. The color can be described as middle muted rose. A complement of this color would be **68.6090, -43.2144, 19.4024**, and the grayscale version is **43.4293, -2.3173, 2.3596**.

A 20% lighter version of the original color is **63.9867, 51.2645, -4.8137**, and **26.2510, 47.5769, -3.3565** is the 20% darker color. If you saturate the color by 10%, you get **41.3370, 58.3378, -1.9926**, and if you desaturate by 10%, it is **48.1683, 43.7089, -3.8570**.

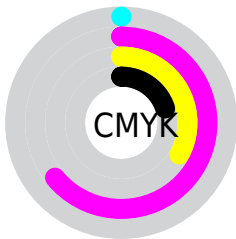
Distribution



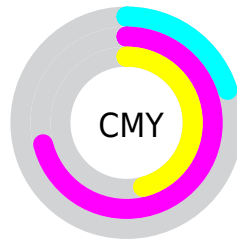
- Red (80%)
- Green (29%)
- Blue (54%)



- Red (80%)
- Yellow (29%)
- Blue (54%)



- Cyan (0%)
- Magenta (64%)
- Yellow (33%)
- Black (20%)



- Cyan (20%)
- Magenta (71%)
- Yellow (46%)

Brightness & Saturation Gradients

These gradients show how the HunterLab color 44.3653, 51.6770, -3.3861 changes by changing the brightness by 10 percent. The first figure shows a shift by +10% for each color and the second figure -10%.

Similar to the brightness gradients but the following saturation gradients show a change of the HunterLab color 44.3653, 51.6770, -3.3861 by changing the saturation by 10% instead.

■ 44.3653, 51.6770,
-3.3861

■ 44.3653, 51.6770,
-3.3861

158.1766, 65.6831,
0.0603

■ 34.8790, 49.6354,
-3.5123

■ 65.4878, 55.4707,
-2.9457

■ 26.1848, 47.5492,
-3.5679

■ 77.0321, 57.2132,
-2.6455

■ 18.3643, 45.5308,
-3.5410

■ 89.1849, 58.8534,
-2.2974

■ 11.5289, 43.9345,
-3.4177

■ 101.9171, 60.3956,
-1.9047

■ 4.0448, 71.5639,
-7.3383

■ 115.2033, 61.8447,
-1.4703

0.0000, INF, NaN

0.0000, NaN, NaN

129.0215, 63.2058,

-0.9966

0.0000, NaN, NaN

143.3518, 64.4838,
-0.4858

0.0000, NaN, NaN

■ 44.3653, 51.6770,
-3.3861

■ 44.3653, 51.6770,
-3.3861

■ 41.3370, 58.3378,
-1.9926

■ 48.1683, 43.7089,
-3.8570

■ 39.1429, 63.0935,
0.3273

■ 52.6504, 35.0125,
-3.5155

■ 37.7836, 65.5356,
3.4260

■ 57.7155, 26.0057,
-2.5032

■ 37.2452, 66.1807,
5.4839

■ 63.2742, 16.9533,
-0.9589

■ 69.2503, 7.9991,
1.0005

■ 75.5811, -0.7913,
3.2832

■ 82.2160, -9.3985,
5.8197

■ 89.1143, -17.8274,
8.5581

■ 95.0629, -24.3815,
10.1740

Harmonies

Analogous

The Analogous color harmony consists of three colors that are next to each other on the color wheel.



44.3665, 39.3988, -32.1594



44.3653, 51.6770, -3.3861



44.3665, 47.2537, 15.9585

Triad

The Triadic color harmony groups three colors that are evenly spaced from another and form a triangle on the color wheel.



44.3665, 51.6739, -3.3849



44.3665, -18.4293, 26.5385



44.3665, -26.4853, -46.9116

Complementary

The Complementary color scheme is a pair of colors which are on the opposite of each other on the color wheel.



44.3653, 51.6770, -3.3861



68.6090, -43.2144, 19.4024

Split Complementary

Split-complementary colors differ from the complementary color scheme. The scheme consists of three colors, the original color and two neighbors of the complement color.



44.3665, -36.7240, -17.4764



44.3653, 51.6770, -3.3861



44.3665, -32.7902, 21.3163

Square

The Square scheme is like the rectangle color scheme, but the four colors are evenly spaced on the color wheel.



44.3665, 51.6739, -3.3849



44.3665, 3.5030, 27.3501



44.3665, -38.7654, 7.5242



44.3665, -7.9519, -64.4898

Rectangle

The Rectangle color scheme consists of four colors that form a rectangle on the color wheel.



44.3653, 51.6770, -3.3861



44.3665, 35.7922, 22.7404



44.3665, -38.7654, 7.5242



44.3665, -30.8399, -37.5225

Sweetspot

The Sweet Spot groups the original color and five complimentary colors.



44.3665, 51.6739, -3.3849



84.4823, 16.3379, -0.1175



38.7678, 45.2866, -63.6509



38.0719, 9.0991, -0.3796

0.0000, NaN, NaN



46.2646, -2.4686, 2.5136

Same Dimension

The Same Dimension uses a secret algorithm to generate beautiful new colors.



44.3665, 51.6739, -3.3849



51.6279, 77.4813, -1.4765



43.2074, 44.2370, 18.5069



33.6185, 1.8734, 0.9301



29.4192, 52.3352, 3.8628



6.7957, 12.2996, -0.7388

Inverse Universe

The Inverse Universe completely reimagines the original color for something new.



44.3665, 51.6739, -3.3849



51.6279, 77.4813, -1.4765



69.6343, -31.7394, -6.8250



33.6185, 1.8734, 0.9301



29.4192, 52.3352, 3.8628



6.7957, 12.2996, -0.7388

Previews

White Background



This preview shows how the HunterLab color 44.3653, 51.6770, -3.3861 looks on a white background.

Color Contrast Check

Large Text (above 18pt) WCAG AA ✓ Pass

Any Text WCAG AA × Fail

Large Text (above 18pt) WCAG AAA × Fail

Any Text WCAG AAA × Fail

Black Background



This preview shows how the HunterLab color 44.3653, 51.6770, -3.3861 looks on a black background.

Color Contrast Check

Large Text (above 18pt) WCAG AA ✓ Pass

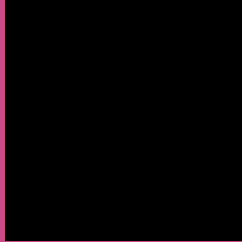
Any Text WCAG AA ✓ Pass

Large Text (above 18pt) WCAG AAA ✓ Pass

Any Text WCAG AAA × Fail

If you want to check with other color combinations, try the [Color Contrast Checker](#).

HunterLab 44.3653, 51.6770, -3.3861 Background



This preview shows how black text looks on a background with the HunterLab color 44.3653, 51.6770, -3.3861.



This preview shows how white text looks on a background with the HunterLab color 44.3653, 51.6770, -3.3861.

-3.3861.

Color Blindness Simulation

Color vision deficiency is a very complex topic, and I could not describe the different causes any better than Wikipedia does, so if you want to learn more, you should check out their [article about color blindness](#).

Dichromacy



Original Color

44.3653, 51.6770, -3.3861

Protanopia

44.7603, 3.1330, -22.0848

Deuteranopia

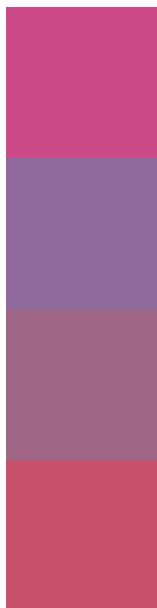
44.6656, 2.8073, -0.4620



Tritanopia

44.3314, 39.9187, 15.0789

Trichromacy



Original Color

44.3653, 51.6770, -3.3861

Protanomaly

42.9730, 18.8345, -17.2007

Deuteranomaly

43.3184, 20.5415, -3.3196

Tritanomaly

44.1621, 43.7855, 9.3043

Monochromacy



Original Color

44.3653, 51.6770, -3.3861

Achromatopsia

43.3383, -2.3124, 2.3547

Achromatomaly

42.1736, 16.6812, -1.4704

CSS Examples

Text

The CSS property to change the color of the text to HunterLab 44.3653, 51.6770, -3.3861 is called "color". The color property can be set on classes, ids or directly on the HTML element.

This example shows how text in the color `rgb(205, 74, 137)` looks like.

```
.text, #text, p{  
    color:rgb(205, 74, 137)  
}
```

If you want to add a text shadow in that color use the text-shadow property, you can generate a text shadow directly with our [CSS Text Shadow Generator](#).

Here you see how black text with a 4 pixel rgb(205, 74, 137) colored shadow looks like.

```
.shadow{ text-shadow: 4px 4px 2px rgb(205, 74, 137) }
```

Border

The CSS property to change the border of an element to HunterLab 44.3653, 51.6770, -3.3861 is called "border". The border property can be set on classes, ids or directly on the HTML element.

This example shows the color as border, it can be applied via the CSS property "border" or "border-color".

```
.border, #border, table{ border:4px solid rgb(205, 74, 137) }
```


If only the border color should be changed use the property `border-color`.

```
.border{ border-color:rgb(205, 74, 137) }
```

If you want to add a box shadow in that color use:

Here you see how a box with a 4 pixel `rgb(205, 74, 137)` colored shadow looks like.

```
.boxshadow{ -moz-box-shadow:4px 4px 4px  
4px rgb(205, 74, 137); -webkit-box-  
shadow:4px 4px 4px 4px rgb(205, 74, 137);  
box-shadow:4px 4px 4px 4px rgb(205, 74,  
137) }
```

Background

The CSS property to change the background color of an element to HunterLab 44.3653, 51.6770, -3.3861 is called "background". The background property can be set on classes, ids or directly on the HTML element.

```
.background, #background, body{  
background: rgb(205, 74, 137) }
```

If only the background color should be changed can be used:

```
.background{ background-color: rgb(205, 74,  
137) }
```

This example shows the color as background, it is applied via the CSS property "background".

To optimize and compress your CSS code, you can use our [online CSS compressor and optimizer](#) based on csstidy. If you want to create a linear or radial gradient as background or border, check our [CSS Gradient Generator](#).

Hey! You found this booklet interesting? Support Converting Colors with the new Membership Option!

The pro membership hides all ads, plus gives you double the colors in the color bucket, and more awesome pro features!

[Learn more, Memberships starting at \\$2.50/m!](#)

**Follow me
on Twitter!**

@ConvertingColor