

Converting Colors

HunterLab(44.4358, 4.0218,
12.7505)

Have a look what the booklet for
HunterLab(44.4358, 4.0218,
12.7505) contains.

HunterLab(44.3600, 4.1624, 12.6164)	3
<i>Conversions</i>	4
<i>Details</i>	6
<i>Harmonies</i>	12
<i>Previews</i>	24
<i>Color Blindness Simulation</i>	28
<i>CSS Examples</i>	31

Color

**HunterLab(44.3600, 4.1624,
12.6164)**

Conversions

Conversions Part 1

Format	Color
Hex	927560
RGB	146, 117, 96
RGB Percent	57%, 46%, 38%
CMY	0.4275, 0.5412, 0.6235
CMYK	0.00, 0.20, 0.34, 0.43
HSL	25°, 21%, 47%
HSV	25°, 34%, 57%
XYZ	20.3267, 19.6781, 13.7933
YIQ	123.2770, 24.0250, -0.3830

Conversions

Conversions Part 2

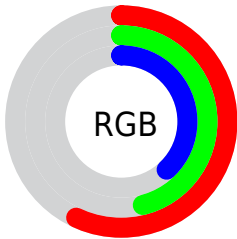
Format	Color
R_{YB}	146, 132, 96
Decimal	9598304
CIE _{Lab}	51.47, 8.18, 15.88
CIE _{LCh}	51, 17.867, 62.756
Yxy	19.6790, 0.3778, 0.3658
Android (android.graphics.Color)	4287788384 (0xFF927560)
YUV	123.2770, -13.4476, 19.9281
Hunter-Lab	44.3600, 4.1624, 12.6164

Details

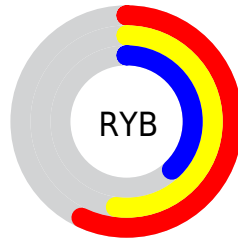
The HunterLab color $44.3600, 4.1624, 12.6164$ is a dark color, and the websafe version is hex 996666 . A complement of this color would be $43.8506, -6.1309, -9.8558$, and the grayscale version is $44.6580, -2.3828, 2.4264$.

A 20% lighter version of the original color is $65.4981, 4.0415, 15.4430$, and $26.2035, 4.0079, 9.3887$ is the 20% darker color. If you saturate the color by 10%, you get $41.8925, 6.6812, 14.8015$, and if you desaturate by 10%, it is $46.9432, 1.8639, 10.1096$.

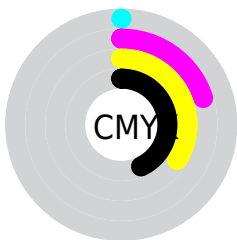
Distribution



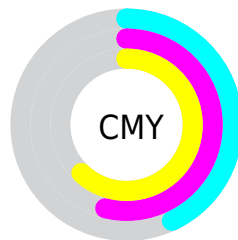
- Red (57%)
- Green (46%)
- Blue (38%)



- Red (57%)
- Yellow (52%)
- Blue (38%)



- Cyan (0%)
- Magenta (20%)
- Yellow (34%)
- Black (43%)



- Cyan (43%)
- Magenta (54%)
- Yellow (62%)

Brightness & Saturation Gradients

These gradients show how the HunterLab color 44.3600, 4.1624, 12.6164 changes by changing the brightness by 10 percent. The first figure shows a shift by +10% for each color and the second figure -10%.

Similar to the brightness gradients but the following saturation gradients show a change of the HunterLab color 44.3600, 4.1624, 12.6164 by changing the saturation by 10% instead.

■ 44.3600, 4.1624,
12.6164

■ 44.3600, 4.1624,
12.6164

158.1683, 1.3701,
25.5034

■ 34.8740, 4.1934,
11.0825

■ 65.4816, 3.8905,
15.5641

■ 26.1803, 4.1437,
9.4791

■ 77.0256, 3.6676,
17.0021

■ 18.3603, 3.9951,
7.7686

■ 89.1781, 3.3932,
18.4270

■ 11.5254, 3.7225,
6.6669

■ 101.9099, 3.0715,
19.8442

■ 4.0373, 8.6121,
2.8261

115.1959, 2.7057,
21.2577

0.0000, NaN, NaN

0.0000, NaN, NaN

129.0138, 2.2987,

22.6706

0.0000, NaN, NaN

143.3438, 1.8528,
24.0852

0.0000, NaN, NaN

■ 44.3600, 4.1624,
12.6164

■ 44.3600, 4.1624,
12.6164

■ 41.8925, 6.6812,
14.8015

■ 46.9432, 1.8639,
10.1096

■ 39.5494, 9.4339,
16.6214

■ 49.6285, -0.2223,
7.3172

■ 37.3448, 12.4196,
18.0334

■ 52.4074, -2.1131,
4.2738

■ 35.2925, 15.6271,
18.9965

■ 55.2717, -3.8245,
1.0085

■ 33.4068, 19.0275,
19.4795

■ 58.2140, -5.3723,
-2.4533

■ 31.7008, 22.5667,
19.4777

■ 61.2281, -6.7717,
-6.0901

■ 30.7957, 24.5916,
19.4067

■ 64.3083, -8.0364,
-9.8835

■ 67.4496, -9.1794,
-13.8178

■ 70.6477, -10.2122,
-17.8796

Harmonies

Analogous

The Analogous color harmony consists of three colors that are next to each other on the color wheel.



44.3610, 9.9089, 8.9772



44.3600, 4.1624, 12.6164



44.3610, -3.0344, 13.6760

Triad

The Triadic color harmony groups three colors that are evenly spaced from another and form a triangle on the color wheel.



44.3610, 4.1607, 12.6170



44.3610, -15.3915, 1.7755



44.3610, 5.3879, -10.1771

Complementary

The Complementary color scheme is a pair of colors which are on the opposite of each other on the color wheel.



44.3600, 4.1624, 12.6164



43.8506, -6.1309, -9.8558

Split Complementary

Split-complementary colors differ from the complementary color scheme. The scheme consists of three colors, the original color and two neighbors of the complement color.



44.3610, -1.7004, -12.8904



44.3600, 4.1624, 12.6164



44.3610, -13.4423, -5.3344

Square

The Square scheme is like the rectangle color scheme, but the four colors are evenly spaced on the color wheel.



44.3610, 4.1607, 12.6170



44.3610, -14.0403, 8.0404



44.3610, -8.5423, -10.9914



44.3610, 10.6487, -4.0604

Rectangle

The Rectangle color scheme consists of four colors that form a rectangle on the color wheel.



44.3600, 4.1624, 12.6164



44.3610, -7.6083, 12.9407



44.3610, -8.5423, -10.9914



44.3610, 3.1246, -11.5580

Sweetspot

The Sweet Spot groups the original color and five complimentary colors.



44.3610, 4.1607, 12.6170



67.3946, -1.3407, 8.1221



39.9523, 18.3203, -3.9370



31.5709, -0.4822, 4.0660



85.4018, -4.5568, 4.6400



33.5864, -1.7921, 1.8248

Same Dimension

The Same Dimension uses a secret algorithm to generate beautiful new colors.



44.3610, 4.1607, 12.6170



56.4191, 8.0371, 19.0005



51.2367, -7.3983, 18.6363



24.8834, -0.5840, 2.8363



28.9620, 22.8859, 18.2469



3.9854, 0.8271, 2.4703

Inverse Universe

The Inverse Universe completely reimagines the original color for something new.



43.8506, -6.1309, -9.8558



55.5938, -8.4385, -17.0542



37.0253, 5.5232, -20.6355



24.8153, -1.9798, -0.2015



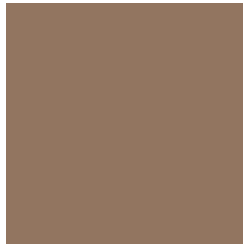
27.4641, 0.1892, -34.7362



3.8828, -1.2744, -2.1023

Previews

White Background



This preview shows how the HunterLab color 44.3600, 4.1624, 12.6164 looks on a white background.

Color Contrast Check

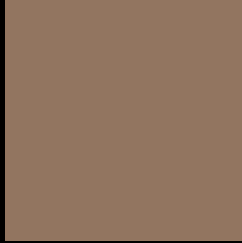
Large Text (above 18pt) WCAG AA ✓ Pass

Any Text WCAG AA × Fail

Large Text (above 18pt) WCAG AAA × Fail

Any Text WCAG AAA × Fail

Black Background



This preview shows how the HunterLab color 44.3600, 4.1624, 12.6164 looks on a black background.

Color Contrast Check

Large Text (above 18pt) WCAG AA ✓ Pass

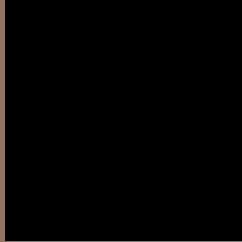
Any Text WCAG AA ✓ Pass

Large Text (above 18pt) WCAG AAA ✓ Pass

Any Text WCAG AAA × Fail

If you want to check with other color combinations, try the [Color Contrast Checker](#).

HunterLab 44.3600, 4.1624, 12.6164 Background



This preview shows how black text looks on a background with the HunterLab color 44.3600, 4.1624, 12.6164.



This preview shows how white text looks on a background with the HunterLab color 44.3600, 4.1624,

Color Blindness Simulation

Color vision deficiency is a very complex topic, and I could not describe the different causes any better than Wikipedia does, so if you want to learn more, you should check out their [article about color blindness](#).

Dichromacy



Original Color

44.3600, 4.1624, 12.6164

Protanopia

44.5113, -3.5414, 11.6420

Deuteranopia

44.4192, 3.0040, 12.6524



Tritanopia

44.2775, 10.4488, 2.8113

Trichromacy



Original Color

44.3600, 4.1624, 12.6164

Protanomaly

44.4869, -0.8324, 11.9977

Deuteranomaly

44.5209, 3.3451, 12.7548

Tritanomaly

44.1846, 8.3654, 6.4090

Monochromacy



Original Color

44.3600, 4.1624, 12.6164

Achromatopsia

44.5050, -2.3747, 2.4180

Achromatomaly

44.3760, -0.5152, 6.4619

CSS Examples

Text

The CSS property to change the color of the text to HunterLab 44.3600, 4.1624, 12.6164 is called "color". The color property can be set on classes, ids or directly on the HTML element.

This example shows how text in the color `rgb(146, 117, 96)` looks like.

```
.text, #text, p{  
    color:rgb(146, 117, 96)  
}
```

If you want to add a text shadow in that color use the text-shadow property, you can generate a text shadow directly with our [CSS Text Shadow Generator](#).

Here you see how black text with a 4 pixel rgb(146, 117, 96) colored shadow looks like.

```
.shadow{ text-shadow: 4px 4px 2px rgb(146, 117, 96) }
```

Border

The CSS property to change the border of an element to HunterLab 44.3600, 4.1624, 12.6164 is called "border". The border property can be set on classes, ids or directly on the HTML element.

This example shows the color as border, it can be applied via the CSS property "border" or "border-color".

```
.border, #border, table{ border:4px solid rgb(146, 117, 96) }
```


If only the border color should be changed use the property border-color.

```
.border{ border-color:rgb(146, 117, 96) }
```

If you want to add a box shadow in that color use:

Here you see how a box with a 4 pixel rgb(146, 117, 96) colored shadow looks like.

```
.boxshadow{ -moz-box-shadow:4px 4px 4px  
4px rgb(146, 117, 96); -webkit-box-  
shadow:4px 4px 4px 4px rgb(146, 117, 96);  
box-shadow:4px 4px 4px 4px rgb(146, 117,  
96) }
```

Background

The CSS property to change the background color of an element to HunterLab 44.3600, 4.1624, 12.6164 is called "background". The background property can be set on classes, ids or directly on the HTML element.

```
.background, #background, body{  
background: rgb(146, 117, 96) }
```

If only the background color should be changed can be used:

```
.background{ background-color: rgb(146,  
117, 96) }
```

This example shows the color as background, it is applied via the CSS property "background".

To optimize and compress your CSS code, you can use our [online CSS compressor and optimizer](#) based on csstidy. If you want to create a linear or radial gradient as background or border, check our [CSS Gradient Generator](#).

Hey! You found this booklet interesting? Support Converting Colors with the new Membership Option!

The pro membership hides all ads, plus gives you double the colors in the color bucket, and more awesome pro features!

[Learn more, Memberships starting at \\$2.50/m!](#)

**Follow me
on Twitter!**

@ConvertingColor