

Converting Colors

HunterLab(44.4368, 4.1557,
10.9330)

Have a look what the booklet for
HunterLab(44.4368, 4.1557,
10.9330) contains.

HunterLab(44.3643, 4.3909, 10.9599)	3
<i>Conversions</i>	4
<i>Details</i>	6
<i>Harmonies</i>	12
<i>Previews</i>	24
<i>Color Blindness Simulation</i>	28
<i>CSS Examples</i>	31

Color

**HunterLab(44.3643, 4.3909,
10.9599)**

Conversions

Conversions Part 1

Format	Color
Hex	917565
RGB	145, 117, 101
RGB Percent	57%, 46%, 40%
CMY	0.4314, 0.5412, 0.6039
CMYK	0.00, 0.19, 0.30, 0.43
HSL	22°, 18%, 48%
HSV	22°, 30%, 57%
XYZ	20.3873, 19.6819, 15.0364
YIQ	123.5480, 21.8240, 0.9600

Conversions

Conversions Part 2

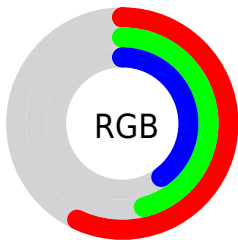
Format	Color
R_{YB}	145, 126, 101
Decimal	9532773
CIE _{Lab}	51.48, 8.46, 12.96
CIE _{LCh}	51, 15.476, 56.875
Yxy	19.6828, 0.3700, 0.3572
Android (android.graphics.Color)	4287722853 (0xFF917565)
YUV	123.5480, -11.1162, 18.8134
Hunter-Lab	44.3643, 4.3909, 10.9599

Details

The HunterLab color **44.3643, 4.3909, 10.9599** is a dark color, and the websafe version is hex **996666**. A complement of this color would be **45.2889, -7.0197, -7.2857**, and the grayscale version is **44.7555, -2.3880, 2.4316**.

A 20% lighter version of the original color is **65.5151, 4.3435, 13.5630**, and **26.2722, 4.3697, 8.3891** is the 20% darker color. If you saturate the color by 10%, you get **41.6869, 7.1890, 13.1403**, and if you desaturate by 10%, it is **47.1696, 1.8064, 8.5195**.

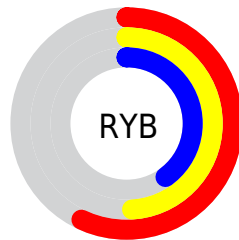
Distribution



Red (57%)

Green (46%)

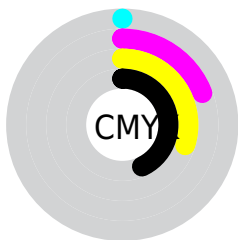
Blue (40%)



Red (57%)

Yellow (49%)

Blue (40%)

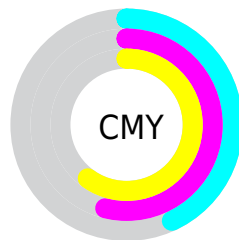


Cyan (0%)

Magenta (19%)

Yellow (30%)

Black (43%)



Cyan (43%)

Magenta (54%)

Yellow (60%)

Brightness & Saturation Gradients

These gradients show how the HunterLab color 44.3643, 4.3909, 10.9599 changes by changing the brightness by 10 percent. The first figure shows a shift by +10% for each color and the second figure -10%.

Similar to the brightness gradients but the following saturation gradients show a change of the HunterLab color 44.3643, 4.3909, 10.9599 by changing the saturation by 10% instead.

■ 44.3643, 4.3909,
10.9599

■ 44.3643, 4.3909,
10.9599

158.1749, 1.7081,
22.5465

■ 34.8779, 4.4064,
9.6281

■ 65.4865, 4.1474,
13.5540

■ 26.1839, 4.3399,
8.2505

■ 77.0308, 3.9375,
14.8338

■ 18.3635, 4.1733,
6.7982

■ 89.1835, 3.6756,
16.1102

■ 11.5282, 3.8806,
5.6152

■ 101.9156, 3.3658,
17.3871

■ 4.0433, 8.8986,
2.8303

115.2018, 3.0115,
18.6673

0.0000, NaN, NaN

0.0000, NaN, NaN

129.0199, 2.6156,

19.9529

0.0000, NaN, NaN

143.3501, 2.1804,
21.2455

0.0000, NaN, NaN

■ 44.3643, 4.3909,
10.9599

■ 44.3643, 4.3909,
10.9599

■ 41.6869, 7.1890,
13.1403

■ 47.1696, 1.8064,
8.5195

■ 39.1491, 10.2143,
15.0171

■ 50.0870, -0.5736,
5.8534

■ 36.7684, 13.4648,
16.5442

■ 53.1061, -2.7669,
2.9927

■ 34.5630, 16.9255,
17.6731

■ 56.2175, -4.7903,
-0.0369

■ 32.5520, 20.5596,
18.3596

■ 59.4127, -6.6604,
-3.2144

■ 30.7545, 24.3008,
18.5752

■ 62.6844, -8.3926,
-6.5222

■ 29.2269, 27.8719,
18.4974

■ 66.0265, -10.0012,
-9.9458

■ 69.4334, -11.4989,
-13.4730

■ 72.9004, -12.8973,
-17.0937

Harmonies

Analogous

The Analogous color harmony consists of three colors that are next to each other on the color wheel.



44.3653, 8.8650, 7.2774



44.3643, 4.3909, 10.9599



44.3653, -1.7127, 12.3791

Triad

The Triadic color harmony groups three colors that are evenly spaced from another and form a triangle on the color wheel.



44.3653, 4.3893, 10.9605



44.3653, -13.7411, 3.0335



44.3653, 3.1937, -9.0383

Complementary

The Complementary color scheme is a pair of colors which are on the opposite of each other on the color wheel.



44.3643, 4.3909, 10.9599



45.2889, -7.0197, -7.2857

Split Complementary

Split-complementary colors differ from the complementary color scheme. The scheme consists of three colors, the original color and two neighbors of the complement color.



44.3653, -3.0227, -10.5813



44.3643, 4.3909, 10.9599



44.3653, -12.5867, -3.0689

Square

The Square scheme is like the rectangle color scheme, but the four colors are evenly spaced on the color wheel.



44.3653, 4.3893, 10.9605



44.3653, -11.9906, 8.2180



44.3653, -8.7466, -8.2636



44.3653, 8.1483, -4.2963

Rectangle

The Rectangle color scheme consists of four colors that form a rectangle on the color wheel.



44.3643, 4.3909, 10.9599



44.3653, -5.8040, 12.0195



44.3653, -8.7466, -8.2636



44.3653, 1.1725, -9.9744

Sweetspot

The Sweet Spot groups the original color and five complimentary colors.



44.3653, 4.3893, 10.9605



67.4883, -1.1194, 7.4030



41.1440, 16.2126, -4.5946



31.5844, -0.3392, 3.7222



85.4018, -4.5568, 4.6400



33.5864, -1.7921, 1.8248

Same Dimension

The Same Dimension uses a secret algorithm to generate beautiful new colors.



44.3653, 4.3893, 10.9605



57.0541, 8.2397, 16.5801



50.2508, -5.6272, 16.3389



23.9274, -0.3991, 2.6216



27.1532, 25.5868, 17.1796



3.3131, 0.9884, 2.0588

Inverse Universe

The Inverse Universe completely reimagines the original color for something new.



45.2889, -7.0197, -7.2857



58.5300, -10.0832, -12.7071



39.3093, 2.9476, -16.1306



24.0642, -2.0753, -0.0619



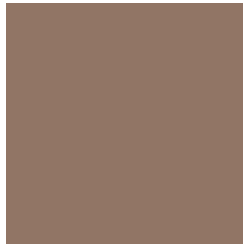
28.9970, -3.2765, -29.1707



3.4990, -1.2900, -1.5889

Previews

White Background



This preview shows how the HunterLab color 44.3643, 4.3909, 10.9599 looks on a white background.

Color Contrast Check

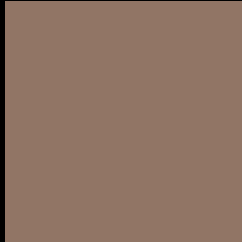
Large Text (above 18pt) WCAG AA ✓ Pass

Any Text WCAG AA × Fail

Large Text (above 18pt) WCAG AAA × Fail

Any Text WCAG AAA × Fail

Black Background



This preview shows how the HunterLab color 44.3643, 4.3909, 10.9599 looks on a black background.

Color Contrast Check

Large Text (above 18pt) WCAG AA ✓ Pass

Any Text WCAG AA ✓ Pass

Large Text (above 18pt) WCAG AAA ✓ Pass

Any Text WCAG AAA × Fail

If you want to check with other color combinations, try the [Color Contrast Checker](#).

HunterLab 44.3643, 4.3909, 10.9599 Background



This preview shows how black text looks on a background with the HunterLab color 44.3643, 4.3909, 10.9599.



This preview shows how white text looks on a background with the HunterLab color 44.3643, 4.3909,

Color Blindness Simulation

Color vision deficiency is a very complex topic, and I could not describe the different causes any better than Wikipedia does, so if you want to learn more, you should check out their [article about color blindness](#).

Dichromacy



Original Color

44.3643, 4.3909, 10.9599

Protanopia

44.5337, -3.2416, 9.9484

Deuteranopia

44.3252, 2.9024, 10.8952



Tritanopia

44.3483, 9.4305, 2.4400

Trichromacy



Original Color

44.3643, 4.3909, 10.9599

Protanomaly

44.5027, -0.5590, 10.3168

Deuteranomaly

44.4253, 3.2384, 10.9999

Tritanomaly

44.2835, 7.4714, 5.7020

Monochromacy



Original Color

44.3643, 4.3909, 10.9599

Achromatopsia

44.8950, -2.3955, 2.4392

Achromatomaly

44.5435, 0.2135, 5.4582

CSS Examples

Text

The CSS property to change the color of the text to HunterLab 44.3643, 4.3909, 10.9599 is called "color". The color property can be set on classes, ids or directly on the HTML element.

This example shows how text in the color `rgb(145, 117, 101)` looks like.

```
.text, #text, p{  
    color:rgb(145, 117, 101)  
}
```

If you want to add a text shadow in that color use the text-shadow property, you can generate a text shadow directly with our [CSS Text Shadow Generator](#).

Here you see how black text with a 4 pixel rgb(145, 117, 101) colored shadow looks like.

```
.shadow{ text-shadow: 4px 4px 2px rgb(145, 117, 101) }
```

Border

The CSS property to change the border of an element to HunterLab 44.3643, 4.3909, 10.9599 is called "border". The border property can be set on classes, ids or directly on the HTML element.

This example shows the color as border, it can be applied via the CSS property "border" or "border-color".

```
.border, #border, table{ border:4px solid rgb(145, 117, 101) }
```


If only the border color should be changed use the property `border-color`.

```
.border{ border-color:rgb(145, 117, 101) }
```

If you want to add a box shadow in that color use:

Here you see how a box with a 4 pixel `rgb(145, 117, 101)` colored shadow looks like.

```
.boxshadow{ -moz-box-shadow:4px 4px 4px  
4px rgb(145, 117, 101); -webkit-box-  
shadow:4px 4px 4px 4px rgb(145, 117, 101);  
box-shadow:4px 4px 4px 4px rgb(145, 117,  
101) }
```

Background

The CSS property to change the background color of an element to HunterLab 44.3643, 4.3909, 10.9599 is called "background". The background property can be set on classes, ids or directly on the HTML element.

```
.background, #background, body{  
background: rgb(145, 117, 101) }
```

If only the background color should be changed can be used:

```
.background{ background-color: rgb(145,  
117, 101) }
```

This example shows the color as background, it is applied via the CSS property "background".

To optimize and compress your CSS code, you can use our [online CSS compressor and optimizer](#) based on csstidy. If you want to create a linear or radial gradient as background or border, check our [CSS Gradient Generator](#).

Hey! You found this booklet interesting? Support Converting Colors with the new Membership Option!

The pro membership hides all ads, plus gives you double the colors in the color bucket, and more awesome pro features!

[Learn more, Memberships starting at \\$2.50/m!](#)

**Follow me
on Twitter!**

@ConvertingColor