

Converting Colors

HunterLab(44.6603, 10.7026,
18.8525)

Have a look what the booklet for
HunterLab(44.6603, 10.7026,
18.8525) contains.

HunterLab(44.5902, 10.7100, 18.8127)	3
<i>Conversions</i>	4
<i>Details</i>	6
<i>Harmonies</i>	12
<i>Previews</i>	24
<i>Color Blindness Simulation</i>	28
<i>CSS Examples</i>	31

Color

**HunterLab(44.5902, 10.7100,
18.8127)**

Conversions

Conversions Part 1

Format	Color
Hex	A3704B
RGB	163, 112, 75
RGB Percent	64%, 44%, 29%
CMY	0.3608, 0.5608, 0.7059
CMYK	0.00, 0.31, 0.54, 0.36
HSL	25°, 37%, 47%
HSV	25°, 54%, 64%
XYZ	22.1684, 19.8829, 9.3260
YIQ	123.0310, 42.2730, -0.6950

Conversions

Conversions Part 2

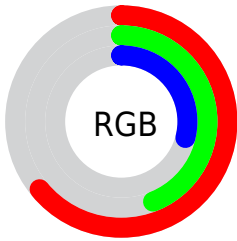
Format	Color
RYB	163, 139, 75
Decimal	10711115
CIELab	51.71, 15.94, 28.57
CIELCh	52, 32.720, 60.837
Yxy	19.8838, 0.4315, 0.3870
Android (android.graphics.Color)	4288901195 (0xFFA3704B)
YUV	123.0310, -23.6793, 35.0528
Hunter-Lab	44.5902, 10.7100, 18.8127

Details

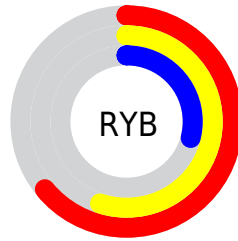
The HunterLab color **44.5902, 10.7100, 18.8127** is a dark color, and the websafe version is hex **996633**. A complement of this color would be **43.6589, -7.0090, -20.2761**, and the grayscale version is **44.5957, -2.3795, 2.4230**.

A 20% lighter version of the original color is **65.7433, 11.0082, 23.5064**, and **26.3603, 9.7487, 13.6511** is the 20% darker color. If you saturate the color by 10%, you get **42.0857, 14.1132, 20.4081**, and if you desaturate by 10%, it is **47.2562, 7.5702, 16.7480**.

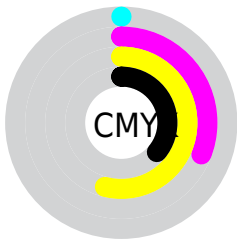
Distribution



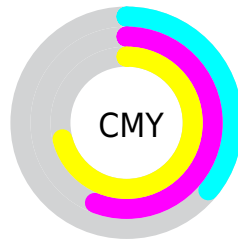
- Red (64%)
- Green (44%)
- Blue (29%)



- Red (64%)
- Yellow (55%)
- Blue (29%)



- Cyan (0%)
- Magenta (31%)
- Yellow (54%)
- Black (36%)



- Cyan (36%)
- Magenta (56%)
- Yellow (71%)

Brightness & Saturation Gradients

These gradients show how the HunterLab color 44.5902, 10.7100, 18.8127 changes by changing the brightness by 10 percent. The first figure shows a shift by +10% for each color and the second figure -10%.

Similar to the brightness gradients but the following saturation gradients show a change of the HunterLab color 44.5902, 10.7100, 18.8127 by changing the saturation by 10% instead.

■ 44.5902, 10.7100,
18.8127

■ 44.5902, 10.7100,
18.8127

158.5199, 10.9050,
37.6177

■ 35.0865, 10.3229,
16.3565

■ 65.7437, 11.2049,
23.3771

■ 26.3735, 9.8277,
13.7288

■ 77.3023, 11.3379,
25.5369

■ 18.5320, 9.2011,
10.9925

■ 89.4686, 11.4040,
27.6386

■ 11.6725, 8.4147,
8.1708

■ 102.2136, 11.4091,
29.6944

■ 4.3454, 15.7564,
3.0418

■ 115.5123, 11.3580,
31.7136

0.0000, NaN, NaN

0.0000, NaN, NaN

129.3423, 11.2547,

33.7035

0.0000, NaN, NaN

143.6841, 11.1028,
35.6700

0.0000, NaN, NaN

■ 44.5902, 10.7100,
18.8127

■ 44.5902, 10.7100,
18.8127

■ 42.0857, 14.1132,
20.4081

■ 47.2562, 7.5702,
16.7480

■ 39.7556, 17.7730,
21.4851

■ 50.0654, 4.6997,
14.2624

■ 37.6173, 21.6530,
22.0090

■ 53.0052, 2.0864,
11.4050

■ 35.6863, 25.6901,
21.9718

■ 56.0633, -0.2848,
8.2197

■ 34.6215, 28.1129,
21.8258

■ 59.2288, -2.4316,
4.7458

■ 62.4922, -4.3726,
1.0172

■ 65.8451, -6.1261,
-2.9368

■ 69.2800, -7.7094,
-7.0915

■ 72.7906, -9.1387,
-11.4256

Harmonies

Analogous

The Analogous color harmony consists of three colors that are next to each other on the color wheel.



44.5913, 21.6377, 13.1378



44.5902, 10.7100, 18.8127



44.5913, -2.7528, 20.4811

Triad

The Triadic color harmony groups three colors that are evenly spaced from another and form a triangle on the color wheel.



44.5913, 10.7078, 18.8133



44.5913, -25.0792, 2.0722



44.5913, 11.4259, -23.7601

Complementary

The Complementary color scheme is a pair of colors which are on the opposite of each other on the color wheel.



44.5902, 10.7100, 18.8127



43.6589, -7.0090, -20.2761

Split Complementary

Split-complementary colors differ from the complementary color scheme. The scheme consists of three colors, the original color and two neighbors of the complement color.



44.5913, -2.0093, -29.1932



44.5902, 10.7100, 18.8127



44.5913, -22.1945, -11.8489

Square

The Square scheme is like the rectangle color scheme, but the four colors are evenly spaced on the color wheel.



44.5913, 10.7078, 18.8133



44.5913, -22.4975, 12.6850



44.5913, -14.1163, -24.3062



44.5913, 22.0852, -11.0527

Rectangle

The Rectangle color scheme consists of four colors that form a rectangle on the color wheel.



44.5902, 10.7100, 18.8127



44.5913, -11.0769, 19.6413



44.5913, -14.1163, -24.3062



44.5913, 7.0355, -26.6394

Sweetspot

The Sweet Spot groups the original color and five complimentary colors.



44.5913, 10.7078, 18.8133



74.0685, 0.3243, 12.0209



37.8600, 34.6772, -7.1522



34.7218, 0.4417, 6.0972



90.9709, -4.8540, 4.9426



38.3822, -2.0480, 2.0854

Same Dimension

The Same Dimension uses a secret algorithm to generate beautiful new colors.



44.5913, 10.7078, 18.8133



55.6086, 19.9456, 27.6929



56.5329, -9.8708, 27.6810



27.4820, -0.6327, 3.1587



30.6624, 24.4295, 19.3217



5.3861, 1.4489, 3.3442

Inverse Universe

The Inverse Universe completely reimagines the original color for something new.



43.6589, -7.0090, -20.2761



54.0743, -8.1687, -34.8644



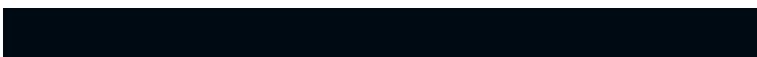
31.9772, 14.1242, -44.2946



27.4037, -2.1955, -0.2513



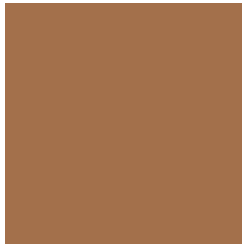
29.0373, 0.3676, -37.0877



5.1744, -1.4577, -3.3208

Previews

White Background



This preview shows how the HunterLab color 44.5902, 10.7100, 18.8127 looks on a white background.

Color Contrast Check

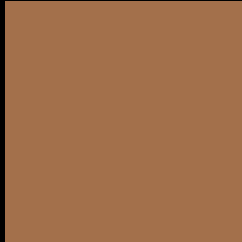
Large Text (above 18pt) WCAG AA ✓ Pass

Any Text WCAG AA × Fail

Large Text (above 18pt) WCAG AAA × Fail

Any Text WCAG AAA × Fail

Black Background



This preview shows how the HunterLab color 44.5902, 10.7100, 18.8127 looks on a black background.

Color Contrast Check

Large Text (above 18pt) WCAG AA ✓ Pass

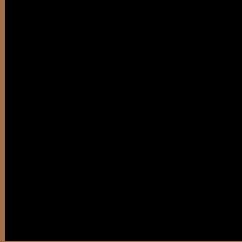
Any Text WCAG AA ✓ Pass

Large Text (above 18pt) WCAG AAA ✓ Pass

Any Text WCAG AAA × Fail

If you want to check with other color combinations, try the [Color Contrast Checker](#).

HunterLab 44.5902, 10.7100, 18.8127 Background



This preview shows how black text looks on a background with the HunterLab color 44.5902, 10.7100, 18.8127.



This preview shows how white text looks on a background with the HunterLab color 44.5902, 10.7100,

Color Blindness Simulation

Color vision deficiency is a very complex topic, and I could not describe the different causes any better than Wikipedia does, so if you want to learn more, you should check out their [article about color blindness](#).

Dichromacy



Original Color

44.5902, 10.7100, 18.8127

Protanopia

44.7752, -4.8022, 17.7111

Deuteranopia

44.6490, 2.9893, 18.9618



Tritanopia

44.5648, 18.4542, 6.2047

Trichromacy



Original Color

44.5902, 10.7100, 18.8127

Protanomaly

44.7244, 0.6312, 18.0149

Deuteranomaly

44.6696, 5.7402, 19.0267

Tritanomaly

44.5609, 15.2963, 11.6842

Monochromacy



Original Color

44.5902, 10.7100, 18.8127

Achromatopsia

44.5050, -2.3747, 2.4180

Achromatomaly

44.3143, 1.7204, 9.0926

CSS Examples

Text

The CSS property to change the color of the text to HunterLab 44.5902, 10.7100, 18.8127 is called "color". The color property can be set on classes, ids or directly on the HTML element.

This example shows how text in the color `rgb(163, 112, 75)` looks like.

```
.text, #text, p{  
    color:rgb(163, 112, 75)  
}
```

If you want to add a text shadow in that color use the text-shadow property, you can generate a text shadow directly with our [CSS Text Shadow Generator](#).

Here you see how black text with a 4 pixel rgb(163, 112, 75) colored shadow looks like.

```
.shadow{ text-shadow: 4px 4px 2px rgb(163, 112, 75) }
```

Border

The CSS property to change the border of an element to HunterLab 44.5902, 10.7100, 18.8127 is called "border". The border property can be set on classes, ids or directly on the HTML element.

This example shows the color as border, it can be applied via the CSS property "border" or "border-color".

```
.border, #border, table{ border:4px solid rgb(163, 112, 75) }
```


If only the border color should be changed use the property `border-color`.

```
.border{ border-color:rgb(163, 112, 75) }
```

If you want to add a box shadow in that color use:

Here you see how a box with a 4 pixel `rgb(163, 112, 75)` colored shadow looks like.

```
.boxshadow{ -moz-box-shadow:4px 4px 4px  
4px rgb(163, 112, 75); -webkit-box-  
shadow:4px 4px 4px 4px rgb(163, 112, 75);  
box-shadow:4px 4px 4px 4px rgb(163, 112,  
75) }
```

Background

The CSS property to change the background color of an element to HunterLab 44.5902, 10.7100, 18.8127 is called "background". The background property can be set on classes, ids or directly on the HTML element.

```
.background, #background, body{  
background: rgb(163, 112, 75) }
```

If only the background color should be changed can be used:

```
.background{ background-color: rgb(163,  
112, 75) }
```

This example shows the color as background, it is applied via the CSS property "background".

To optimize and compress your CSS code, you can use our [online CSS compressor and optimizer](#) based on csstidy. If you want to create a linear or radial gradient as background or border, check our [CSS Gradient Generator](#).

Hey! You found this booklet interesting? Support Converting Colors with the new Membership Option!

The pro membership hides all ads, plus gives you double the colors in the color bucket, and more awesome pro features!

[Learn more, Memberships starting at \\$2.50/m!](#)

**Follow me
on Twitter!**

@ConvertingColor