

Converting Colors

HunterLab(44.7541, 14.6692,
16.6048)

Have a look what the booklet for
HunterLab(44.7541, 14.6692,
16.6048) contains.

HunterLab(44.8517, 14.3363, 16.8009)	3
<i>Conversions</i>	4
<i>Details</i>	6
<i>Harmonies</i>	12
<i>Previews</i>	24
<i>Color Blindness Simulation</i>	28
<i>CSS Examples</i>	31

Color

**HunterLab(44.8517, 14.3363,
16.8009)**

Conversions

Conversions Part 1

Format	Color
Hex	A86E54
RGB	168, 110, 84
RGB Percent	66%, 43%, 33%
CMY	0.3412, 0.5686, 0.6706
CMYK	0.00, 0.35, 0.50, 0.34
HSL	19°, 33%, 49%
HSV	19°, 50%, 66%
XYZ	23.3246, 20.1167, 11.0410
YIQ	124.3780, 42.9140, 4.2100

Conversions

Conversions Part 2

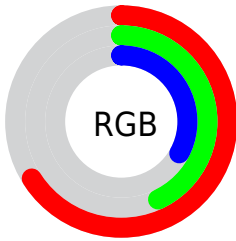
Format	Color
R_{YB}	168, 122, 84
Decimal	11038292
CIE _{Lab}	51.97, 20.06, 23.92
CIE _{LCh}	52, 31.225, 50.015
Yxy	20.1177, 0.4281, 0.3692
Android (android.graphics.Color)	4289228372 (0xFFA86E54)
YUV	124.3780, -19.9064, 38.2565
Hunter-Lab	44.8517, 14.3363, 16.8009

Details

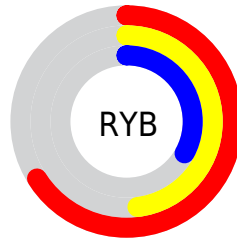
The HunterLab color **44.8517, 14.3363, 16.8009** is a dark color, and the websafe version is hex **996633**. A complement of this color would be **49.0478, -11.6044, -14.7617**, and the grayscale version is **45.1069, -2.4068, 2.4507**.

A 20% lighter version of the original color is **66.0072, 15.0346, 20.6775**, and **26.6381, 12.9044, 12.5588** is the 20% darker color. If you saturate the color by 10%, you get **41.8854, 18.6377, 18.5744**, and if you desaturate by 10%, it is **48.0442, 10.2868, 14.6539**.

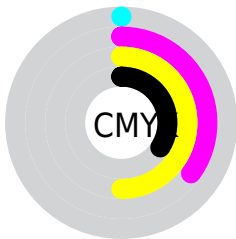
Distribution



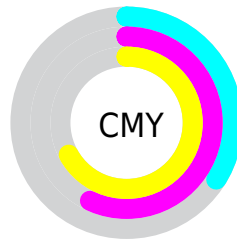
- Red (66%)
- Green (43%)
- Blue (33%)



- Red (66%)
- Yellow (48%)
- Blue (33%)



- Cyan (0%)
- Magenta (35%)
- Yellow (50%)
- Black (34%)



- Cyan (34%)
- Magenta (57%)
- Yellow (67%)

Brightness & Saturation Gradients

These gradients show how the HunterLab color 44.8517, 14.3363, 16.8009 changes by changing the brightness by 10 percent. The first figure shows a shift by +10% for each color and the second figure -10%.

Similar to the brightness gradients but the following saturation gradients show a change of the HunterLab color 44.8517, 14.3363, 16.8009 by changing the saturation by 10% instead.

■ 44.8517, 14.3363,
16.8009

■ 44.8517, 14.3363,
16.8009

158.9188, 16.0561,
33.3809

■ 35.3280, 13.7422,
14.6932

■ 66.0413, 15.2170,
20.7550

■ 26.5931, 13.0298,
12.4518

■ 77.6163, 15.5307,
22.6428

■ 18.7273, 12.1763,
10.0202

■ 89.7983, 15.7705,
24.4898

■ 11.8401, 11.1587,
8.2880

■ 102.5583, 15.9430,
26.3057

■ 4.6701, 18.4718,
3.2691

■ 115.8712, 16.0536,
28.0976

0.0000, NaN, NaN

0.0000, NaN, NaN

129.7151, 16.1067,

29.8713

0.0000, NaN, NaN

144.0701, 16.1065,
31.6312

0.0000, NaN, NaN

■ 44.8517, 14.3363,
16.8009

■ 44.8517, 14.3363,
16.8009

■ 41.8854, 18.6377,
18.5744

■ 48.0442, 10.2868,
14.6539

■ 39.1709, 23.1610,
19.9059

■ 51.4335, 6.5064,
12.1924

■ 36.7400, 27.8289,
20.7324

■ 54.9978, 2.9865,
9.4689

■ 34.6228, 32.5165,
21.0094

■ 58.7176, -0.2886,
6.5265

■ 32.8353, 37.0023,
20.8807

■ 62.5759, -3.3391,
3.3997

■ 32.8352, 37.0026,
20.8807

■ 66.5584, -6.1864,
0.1163

■ 70.6531, -8.8519,
-3.3016

■ 74.8494, -11.3557,
-6.8363

■ 79.1385, -13.7158,
-10.4738

Harmonies

Analogous

The Analogous color harmony consists of three colors that are next to each other on the color wheel.



44.8528, 22.8313, 9.6629



44.8517, 14.3363, 16.8009



44.8528, 1.9014, 19.7777

Triad

The Triadic color harmony groups three colors that are evenly spaced from another and form a triangle on the color wheel.



44.8528, 14.3340, 16.8015



44.8528, -23.9307, 6.2719



44.8528, 6.2396, -25.2045

Complementary

The Complementary color scheme is a pair of colors which are on the opposite of each other on the color wheel.



44.8517, 14.3363, 16.8009



49.0478, -11.6044, -14.7617

Split Complementary

Split-complementary colors differ from the complementary color scheme. The scheme consists of three colors, the original color and two neighbors of the complement color.



44.8528, -6.5367, -26.8579



44.8517, 14.3363, 16.8009



44.8528, -23.0439, -6.2249

Square

The Square scheme is like the rectangle color scheme, but the four colors are evenly spaced on the color wheel.



44.8528, 14.3340, 16.8015



44.8528, -19.5573, 14.9131



44.8528, -16.9838, -19.1597



44.8528, 17.8108, -15.1229

Rectangle

The Rectangle color scheme consists of four colors that form a rectangle on the color wheel.



44.8517, 14.3363, 16.8009



44.8528, -6.5491, 19.7766



44.8528, -16.9838, -19.1597



44.8528, 1.9147, -26.8544

Sweetspot

The Sweet Spot groups the original color and five complimentary colors.



44.8528, 14.3340, 16.8015



76.4296, 1.8993, 10.9167



40.7955, 34.7641, -11.9057



35.2125, 1.3056, 5.4664



92.0917, -4.9138, 5.0035



39.3538, -2.0998, 2.1382

Same Dimension

The Same Dimension uses a secret algorithm to generate beautiful new colors.



44.8528, 14.3340, 16.8015



56.0031, 25.7649, 25.2498



55.8234, -5.4488, 25.3942



28.1196, -0.2446, 3.0077



28.6773, 31.7490, 18.2266



5.3856, 2.6808, 3.3655

Inverse Universe

The Inverse Universe completely reimagines the original color for something new.



49.0478, -11.6044, -14.7617



62.6563, -16.0426, -25.2857



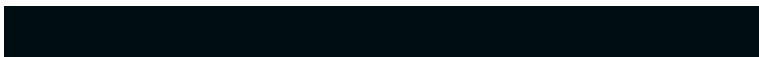
37.3908, 7.8859, -35.5647



28.5207, -2.6669, 0.0272



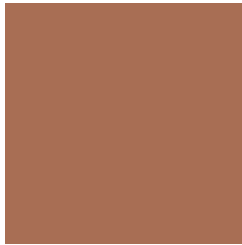
34.1470, -6.9606, -27.6549



6.0688, -2.1484, -2.9477

Previews

White Background



This preview shows how the HunterLab color 44.8517, 14.3363, 16.8009 looks on a white background.

Color Contrast Check

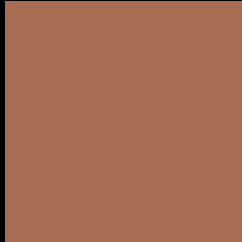
Large Text (above 18pt) WCAG AA ✓ Pass

Any Text WCAG AA × Fail

Large Text (above 18pt) WCAG AAA × Fail

Any Text WCAG AAA × Fail

Black Background



This preview shows how the HunterLab color 44.8517, 14.3363, 16.8009 looks on a black background.

Color Contrast Check

Large Text (above 18pt) WCAG AA ✓ Pass

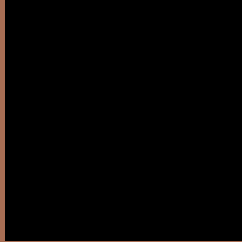
Any Text WCAG AA ✓ Pass

Large Text (above 18pt) WCAG AAA ✓ Pass

Any Text WCAG AAA × Fail

If you want to check with other color combinations, try the [Color Contrast Checker](#).

HunterLab 44.8517, 14.3363, 16.8009 Background



This preview shows how black text looks on a background with the HunterLab color 44.8517, 14.3363, 16.8009.



This preview shows how white text looks on a background with the HunterLab color 44.8517, 14.3363, 16.8009.

Color Blindness Simulation

Color vision deficiency is a very complex topic, and I could not describe the different causes any better than Wikipedia does, so if you want to learn more, you should check out their [article about color blindness](#).

Dichromacy



Original Color

44.8517, 14.3363, 16.8009

Protanopia

44.9687, -3.7340, 14.8907

Deuteranopia

44.9360, 2.8512, 17.2067



Tritanopia

44.7985, 20.2945, 6.8906

Trichromacy



Original Color

44.8517, 14.3363, 16.8009

Protanomaly

44.7317, 2.3761, 15.3677

Deuteranomaly

44.9258, 6.8718, 17.0032

Tritanomaly

44.6427, 18.1095, 10.7835

Monochromacy



Original Color

44.8517, 14.3363, 16.8009

Achromatopsia

44.8950, -2.3955, 2.4392

Achromatomaly

44.5794, 2.7580, 8.2757

CSS Examples

Text

The CSS property to change the color of the text to HunterLab 44.8517, 14.3363, 16.8009 is called "color". The color property can be set on classes, ids or directly on the HTML element.

This example shows how text in the color `rgb(168, 110, 84)` looks like.

```
.text, #text, p{  
    color:rgb(168, 110, 84)  
}
```

If you want to add a text shadow in that color use the text-shadow property, you can generate a text shadow directly with our [CSS Text Shadow Generator](#).

Here you see how black text with a 4 pixel rgb(168, 110, 84) colored shadow looks like.

```
.shadow{ text-shadow: 4px 4px 2px rgb(168, 110, 84) }
```

Border

The CSS property to change the border of an element to HunterLab 44.8517, 14.3363, 16.8009 is called "border". The border property can be set on classes, ids or directly on the HTML element.

This example shows the color as border, it can be applied via the CSS property "border" or "border-color".

```
.border, #border, table{ border:4px solid rgb(168, 110, 84) }
```


If only the border color should be changed use the property `border-color`.

```
.border{ border-color:rgb(168, 110, 84) }
```

If you want to add a box shadow in that color use:

Here you see how a box with a 4 pixel `rgb(168, 110, 84)` colored shadow looks like.

```
.boxshadow{ -moz-box-shadow:4px 4px 4px  
4px rgb(168, 110, 84); -webkit-box-  
shadow:4px 4px 4px 4px rgb(168, 110, 84);  
box-shadow:4px 4px 4px 4px rgb(168, 110,  
84) }
```

Background

The CSS property to change the background color of an element to HunterLab 44.8517, 14.3363, 16.8009 is called "background". The background property can be set on classes, ids or directly on the HTML element.

```
.background, #background, body{  
background: rgb(168, 110, 84) }
```

If only the background color should be changed can be used:

```
.background{ background-color: rgb(168,  
110, 84) }
```

This example shows the color as background, it is applied via the CSS property "background".

To optimize and compress your CSS code, you can use our [online CSS compressor and optimizer](#) based on csstidy. If you want to create a linear or radial gradient as background or border, check our [CSS Gradient Generator](#).

Hey! You found this booklet interesting? Support Converting Colors with the new Membership Option!

The pro membership hides all ads, plus gives you double the colors in the color bucket, and more awesome pro features!

[Learn more, Memberships starting at \\$2.50/m!](#)

**Follow me
on Twitter!**

@ConvertingColor