

Converting Colors

HunterLab(45.0403, 9.4568,
11.8907)

Have a look what the booklet for
HunterLab(45.0403, 9.4568,
11.8907) contains.

HunterLab(45.1106, 9.4371, 12.1159)	3
<i>Conversions</i>	4
<i>Details</i>	6
<i>Harmonies</i>	12
<i>Previews</i>	24
<i>Color Blindness Simulation</i>	28
<i>CSS Examples</i>	31

Color

**HunterLab(45.1106, 9.4371,
12.1159)**

Conversions

Conversions Part 1

Format	Color
Hex	9D7364
RGB	157, 115, 100
RGB Percent	62%, 45%, 39%
CMY	0.3843, 0.5490, 0.6078
CMYK	0.00, 0.27, 0.36, 0.38
HSL	16°, 23%, 50%
HSV	16°, 36%, 62%
XYZ	22.3356, 20.3497, 14.8072
YIQ	125.8480, 29.8470, 4.2390

Conversions

Conversions Part 2

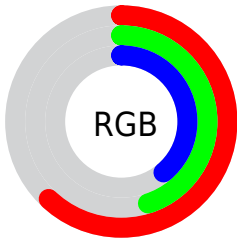
Format	Color
R_{YB}	157, 120, 100
Decimal	10318692
CIE _{Lab}	52.23, 14.45, 14.79
CIE _{LCh}	52, 20.677, 45.666
Yxy	20.3506, 0.3885, 0.3540
Android (android.graphics.Color)	4288508772 (0xFF9D7364)
YUV	125.8480, -12.7431, 27.3203
Hunter-Lab	45.1106, 9.4371, 12.1159

Details

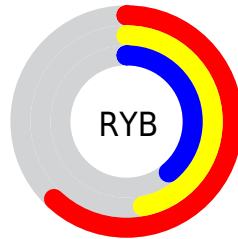
The HunterLab color $45.1106, 9.4371, 12.1159$ is a dark color, and the websafe version is hex 996666 . A complement of this color would be $49.4861, -10.8018, -7.9138$, and the grayscale version is $45.6582, -2.4362, 2.4807$.

A 20% lighter version of the original color is $66.3460, 9.9287, 14.8915$, and $26.8596, 8.5445, 9.2655$ is the 20% darker color. If you saturate the color by 10%, you get $41.9530, 13.4240, 14.1451$, and if you desaturate by 10%, it is $48.4669, 5.6863, 9.8633$.

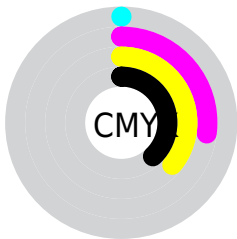
Distribution



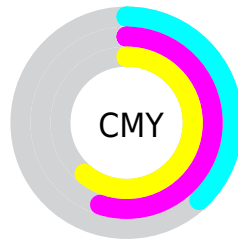
- Red (62%)
- Green (45%)
- Blue (39%)



- Red (62%)
- Yellow (47%)
- Blue (39%)



- Cyan (0%)
- Magenta (27%)
- Yellow (36%)
- Black (38%)



- Cyan (38%)
- Magenta (55%)
- Yellow (61%)

Brightness & Saturation Gradients

These gradients show how the HunterLab color 45.1106, 9.4371, 12.1159 changes by changing the brightness by 10 percent. The first figure shows a shift by +10% for each color and the second figure -10%.

Similar to the brightness gradients but the following saturation gradients show a change of the HunterLab color 45.1106, 9.4371, 12.1159 by changing the saturation by 10% instead.

■ 45.1106, 9.4371,
12.1159

■ 45.1106, 9.4371,
12.1159

159.3132, 9.0371,
24.5084

■ 35.5671, 9.1337,
10.6619

■ 66.3357, 9.7791,
14.9264

■ 26.8106, 8.7274,
9.1493

■ 77.9270, 9.8411,
16.3038

■ 18.9209, 8.1961,
7.5451

■ 90.1244, 9.8394,
17.6723

■ 12.0063, 7.5111,
6.2299

■ 102.8992, 9.7794,
19.0364

■ 4.9701, 12.4033,
3.4791

116.2263, 9.6656,
20.3997

0.0000, NaN, NaN

0.0000, NaN, NaN

130.0837, 9.5019,

21.7649

0.0000, NaN, NaN

144.4518, 9.2915,
23.1339

0.0000, NaN, NaN

■ 45.1106, 9.4371,
12.1159

■ 45.1106, 9.4371,
12.1159

■ 41.9530, 13.4240,
14.1451

■ 48.4669, 5.6863,
9.8633

■ 39.0186, 17.6416,
15.8950

■ 51.9948, 2.1716,
7.4287

■ 36.3398, 22.0491,
17.3026

■ 55.6749, -1.1242,
4.8466

■ 33.9508, 26.5666,
18.2999

■ 59.4903, -4.2202,
2.1432

■ 31.8856, 31.0614,
18.8266

■ 63.4263, -7.1373,
-0.6616

■ 30.1723, 35.3345,
18.8833

■ 67.4709, -9.8953,
-3.5524

■ 29.6253, 36.7804,
18.8989

■ 71.6139, -12.5129,
-6.5174

■ 75.8464, -15.0071,
-9.5476

■ 80.1611, -17.3927,
-12.6358

Harmonies

Analogous

The Analogous color harmony consists of three colors that are next to each other on the color wheel.



45.1117, 14.2098, 6.4086



45.1106, 9.4371, 12.1159



45.1117, 1.6570, 14.9440

Triad

The Triadic color harmony groups three colors that are evenly spaced from another and form a triangle on the color wheel.



45.1117, 9.4352, 12.1166



45.1117, -17.0087, 6.0943



45.1117, 2.0329, -14.9738

Complementary

The Complementary color scheme is a pair of colors which are on the opposite of each other on the color wheel.



45.1106, 9.4371, 12.1159



49.4861, -10.8018, -7.9138

Split Complementary

Split-complementary colors differ from the complementary color scheme. The scheme consists of three colors, the original color and two neighbors of the complement color.



45.1117, -6.3368, -15.1003



45.1106, 9.4371, 12.1159



45.1117, -16.9243, -1.8911

Square

The Square scheme is like the rectangle color scheme, but the four colors are evenly spaced on the color wheel.



45.1117, 9.4352, 12.1166



45.1117, -13.3853, 11.9229



45.1117, -13.1456, -9.9674



45.1117, 9.7277, -9.6482

Rectangle

The Rectangle color scheme consists of four colors that form a rectangle on the color wheel.



45.1106, 9.4371, 12.1159



45.1117, -3.9923, 15.2199



45.1117, -13.1456, -9.9674



45.1117, -0.8045, -15.6544

Sweetspot

The Sweet Spot groups the original color and five complimentary colors.



45.1117, 9.4352, 12.1166



72.0663, 0.6246, 8.2037



42.7296, 22.9787, -9.1884



33.5201, 0.5499, 4.0484



88.7363, -4.7347, 4.8212



36.4511, -1.9449, 1.9805

Same Dimension

The Same Dimension uses a secret algorithm to generate beautiful new colors.



45.1117, 9.4352, 12.1166



56.7419, 17.1667, 18.5552



52.5911, -3.8217, 18.7469



26.2983, -0.0842, 2.7086



26.7989, 32.8514, 17.0885



4.3763, 2.3604, 2.7380

Inverse Universe

The Inverse Universe completely reimagines the original color for something new.



49.4861, -10.8018, -7.9138



63.8331, -15.8866, -14.0054



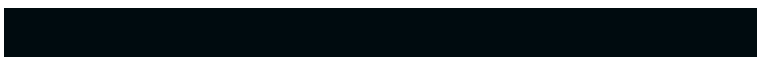
41.5150, 2.1070, -19.9376



26.8585, -2.6472, 0.1535



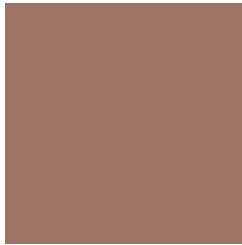
34.8189, -9.5858, -22.8277



5.3010, -2.1648, -1.9525

Previews

White Background



This preview shows how the HunterLab color 45.1106, 9.4371, 12.1159 looks on a white background.

Color Contrast Check

Large Text (above 18pt) WCAG AA ✓ Pass

Any Text WCAG AA × Fail

Large Text (above 18pt) WCAG AAA × Fail

Any Text WCAG AAA × Fail

Black Background



This preview shows how the HunterLab color 45.1106, 9.4371, 12.1159 looks on a black background.

Color Contrast Check

Large Text (above 18pt) WCAG AA ✓ Pass

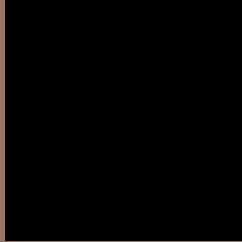
Any Text WCAG AA ✓ Pass

Large Text (above 18pt) WCAG AAA ✓ Pass

Any Text WCAG AAA × Fail

If you want to check with other color combinations, try the [Color Contrast Checker](#).

HunterLab 45.1106, 9.4371, 12.1159 Background



This preview shows how black text looks on a background with the HunterLab color 45.1106, 9.4371, 12.1159.



This preview shows how white text looks on a background with the HunterLab color 45.1106, 9.4371,

Color Blindness Simulation

Color vision deficiency is a very complex topic, and I could not describe the different causes any better than Wikipedia does, so if you want to learn more, you should check out their [article about color blindness](#).

Dichromacy



Original Color

45.1106, 9.4371, 12.1159

Protanopia

45.3792, -3.1066, 10.4466

Deuteranopia

45.2159, 3.0743, 12.4370



Tritanopia

45.0996, 14.2584, 4.2589

Trichromacy



Original Color

45.1106, 9.4371, 12.1159

Protanomaly

45.0741, 1.3927, 10.9198

Deuteranomaly

45.1018, 5.4037, 12.3683

Tritanomaly

45.0240, 12.3384, 7.3867

Monochromacy



Original Color

45.1106, 9.4371, 12.1159

Achromatopsia

45.6768, -2.4372, 2.4817

Achromatomaly

45.3010, 1.4483, 5.9130

CSS Examples

Text

The CSS property to change the color of the text to HunterLab 45.1106, 9.4371, 12.1159 is called "color". The color property can be set on classes, ids or directly on the HTML element.

This example shows how text in the color `rgb(157, 115, 100)` looks like.

```
.text, #text, p{  
    color:rgb(157, 115, 100)  
}
```

If you want to add a text shadow in that color use the text-shadow property, you can generate a text shadow directly with our [CSS Text Shadow Generator](#).

Here you see how black text with a 4 pixel rgb(157, 115, 100) colored shadow looks like.

```
.shadow{ text-shadow: 4px 4px 2px rgb(157, 115, 100) }
```

Border

The CSS property to change the border of an element to HunterLab 45.1106, 9.4371, 12.1159 is called "border". The border property can be set on classes, ids or directly on the HTML element.

This example shows the color as border, it can be applied via the CSS property "border" or "border-color".

```
.border, #border, table{ border:4px solid rgb(157, 115, 100) }
```


If only the border color should be changed use the property `border-color`.

```
.border{ border-color:rgb(157, 115, 100) }
```

If you want to add a box shadow in that color use:

Here you see how a box with a 4 pixel `rgb(157, 115, 100)` colored shadow looks like.

```
.boxshadow{ -moz-box-shadow:4px 4px 4px  
4px rgb(157, 115, 100); -webkit-box-  
shadow:4px 4px 4px 4px rgb(157, 115, 100);  
box-shadow:4px 4px 4px 4px rgb(157, 115,  
100) }
```

Background

The CSS property to change the background color of an element to HunterLab 45.1106, 9.4371, 12.1159 is called "background". The background property can be set on classes, ids or directly on the HTML element.

```
.background, #background, body{  
background: rgb(157, 115, 100) }
```

If only the background color should be changed can be used:

```
.background{ background-color: rgb(157,  
115, 100) }
```

This example shows the color as background, it is applied via the CSS property "background".

To optimize and compress your CSS code, you can use our [online CSS compressor and optimizer](#) based on csstidy. If you want to create a linear or radial gradient as background or border, check our [CSS Gradient Generator](#).

Hey! You found this booklet interesting? Support Converting Colors with the new Membership Option!

The pro membership hides all ads, plus gives you double the colors in the color bucket, and more awesome pro features!

[Learn more, Memberships starting at \\$2.50/m!](#)

**Follow me
on Twitter!**

@ConvertingColor