

Converting Colors

HunterLab(45.0870, 63.7221,
14.1265)

Have a look what the booklet for
HunterLab(45.0870, 63.7221,
14.1265) contains.

HunterLab(45.1868, 63.7531, 14.1210)	3
<i>Conversions</i>	4
<i>Details</i>	6
<i>Harmonies</i>	12
<i>Previews</i>	24
<i>Color Blindness Simulation</i>	28
<i>CSS Examples</i>	31

Color

**HunterLab(45.1868, 63.7531,
14.1210)**

Conversions

Conversions Part 1

Format	Color
Hex	E63761
RGB	230, 55, 97
RGB Percent	90%, 22%, 38%
CMY	0.0980, 0.7843, 0.6196
CMYK	0.00, 0.76, 0.58, 0.10
HSL	346°, 78%, 56%
HSV	346°, 76%, 90%
XYZ	36.1570, 20.4185, 13.3447
YIQ	112.1130, 90.8180, 50.1620

Conversions

Conversions Part 2

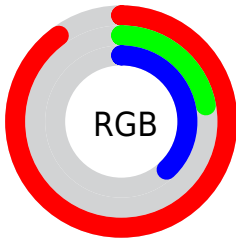
Format	Color
R_{YB}	230, 55, 97
Decimal	15087457
CIE _{Lab}	52.31, 67.86, 18.43
CIE _{LCh}	52, 70.315, 15.193
Yxy	20.4197, 0.5171, 0.2920
Android (android.graphics.Color)	4293277537 (0xFFE63761)
YUV	112.1130, -7.4507, 103.3869
Hunter-Lab	45.1868, 63.7531, 14.1210

Details

The HunterLab color **45.1868, 63.7531, 14.1210** is a dark color, and the websafe version is hex **FF3366**. The color can be described as dark washed rose. A complement of this color would be **78.1265, -47.7267, 11.1942**, and the grayscale version is **40.3019, -2.1504, 2.1897**.

A 20% lighter version of the original color is **60.0743, 51.9572, 10.6837**, and **29.0766, 50.6166, 12.4166** is the 20% darker color. If you saturate the color by 10%, you get **42.9288, 68.6607, 17.3008**, and if you desaturate by 10%, it is **48.4763, 56.6485, 11.2155**.

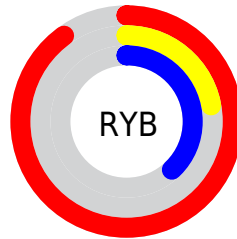
Distribution



Red (90%)

Green (22%)

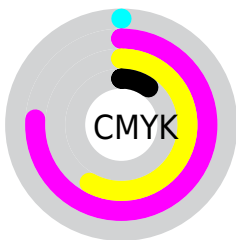
Blue (38%)



Red (90%)

Yellow (22%)

Blue (38%)

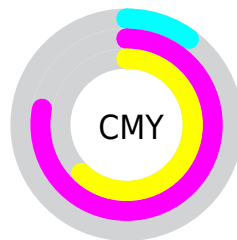


Cyan (0%)

Magenta (76%)

Yellow (58%)

Black (10%)



Cyan (10%)

Magenta (78%)

Yellow (62%)

Brightness & Saturation Gradients

These gradients show how the HunterLab color 45.1868, 63.7531, 14.1210 changes by changing the brightness by 10 percent. The first figure shows a shift by +10% for each color and the second figure -10%.

Similar to the brightness gradients but the following saturation gradients show a change of the HunterLab color 45.1868, 63.7531, 14.1210 by changing the saturation by 10% instead.

■ 45.1868, 63.7531,
14.1210

■ 45.1868, 63.7531,
14.1210

159.4296, 80.4709,
28.1481

■ 35.6377, 61.4829,
12.4137

■ 66.4226, 68.1048,
17.3764

■ 26.8749, 59.2462,
10.6184

■ 78.0188, 70.1503,
18.9526

■ 18.9782, 57.2299,
8.6926

■ 90.2207, 72.0995,
20.5077

■ 12.0555, 55.9745,
7.4781

■ 102.9998, 73.9529,
22.0483

■ 5.0553, 76.0447,
3.5387

■ 116.3311, 75.7130,
23.5792

0.0000, INF, NaN

0.0000, NaN, NaN

130.1925, 77.3835,

25.1042

0.0000, NaN, NaN

144.5645, 78.9681,
26.6264

0.0000, NaN, NaN

■ 45.1868, 63.7531,
14.1210

■ 45.1868, 63.7531,
14.1210

■ 42.9288, 68.6607,
17.3008

■ 48.4763, 56.6485,
11.2155

■ 41.6735, 70.9960,
20.4302


■ 52.7236, 48.0669,
8.7959

■ 41.3528, 71.4894,
21.5169


■ 57.8150, 38.6929,
6.9525


■ 63.6253, 29.0339,
5.6794

■ 70.0394, 19.3982,
4.9204

 76.9595, 9.9432,
4.6017

 84.3062, 0.7313,
4.6509

 92.0159, -8.2281,
5.0041

 97.7343, -13.3535,
2.9380

Harmonies

Analogous

The Analogous color harmony consists of three colors that are next to each other on the color wheel.



45.1881, 63.8934, -13.0351



45.1868, 63.7531, 14.1210



45.1881, 43.1748, 26.0448

Triad

The Triadic color harmony groups three colors that are evenly spaced from another and form a triangle on the color wheel.



45.1881, 63.7486, 14.1220



45.1881, -35.1532, 25.9619



45.1881, -15.6118, -82.8235

Complementary

The Complementary color scheme is a pair of colors which are on the opposite of each other on the color wheel.



45.1868, 63.7531, 14.1210



78.1265, -47.7267, 11.1942

Split Complementary

Split-complementary colors differ from the complementary color scheme. The scheme consists of three colors, the original color and two neighbors of the complement color.



45.1881, -34.9727, -52.5307



45.1868, 63.7531, 14.1210



45.1881, -44.1993, 13.8794

Square

The Square scheme is like the rectangle color scheme, but the four colors are evenly spaced on the color wheel.



45.1881, 63.7486, 14.1220



45.1881, -15.9259, 29.4108



45.1881, -44.1427, -13.4875



45.1881, 12.9006, -82.5974

Rectangle

The Rectangle color scheme consists of four colors that form a rectangle on the color wheel.



45.1868, 63.7531, 14.1210



45.1881, 23.0183, 28.8281



45.1881, -44.1427, -13.4875



45.1881, -23.2271, -75.3165

Sweetspot

The Sweet Spot groups the original color and five complimentary colors.



45.1881, 63.7486, 14.1220



80.9767, 18.6446, 5.3779



43.4944, 71.4677, -73.9978



36.1903, 10.4284, 2.5783

0.0000, NaN, NaN



46.2646, -2.4686, 2.5136

Same Dimension

The Same Dimension uses a secret algorithm to generate beautiful new colors.



45.1881, 63.7486, 14.1220



47.3603, 78.9718, 21.3936



50.9678, 43.0571, 27.9533



37.9795, 1.7694, 2.1349



31.1407, 53.8854, 15.8117



8.5495, 14.9586, 3.0648

Inverse Universe

The Inverse Universe completely reimagines the original color for something new.



45.1881, 63.7486, 14.1220



47.3603, 78.9718, 21.3936



64.6145, -20.6092, -29.2394



37.9795, 1.7694, 2.1349



31.1407, 53.8854, 15.8117



8.5495, 14.9586, 3.0648

Previews

White Background



This preview shows how the HunterLab color 45.1868, 63.7531, 14.1210 looks on a white background.

Color Contrast Check

Large Text (above 18pt) WCAG AA ✓ Pass

Any Text WCAG AA × Fail

Large Text (above 18pt) WCAG AAA × Fail

Any Text WCAG AAA × Fail

Black Background



This preview shows how the HunterLab color 45.1868, 63.7531, 14.1210 looks on a black background.

Color Contrast Check

Large Text (above 18pt) WCAG AA ✓ Pass

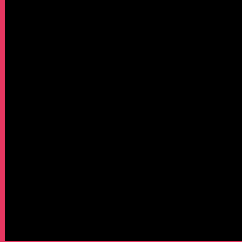
Any Text WCAG AA ✓ Pass

Large Text (above 18pt) WCAG AAA ✓ Pass

Any Text WCAG AAA × Fail

If you want to check with other color combinations, try the [Color Contrast Checker](#).

HunterLab 45.1868, 63.7531, 14.1210 Background



This preview shows how black text looks on a background with the HunterLab color 45.1868, 63.7531, 14.1210.



This preview shows how white text looks on a background with the HunterLab color 45.1868, 63.7531,

Color Blindness Simulation

Color vision deficiency is a very complex topic, and I could not describe the different causes any better than Wikipedia does, so if you want to learn more, you should check out their [article about color blindness](#).

Dichromacy



Original Color

45.1868, 63.7531, 14.1210

Protanopia

45.5132, -1.3387, 0.5098

Deuteranopia

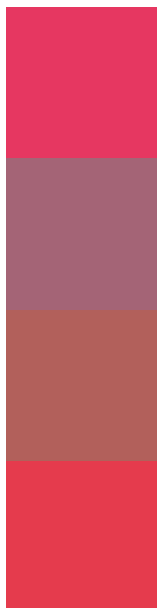
45.3068, 2.9460, 15.8875



Tritanopia

45.2603, 58.7895, 22.3671

Trichromacy



Original Color

45.1868, 63.7531, 14.1210

Protanomaly

42.7959, 21.6109, 3.0036

Deuteranomaly

43.1115, 25.7107, 13.4035

Tritanomaly

45.0797, 60.5563, 19.6036

Monochromacy



Original Color

45.1868, 63.7531, 14.1210

Achromatopsia

40.2529, -2.1478, 2.1870

Achromatomaly

39.3856, 21.3208, 3.7029

CSS Examples

Text

The CSS property to change the color of the text to HunterLab 45.1868, 63.7531, 14.1210 is called "color". The color property can be set on classes, ids or directly on the HTML element.

This example shows how text in the color `rgb(230, 55, 97)` looks like.

```
.text, #text, p{  
    color:rgb(230, 55, 97)  
}
```

If you want to add a text shadow in that color use the text-shadow property, you can generate a text shadow directly with our [CSS Text Shadow Generator](#).

Here you see how black text with a 4 pixel rgb(230, 55, 97) colored shadow looks like.

```
.shadow{ text-shadow: 4px 4px 2px rgb(230, 55, 97) }
```

Border

The CSS property to change the border of an element to HunterLab 45.1868, 63.7531, 14.1210 is called "border". The border property can be set on classes, ids or directly on the HTML element.

This example shows the color as border, it can be applied via the CSS property "border" or "border-color".

```
.border, #border, table{ border:4px solid rgb(230, 55, 97) }
```


If only the border color should be changed use the property `border-color`.

```
.border{ border-color:rgb(230, 55, 97) }
```

If you want to add a box shadow in that color use:

Here you see how a box with a 4 pixel `rgb(230, 55, 97)` colored shadow looks like.

```
.boxshadow{ -moz-box-shadow:4px 4px 4px  
4px rgb(230, 55, 97); -webkit-box-  
shadow:4px 4px 4px 4px rgb(230, 55, 97);  
box-shadow:4px 4px 4px 4px rgb(230, 55,  
97) }
```

Background

The CSS property to change the background color of an element to HunterLab 45.1868, 63.7531, 14.1210 is called "background". The background property can be set on classes, ids or directly on the HTML element.

```
.background, #background, body{  
background: rgb(230, 55, 97) }
```

If only the background color should be changed can be used:

```
.background{ background-color: rgb(230, 55,  
97) }
```

This example shows the color as background, it is applied via the CSS property "background".

To optimize and compress your CSS code, you can use our [online CSS compressor and optimizer](#) based on csstidy. If you want to create a linear or radial gradient as background or border, check our [CSS Gradient Generator](#).

Hey! You found this booklet interesting? Support Converting Colors with the new Membership Option!

The pro membership hides all ads, plus gives you double the colors in the color bucket, and more awesome pro features!

[Learn more, Memberships starting at \\$2.50/m!](#)

**Follow me
on Twitter!**

@ConvertingColor