

Converting Colors

HunterLab(45.1101, 54.8974,
11.8309)

Have a look what the booklet for
HunterLab(45.1101, 54.8974,
11.8309) contains.

HunterLab(45.0506, 55.0434, 11.8358)	3
<i>Conversions</i>	4
<i>Details</i>	6
<i>Harmonies</i>	12
<i>Previews</i>	24
<i>Color Blindness Simulation</i>	28
<i>CSS Examples</i>	31

Color

**HunterLab(45.0506, 55.0434,
11.8358)**

Conversions

Conversions Part 1

Format	Color
Hex	DB4567
RGB	219, 69, 103
RGB Percent	86%, 27%, 40%
CMY	0.1412, 0.7294, 0.5961
CMYK	0.00, 0.68, 0.53, 0.14
HSL	346°, 68%, 56%
HSV	346°, 68%, 86%
XYZ	33.7897, 20.2956, 14.9685
YIQ	117.7260, 78.4860, 42.3740

Conversions

Conversions Part 2

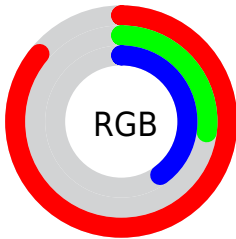
Format	Color
R_{YB}	219, 69, 103
Decimal	14370151
CIE _{Lab}	52.17, 60.36, 14.31
CIE _{LCh}	52, 62.038, 13.340
Yxy	20.2967, 0.4893, 0.2939
Android (android.graphics.Color)	4292560231 (0xFFDB4567)
YUV	117.7260, -7.2599, 88.8173
Hunter-Lab	45.0506, 55.0434, 11.8358

Details

The HunterLab color **45.0506, 55.0434, 11.8358** is a dark color, and the websafe version is hex **CC3366**. The color can be described as dark muted rose. A complement of this color would be **74.4524, -42.6766, 8.5747**, and the grayscale version is **42.4650, -2.2658, 2.3072**.

A 20% lighter version of the original color is **62.0603, 48.2459, 9.8787**, and **27.5037, 48.1749, 9.4465** is the 20% darker color. If you saturate the color by 10%, you get **42.1601, 61.3498, 14.6528**, and if you desaturate by 10%, it is **48.8685, 47.1925, 9.4041**.

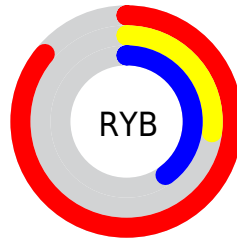
Distribution



Red (86%)

Green (27%)

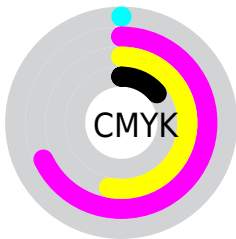
Blue (40%)



Red (86%)

Yellow (27%)

Blue (40%)

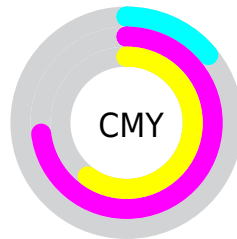


Cyan (0%)

Magenta (68%)

Yellow (53%)

Black (14%)



Cyan (14%)

Magenta (73%)

Yellow (60%)

Brightness & Saturation Gradients

These gradients show how the HunterLab color 45.0506, 55.0434, 11.8358 changes by changing the brightness by 10 percent. The first figure shows a shift by +10% for each color and the second figure -10%.

Similar to the brightness gradients but the following saturation gradients show a change of the HunterLab color 45.0506, 55.0434, 11.8358 by changing the saturation by 10% instead.

45.0506, 55.0434,
11.8358

45.0506, 55.0434,
11.8358

159.2221, 69.7892,
24.0181

35.5118, 52.9339,
10.4145

66.2677, 58.9923,
14.5897

26.7604, 50.7959,
8.9380

77.8553, 60.8177,
15.9415

18.8762, 48.7544,
7.3748

90.0491, 62.5420,
17.2859

11.9679, 47.1904,
6.0672

102.8205, 64.1686,
18.6273

4.9025, 65.2719,
3.4318

116.1443, 65.7020,
19.9689

0.0000, INF, NaN

0.0000, NaN, NaN

129.9986, 67.1468,

21.3134

0.0000, NaN, NaN

144.3637, 68.5078,
22.6626

0.0000, NaN, NaN

■ 45.0506, 55.0434,
11.8358

■ 45.0506, 55.0434,
11.8358

■ 42.1601, 61.3498,
14.6528

■ 48.8685, 47.1925,
9.4041

■ 40.2436, 65.4925,
17.6193

■ 53.5073, 38.4793,
7.4723

■ 39.2193, 67.3299,
20.4001


■ 58.8505, 29.4185,
6.0612


■ 39.0987, 67.5386,
20.7621


■ 64.7863, 20.3371,
5.1326

■ 71.2188, 11.4085,
4.6243

 78.0692, 2.7059,
4.4703

 85.2745, -5.7541,
4.6109

 92.7845, -13.9841,
4.9953

 96.8504, -16.4722,
1.4733

Harmonies

Analogous

The Analogous color harmony consists of three colors that are next to each other on the color wheel.



45.0519, 53.9875, -12.8492



45.0506, 55.0434, 11.8358



45.0519, 38.4868, 23.9925

Triad

The Triadic color harmony groups three colors that are evenly spaced from another and form a triangle on the color wheel.



45.0519, 55.0394, 11.8368



45.0519, -31.0510, 24.7340



45.0519, -15.4623, -67.7384

Complementary

The Complementary color scheme is a pair of colors which are on the opposite of each other on the color wheel.



45.0506, 55.0434, 11.8358



74.4524, -42.6766, 8.5747

Split Complementary

Split-complementary colors differ from the complementary color scheme. The scheme consists of three colors, the original color and two neighbors of the complement color.



45.0519, -32.4863, -41.9883



45.0506, 55.0434, 11.8358



45.0519, -40.0378, 13.7581

Square

The Square scheme is like the rectangle color scheme, but the four colors are evenly spaced on the color wheel.



45.0519, 55.0394, 11.8368



45.0519, -13.0413, 28.1890



45.0519, -40.4979, -9.5204



45.0519, 9.3171, -69.3118

Rectangle

The Rectangle color scheme consists of four colors that form a rectangle on the color wheel.



45.0506, 55.0434, 11.8358



45.0519, 21.4386, 27.2480



45.0519, -40.4979, -9.5204



45.0519, -22.1356, -61.1717

Sweetspot

The Sweet Spot groups the original color and five complimentary colors.



45.0519, 55.0394, 11.8368



82.5090, 16.3855, 5.6123



44.2295, 62.5689, -61.4883



37.1809, 8.9450, 2.6685

0.0000, NaN, NaN



46.2646, -2.4686, 2.5136

Same Dimension

The Same Dimension uses a secret algorithm to generate beautiful new colors.



45.0519, 55.0394, 11.8368



48.9914, 75.3133, 18.8933



51.4087, 34.1898, 25.7812



36.1934, 1.6449, 2.0907



30.1303, 52.0918, 15.6502



7.7545, 13.5738, 2.7317

Inverse Universe

The Inverse Universe completely reimagines the original color for something new.



45.0519, 55.0394, 11.8368



48.9914, 75.3133, 18.8933



62.1459, -18.6762, -25.9708



36.1934, 1.6449, 2.0907



30.1303, 52.0918, 15.6502



7.7545, 13.5738, 2.7317

Previews

White Background



This preview shows how the HunterLab color 45.0506, 55.0434, 11.8358 looks on a white background.

Color Contrast Check

Large Text (above 18pt) WCAG AA ✓ Pass

Any Text WCAG AA × Fail

Large Text (above 18pt) WCAG AAA × Fail

Any Text WCAG AAA × Fail

Black Background



This preview shows how the HunterLab color 45.0506, 55.0434, 11.8358 looks on a black background.

Color Contrast Check

Large Text (above 18pt) WCAG AA ✓ Pass

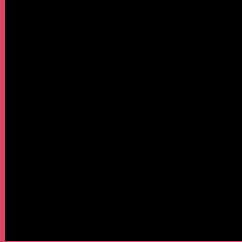
Any Text WCAG AA ✓ Pass

Large Text (above 18pt) WCAG AAA ✓ Pass

Any Text WCAG AAA × Fail

If you want to check with other color combinations, try the [Color Contrast Checker](#).

HunterLab 45.0506, 55.0434, 11.8358 Background



This preview shows how black text looks on a background with the HunterLab color 45.0506, 55.0434, 11.8358.



This preview shows how white text looks on a background with the HunterLab color 45.0506, 55.0434,

Color Blindness Simulation

Color vision deficiency is a very complex topic, and I could not describe the different causes any better than Wikipedia does, so if you want to learn more, you should check out their [article about color blindness](#).

Dichromacy



Original Color

45.0506, 55.0434, 11.8358

Protanopia

45.1818, -0.9950, -0.3543

Deuteranopia

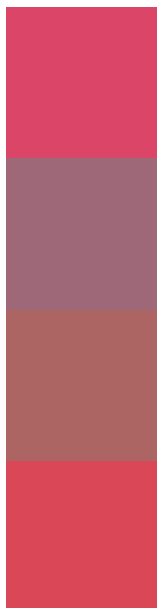
45.2554, 3.0824, 13.4419



Tritanopia

45.1143, 50.5790, 19.2122

Trichromacy



Original Color

45.0506, 55.0434, 11.8358

Protanomaly

43.1880, 18.2405, 2.0981

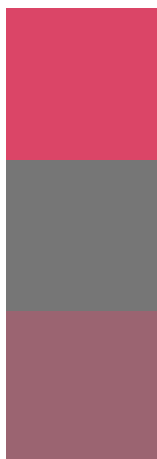
Deuteranomaly

43.6949, 22.1468, 11.2948

Tritanomaly

44.9759, 52.0685, 16.7389

Monochromacy



Original Color

45.0506, 55.0434, 11.8358

Achromatopsia

42.5634, -2.2711, 2.3126

Achromatomaly

41.5634, 17.6894, 3.6350

CSS Examples

Text

The CSS property to change the color of the text to HunterLab 45.0506, 55.0434, 11.8358 is called "color". The color property can be set on classes, ids or directly on the HTML element.

This example shows how text in the color `rgb(219, 69, 103)` looks like.

```
.text, #text, p{  
    color:rgb(219, 69, 103)  
}
```

If you want to add a text shadow in that color use the text-shadow property, you can generate a text shadow directly with our [CSS Text Shadow Generator](#).

Here you see how black text with a 4 pixel rgb(219, 69, 103) colored shadow looks like.

```
.shadow{ text-shadow: 4px 4px 2px rgb(219, 69, 103) }
```

Border

The CSS property to change the border of an element to HunterLab 45.0506, 55.0434, 11.8358 is called "border". The border property can be set on classes, ids or directly on the HTML element.

This example shows the color as border, it can be applied via the CSS property "border" or "border-color".

```
.border, #border, table{ border:4px solid rgb(219, 69, 103) }
```


If only the border color should be changed use the property `border-color`.

```
.border{ border-color:rgb(219, 69, 103) }
```

If you want to add a box shadow in that color use:

Here you see how a box with a 4 pixel `rgb(219, 69, 103)` colored shadow looks like.

```
.boxshadow{ -moz-box-shadow:4px 4px 4px  
4px rgb(219, 69, 103); -webkit-box-  
shadow:4px 4px 4px 4px rgb(219, 69, 103);  
box-shadow:4px 4px 4px 4px rgb(219, 69,  
103) }
```

Background

The CSS property to change the background color of an element to HunterLab 45.0506, 55.0434, 11.8358 is called "background". The background property can be set on classes, ids or directly on the HTML element.

```
.background, #background, body{  
background: rgb(219, 69, 103) }
```

If only the background color should be changed can be used:

```
.background{ background-color: rgb(219, 69,  
103) }
```

This example shows the color as background, it is applied via the CSS property "background".

To optimize and compress your CSS code, you can use our [online CSS compressor and optimizer](#) based on csstidy. If you want to create a linear or radial gradient as background or border, check our [CSS Gradient Generator](#).

Hey! You found this booklet interesting? Support Converting Colors with the new Membership Option!

The pro membership hides all ads, plus gives you double the colors in the color bucket, and more awesome pro features!

[Learn more, Memberships starting at \\$2.50/m!](#)

**Follow me
on Twitter!**

@ConvertingColor