

Converting Colors

HunterLab(45.3224, 8.6416,
15.5918)

Have a look what the booklet for
HunterLab(45.3224, 8.6416,
15.5918) contains.

HunterLab(45.3685, 8.5269, 15.7538)	3
<i>Conversions</i>	4
<i>Details</i>	6
<i>Harmonies</i>	12
<i>Previews</i>	24
<i>Color Blindness Simulation</i>	28
<i>CSS Examples</i>	31

Color

**HunterLab(45.3685, 8.5269,
15.7538)**

Conversions

Conversions Part 1

Format	Color
Hex	9F7459
RGB	159, 116, 89
RGB Percent	62%, 45%, 35%
CMY	0.3765, 0.5451, 0.6510
CMYK	0.00, 0.27, 0.44, 0.38
HSL	23°, 28%, 49%
HSV	23°, 44%, 62%
XYZ	22.3467, 20.5830, 12.2463
YIQ	125.7790, 34.2950, 0.7190

Conversions

Conversions Part 2

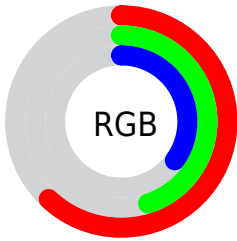
Format	Color
R_{YB}	159, 133, 89
Decimal	10450009
CIE _{Lab}	52.49, 13.38, 21.55
CIE _{LCh}	52, 25.363, 58.158
Yxy	20.5840, 0.4050, 0.3730
Android (android.graphics.Color)	4288640089 (0xFF9F7459)
YUV	125.7790, -18.1320, 29.1348
Hunter-Lab	45.3685, 8.5269, 15.7538

Details

The HunterLab color $45.3685, 8.5269, 15.7538$ is a dark color, and the websafe version is hex 996666 . A complement of this color would be $45.9660, -8.0994, -14.1265$, and the grayscale version is $45.6504, -2.4358, 2.4803$.

A 20% lighter version of the original color is $66.5706, 8.6868, 19.4178$, and $27.0406, 7.6595, 11.7851$ is the 20% darker color. If you saturate the color by 10%, you get $42.6738, 11.8342, 17.7204$, and if you desaturate by 10%, it is $48.2203, 5.4724, 13.4090$.

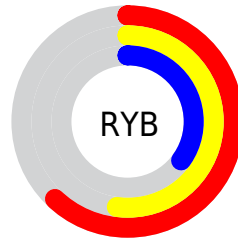
Distribution



Red (62%)

Green (45%)

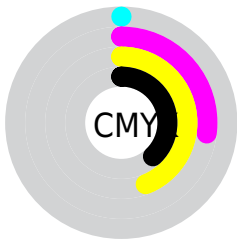
Blue (35%)



Red (62%)

Yellow (52%)

Blue (35%)

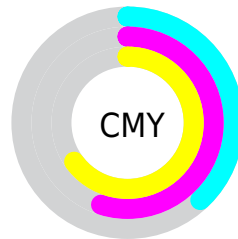


Cyan (0%)

Magenta (27%)

Yellow (44%)

Black (38%)



Cyan (38%)

Magenta (55%)

Yellow (65%)

Brightness & Saturation Gradients

These gradients show how the HunterLab color 45.3685, 8.5269, 15.7538 changes by changing the brightness by 10 percent. The first figure shows a shift by +10% for each color and the second figure -10%.

Similar to the brightness gradients but the following saturation gradients show a change of the HunterLab color 45.3685, 8.5269, 15.7538 by changing the saturation by 10% instead.

■ 45.3685, 8.5269,
15.7538

■ 45.3685, 8.5269,
15.7538

159.7058, 7.7056,
31.2088

■ 35.8054, 8.2824,
13.8246

■ 66.6289, 8.7605,
19.3976

■ 27.0276, 7.9391,
11.7831

■ 78.2364, 8.7723,
21.1477

■ 19.1141, 7.4753,
9.5793

■ 90.4492, 8.7225,
22.8661

■ 12.1725, 6.8627,
8.5207

■ 103.2386, 8.6165,
24.5608

■ 5.2515, 10.8224,
3.6761

■ 116.5797, 8.4584,
26.2382

0.0000, NaN, NaN

130.4506, 8.2519,

0.0000, NaN, NaN

27.9029

0.0000, NaN, NaN

144.8318, 8.0001,
29.5587

0.0000, NaN, NaN

■ 45.3685, 8.5269,
15.7538

■ 45.3685, 8.5269,
15.7538

■ 42.6738, 11.8342,
17.7204

■ 48.2203, 5.4724,
13.4090

■ 40.1503, 15.3972,
19.2549

■ 51.2101, 2.6688,
10.7328

■ 37.8179, 19.1938,
20.3069

■ 54.3250, 0.0998,
7.7692

■ 35.6961, 23.1788,
20.8360

■ 57.5530, -2.2522,
4.5556

■ 33.8033, 27.2739,
20.8284

■ 60.8834, -4.4059,
1.1239

■ 32.7788, 29.6841,
20.7178

■ 64.3069, -6.3796,
-2.4992

■ 67.8155, -8.1910,
-6.2913

■ 71.4022, -9.8561,
-10.2334

■ 75.0610, -11.3899,
-14.3100

Harmonies

Analogous

The Analogous color harmony consists of three colors that are next to each other on the color wheel.



45.3696, 16.4260, 10.5033



45.3685, 8.5269, 15.7538



45.3696, -1.7838, 17.5726

Triad

The Triadic color harmony groups three colors that are evenly spaced from another and form a triangle on the color wheel.



45.3696, 8.5249, 15.7544



45.3696, -20.5980, 3.0720



45.3696, 7.3236, -17.5187

Complementary

The Complementary color scheme is a pair of colors which are on the opposite of each other on the color wheel.



45.3685, 8.5269, 15.7538



45.9660, -8.0994, -14.1265

Split Complementary

Split-complementary colors differ from the complementary color scheme. The scheme consists of three colors, the original color and two neighbors of the complement color.



45.3696, -3.0591, -20.7319



45.3685, 8.5269, 15.7538



45.3696, -18.6228, -7.3695

Square

The Square scheme is like the rectangle color scheme, but the four colors are evenly spaced on the color wheel.



45.3696, 8.5249, 15.7544



45.3696, -18.0765, 11.3405



45.3696, -12.4226, -16.6656



45.3696, 15.6900, -8.6578

Rectangle

The Rectangle color scheme consists of four colors that form a rectangle on the color wheel.



45.3685, 8.5269, 15.7538



45.3696, -8.4418, 16.9912



45.3696, -12.4226, -16.6656



45.3696, 3.9264, -19.3715

Sweetspot

The Sweet Spot groups the original color and five complimentary colors.



45.3696, 8.5249, 15.7544



73.0310, -0.1212, 10.0743



40.2323, 27.4094, -6.9880



34.2522, 0.2719, 5.1963



89.8524, -4.7943, 4.8819



37.4146, -1.9963, 2.0328

Same Dimension

The Same Dimension uses a secret algorithm to generate beautiful new colors.



45.3696, 8.5249, 15.7544



57.1140, 15.8294, 23.7104



54.9289, -7.9264, 23.5063



26.5420, -0.4994, 2.9754



29.2618, 26.0404, 18.4868



4.8189, 1.4193, 2.9943

Inverse Universe

The Inverse Universe completely reimagines the original color for something new.



45.9660, -8.0994, -14.1265



58.0467, -10.9323, -24.4250



36.3421, 8.4461, -30.9709



26.6069, -2.2388, -0.1490



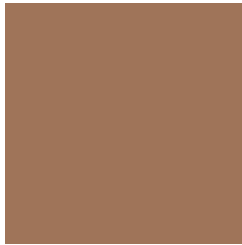
29.8487, -1.9483, -33.1024



4.8924, -1.6157, -2.6273

Previews

White Background



This preview shows how the HunterLab color 45.3685, 8.5269, 15.7538 looks on a white background.

Color Contrast Check

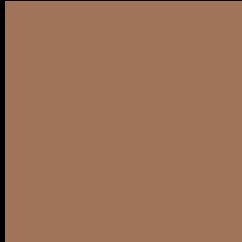
Large Text (above 18pt) WCAG AA ✓ Pass

Any Text WCAG AA × Fail

Large Text (above 18pt) WCAG AAA × Fail

Any Text WCAG AAA × Fail

Black Background



This preview shows how the HunterLab color 45.3685, 8.5269, 15.7538 looks on a black background.

Color Contrast Check

Large Text (above 18pt) WCAG AA ✓ Pass

Any Text WCAG AA ✓ Pass

Large Text (above 18pt) WCAG AAA ✓ Pass

Any Text WCAG AAA × Fail

If you want to check with other color combinations, try the [Color Contrast Checker](#).

HunterLab 45.3685, 8.5269, 15.7538 Background



This preview shows how black text looks on a background with the HunterLab color 45.3685, 8.5269, 15.7538.



This preview shows how white text looks on a background with the HunterLab color 45.3685, 8.5269,

Color Blindness Simulation

Color vision deficiency is a very complex topic, and I could not describe the different causes any better than Wikipedia does, so if you want to learn more, you should check out their [article about color blindness](#).

Dichromacy



Original Color

45.3685, 8.5269, 15.7538

Protanopia

45.3965, -3.5517, 14.3856

Deuteranopia

45.3068, 2.9460, 15.8875



Tritanopia

45.4156, 15.1840, 5.0529

Trichromacy



Original Color

45.3685, 8.5269, 15.7538

Protanomaly

45.4104, 0.6925, 14.7739

Deuteranomaly

45.4649, 4.8288, 16.0598

Tritanomaly

45.2675, 12.9091, 9.1699

Monochromacy



Original Color

45.3685, 8.5269, 15.7538

Achromatopsia

45.6768, -2.4372, 2.4817

Achromatomaly

45.2930, 1.2180, 7.4800

CSS Examples

Text

The CSS property to change the color of the text to HunterLab 45.3685, 8.5269, 15.7538 is called "color". The color property can be set on classes, ids or directly on the HTML element.

This example shows how text in the color `rgb(159, 116, 89)` looks like.

```
.text, #text, p{  
    color:rgb(159, 116, 89)  
}
```

If you want to add a text shadow in that color use the text-shadow property, you can generate a text shadow directly with our [CSS Text Shadow Generator](#).

Here you see how black text with a 4 pixel rgb(159, 116, 89) colored shadow looks like.

```
.shadow{ text-shadow: 4px 4px 2px rgb(159, 116, 89) }
```

Border

The CSS property to change the border of an element to HunterLab 45.3685, 8.5269, 15.7538 is called "border". The border property can be set on classes, ids or directly on the HTML element.

This example shows the color as border, it can be applied via the CSS property "border" or "border-color".

```
.border, #border, table{ border:4px solid rgb(159, 116, 89) }
```


If only the border color should be changed use the property `border-color`.

```
.border{ border-color:rgb(159, 116, 89) }
```

If you want to add a box shadow in that color use:

Here you see how a box with a 4 pixel `rgb(159, 116, 89)` colored shadow looks like.

```
.boxshadow{ -moz-box-shadow:4px 4px 4px  
4px rgb(159, 116, 89); -webkit-box-  
shadow:4px 4px 4px 4px rgb(159, 116, 89);  
box-shadow:4px 4px 4px 4px rgb(159, 116,  
89) }
```

Background

The CSS property to change the background color of an element to HunterLab 45.3685, 8.5269, 15.7538 is called "background". The background property can be set on classes, ids or directly on the HTML element.

```
.background, #background, body{  
background: rgb(159, 116, 89) }
```

If only the background color should be changed can be used:

```
.background{ background-color: rgb(159,  
116, 89) }
```

This example shows the color as background, it is applied via the CSS property "background".

To optimize and compress your CSS code, you can use our [online CSS compressor and optimizer](#) based on csstidy. If you want to create a linear or radial gradient as background or border, check our [CSS Gradient Generator](#).

Hey! You found this booklet interesting? Support Converting Colors with the new Membership Option!

The pro membership hides all ads, plus gives you double the colors in the color bucket, and more awesome pro features!

[Learn more, Memberships starting at \\$2.50/m!](#)

**Follow me
on Twitter!**

@ConvertingColor