

Converting Colors

HunterLab(45.5773, 11.3299,
19.3895)

Have a look what the booklet for
HunterLab(45.5773, 11.3299,
19.3895) contains.

HunterLab(45.5762, 11.3326, 19.3874)	3
<i>Conversions</i>	4
<i>Details</i>	6
<i>Harmonies</i>	12
<i>Previews</i>	24
<i>Color Blindness Simulation</i>	28
<i>CSS Examples</i>	31

Color

**HunterLab(45.5762, 11.3326,
19.3874)**

Conversions

Conversions Part 1

Format	Color
Hex	A7724C
RGB	167, 114, 76
RGB Percent	65%, 45%, 30%
CMY	0.3451, 0.5529, 0.7020
CMYK	0.00, 0.32, 0.54, 0.35
HSL	25°, 37%, 48%
HSV	25°, 54%, 65%
XYZ	23.2581, 20.7719, 9.6210
YIQ	125.5150, 43.7860, -0.5820

Conversions

Conversions Part 2

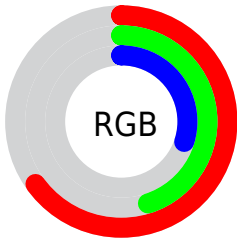
Format	Color
R_{YB}	167, 141, 76
Decimal	10973772
CIE Lab	52.70, 16.62, 29.37
CIE LCh	53, 33.744, 60.492
Yxy	20.7729, 0.4335, 0.3872
Android (android.graphics.Color)	4289163852 (0xFFA7724C)
YUV	125.5150, -24.4109, 36.3823
Hunter-Lab	45.5762, 11.3326, 19.3874

Details

The HunterLab color **45.5762, 11.3326, 19.3874** is a dark color, and the websafe version is hex **996633**. A complement of this color would be **44.7505, -7.2917, -20.9897**, and the grayscale version is **45.5683, -2.4314, 2.4758**.

A 20% lighter version of the original color is **66.9226, 12.1234, 23.9622**, and **27.2670, 10.3139, 14.3116** is the 20% darker color. If you saturate the color by 10%, you get **43.0014, 14.8744, 20.9961**, and if you desaturate by 10%, it is **48.3200, 8.0616, 17.2937**.

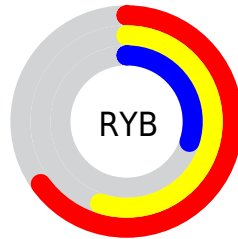
Distribution



Red (65%)

Green (45%)

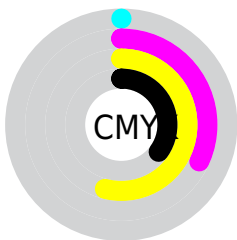
Blue (30%)



Red (65%)

Yellow (55%)

Blue (30%)

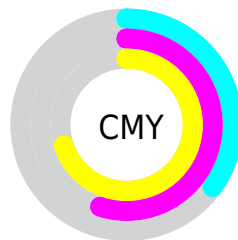


Cyan (0%)

Magenta (32%)

Yellow (54%)

Black (35%)



Cyan (35%)

Magenta (55%)

Yellow (70%)

Brightness & Saturation Gradients

These gradients show how the HunterLab color 45.5762, 11.3326, 19.3874 changes by changing the brightness by 10 percent. The first figure shows a shift by +10% for each color and the second figure -10%.

Similar to the brightness gradients but the following saturation gradients show a change of the HunterLab color 45.5762, 11.3326, 19.3874 by changing the saturation by 10% instead.

■ 45.5762, 11.3326,
19.3874

■ 45.5762, 11.3326,
19.3874

160.0216, 11.7270,
38.5300

■ 35.9974, 10.9206,
16.8865

■ 66.8650, 11.8757,
24.0370

■ 27.2024, 10.4003,
14.2133

■ 78.4855, 12.0319,
26.2369

■ 19.2700, 9.7491,
11.3870

■ 90.7105, 12.1207,
28.3773

■ 12.3066, 8.9395,
8.6146

■ 103.5117, 12.1478,
30.4703

■ 5.4673, 12.9545,
3.8271

■ 116.8641, 12.1183,
32.5254

0.0000, NaN, NaN

0.0000, NaN, NaN

130.7459, 12.0361,

34.5499

0.0000, NaN, NaN

145.1376, 11.9046,
36.5499

0.0000, NaN, NaN

■ 45.5762, 11.3326,
19.3874

■ 45.5762, 11.3326,
19.3874

■ 43.0014, 14.8744,
20.9961

■ 48.3200, 8.0616,
17.2937

■ 40.6093, 18.6782,
22.0691

■ 51.2136, 5.0685,
14.7654

■ 38.4181, 22.7038,
22.5712

■ 54.2438, 2.3413,
11.8534

■ 36.4440, 26.8822,
22.4974

■ 57.3974, -0.1353,
8.6038

■ 35.4454, 29.1732,
22.3520

■ 60.6632, -2.3796,
5.0571

■ 64.0309, -4.4108,
1.2486

■ 67.4919, -6.2479,
-2.7912

■ 71.0383, -7.9091,
-7.0368

■ 74.6634, -9.4110,
-11.4661

Harmonies

Analogous

The Analogous color harmony consists of three colors that are next to each other on the color wheel.



45.5773, 22.6541, 13.4849



45.5762, 11.3326, 19.3874



45.5773, -2.6610, 21.1433

Triad

The Triadic color harmony groups three colors that are evenly spaced from another and form a triangle on the color wheel.



45.5773, 11.3303, 19.3880



45.5773, -25.9701, 2.2646



45.5773, 11.7693, -24.9422

Complementary

The Complementary color scheme is a pair of colors which are on the opposite of each other on the color wheel.



45.5762, 11.3326, 19.3874



44.7505, -7.2917, -20.9897

Split Complementary

Split-complementary colors differ from the complementary color scheme. The scheme consists of three colors, the original color and two neighbors of the complement color.



45.5773, -2.2072, -30.5078



45.5762, 11.3326, 19.3874



45.5773, -23.0494, -12.2120

Square

The Square scheme is like the rectangle color scheme, but the four colors are evenly spaced on the color wheel.



45.5773, 11.3303, 19.3880



45.5773, -23.2337, 13.2100



45.5773, -14.7374, -25.2777



45.5773, 22.9280, -11.7241

Rectangle

The Rectangle color scheme consists of four colors that form a rectangle on the color wheel.



45.5762, 11.3326, 19.3874



45.5773, -11.3240, 20.3093



45.5773, -14.7374, -25.2777



45.5773, 7.1937, -27.9191

Sweetspot

The Sweet Spot groups the original color and five complimentary colors.



45.5773, 11.3303, 19.3880



76.0419, 0.3917, 12.3275



38.6933, 36.0322, -7.3956



35.5753, 0.4875, 6.2457



92.0917, -4.9138, 5.0035



39.3538, -2.0998, 2.1382

Same Dimension

The Same Dimension uses a secret algorithm to generate beautiful new colors.



45.5773, 11.3303, 19.3880



56.9894, 20.7410, 28.3923



58.0319, -10.1689, 28.5950



28.3511, -0.6382, 3.2604



31.1553, 25.1429, 19.6379



5.8129, 1.7779, 3.6130

Inverse Universe

The Inverse Universe completely reimagines the original color for something new.



44.7505, -7.2917, -20.9897



55.6338, -8.5701, -35.6470



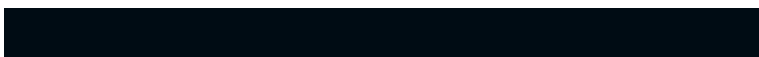
32.5620, 14.7943, -46.2443



28.2824, -2.2790, -0.2602



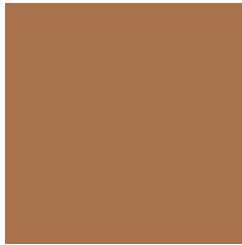
29.6846, 0.2212, -37.5808



5.5857, -1.4698, -3.8087

Previews

White Background



This preview shows how the HunterLab color 45.5762, 11.3326, 19.3874 looks on a white background.

Color Contrast Check

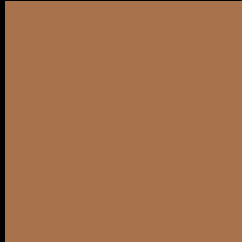
Large Text (above 18pt) WCAG AA ✓ Pass

Any Text WCAG AA × Fail

Large Text (above 18pt) WCAG AAA × Fail

Any Text WCAG AAA × Fail

Black Background



This preview shows how the HunterLab color 45.5762, 11.3326, 19.3874 looks on a black background.

Color Contrast Check

Large Text (above 18pt) WCAG AA ✓ Pass

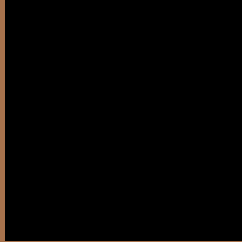
Any Text WCAG AA ✓ Pass

Large Text (above 18pt) WCAG AAA ✓ Pass

Any Text WCAG AAA × Fail

If you want to check with other color combinations, try the [Color Contrast Checker](#).

HunterLab 45.5762, 11.3326, 19.3874 Background



This preview shows how black text looks on a background with the HunterLab color 45.5762, 11.3326, 19.3874.



This preview shows how white text looks on a background with the HunterLab color 45.5762, 11.3326, 19.3874.

Color Blindness Simulation

Color vision deficiency is a very complex topic, and I could not describe the different causes any better than Wikipedia does, so if you want to learn more, you should check out their [article about color blindness](#).

Dichromacy



Original Color

45.5762, 11.3326, 19.3874

Protanopia

45.6444, -4.5483, 17.9345

Deuteranopia

45.5118, 3.2013, 19.4284



Tritanopia

45.5716, 19.1796, 6.5209

Trichromacy



Original Color

45.5762, 11.3326, 19.3874

Protanomaly

45.5845, 0.8283, 18.4823

Deuteranomaly

45.5346, 5.9647, 19.4951

Tritanomaly

45.5667, 16.0173, 12.0022

Monochromacy



Original Color

45.5762, 11.3326, 19.3874

Achromatopsia

45.6768, -2.4372, 2.4817

Achromatomaly

45.4582, 1.5373, 9.5338

CSS Examples

Text

The CSS property to change the color of the text to HunterLab 45.5762, 11.3326, 19.3874 is called "color". The color property can be set on classes, ids or directly on the HTML element.

This example shows how text in the color `rgb(167, 114, 76)` looks like.

```
.text, #text, p{  
    color:rgb(167, 114, 76)  
}
```

If you want to add a text shadow in that color use the text-shadow property, you can generate a text shadow directly with our [CSS Text Shadow Generator](#).

Here you see how black text with a 4 pixel rgb(167, 114, 76) colored shadow looks like.

```
.shadow{ text-shadow: 4px 4px 2px rgb(167, 114, 76) }
```

Border

The CSS property to change the border of an element to HunterLab 45.5762, 11.3326, 19.3874 is called "border". The border property can be set on classes, ids or directly on the HTML element.

This example shows the color as border, it can be applied via the CSS property "border" or "border-color".

```
.border, #border, table{ border:4px solid rgb(167, 114, 76) }
```


If only the border color should be changed use the property border-color.

```
.border{ border-color:rgb(167, 114, 76) }
```

If you want to add a box shadow in that color use:

Here you see how a box with a 4 pixel rgb(167, 114, 76) colored shadow looks like.

```
.boxshadow{ -moz-box-shadow:4px 4px 4px  
4px rgb(167, 114, 76); -webkit-box-  
shadow:4px 4px 4px 4px rgb(167, 114, 76);  
box-shadow:4px 4px 4px 4px rgb(167, 114,  
76) }
```

Background

The CSS property to change the background color of an element to HunterLab 45.5762, 11.3326, 19.3874 is called "background". The background property can be set on classes, ids or directly on the HTML element.

```
.background, #background, body{  
background: rgb(167, 114, 76) }
```

If only the background color should be changed can be used:

```
.background{ background-color: rgb(167,  
114, 76) }
```

This example shows the color as background, it is applied via the CSS property "background".

To optimize and compress your CSS code, you can use our [online CSS compressor and optimizer](#) based on csstidy. If you want to create a linear or radial gradient as background or border, check our [CSS Gradient Generator](#).

Hey! You found this booklet interesting? Support Converting Colors with the new Membership Option!

The pro membership hides all ads, plus gives you double the colors in the color bucket, and more awesome pro features!

[Learn more, Memberships starting at \\$2.50/m!](#)

**Follow me
on Twitter!**

@ConvertingColor