

Converting Colors

HunterLab(45.5960, 45.8802,
-5.4107)

Have a look what the booklet for
HunterLab(45.5960, 45.8802,
-5.4107) contains.

HunterLab(45.5960, 45.8802, -5.4107)	3
<i>Conversions</i>	4
<i>Details</i>	6
<i>Harmonies</i>	12
<i>Previews</i>	24
<i>Color Blindness Simulation</i>	28
<i>CSS Examples</i>	31

Color

**HunterLab(45.5960, 45.8802,
-5.4107)**

Conversions

Conversions Part 1

Format	Color
Hex	C85590
RGB	200, 85, 144
RGB Percent	78%, 33%, 56%
CMY	0.2157, 0.6666, 0.4353
CMYK	0.00, 0.57, 0.28, 0.22
HSL	329°, 51%, 56%
HSV	329°, 57%, 78%
XYZ	32.1019, 20.7900, 28.7064
YIQ	126.1110, 49.6010, 42.7290

Conversions

Conversions Part 2

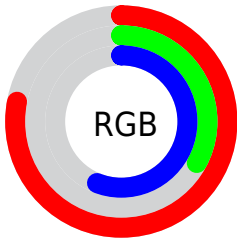
Format	Color
R_{YB}	200, 85, 144
Decimal	13129104
CIE Lab	52.72, 52.00, -9.76
CIE LCh	53, 52.908, 349.368
Yxy	20.7910, 0.3934, 0.2548
Android (android.graphics.Color)	4291319184 (0xFFC85590)
YUV	126.1110, 8.8193, 64.8007
Hunter-Lab	45.5960, 45.8802, -5.4107

Details

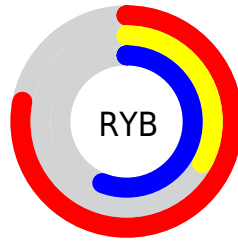
The HunterLab color **45.5960, 45.8802, -5.4107** is a dark color, and the websafe version is hex **CC6699**. The color can be described as middle muted rose. A complement of this color would be **67.2038, -40.0236, 18.4760**, and the grayscale version is **45.6744, -2.4371, 2.4816**.

A 20% lighter version of the original color is **66.1834, 47.7973, -6.2427**, and **27.2611, 42.2599, -5.4935** is the 20% darker color. If you saturate the color by 10%, you get **42.1773, 53.2869, -4.9172**, and if you desaturate by 10%, it is **49.7074, 37.5585, -5.0432**.

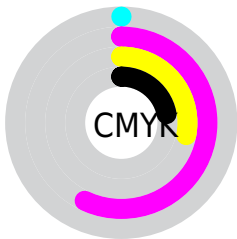
Distribution



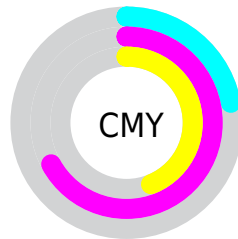
- Red (78%)
- Green (33%)
- Blue (56%)



- Red (78%)
- Yellow (33%)
- Blue (56%)



- Cyan (0%)
- Magenta (57%)
- Yellow (28%)
- Black (22%)



- Cyan (22%)
- Magenta (67%)
- Yellow (44%)

Brightness & Saturation Gradients

These gradients show how the HunterLab color 45.5960, 45.8802, -5.4107 changes by changing the brightness by 10 percent. The first figure shows a shift by +10% for each color and the second figure -10%.

Similar to the brightness gradients but the following saturation gradients show a change of the HunterLab color 45.5960, 45.8802, -5.4107 by changing the saturation by 10% instead.

45.5960, 45.8802,
-5.4107

45.5960, 45.8802,
-5.4107

160.0518, 58.1948,
-2.7441

36.0157, 44.0048,
-5.4342

66.8876, 49.3000,
-5.1647

27.2191, 42.0465,
-5.3839

78.5092, 50.8490,
-4.9564

19.2848, 40.0701,
-5.2490

90.7355, 52.2958,
-4.6971

12.3194, 38.2933,
-5.0210

103.5378, 53.6462,
-4.3903

5.4874, 48.1806,
-7.0830

116.8913, 54.9060,
-4.0391

0.0000, INF, NaN

0.0000, NaN, NaN

130.7741, 56.0807,

-3.6462

0.0000, NaN, NaN

145.1667, 57.1754,
-3.2139

0.0000, NaN, NaN

■ 45.5960, 45.8802,
-5.4107

■ 45.5960, 45.8802,
-5.4107

■ 42.1773, 53.2869,
-4.9172

■ 49.7074, 37.5585,
-5.0432

■ 39.5286, 59.2035,
-3.4679

■ 54.4149, 28.7970,
-3.9664

■ 37.6931, 63.0788,
-1.0788

■ 59.6303, 19.9045,
-2.3278

■ 36.6181, 64.7344,
2.0397

■ 65.2757, 11.0615,
-0.2551

■ 36.4016, 65.0071,
2.8374

■ 71.2859, 2.3573,
2.1517

■ 77.6081, -6.1737,
4.8173

■ 84.1996, -14.5283,
7.6860

■ 91.0261, -22.7186,
10.7169

■ 94.6605, -25.9336,
10.2177

Harmonies

Analogous

The Analogous color harmony consists of three colors that are next to each other on the color wheel.



45.5972, 33.4812, -31.3882



45.5960, 45.8802, -5.4107



45.5972, 43.6325, 13.7185

Triad

The Triadic color harmony groups three colors that are evenly spaced from another and form a triangle on the color wheel.



45.5972, 45.8774, -5.4095



45.5972, -15.3845, 26.2125



45.5972, -26.4118, -38.7318

Complementary

The Complementary color scheme is a pair of colors which are on the opposite of each other on the color wheel.



45.5960, 45.8802, -5.4107



67.2038, -40.0236, 18.4760

Split Complementary

Split-complementary colors differ from the complementary color scheme. The scheme consists of three colors, the original color and two neighbors of the complement color.



45.5972, -35.3232, -12.6278



45.5960, 45.8802, -5.4107



45.5972, -29.8230, 21.4177

Square

The Square scheme is like the rectangle color scheme, but the four colors are evenly spaced on the color wheel.



45.5972, 45.8774, -5.4095



45.5972, 5.4677, 26.7175



45.5972, -36.4435, 9.1746



45.5972, -9.8343, -55.7726

Rectangle

The Rectangle color scheme consists of four colors that form a rectangle on the color wheel.



45.5960, 45.8802, -5.4107



45.5972, 34.2409, 21.0789



45.5972, -36.4435, 9.1746



45.5972, -30.2610, -30.2843

Sweetspot

The Sweet Spot groups the original color and five complimentary colors.



45.5972, 45.8774, -5.4095



86.0850, 14.2622, -0.2604



40.3667, 38.0887, -54.7194



39.1062, 7.6892, -0.3969

0.0000, NaN, NaN



46.2646, -2.4686, 2.5136

Same Dimension

The Same Dimension uses a secret algorithm to generate beautiful new colors.



45.5972, 45.8774, -5.4095



54.5304, 72.2707, -6.1150



44.1183, 39.2579, 15.7774



32.7510, 1.8598, 0.7832



29.0576, 51.9500, 1.8156



6.4374, 11.7188, -1.2240

Inverse Universe

The Inverse Universe completely reimagines the original color for something new.



45.5972, 45.8774, -5.4095



54.5304, 72.2707, -6.1150



68.7905, -30.5919, -4.2383



32.7510, 1.8598, 0.7832



29.0576, 51.9500, 1.8156



6.4374, 11.7188, -1.2240

Previews

White Background



This preview shows how the HunterLab color 45.5960, 45.8802, -5.4107 looks on a white background.

Color Contrast Check

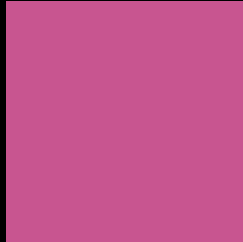
Large Text (above 18pt) WCAG AA ✓ Pass

Any Text WCAG AA × Fail

Large Text (above 18pt) WCAG AAA × Fail

Any Text WCAG AAA × Fail

Black Background



This preview shows how the HunterLab color 45.5960, 45.8802, -5.4107 looks on a black background.

Color Contrast Check

Large Text (above 18pt) WCAG AA ✓ Pass

Any Text WCAG AA ✓ Pass

Large Text (above 18pt) WCAG AAA ✓ Pass

Any Text WCAG AAA × Fail

If you want to check with other color combinations, try the [Color Contrast Checker](#).

HunterLab 45.5960, 45.8802, -5.4107 Background



This preview shows how black text looks on a background with the HunterLab color 45.5960, 45.8802, -5.4107.



This preview shows how white text looks on a background with the HunterLab color 45.5960, 45.8802, -5.4107.

-5.4107.

Color Blindness Simulation

Color vision deficiency is a very complex topic, and I could not describe the different causes any better than Wikipedia does, so if you want to learn more, you should check out their [article about color blindness](#).

Dichromacy



Original Color

45.5960, 45.8802, -5.4107

Protanopia

45.9546, 3.0694, -21.3377

Deuteranopia

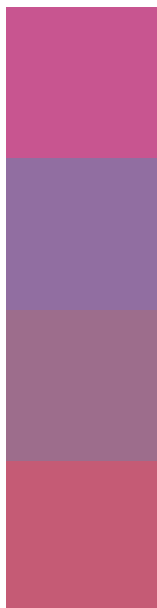
45.8121, 2.9899, -2.8372



Tritanopia

45.4761, 34.7036, 12.5779

Trichromacy



Original Color

45.5960, 45.8802, -5.4107

Protanomaly

44.4351, 17.3874, -17.3052

Deuteranomaly

44.7200, 17.9625, -5.0237

Tritanomaly

45.4278, 38.2940, 6.6976

Monochromacy



Original Color

45.5960, 45.8802, -5.4107

Achromatopsia

45.6768, -2.4372, 2.4817

Achromatomaly

44.5361, 14.4657, -1.8453

CSS Examples

Text

The CSS property to change the color of the text to HunterLab 45.5960, 45.8802, -5.4107 is called "color". The color property can be set on classes, ids or directly on the HTML element.

This example shows how text in the color `rgb(200, 85, 144)` looks like.

```
.text, #text, p{  
    color:rgb(200, 85, 144)  
}
```

If you want to add a text shadow in that color use the text-shadow property, you can generate a text shadow directly with our [CSS Text Shadow Generator](#).

Here you see how black text with a 4 pixel rgb(200, 85, 144) colored shadow looks like.

```
.shadow{ text-shadow: 4px 4px 2px rgb(200, 85, 144) }
```

Border

The CSS property to change the border of an element to HunterLab 45.5960, 45.8802, -5.4107 is called "border". The border property can be set on classes, ids or directly on the HTML element.

This example shows the color as border, it can be applied via the CSS property "border" or "border-color".

```
.border, #border, table{ border:4px solid rgb(200, 85, 144) }
```


If only the border color should be changed use the property `border-color`.

```
.border{ border-color:rgb(200, 85, 144) }
```

If you want to add a box shadow in that color use:

Here you see how a box with a 4 pixel `rgb(200, 85, 144)` colored shadow looks like.

```
.boxshadow{ -moz-box-shadow:4px 4px 4px  
4px rgb(200, 85, 144); -webkit-box-  
shadow:4px 4px 4px 4px rgb(200, 85, 144);  
box-shadow:4px 4px 4px 4px rgb(200, 85,  
144) }
```

Background

The CSS property to change the background color of an element to HunterLab 45.5960, 45.8802, -5.4107 is called "background". The background property can be set on classes, ids or directly on the HTML element.

```
.background, #background, body{  
background: rgb(200, 85, 144) }
```

If only the background color should be changed can be used:

```
.background{ background-color: rgb(200, 85,  
144) }
```

This example shows the color as background, it is applied via the CSS property "background".

To optimize and compress your CSS code, you can use our [online CSS compressor and optimizer](#) based on csstidy. If you want to create a linear or radial gradient as background or border, check our [CSS Gradient Generator](#).

Hey! You found this booklet interesting? Support Converting Colors with the new Membership Option!

The pro membership hides all ads, plus gives you double the colors in the color bucket, and more awesome pro features!

[Learn more, Memberships starting at \\$2.50/m!](#)

**Follow me
on Twitter!**

@ConvertingColor