

Converting Colors

HunterLab(45.6284, 6.3135,
11.7095)

Have a look what the booklet for
HunterLab(45.6284, 6.3135,
11.7095) contains.

HunterLab(45.6600, 6.0765, 11.5794)	3
<i>Conversions</i>	4
<i>Details</i>	6
<i>Harmonies</i>	12
<i>Previews</i>	24
<i>Color Blindness Simulation</i>	28
<i>CSS Examples</i>	31

Color

**HunterLab(45.6600, 6.0765,
11.5794)**

Conversions

Conversions Part 1

Format	Color
Hex	987767
RGB	152, 119, 103
RGB Percent	60%, 47%, 40%
CMY	0.4039, 0.5333, 0.5961
CMYK	0.00, 0.22, 0.32, 0.40
HSL	20°, 19%, 50%
HSV	20°, 32%, 60%
XYZ	21.9939, 20.8484, 15.6969
YIQ	127.0430, 24.8040, 2.0200

Conversions

Conversions Part 2

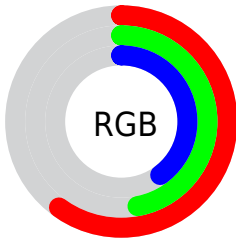
Format	Color
R_{YB}	152, 127, 103
Decimal	9992039
CIE Lab	52.78, 10.49, 13.72
CIE LCh	53, 17.271, 52.617
Yxy	20.8493, 0.3757, 0.3561
Android (android.graphics.Color)	4288182119 (0xFF987767)
YUV	127.0430, -11.8532, 21.8873
Hunter-Lab	45.6600, 6.0765, 11.5794

Details

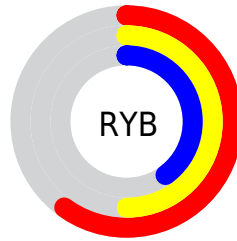
The HunterLab color $45.6600, 6.0765, 11.5794$ is a dark color, and the websafe version is hex 996666 . A complement of this color would be $47.7055, -8.4076, -7.6707$, and the grayscale version is $46.1244, -2.4611, 2.5060$.

A 20% lighter version of the original color is $66.8762, 6.0867, 14.2115$, and $27.3885, 5.6592, 8.8765$ is the 20% darker color. If you saturate the color by 10%, you get $42.7371, 9.3542, 13.7496$, and if you desaturate by 10%, it is $48.7360, 3.0273, 9.1564$.

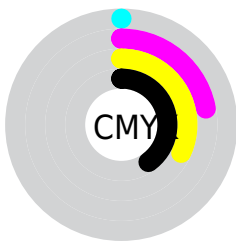
Distribution



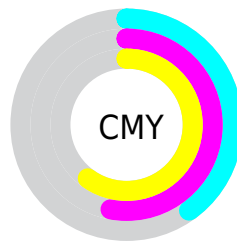
- Red (60%)
- Green (47%)
- Blue (40%)



- Red (60%)
- Yellow (50%)
- Blue (40%)



- Cyan (0%)
- Magenta (22%)
- Yellow (32%)
- Black (40%)



- Cyan (40%)
- Magenta (53%)
- Yellow (60%)

Brightness & Saturation Gradients

These gradients show how the HunterLab color 45.6600, 6.0765, 11.5794 changes by changing the brightness by 10 percent. The first figure shows a shift by +10% for each color and the second figure -10%.

Similar to the brightness gradients but the following saturation gradients show a change of the HunterLab color 45.6600, 6.0765, 11.5794 by changing the saturation by 10% instead.

■ 45.6600, 6.0765,
11.5794

■ 45.6600, 6.0765,
11.5794

160.1489, 4.1268,
23.4987

■ 36.0748, 5.9905,
10.2006

■ 66.9602, 6.0200,
14.2597

■ 27.2729, 5.8163,
8.7728

■ 78.5858, 5.8973,
15.5793

■ 19.3328, 5.5346,
7.2673

■ 90.8159, 5.7190,
16.8937

■ 12.3607, 5.1189,
5.8629

■ 103.6218, 5.4895,
18.2069

■ 5.5518, 7.9335,
3.8863

116.9787, 5.2126,
19.5220

0.0000, NaN, NaN

0.0000, NaN, NaN

130.8649, 4.8915,

20.8412

0.0000, NaN, NaN

145.2607, 4.5288,
22.1663

0.0000, NaN, NaN

■ 45.6600, 6.0765,
11.5794

■ 45.6600, 6.0765,
11.5794

■ 42.7371, 9.3542,
13.7496

■ 48.7360, 3.0273,
9.1564

■ 39.9832, 12.8705,
15.6183

■ 51.9454, 0.1987,
6.5180

■ 37.4208, 16.6145,
17.1328

■ 55.2750, -2.4282,
3.6974

■ 35.0735, 20.5552,
18.2371

■ 58.7127, -4.8718,
0.7209

■ 32.9662, 24.6297,
18.8798

■ 62.2480, -7.1507,
-2.3901

■ 31.1230, 28.7343,
19.0303

■ 65.8720, -9.2822,
-5.6182

■ 29.8768, 31.8033,
18.9667

■ 69.5771, -11.2823,
-8.9496

■ 73.3566, -13.1657,
-12.3728

■ 77.2048, -14.9450,
-15.8785

Harmonies

Analogous

The Analogous color harmony consists of three colors that are next to each other on the color wheel.



45.6611, 10.7421, 7.1659



45.6600, 6.0765, 11.5794



45.6611, -0.6861, 13.5013

Triad

The Triadic color harmony groups three colors that are evenly spaced from another and form a triangle on the color wheel.



45.6611, 6.0748, 11.5801



45.6611, -15.1039, 4.1095



45.6611, 2.8850, -11.0722

Complementary

The Complementary color scheme is a pair of colors which are on the opposite of each other on the color wheel.



45.6600, 6.0765, 11.5794



47.7055, -8.4076, -7.6707

Split Complementary

Split-complementary colors differ from the complementary color scheme. The scheme consists of three colors, the original color and two neighbors of the complement color.



45.6611, -4.1654, -12.2194



45.6600, 6.0765, 11.5794



45.6611, -14.2757, -2.7497

Square

The Square scheme is like the rectangle color scheme, but the four colors are evenly spaced on the color wheel.



45.6611, 6.0748, 11.5801



45.6611, -12.7058, 9.6334



45.6611, -10.3710, -8.9774



45.6611, 8.8241, -6.0452

Rectangle

The Rectangle color scheme consists of four colors that form a rectangle on the color wheel.



45.6600, 6.0765, 11.5794



45.6611, -5.3585, 13.3514



45.6611, -10.3710, -8.9774



45.6611, 0.5562, -11.9525

Sweetspot

The Sweet Spot groups the original color and five complimentary colors.



45.6611, 6.0748, 11.5801



69.9038, -0.4696, 7.9130



42.6233, 18.7047, -6.0600



33.0571, -0.0031, 3.9984



87.6224, -4.6753, 4.7607



35.4919, -1.8938, 1.9283

Same Dimension

The Same Dimension uses a secret algorithm to generate beautiful new colors.



45.6611, 6.0748, 11.5801



57.7217, 11.3189, 17.5878



52.2539, -5.2852, 17.5460



25.5652, -0.2952, 2.7471



27.4518, 28.8608, 17.4209



4.1722, 1.5768, 2.5985

Inverse Universe

The Inverse Universe completely reimagines the original color for something new.



47.7055, -8.4076, -7.6707



61.0188, -12.1621, -13.5616



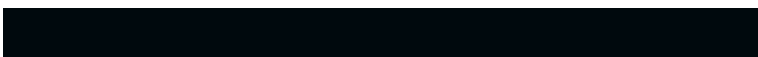
40.9090, 2.8197, -17.7957



25.8578, -2.3520, 0.0047



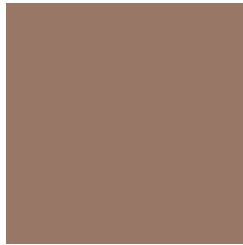
31.5999, -5.6222, -27.3603



4.6347, -1.7853, -1.9390

Previews

White Background



This preview shows how the HunterLab color 45.6600, 6.0765, 11.5794 looks on a white background.

Color Contrast Check

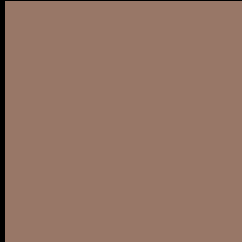
Large Text (above 18pt) WCAG AA ✓ Pass

Any Text WCAG AA × Fail

Large Text (above 18pt) WCAG AAA × Fail

Any Text WCAG AAA × Fail

Black Background



This preview shows how the HunterLab color 45.6600, 6.0765, 11.5794 looks on a black background.

Color Contrast Check

Large Text (above 18pt) WCAG AA ✓ Pass

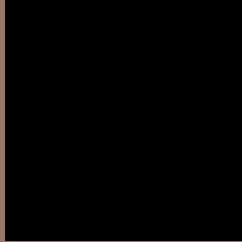
Any Text WCAG AA ✓ Pass

Large Text (above 18pt) WCAG AAA ✓ Pass

Any Text WCAG AAA × Fail

If you want to check with other color combinations, try the [Color Contrast Checker](#).

HunterLab 45.6600, 6.0765, 11.5794 Background



This preview shows how black text looks on a background with the HunterLab color 45.6600, 6.0765, 11.5794.



This preview shows how white text looks on a background with the HunterLab color 45.6600, 6.0765,

Color Blindness Simulation

Color vision deficiency is a very complex topic, and I could not describe the different causes any better than Wikipedia does, so if you want to learn more, you should check out their [article about color blindness](#).

Dichromacy



Original Color

45.6600, 6.0765, 11.5794

Protanopia

45.7699, -3.1311, 10.4849

Deuteranopia

45.6695, 3.4007, 11.5419



Tritanopia

45.6525, 11.1069, 3.1274

Trichromacy



Original Color

45.6600, 6.0765, 11.5794

Protanomaly

45.5646, 0.3674, 10.6927

Deuteranomaly

45.6090, 4.5602, 11.5028

Tritanomaly

45.5842, 9.1522, 6.3593

Monochromacy



Original Color

45.6600, 6.0765, 11.5794

Achromatopsia

46.0685, -2.4581, 2.5030

Achromatomaly

45.7794, 0.3291, 6.0170

CSS Examples

Text

The CSS property to change the color of the text to HunterLab 45.6600, 6.0765, 11.5794 is called "color". The color property can be set on classes, ids or directly on the HTML element.

This example shows how text in the color `rgb(152, 119, 103)` looks like.

```
.text, #text, p{  
    color:rgb(152, 119, 103)  
}
```

If you want to add a text shadow in that color use the text-shadow property, you can generate a text shadow directly with our [CSS Text Shadow Generator](#).

Here you see how black text with a 4 pixel rgb(152, 119, 103) colored shadow looks like.

```
.shadow{ text-shadow: 4px 4px 2px rgb(152, 119, 103) }
```

Border

The CSS property to change the border of an element to HunterLab 45.6600, 6.0765, 11.5794 is called "border". The border property can be set on classes, ids or directly on the HTML element.

This example shows the color as border, it can be applied via the CSS property "border" or "border-color".

```
.border, #border, table{ border:4px solid rgb(152, 119, 103) }
```


If only the border color should be changed use the property `border-color`.

```
.border{ border-color:rgb(152, 119, 103) }
```

If you want to add a box shadow in that color use:

Here you see how a box with a 4 pixel `rgb(152, 119, 103)` colored shadow looks like.

```
.boxshadow{ -moz-box-shadow:4px 4px 4px  
4px rgb(152, 119, 103); -webkit-box-  
shadow:4px 4px 4px 4px rgb(152, 119, 103);  
box-shadow:4px 4px 4px 4px rgb(152, 119,  
103) }
```

Background

The CSS property to change the background color of an element to HunterLab 45.6600, 6.0765, 11.5794 is called "background". The background property can be set on classes, ids or directly on the HTML element.

```
.background, #background, body{  
background: rgb(152, 119, 103) }
```

If only the background color should be changed can be used:

```
.background{ background-color: rgb(152,  
119, 103) }
```

This example shows the color as background, it is applied via the CSS property "background".

To optimize and compress your CSS code, you can use our [online CSS compressor and optimizer](#) based on csstidy. If you want to create a linear or radial gradient as background or border, check our [CSS Gradient Generator](#).

Hey! You found this booklet interesting? Support Converting Colors with the new Membership Option!

The pro membership hides all ads, plus gives you double the colors in the color bucket, and more awesome pro features!

[Learn more, Memberships starting at \\$2.50/m!](#)

**Follow me
on Twitter!**

@ConvertingColor