

# Converting Colors

HunterLab(45.6883, 80.0864,  
12.2998)

Have a look what the booklet for  
HunterLab(45.6883, 80.0864,  
12.2998) contains.

<b>HunterLab(45.6719, 80.0811, 12.1952)</b> .....	3
<i><b>Conversions</b></i> .....	4
<i><b>Details</b></i> .....	6
<i><b>Harmonies</b></i> .....	12
<i><b>Previews</b></i> .....	24
<i><b>Color Blindness Simulation</b></i> .....	28
<i><b>CSS Examples</b></i> .....	31

# Color

**HunterLab(45.6719, 80.0811,  
12.1952)**

# Conversions

## Conversions Part 1

Format	Color
Hex	F70369
RGB	247, 3, 105
RGB Percent	97%, 1%, 41%
CMY	0.0314, 0.9880, 0.5882
CMYK	0.00, 0.99, 0.57, 0.03
HSL	335°, 98%, 49%
HSV	335°, 99%, 97%
XYZ	40.9402, 20.8592, 15.2331
YIQ	87.5840, 112.6820, 83.4500

# Conversions

## Conversions Part 2

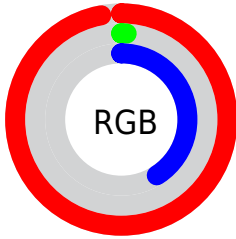
<b>Format</b>	<b>Color</b>
<b>RYB</b>	247, 3, 105
Decimal	16188265
CIELab	52.80, 81.07, 14.79
CIELCh	53, 82.410, 10.337
Yxy	20.8605, 0.5315, 0.2708
Android (android.graphics.Color)	4294378345 (0xFFFF70369)
YUV	87.5840, 8.5861, 139.8078
Hunter-Lab	45.6719, 80.0811, 12.1952

# Details

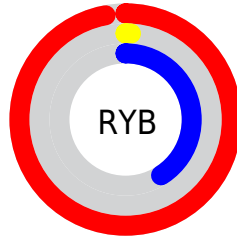
The HunterLab color **45.6719, 80.0811, 12.1952** is a dark color, and the websafe version is hex **FF0066**. The color can be described as dark saturated rose. A complement of this color would be **82.8174, -62.1338, 30.7480**, and the grayscale version is **31.0396, -1.6562, 1.6864**.

A 20% lighter version of the original color is **56.9172, 62.2459, 3.3981**, and **32.2227, 56.1623, 13.2254** is the 20% darker color. If you saturate the color by 10%, you get **45.5606, 80.1829, 12.7047**, and if you desaturate by 10%, it is **46.8342, 78.5722, 7.9889**.

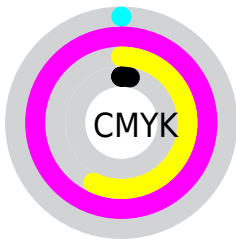
# Distribution



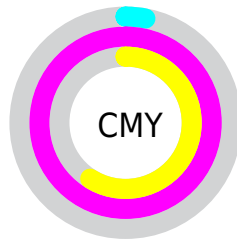
- Red (97%)
- Green (1%)
- Blue (41%)



- Red (97%)
- Yellow (1%)
- Blue (41%)



- Cyan (0%)
- Magenta (99%)
- Yellow (57%)
- Black (3%)



- Cyan (3%)
- Magenta (99%)
- Yellow (59%)

# Brightness & Saturation Gradients

These gradients show how the HunterLab color 45.6719, 80.0811, 12.1952 changes by changing the brightness by 10 percent. The first figure shows a shift by +10% for each color and the second figure -10%.

Similar to the brightness gradients but the following saturation gradients show a change of the HunterLab color 45.6719, 80.0811, 12.1952 by changing the saturation by 10% instead.



45.6719, 80.0811,  
12.1952

45.6719, 80.0811,  
12.1952

160.1675, 99.8927,  
24.5843

36.0861, 77.6278,  
10.7444

66.9741, 85.0026,  
15.0032

27.2832, 75.3516,  
9.2359

78.6005, 87.3845,  
16.3799

19.3420, 73.5721,  
7.6384

90.8313, 89.6866,  
17.7479

12.3686, 73.1630,  
6.2200

103.6378, 91.9022,  
19.1118

5.5641, 94.1488,  
3.8948

116.9955, 94.0295,  
20.4751

0.0000, INF, NaN

0.0000, INF, NaN

130.8822, 96.0689,

21.8403

0.0000, NaN, NaN

145.2787, 98.0225,  
23.2095

0.0000, NaN, NaN

■ 45.6719, 80.0811,  
12.1952

■ 45.6719, 80.0811,  
12.1952

■ 45.5606, 80.1829,  
12.7047

■ 46.8342, 78.5722,  
7.9889

■ 48.9756, 74.2667,  
4.2819

■ 52.1987, 67.2506,  
1.4551

■ 56.4596, 58.2075,  
-0.3386

■ 61.6524, 47.9189,  
-1.1178

■ 67.6502, 37.0249,  
-1.0016

■ 74.3299, 25.9538,  
-0.1427

■ 81.5837, 14.9514,  
1.3125

■ 89.3222, 4.1371,  
3.2403

# Harmonies

## Analogous

The Analogous color harmony consists of three colors that are next to each other on the color wheel.



45.6733, 75.7081, -23.4037



45.6719, 80.0811, 12.1952



45.6733, 57.9732, 27.0581

# Triad

The Triadic color harmony groups three colors that are evenly spaced from another and form a triangle on the color wheel.



45.6733, 80.0758, 12.1964



45.6733, -37.1857, 28.9020



45.6733, -22.2082, -101.5083

# Complementary

The Complementary color scheme is a pair of colors which are on the opposite of each other on the color wheel.



45.6719, 80.0811, 12.1952



82.8174, -62.1338, 30.7480

# Split Complementary

Split-complementary colors differ from the complementary color scheme. The scheme consists of three colors, the original color and two neighbors of the complement color.



45.6733, -41.9888, -57.8653



45.6719, 80.0811, 12.1952



45.6733, -48.7443, 18.7074

# Square

The Square scheme is like the rectangle color scheme, but the four colors are evenly spaced on the color wheel.



45.6733, 80.0758, 12.1964



45.6733, -13.4639, 31.0677



45.6733, -50.2027, -9.9740



45.6733, 9.7412, -108.7106



# Rectangle

The Rectangle color scheme consists of four colors that form a rectangle on the color wheel.



45.6719, 80.0811, 12.1952



45.6733, 34.1315, 30.1365



45.6733, -50.2027, -9.9740



45.6733, -30.2159, -89.6455

# Sweetspot

The Sweet Spot groups the original color and five complimentary colors.



45.6733, 80.0758, 12.1964



76.1424, 28.3929, -0.3006



35.3134, 79.0073, -124.5980



33.8530, 15.3807, -0.3353

0.0000, NaN, NaN



46.2646, -2.4686, 2.5136



# Same Dimension

The Same Dimension uses a secret algorithm to generate beautiful new colors.



45.6733, 80.0758, 12.1964



47.2359, 83.1206, 13.2539



45.0085, 74.3705, 28.9201



40.7399, 2.2539, 1.4174



33.1737, 58.4599, 8.6536



9.9360, 17.7009, 1.1086



# Inverse Universe

The Inverse Universe completely reimagines the original color for something new.



45.6733, 80.0758, 12.1964



47.2359, 83.1206, 13.2539



79.8373, -38.3684, -16.8248



40.7399, 2.2539, 1.4174



33.1737, 58.4599, 8.6536



9.9360, 17.7009, 1.1086



# Previews

## White Background



This preview shows how the HunterLab color 45.6719, 80.0811, 12.1952 looks on a white background.

## Color Contrast Check

Large Text (above 18pt) WCAG AA ✓ Pass

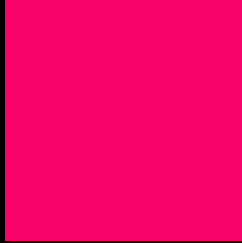
Any Text WCAG AA × Fail

Large Text (above 18pt) WCAG AAA × Fail

Any Text WCAG AAA × Fail



# Black Background



This preview shows how the HunterLab color 45.6719, 80.0811, 12.1952 looks on a black background.

## Color Contrast Check

Large Text (above 18pt) WCAG AA ✓ Pass

Any Text WCAG AA ✓ Pass

Large Text (above 18pt) WCAG AAA ✓ Pass

Any Text WCAG AAA × Fail

If you want to check with other color combinations, try the [Color Contrast Checker](#).

# HunterLab 45.6719, 80.0811, 12.1952 Background



This preview shows how black text looks on a background with the HunterLab color 45.6719, 80.0811, 12.1952.



This preview shows how white text looks on a background with the HunterLab color 45.6719, 80.0811,



# Color Blindness Simulation

Color vision deficiency is a very complex topic, and I could not describe the different causes any better than Wikipedia does, so if you want to learn more, you should check out their [article about color blindness](#).

## Dichromacy



### Original Color

45.6719, 80.0811, 12.1952

### Protanopia

46.2160, 1.1443, -10.1643

### Deuteranopia

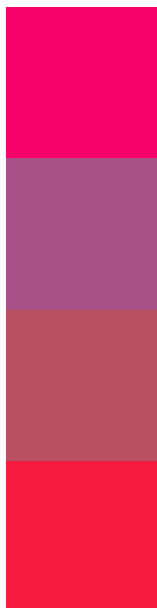
46.0753, 3.0594, 14.5134



## Tritanopia

46.0669, 69.9853, 27.0277

# Trichromacy



## Original Color

45.6719, 80.0811, 12.1952

## Protanomaly

39.8471, 34.7445, -9.4960

## Deuteranomaly

40.9965, 37.3495, 8.8439

## Tritanomaly

45.5999, 74.2222, 23.0911

# Monochromacy



## Original Color

45.6719, 80.0811, 12.1952

## Achromatopsia

31.2390, -1.6668, 1.6973

## Achromatomaly

31.3774, 32.3421, -0.1092

# CSS Examples

## Text

The CSS property to change the color of the text to HunterLab 45.6719, 80.0811, 12.1952 is called "color". The color property can be set on classes, ids or directly on the HTML element.

This example shows how text in the color `rgb(247, 3, 105)` looks like.

```
.text, #text, p{  
    color:rgb(247, 3, 105)  
}
```

If you want to add a text shadow in that color use the text-shadow property, you can generate a text shadow directly with our [CSS Text Shadow Generator](#).

Here you see how black text with a 4 pixel rgb(247, 3, 105) colored shadow looks like.

```
.shadow{ text-shadow: 4px 4px 2px rgb(247, 3, 105) }
```

## Border

The CSS property to change the border of an element to HunterLab 45.6719, 80.0811, 12.1952 is called "border". The border property can be set on classes, ids or directly on the HTML element.

This example shows the color as border, it can be applied via the CSS property "border" or "border-color".

```
.border, #border, table{ border:4px solid rgb(247, 3, 105) }
```



If only the border color should be changed use the property border-color.

```
.border{ border-color:rgb(247, 3, 105) }
```

If you want to add a box shadow in that color use:

Here you see how a box with a 4 pixel rgb(247, 3, 105) colored shadow looks like.

```
.boxshadow{ -moz-box-shadow:4px 4px 4px  
4px rgb(247, 3, 105); -webkit-box-  
shadow:4px 4px 4px 4px rgb(247, 3, 105);  
box-shadow:4px 4px 4px 4px rgb(247, 3,  
105) }
```

# Background

The CSS property to change the background color of an element to HunterLab 45.6719, 80.0811, 12.1952 is called "background". The background property can be set on classes, ids or directly on the HTML element.

```
.background, #background, body{  
background: rgb(247, 3, 105) }
```

If only the background color should be changed can be used:

```
.background{ background-color: rgb(247, 3,  
105) }
```

This example shows the color as background, it is applied via the CSS property "background".

To optimize and compress your CSS code, you can use our [online CSS compressor and optimizer](#) based on csstidy. If you want to create a linear or radial gradient as background or border, check our [CSS Gradient Generator](#).

# Hey! You found this booklet interesting? Support Converting Colors with the new Membership Option!

The pro membership hides all ads, plus gives you double the colors in the color bucket, and more awesome pro features!

**[Learn more, Memberships starting at \\$2.50/m!](#)**

**Follow me  
on Twitter!**

**@ConvertingColor**