

# Converting Colors

HunterLab(45.8018, 72.0987,  
15.4703)

Have a look what the booklet for  
HunterLab(45.8018, 72.0987,  
15.4703) contains.

<b>HunterLab(45.8018, 72.0987, 15.4703)</b> .....	3
<b><i>Conversions</i></b> .....	4
<b><i>Details</i></b> .....	6
<b><i>Harmonies</i></b> .....	12
<b><i>Previews</i></b> .....	24
<b><i>Color Blindness Simulation</i></b> .....	28
<b><i>CSS Examples</i></b> .....	31

# Color

**HunterLab(45.8018, 72.0987,  
15.4703)**

# Conversions

## Conversions Part 1

Format	Color
Hex	F1275F
RGB	241, 39, 95
RGB Percent	95%, 15%, 37%
CMY	0.0549, 0.8470, 0.6274
CMYK	0.00, 0.84, 0.61, 0.05
HSL	343°, 88%, 55%
HSV	343°, 84%, 95%
XYZ	39.0667, 20.9780, 12.8166
YIQ	105.7820, 102.4160, 60.2400

# Conversions

## Conversions Part 2

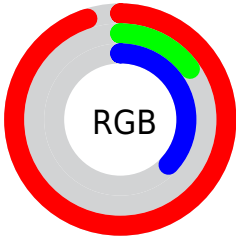
<b>Format</b>	<b>Color</b>
<b>R<sub>YB</sub></b>	241, 39, 95
Decimal	15804255
CIE Lab	52.93, 74.66, 20.82
CIE LCh	53, 77.509, 15.583
Yxy	20.9793, 0.5362, 0.2879
Android (android.graphics.Color)	4293994335 (0xFFFF1275F)
YUV	105.7820, -5.3155, 118.5862
Hunter-Lab	45.8018, 72.0987, 15.4703

# Details

The HunterLab color **45.8018, 72.0987, 15.4703** is a dark color, and the websafe version is hex **FF3366**. The color can be described as dark washed red. A complement of this color would be **81.7592, -53.4528, 16.1509**, and the grayscale version is **37.8778, -2.0211, 2.0580**.

A 20% lighter version of the original color is **58.3348, 56.1532, 9.7020**, and **30.9474, 53.7424, 14.2292** is the 20% darker color. If you saturate the color by 10%, you get **44.2540, 75.0445, 19.0317**, and if you desaturate by 10%, it is **48.4235, 66.4229, 12.0812**.

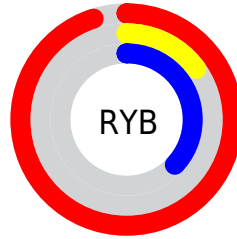
# Distribution



Red (95%)

Green (15%)

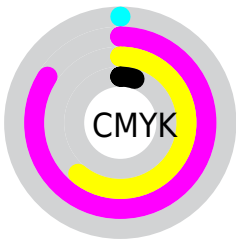
Blue (37%)



Red (95%)

Yellow (15%)

Blue (37%)

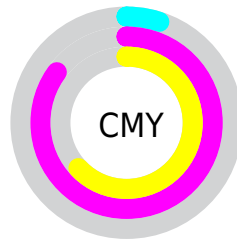


Cyan (0%)

Magenta (84%)

Yellow (61%)

Black (5%)



Cyan (5%)

Magenta (85%)

Yellow (63%)

# Brightness & Saturation Gradients

These gradients show how the HunterLab color 45.8018, 72.0987, 15.4703 changes by changing the brightness by 10 percent. The first figure shows a shift by +10% for each color and the second figure -10%.

Similar to the brightness gradients but the following saturation gradients show a change of the HunterLab color 45.8018, 72.0987, 15.4703 by changing the saturation by 10% instead.



45.8018, 72.0987,  
15.4703

45.8018, 72.0987,  
15.4703

160.3648, 90.4411,  
30.5815

36.2062, 69.7172,  
13.5975

67.1216, 76.7614,  
19.0184

27.3926, 67.4317,  
11.6195

78.7561, 78.9849,  
20.7263

19.4396, 65.4843,  
9.4893

90.9946, 81.1191,  
22.4053

12.4527, 64.5490,  
8.2289

103.8085, 83.1613,  
24.0631

5.6923, 80.9819,  
3.9846

117.1731, 85.1120,  
25.7056

0.0000, INF, NaN

0.0000, INF, NaN

131.0667, 86.9735,

27.3373

0.0000, NaN, NaN

145.4697, 88.7487,  
28.9616

0.0000, NaN, NaN

■ 45.8018, 72.0987,  
15.4703

■ 45.8018, 72.0987,  
15.4703

■ 44.2540, 75.0445,  
19.0317

■ 48.4235, 66.4229,  
12.0812


■ 43.7075, 75.7720,  
21.0993

■ 52.1156, 58.5428,  
9.1753


■ 56.7930, 49.2190,  
6.9273


■ 62.3308, 39.1514,  
5.3767

■ 68.5989, 28.8366,  
4.4765

 75.4799, 18.5688,  
4.1415

 82.8753, 8.4947,  
4.2797

 90.7052, -1.3301,  
4.8074

 98.6080, -10.4208,  
5.3125

# Harmonies

## Analogous

The Analogous color harmony consists of three colors that are next to each other on the color wheel.



45.8032, 72.5958, -14.3776



45.8018, 72.0987, 15.4703



45.8032, 48.3654, 27.5561

# Triad

The Triadic color harmony groups three colors that are evenly spaced from another and form a triangle on the color wheel.



45.8032, 72.0937, 15.4714



45.8032, -38.2959, 27.3143



45.8032, -16.6269, -96.3906

# Complementary

The Complementary color scheme is a pair of colors which are on the opposite of each other on the color wheel.



45.8018, 72.0987, 15.4703



81.7592, -53.4528, 16.1509

# Split Complementary

Split-complementary colors differ from the complementary color scheme. The scheme consists of three colors, the original color and two neighbors of the complement color.



45.8032, -37.7138, -61.0729



45.8018, 72.0987, 15.4703



45.8032, -47.7212, 14.6856

# Square

The Square scheme is like the rectangle color scheme, but the four colors are evenly spaced on the color wheel.



45.8032, 72.0937, 15.4714



45.8032, -17.6665, 30.5431



45.8032, -47.5420, -15.9313



45.8032, 15.0638, -95.5809



# Rectangle

The Rectangle color scheme consists of four colors that form a rectangle on the color wheel.



45.8018, 72.0987, 15.4703



45.8032, 25.5040, 30.0817



45.8032, -47.5420, -15.9313



45.8032, -24.9740, -87.6696

# Sweetspot

The Sweet Spot groups the original color and five complimentary colors.



45.8032, 72.0937, 15.4714



79.5174, 21.1764, 4.4312



42.3857, 78.7632, -88.9112



35.5727, 11.5777, 2.0902

0.0000, NaN, NaN



46.2646, -2.4686, 2.5136



# Same Dimension

The Same Dimension uses a secret algorithm to generate beautiful new colors.



45.8032, 72.0937, 15.4714



46.5948, 80.7624, 22.6094



50.0006, 54.2927, 29.4824



39.7880, 1.9398, 2.0605



32.2165, 55.9105, 15.0908



9.3793, 16.4469, 3.0793



# Inverse Universe

The Inverse Universe completely reimagines the original color for something new.



45.8032, 72.0937, 15.4714



46.5948, 80.7624, 22.6094



68.4273, -23.9212, -30.3604



39.7880, 1.9398, 2.0605



32.2165, 55.9105, 15.0908



9.3793, 16.4469, 3.0793



# Previews

## White Background



This preview shows how the HunterLab color 45.8018, 72.0987, 15.4703 looks on a white background.

## Color Contrast Check

Large Text (above 18pt) WCAG AA ✓ Pass

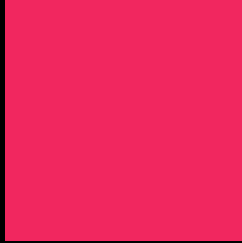
Any Text WCAG AA × Fail

Large Text (above 18pt) WCAG AAA × Fail

Any Text WCAG AAA × Fail



# Black Background



This preview shows how the HunterLab color 45.8018, 72.0987, 15.4703 looks on a black background.

## Color Contrast Check

Large Text (above 18pt) WCAG AA ✓ Pass

Any Text WCAG AA ✓ Pass

Large Text (above 18pt) WCAG AAA ✓ Pass

Any Text WCAG AAA × Fail

If you want to check with other color combinations, try the [Color Contrast Checker](#).

# HunterLab 45.8018, 72.0987, 15.4703 Background



This preview shows how black text looks on a background with the HunterLab color 45.8018, 72.0987, 15.4703.



This preview shows how white text looks on a background with the HunterLab color 45.8018, 72.0987,



# Color Blindness Simulation

Color vision deficiency is a very complex topic, and I could not describe the different causes any better than Wikipedia does, so if you want to learn more, you should check out their [article about color blindness](#).

## Dichromacy



### Original Color

45.8018, 72.0987, 15.4703

### Protanopia

45.9643, -1.0332, -0.3187

### Deuteranopia

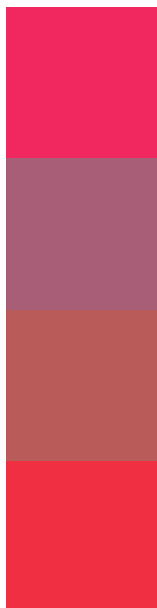
45.8323, 3.2396, 17.1805



## Tritanopia

45.7792, 65.6285, 25.3016

# Trichromacy



## Original Color

45.8018, 72.0987, 15.4703

## Protanomaly

42.0264, 26.1852, 1.7328

## Deuteranomaly

42.8880, 30.2923, 13.8920

## Tritanomaly

45.7860, 67.8832, 22.5251

# Monochromacy



## Original Color

45.8018, 72.0987, 15.4703

## Achromatopsia

37.9643, -2.0257, 2.0627

## Achromatomaly

37.3664, 25.0529, 3.5179

# CSS Examples

## Text

The CSS property to change the color of the text to HunterLab 45.8018, 72.0987, 15.4703 is called "color". The color property can be set on classes, ids or directly on the HTML element.

This example shows how text in the color `rgb(241, 39, 95)` looks like.

```
.text, #text, p{  
    color:rgb(241, 39, 95)  
}
```

If you want to add a text shadow in that color use the text-shadow property, you can generate a text shadow directly with our [CSS Text Shadow Generator](#).

Here you see how black text with a 4 pixel rgb(241, 39, 95) colored shadow looks like.

```
.shadow{ text-shadow: 4px 4px 2px rgb(241, 39, 95) }
```

## Border

The CSS property to change the border of an element to HunterLab 45.8018, 72.0987, 15.4703 is called "border". The border property can be set on classes, ids or directly on the HTML element.

This example shows the color as border, it can be applied via the CSS property "border" or "border-color".

```
.border, #border, table{ border:4px solid rgb(241, 39, 95) }
```



If only the border color should be changed use the property border-color.

```
.border{ border-color:rgb(241, 39, 95) }
```

If you want to add a box shadow in that color use:

Here you see how a box with a 4 pixel rgb(241, 39, 95) colored shadow looks like.

```
.boxshadow{ -moz-box-shadow:4px 4px 4px  
4px rgb(241, 39, 95); -webkit-box-  
shadow:4px 4px 4px 4px rgb(241, 39, 95);  
box-shadow:4px 4px 4px 4px rgb(241, 39,  
95) }
```

# Background

The CSS property to change the background color of an element to HunterLab 45.8018, 72.0987, 15.4703 is called "background". The background property can be set on classes, ids or directly on the HTML element.

```
.background, #background, body{  
background: rgb(241, 39, 95) }
```

If only the background color should be changed can be used:

```
.background{ background-color: rgb(241, 39,  
95) }
```

This example shows the color as background, it is applied via the CSS property "background".

To optimize and compress your CSS code, you can use our [online CSS compressor and optimizer](#) based on csstidy. If you want to create a linear or radial gradient as background or border, check our [CSS Gradient Generator](#).

Hey! You found this booklet interesting? Support Converting Colors with the new Membership Option!

The pro membership hides all ads, plus gives you double the colors in the color bucket, and more awesome pro features!

**[Learn more, Memberships starting at \\$2.50/m!](#)**

**Follow me  
on Twitter!**

**@ConvertingColor**