

Converting Colors

HunterLab(45.8100, 53.5079,
3.6177)

Have a look what the booklet for
HunterLab(45.8100, 53.5079,
3.6177) contains.

HunterLab(45.8100, 53.5079, 3.6177)	3
<i>Conversions</i>	4
<i>Details</i>	6
<i>Harmonies</i>	12
<i>Previews</i>	24
<i>Color Blindness Simulation</i>	28
<i>CSS Examples</i>	31

Color

**HunterLab(45.8100, 53.5079,
3.6177)**

Conversions

Conversions Part 1

Format	Color
Hex	D74B7E
RGB	215, 75, 126
RGB Percent	84%, 29%, 49%
CMY	0.1569, 0.7058, 0.5059
CMYK	0.00, 0.65, 0.41, 0.16
HSL	338°, 64%, 57%
HSV	338°, 65%, 84%
XYZ	34.3063, 20.9856, 21.9812
YIQ	122.6740, 67.0690, 45.5410

Conversions

Conversions Part 2

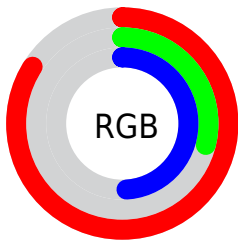
Format	Color
RYB	215, 75, 126
Decimal	14109566
CIELab	52.93, 58.87, 1.53
CIElCh	53, 58.887, 1.486
Yxy	20.9867, 0.4440, 0.2716
Android (android.graphics.Color)	4292299646 (0xFFD74B7E)
YUV	122.6740, 1.6397, 80.9699
Hunter-Lab	45.8100, 53.5079, 3.6177

Details

The HunterLab color **45.8100, 53.5079, 3.6177** is a dark color, and the websafe version is hex **CC3366**. The color can be described as middle muted rose. A complement of this color would be **72.6482, -43.8301, 15.3313**, and the grayscale version is **44.3549, -2.3667, 2.4099**.

A 20% lighter version of the original color is **63.8336, 49.0608, 0.5806**, and **27.3941, 48.8692, 2.5395** is the 20% darker color. If you saturate the color by 10%, you get **42.6815, 60.2392, 5.9256**, and if you desaturate by 10%, it is **49.7891, 45.3857, 2.0810**.

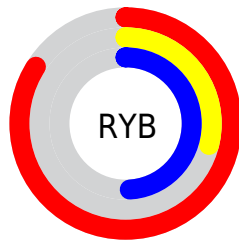
Distribution



Red (84%)

Green (29%)

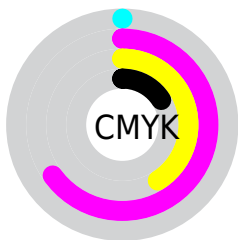
Blue (49%)



Red (84%)

Yellow (29%)

Blue (49%)

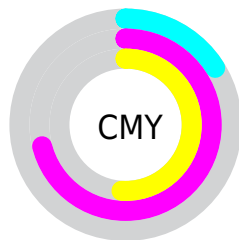


Cyan (0%)

Magenta (65%)

Yellow (41%)

Black (16%)



Cyan (16%)

Magenta (71%)

Yellow (51%)

Brightness & Saturation Gradients

These gradients show how the HunterLab color 45.8100, 53.5079, 3.6177 changes by changing the brightness by 10 percent. The first figure shows a shift by +10% for each color and the second figure -10%.

Similar to the brightness gradients but the following saturation gradients show a change of the HunterLab color 45.8100, 53.5079, 3.6177 by changing the saturation by 10% instead.

45.8100, 53.5079,
3.6177

45.8100, 53.5079,
3.6177

160.3770, 67.7769,
10.4508

36.2136, 51.4414,
3.0094

67.1308, 57.3542,
4.9359

27.3994, 49.3304,
2.4345

78.7658, 59.1251,
5.6407

19.4456, 47.2800,
1.8958

91.0047, 60.7946,
6.3749

12.4580, 45.6117,
1.3942

103.8191, 62.3667,
7.1372

5.7001, 56.0419,
1.4206

117.1842, 63.8462,
7.9268

0.0000, INF, NaN

0.0000, NaN, NaN

131.0781, 65.2379,

8.7428

0.0000, NaN, NaN

145.4815, 66.5467,
9.5844

0.0000, NaN, NaN

■ 45.8100, 53.5079,
3.6177

■ 45.8100, 53.5079,
3.6177

■ 42.6815, 60.2392,
5.9256

■ 49.7891, 45.3857,
2.0810

■ 40.4660, 64.9458,
8.8997

■ 54.5132, 36.5006,
1.2928

■ 39.1549, 67.2308,
12.2918

■ 59.8749, 27.3054,
1.1676

■ 38.7319, 67.7614,
13.9286

■ 65.7742, 18.0836,
1.5975

■ 72.1263, 8.9856,
2.4792

■ 78.8615, 0.0766,
3.7249

■ 85.9241, -8.6269,
5.2638

■ 93.2695, -17.1339,
7.0409

■ 96.3368, -18.7178,
3.8679

Harmonies

Analogous

The Analogous color harmony consists of three colors that are next to each other on the color wheel.



45.8112, 45.6397, -23.8458



45.8100, 53.5079, 3.6177



45.8112, 43.9951, 20.0240

Triad

The Triadic color harmony groups three colors that are evenly spaced from another and form a triangle on the color wheel.



45.8112, 53.5043, 3.6189



45.8112, -24.1699, 26.3723



45.8112, -22.4853, -55.3895

Complementary

The Complementary color scheme is a pair of colors which are on the opposite of each other on the color wheel.



45.8100, 53.5079, 3.6177



72.6482, -43.8301, 15.3313

Split Complementary

Split-complementary colors differ from the complementary color scheme. The scheme consists of three colors, the original color and two neighbors of the complement color.



45.8112, -35.5688, -26.9190



45.8100, 53.5079, 3.6177



45.8112, -36.3911, 18.9064

Square

The Square scheme is like the rectangle color scheme, but the four colors are evenly spaced on the color wheel.



45.8112, 53.5043, 3.6189



45.8112, -3.6389, 28.2657



45.8112, -40.0940, 1.3391



45.8112, -1.2425, -66.8087

Rectangle

The Rectangle color scheme consists of four colors that form a rectangle on the color wheel.



45.8100, 53.5079, 3.6177



45.8112, 30.0260, 25.2780



45.8112, -40.0940, 1.3391



45.8112, -27.8172, -46.9594

Sweetspot

The Sweet Spot groups the original color and five complimentary colors.



45.8112, 53.5043, 3.6189



83.5169, 16.4832, 2.4026



42.1865, 53.2121, -63.4281



37.6366, 9.0793, 0.9804

0.0000, NaN, NaN



46.2646, -2.4686, 2.5136

Same Dimension

The Same Dimension uses a secret algorithm to generate beautiful new colors.



45.8112, 53.5043, 3.6189



50.6666, 75.4769, 8.4214



47.8567, 40.3376, 21.9465



35.3480, 1.8104, 1.4661



29.9857, 52.5199, 10.3190



7.4698, 13.2847, 1.0093

Inverse Universe

The Inverse Universe completely reimagines the original color for something new.



45.8112, 53.5043, 3.6189



50.6666, 75.4769, 8.4214



67.8478, -26.6963, -14.8406



35.3480, 1.8104, 1.4661



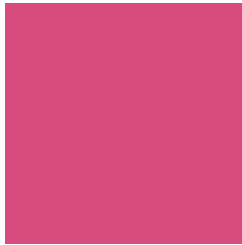
29.9857, 52.5199, 10.3190



7.4698, 13.2847, 1.0093

Previews

White Background



This preview shows how the HunterLab color 45.8100, 53.5079, 3.6177 looks on a white background.

Color Contrast Check

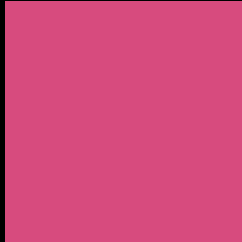
Large Text (above 18pt) WCAG AA ✓ Pass

Any Text WCAG AA × Fail

Large Text (above 18pt) WCAG AAA × Fail

Any Text WCAG AAA × Fail

Black Background



This preview shows how the HunterLab color 45.8100, 53.5079, 3.6177 looks on a black background.

Color Contrast Check

Large Text (above 18pt) WCAG AA ✓ Pass

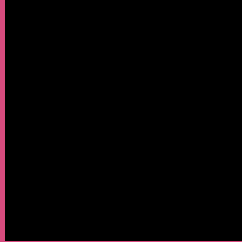
Any Text WCAG AA ✓ Pass

Large Text (above 18pt) WCAG AAA ✓ Pass

Any Text WCAG AAA × Fail

If you want to check with other color combinations, try the [Color Contrast Checker](#).

HunterLab 45.8100, 53.5079, 3.6177 Background



This preview shows how black text looks on a background with the HunterLab color 45.8100, 53.5079, 3.6177.



This preview shows how white text looks on a background with the HunterLab color 45.8100, 53.5079,

3.6177.

Color Blindness Simulation

Color vision deficiency is a very complex topic, and I could not describe the different causes any better than Wikipedia does, so if you want to learn more, you should check out their [article about color blindness](#).

Dichromacy



Original Color

45.8100, 53.5079, 3.6177

Protanopia

46.2051, 1.3981, -12.4358

Deuteranopia

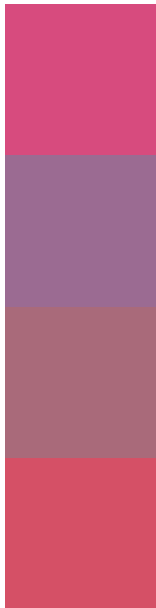
46.0962, 2.8504, 6.0060



Tritanopia

45.7035, 45.0219, 16.9734

Trichromacy



Original Color

45.8100, 53.5079, 3.6177

Protanomaly

44.2259, 19.3241, -8.8669

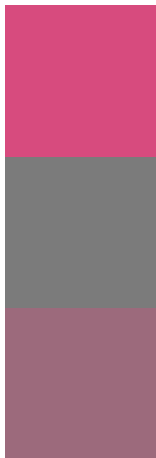
Deuteranomaly

44.8868, 20.9806, 3.7058

Tritanomaly

45.6539, 47.9873, 12.6469

Monochromacy



Original Color

45.8100, 53.5079, 3.6177

Achromatopsia

44.5050, -2.3747, 2.4180

Achromatomaly

43.3950, 16.6199, 0.9773

CSS Examples

Text

The CSS property to change the color of the text to HunterLab 45.8100, 53.5079, 3.6177 is called "color". The color property can be set on classes, ids or directly on the HTML element.

This example shows how text in the color `rgb(215, 75, 126)` looks like.

```
.text, #text, p{  
    color:rgb(215, 75, 126)  
}
```

If you want to add a text shadow in that color use the text-shadow property, you can generate a text shadow directly with our [CSS Text Shadow Generator](#).

Here you see how black text with a 4 pixel rgb(215, 75, 126) colored shadow looks like.

```
.shadow{ text-shadow: 4px 4px 2px rgb(215, 75, 126) }
```

Border

The CSS property to change the border of an element to HunterLab 45.8100, 53.5079, 3.6177 is called "border". The border property can be set on classes, ids or directly on the HTML element.

This example shows the color as border, it can be applied via the CSS property "border" or "border-color".

```
.border, #border, table{ border:4px solid rgb(215, 75, 126) }
```


If only the border color should be changed use the property `border-color`.

```
.border{ border-color:rgb(215, 75, 126) }
```

If you want to add a box shadow in that color use:

Here you see how a box with a 4 pixel `rgb(215, 75, 126)` colored shadow looks like.

```
.boxshadow{ -moz-box-shadow:4px 4px 4px  
4px rgb(215, 75, 126); -webkit-box-  
shadow:4px 4px 4px 4px rgb(215, 75, 126);  
box-shadow:4px 4px 4px 4px rgb(215, 75,  
126) }
```

Background

The CSS property to change the background color of an element to HunterLab 45.8100, 53.5079, 3.6177 is called "background". The background property can be set on classes, ids or directly on the HTML element.

```
.background, #background, body{  
background: rgb(215, 75, 126) }
```

If only the background color should be changed can be used:

```
.background{ background-color: rgb(215, 75,  
126) }
```

This example shows the color as background, it is applied via the CSS property "background".

To optimize and compress your CSS code, you can use our [online CSS compressor and optimizer](#) based on csstidy. If you want to create a linear or radial gradient as background or border, check our [CSS Gradient Generator](#).

Hey! You found this booklet interesting? Support Converting Colors with the new Membership Option!

The pro membership hides all ads, plus gives you double the colors in the color bucket, and more awesome pro features!

[Learn more, Memberships starting at \\$2.50/m!](#)

**Follow me
on Twitter!**

@ConvertingColor