

# Converting Colors

HunterLab(45.8850, 40.4527,  
-1.6896)

Have a look what the booklet for  
HunterLab(45.8850, 40.4527,  
-1.6896) contains.

<b>HunterLab(45.8520, 40.5240, -1.6398)</b> .....	3
<b><i>Conversions</i></b> .....	4
<b><i>Details</i></b> .....	6
<b><i>Harmonies</i></b> .....	12
<b><i>Previews</i></b> .....	24
<b><i>Color Blindness Simulation</i></b> .....	28
<b><i>CSS Examples</i></b> .....	31

# Color

**HunterLab(45.8520, 40.5240,  
-1.6398)**

# Conversions

## Conversions Part 1

<b>Format</b>	<b>Color</b>
Hex	C45B89
RGB	196, 91, 137
RGB Percent	77%, 36%, 54%
CMY	0.2314, 0.6431, 0.4627
CMYK	0.00, 0.54, 0.30, 0.23
HSL	334°, 47%, 56%
HSV	334°, 54%, 77%
XYZ	31.0214, 21.0241, 26.0899
YIQ	127.6390, 47.8140, 36.5660

# Conversions

## Conversions Part 2

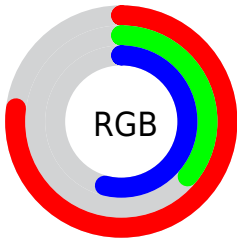
<b>Format</b>	<b>Color</b>
<b>R<sub>YB</sub></b>	196, 91, 137
Decimal	12868489
CIE <sub>Lab</sub>	52.98, 46.94, -5.30
CIE <sub>LCh</sub>	53, 47.239, 353.561
Yxy	21.0251, 0.3970, 0.2691
Android (android.graphics.Color)	4291058569 (0xFFC45B89)
YUV	127.6390, 4.6150, 59.9526
Hunter-Lab	45.8520, 40.5240, -1.6398

# Details

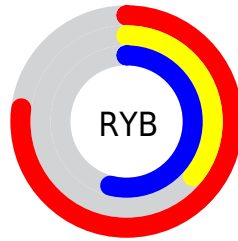
The HunterLab color **45.8520, 40.5240, -1.6398** is a dark color, and the websafe version is hex **CC6699**. The color can be described as middle muted rose. A complement of this color would be **66.2620, -36.3273, 14.3742**, and the grayscale version is **46.2895, -2.4699, 2.5150**.

A 20% lighter version of the original color is **67.2521, 43.3111, -0.7490**, and **27.3865, 36.9961, -1.9977** is the 20% darker color. If you saturate the color by 10%, you get **42.1901, 48.0545, -0.8939**, and if you desaturate by 10%, it is **50.1572, 32.3455, -1.6526**.

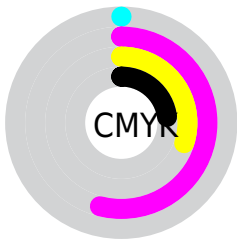
# Distribution



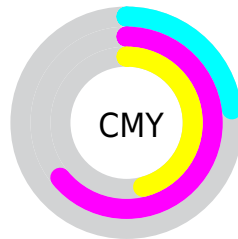
- Red (77%)
- Green (36%)
- Blue (54%)



- Red (77%)
- Yellow (36%)
- Blue (54%)



- Cyan (0%)
- Magenta (54%)
- Yellow (30%)
- Black (23%)



- Cyan (23%)
- Magenta (64%)
- Yellow (46%)

# Brightness & Saturation Gradients

These gradients show how the HunterLab color 45.8520, 40.5240, -1.6398 changes by changing the brightness by 10 percent. The first figure shows a shift by +10% for each color and the second figure -10%.

Similar to the brightness gradients but the following saturation gradients show a change of the HunterLab color 45.8520, 40.5240, -1.6398 by changing the saturation by 10% instead.



45.8520, 40.5240,  
-1.6398

45.8520, 40.5240,  
-1.6398

160.4406, 51.2891,  
2.6110

36.2524, 38.8136,  
-1.8783

67.1784, 43.5921,  
-0.9930

27.4347, 36.9988,  
-2.0534

78.8160, 44.9631,  
-0.5970

19.4771, 35.1175,  
-2.1540

91.0574, 46.2332,  
-0.1571

12.4851, 33.3152,  
-2.1658

103.8741, 47.4092,  
0.3236

5.7408, 40.3979,  
-3.5126

117.2415, 48.4973,  
0.8427

0.0000, INF, NaN

0.0000, NaN, NaN

131.1376, 49.5033,

1.3982

0.0000, NaN, NaN

145.5431, 50.4323,  
1.9881

0.0000, NaN, NaN

■ 45.8520, 40.5240,  
-1.6398

■ 45.8520, 40.5240,  
-1.6398

■ 42.1901, 48.0545,  
-0.8939

■ 50.1572, 32.3455,  
-1.6526

■ 39.2577, 54.4163,  
0.6592

■ 55.0092, 23.9111,  
-1.0524

■ 37.1195, 59.0292,  
3.0047

■ 60.3245, 15.4553,  
0.0437

■ 35.7813, 61.4866,  
5.9859

■ 66.0314, 7.1049,  
1.5327

■ 35.2214, 62.2189,  
8.0213

■ 72.0711, -1.0845,  
3.3321

■ 78.3960, -9.0983,  
5.3782

■ 84.9682, -16.9433,  
7.6225

■ 91.7571, -24.6364,  
10.0286

■ 94.5088, -26.2234,  
7.9324

# Harmonies

## Analogous

The Analogous color harmony consists of three colors that are next to each other on the color wheel.



45.8532, 31.3575, -23.7873



45.8520, 40.5240, -1.6398



45.8532, 36.7308, 14.4756

# Triad

The Triadic color harmony groups three colors that are evenly spaced from another and form a triangle on the color wheel.



45.8532, 40.5213, -1.6387



45.8532, -16.3498, 24.4855



45.8532, -22.4606, -35.9155

# Complementary

The Complementary color scheme is a pair of colors which are on the opposite of each other on the color wheel.



45.8520, 40.5240, -1.6398



66.2620, -36.3273, 14.3742

# Split Complementary

Split-complementary colors differ from the complementary color scheme. The scheme consists of three colors, the original color and two neighbors of the complement color.



45.8532, -31.7286, -13.9612



45.8520, 40.5240, -1.6398



45.8532, -28.6295, 18.8930

# Square

The Square scheme is like the rectangle color scheme, but the four colors are evenly spaced on the color wheel.



45.8532, 40.5213, -1.6387



45.8532, 1.7838, 25.5325



45.8532, -33.7845, 6.2781



45.8532, -6.5338, -48.2105



# Rectangle

The Rectangle color scheme consists of four colors that form a rectangle on the color wheel.



45.8520, 40.5240, -1.6398



45.8532, 27.6335, 20.7573



45.8532, -33.7845, 6.2781



45.8532, -26.3443, -29.0732

# Sweetspot

The Sweet Spot groups the original color and five complimentary colors.



45.8532, 40.5213, -1.6387



86.7668, 12.5584, 1.4801



42.2315, 36.2205, -46.6627



39.3931, 6.8951, 0.4848

0.0000, NaN, NaN



46.2646, -2.4686, 2.5136



# Same Dimension

The Same Dimension uses a secret algorithm to generate beautiful new colors.



45.8532, 40.5213, -1.6387



56.1556, 66.0233, -0.9711



45.7205, 32.6622, 15.9078



31.8584, 1.6911, 1.0487



28.2625, 49.9819, 6.0039



5.9913, 10.8134, -0.4165



# Inverse Universe

The Inverse Universe completely reimagines the original color for something new.



45.8532, 40.5213, -1.6387



56.1556, 66.0233, -0.9711



65.8505, -26.1781, -6.9032



31.8584, 1.6911, 1.0487



28.2625, 49.9819, 6.0039



5.9913, 10.8134, -0.4165



# Previews

## White Background



This preview shows how the HunterLab color 45.8520, 40.5240, -1.6398 looks on a white background.

## Color Contrast Check

Large Text (above 18pt) WCAG AA ✓ Pass

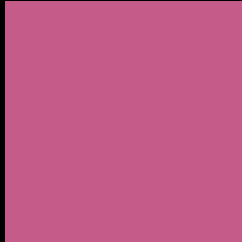
Any Text WCAG AA × Fail

Large Text (above 18pt) WCAG AAA × Fail

Any Text WCAG AAA × Fail



# Black Background



This preview shows how the HunterLab color 45.8520, 40.5240, -1.6398 looks on a black background.

## Color Contrast Check

Large Text (above 18pt) WCAG AA ✓ Pass

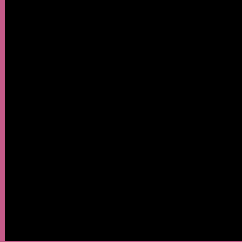
Any Text WCAG AA ✓ Pass

Large Text (above 18pt) WCAG AAA ✓ Pass

Any Text WCAG AAA × Fail

If you want to check with other color combinations, try the [Color Contrast Checker](#).

## HunterLab 45.8520, 40.5240, -1.6398 Background



This preview shows how black text looks on a background with the HunterLab color 45.8520, 40.5240, -1.6398.



This preview shows how white text looks on a background with the HunterLab color 45.8520, 40.5240,

-1.6398.

# Color Blindness Simulation

Color vision deficiency is a very complex topic, and I could not describe the different causes any better than Wikipedia does, so if you want to learn more, you should check out their [article about color blindness](#).

## Dichromacy



### Original Color

45.8520, 40.5240, -1.6398

### Protanopia

46.2404, 1.7421, -14.1199

### Deuteranopia

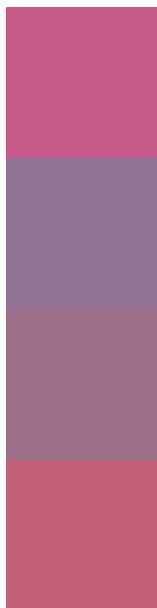
45.9894, 3.2170, 0.2515



## Tritanopia

45.9046, 31.8841, 11.9288

# Trichromacy



## Original Color

45.8520, 40.5240, -1.6398

## Protanomaly

45.0337, 14.7553, -11.1019

## Deuteranomaly

45.1212, 16.3306, -1.5473

## Tritanomaly

45.7326, 35.0817, 7.3731

# Monochromacy



## Original Color

45.8520, 40.5240, -1.6398

## Achromatopsia

46.4608, -2.4790, 2.5243

## Achromatomaly

45.4670, 12.1594, 0.2285

# CSS Examples

## Text

The CSS property to change the color of the text to HunterLab 45.8520, 40.5240, -1.6398 is called "color". The color property can be set on classes, ids or directly on the HTML element.

This example shows how text in the color `rgb(196, 91, 137)` looks like.

```
.text, #text, p{  
    color:rgb(196, 91, 137)  
}
```

If you want to add a text shadow in that color use the text-shadow property, you can generate a text shadow directly with our [CSS Text Shadow Generator](#).

Here you see how black text with a 4 pixel rgb(196, 91, 137) colored shadow looks like.

```
.shadow{ text-shadow: 4px 4px 2px rgb(196, 91, 137) }
```

## Border

The CSS property to change the border of an element to HunterLab 45.8520, 40.5240, -1.6398 is called "border". The border property can be set on classes, ids or directly on the HTML element.

This example shows the color as border, it can be applied via the CSS property "border" or "border-color".

```
.border, #border, table{ border:4px solid rgb(196, 91, 137) }
```



If only the border color should be changed use the property `border-color`.

```
.border{ border-color:rgb(196, 91, 137) }
```

If you want to add a box shadow in that color use:

Here you see how a box with a 4 pixel `rgb(196, 91, 137)` colored shadow looks like.

```
.boxshadow{ -moz-box-shadow:4px 4px 4px  
4px rgb(196, 91, 137); -webkit-box-  
shadow:4px 4px 4px 4px rgb(196, 91, 137);  
box-shadow:4px 4px 4px 4px rgb(196, 91,  
137) }
```

# Background

The CSS property to change the background color of an element to HunterLab 45.8520, 40.5240, -1.6398 is called "background". The background property can be set on classes, ids or directly on the HTML element.

```
.background, #background, body{  
background: rgb(196, 91, 137) }
```

If only the background color should be changed can be used:

```
.background{ background-color: rgb(196, 91,  
137) }
```

This example shows the color as background, it is applied via the CSS property "background".

To optimize and compress your CSS code, you can use our [online CSS compressor and optimizer](#) based on csstidy. If you want to create a linear or radial gradient as background or border, check our [CSS Gradient Generator](#).

Hey! You found this booklet interesting? Support Converting Colors with the new Membership Option!

The pro membership hides all ads, plus gives you double the colors in the color bucket, and more awesome pro features!

**[Learn more, Memberships starting at \\$2.50/m!](#)**

**Follow me  
on Twitter!**

@ConvertingColor