

Converting Colors

HunterLab(46.0674, 8.1011,
16.9234)

Have a look what the booklet for
HunterLab(46.0674, 8.1011,
16.9234) contains.

HunterLab(46.0674, 8.1011, 16.9234)	3
<i>Conversions</i>	4
<i>Details</i>	6
<i>Harmonies</i>	12
<i>Previews</i>	24
<i>Color Blindness Simulation</i>	28
<i>CSS Examples</i>	31

Color

**HunterLab(46.0674, 8.1011,
16.9234)**

Conversions

Conversions Part 1

Format	Color
Hex	A17657
RGB	161, 118, 87
RGB Percent	63%, 46%, 34%
CMY	0.3686, 0.5372, 0.6588
CMYK	0.00, 0.27, 0.46, 0.37
HSL	25°, 30%, 49%
HSV	25°, 46%, 63%
XYZ	22.8967, 21.2221, 11.9063
YIQ	127.3230, 35.5790, -0.5250

Conversions

Conversions Part 2

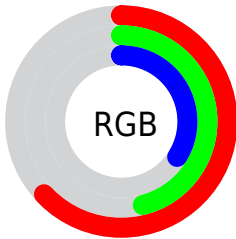
Format	Color
R_{YB}	161, 140, 87
Decimal	10581591
CIE _{Lab}	53.19, 12.87, 23.66
CIE _{LCh}	53, 26.931, 61.457
Yxy	21.2231, 0.4087, 0.3788
Android (android.graphics.Color)	4288771671 (0xFFA17657)
YUV	127.3230, -19.8792, 29.5347
Hunter-Lab	46.0674, 8.1011, 16.9234

Details

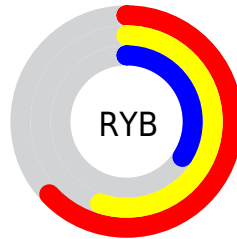
The HunterLab color $46.0674, 8.1011, 16.9234$ is a dark color, and the websafe version is hex 996633 . A complement of this color would be $45.3474, -7.1439, -16.2673$, and the grayscale version is $46.2617, -2.4684, 2.5135$.

A 20% lighter version of the original color is $67.3107, 8.1848, 20.7731$, and $27.6879, 7.3359, 12.6974$ is the 20% darker color. If you saturate the color by 10%, you get $43.4665, 11.2540, 18.8722$, and if you desaturate by 10%, it is $48.8160, 5.2079, 14.5537$.

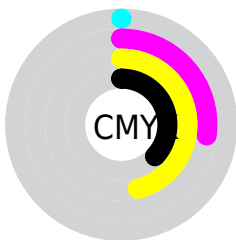
Distribution



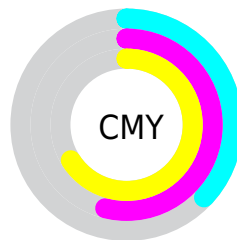
- Red (63%)
- Green (46%)
- Blue (34%)



- Red (63%)
- Yellow (55%)
- Blue (34%)



- Cyan (0%)
- Magenta (27%)
- Yellow (46%)
- Black (37%)



- Cyan (37%)
- Magenta (54%)
- Yellow (66%)

Brightness & Saturation Gradients

These gradients show how the HunterLab color 46.0674, 8.1011, 16.9234 changes by changing the brightness by 10 percent. The first figure shows a shift by +10% for each color and the second figure -10%.

Similar to the brightness gradients but the following saturation gradients show a change of the HunterLab color 46.0674, 8.1011, 16.9234 by changing the saturation by 10% instead.

■ 46.0674, 8.1011,
16.9234

■ 46.0674, 8.1011,
16.9234

160.7674, 7.0482,
33.3414

■ 36.4516, 7.8902,
14.8485

■ 67.4229, 8.2739,
20.8262

■ 27.6163, 7.5835,
12.6474

■ 79.0739, 8.2579,
22.6932

■ 19.6391, 7.1598,
10.2672

■ 91.3280, 8.1817,
24.5217

■ 12.6248, 6.5919,
8.8374

■ 104.1569, 8.0504,
26.3208

■ 5.9453, 9.1140,
4.1617

■ 117.5359, 7.8682,
28.0974

0.0000, NaN, NaN

0.0000, NaN, NaN

131.4432, 7.6385,

29.8570

0.0000, NaN, NaN

145.8595, 7.3643,
31.6038

0.0000, NaN, NaN

■ 46.0674, 8.1011,
16.9234

■ 46.0674, 8.1011,
16.9234

■ 43.4665, 11.2540,
18.8722

■ 48.8160, 5.2079,
14.5537

■ 41.0252, 14.6711,
20.3488

■ 51.6950, 2.5724,
11.8096

■ 38.7606, 18.3335,
21.3085

■ 54.6933, 0.1784,
8.7361

■ 36.6890, 22.2022,
21.7199

■ 57.7998, -1.9912,
5.3725

■ 34.8242, 26.2030,
21.5994

■ 61.0046, -3.9546,
1.7533

■ 34.1255, 27.8009,
21.5147

■ 64.2994, -5.7299,
-2.0920

■ 67.6766, -7.3346,
-6.1382

■ 71.1297, -8.7847,
-10.3638

■ 74.6529, -10.0951,
-14.7505

Harmonies

Analogous

The Analogous color harmony consists of three colors that are next to each other on the color wheel.



46.0685, 17.0275, 11.8288



46.0674, 8.1011, 16.9234



46.0685, -2.9976, 18.4402

Triad

The Triadic color harmony groups three colors that are evenly spaced from another and form a triangle on the color wheel.



46.0685, 8.0991, 16.9240



46.0685, -21.7734, 1.9927



46.0685, 9.1174, -18.1943

Complementary

The Complementary color scheme is a pair of colors which are on the opposite of each other on the color wheel.



46.0674, 8.1011, 16.9234



45.3474, -7.1439, -16.2673

Split Complementary

Split-complementary colors differ from the complementary color scheme. The scheme consists of three colors, the original color and two neighbors of the complement color.



46.0685, -1.9211, -22.5126



46.0674, 8.1011, 16.9234



46.0685, -19.1662, -9.2900

Square

The Square scheme is like the rectangle color scheme, but the four colors are evenly spaced on the color wheel.



46.0685, 8.0991, 16.9240



46.0685, -19.6236, 11.1307



46.0685, -12.1472, -18.9261



46.0685, 17.6532, -8.1917

Rectangle

The Rectangle color scheme consists of four colors that form a rectangle on the color wheel.



46.0674, 8.1011, 16.9234



46.0685, -9.9526, 17.5903



46.0685, -12.1472, -18.9261



46.0685, 5.5431, -20.4518

Sweetspot

The Sweet Spot groups the original color and five complimentary colors.



46.0685, 8.0991, 16.9240



73.8900, -0.2751, 10.9523



40.0123, 28.7777, -6.2222



34.2136, 0.1595, 5.5423



89.8524, -4.7943, 4.8819



37.4146, -1.9963, 2.0328

Same Dimension

The Same Dimension uses a secret algorithm to generate beautiful new colors.



46.0685, 8.0991, 16.9240



58.1453, 15.0920, 25.2721



56.2605, -9.2641, 25.0026



27.4788, -0.6273, 3.1553



30.6237, 24.5269, 19.2996



5.3806, 1.4599, 3.3410

Inverse Universe

The Inverse Universe completely reimagines the original color for something new.



45.3474, -7.1439, -16.2673



56.9681, -9.2126, -27.9055



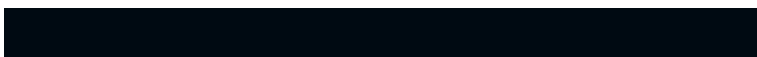
35.2955, 10.5155, -34.7073



27.4069, -2.2008, -0.2474



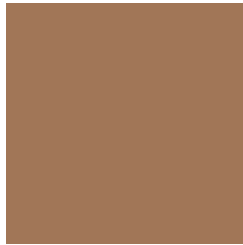
29.0970, 0.2646, -36.9399



5.1803, -1.4661, -3.3100

Previews

White Background



This preview shows how the HunterLab color 46.0674, 8.1011, 16.9234 looks on a white background.

Color Contrast Check

Large Text (above 18pt) WCAG AA ✓ Pass

Any Text WCAG AA × Fail

Large Text (above 18pt) WCAG AAA × Fail

Any Text WCAG AAA × Fail

Black Background



This preview shows how the HunterLab color 46.0674, 8.1011, 16.9234 looks on a black background.

Color Contrast Check

Large Text (above 18pt) WCAG AA ✓ Pass

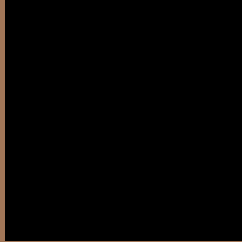
Any Text WCAG AA ✓ Pass

Large Text (above 18pt) WCAG AAA ✓ Pass

Any Text WCAG AAA × Fail

If you want to check with other color combinations, try the [Color Contrast Checker](#).

HunterLab 46.0674, 8.1011, 16.9234 Background



This preview shows how black text looks on a background with the HunterLab color 46.0674, 8.1011, 16.9234.



This preview shows how white text looks on a background with the HunterLab color 46.0674, 8.1011,

Color Blindness Simulation

Color vision deficiency is a very complex topic, and I could not describe the different causes any better than Wikipedia does, so if you want to learn more, you should check out their [article about color blindness](#).

Dichromacy



Original Color

46.0674, 8.1011, 16.9234

Protanopia

46.1004, -4.0327, 15.6070

Deuteranopia

46.1155, 2.8596, 17.1469



Tritanopia

45.9433, 15.6722, 4.8233

Trichromacy



Original Color

46.0674, 8.1011, 16.9234

Protanomaly

46.1134, 0.2309, 15.9821

Deuteranomaly

46.1684, 4.3975, 17.2194

Tritanomaly

45.9914, 12.6445, 9.9096

Monochromacy



Original Color

46.0674, 8.1011, 16.9234

Achromatopsia

46.0685, -2.4581, 2.5030

Achromatomaly

45.9066, 0.4621, 8.4972

CSS Examples

Text

The CSS property to change the color of the text to HunterLab 46.0674, 8.1011, 16.9234 is called "color". The color property can be set on classes, ids or directly on the HTML element.

This example shows how text in the color `rgb(161, 118, 87)` looks like.

```
.text, #text, p{  
    color:rgb(161, 118, 87)  
}
```

If you want to add a text shadow in that color use the text-shadow property, you can generate a text shadow directly with our [CSS Text Shadow Generator](#).

Here you see how black text with a 4 pixel rgb(161, 118, 87) colored shadow looks like.

```
.shadow{ text-shadow: 4px 4px 2px rgb(161, 118, 87) }
```

Border

The CSS property to change the border of an element to HunterLab 46.0674, 8.1011, 16.9234 is called "border". The border property can be set on classes, ids or directly on the HTML element.

This example shows the color as border, it can be applied via the CSS property "border" or "border-color".

```
.border, #border, table{ border:4px solid rgb(161, 118, 87) }
```


If only the border color should be changed use the property `border-color`.

```
.border{ border-color:rgb(161, 118, 87) }
```

If you want to add a box shadow in that color use:

Here you see how a box with a 4 pixel `rgb(161, 118, 87)` colored shadow looks like.

```
.boxshadow{ -moz-box-shadow:4px 4px 4px  
4px rgb(161, 118, 87); -webkit-box-  
shadow:4px 4px 4px 4px rgb(161, 118, 87);  
box-shadow:4px 4px 4px 4px rgb(161, 118,  
87) }
```

Background

The CSS property to change the background color of an element to HunterLab 46.0674, 8.1011, 16.9234 is called "background". The background property can be set on classes, ids or directly on the HTML element.

```
.background, #background, body{  
background: rgb(161, 118, 87) }
```

If only the background color should be changed can be used:

```
.background{ background-color: rgb(161,  
118, 87) }
```

This example shows the color as background, it is applied via the CSS property "background".

To optimize and compress your CSS code, you can use our [online CSS compressor and optimizer](#) based on csstidy. If you want to create a linear or radial gradient as background or border, check our [CSS Gradient Generator](#).

Hey! You found this booklet interesting? Support Converting Colors with the new Membership Option!

The pro membership hides all ads, plus gives you double the colors in the color bucket, and more awesome pro features!

[Learn more, Memberships starting at \\$2.50/m!](#)

**Follow me
on Twitter!**

@ConvertingColor