

Converting Colors

HunterLab(46.4004, 6.8004,
18.3200)

Have a look what the booklet for
HunterLab(46.4004, 6.8004,
18.3200) contains.

HunterLab(46.5129, 6.7750, 18.3480)	3
<i>Conversions</i>	4
<i>Details</i>	6
<i>Harmonies</i>	12
<i>Previews</i>	24
<i>Color Blindness Simulation</i>	28
<i>CSS Examples</i>	31

Color

**HunterLab(46.5129, 6.7750,
18.3480)**

Conversions

Conversions Part 1

Format	Color
Hex	A17853
RGB	161, 120, 83
RGB Percent	63%, 47%, 33%
CMY	0.3686, 0.5294, 0.6745
CMYK	0.00, 0.25, 0.48, 0.37
HSL	28°, 32%, 48%
HSV	28°, 48%, 63%
XYZ	22.9757, 21.6345, 11.1485
YIQ	128.0410, 36.3130, -2.8150

Conversions

Conversions Part 2

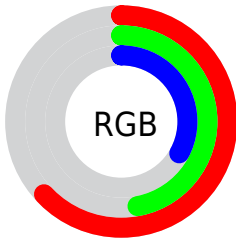
Format	Color
R_{YB}	161, 153, 83
Decimal	10582099
CIE _{Lab}	53.64, 11.31, 26.50
CIE _{LCh}	54, 28.810, 66.894
Yxy	21.6355, 0.4121, 0.3880
Android (android.graphics.Color)	4288772179 (0xFFA17853)
YUV	128.0410, -22.2052, 28.9050
Hunter-Lab	46.5129, 6.7750, 18.3480

Details

The HunterLab color $46.5129, 6.7750, 18.3480$ is a dark color, and the websafe version is hex 996633 . A complement of this color would be $43.3897, -5.1421, -19.4275$, and the grayscale version is $46.5521, -2.4839, 2.5293$.

A 20% lighter version of the original color is $67.8999, 7.0971, 22.5873$, and $28.0964, 6.1967, 13.7279$ is the 20% darker color. If you saturate the color by 10%, you get $44.1233, 9.5671, 20.2414$, and if you desaturate by 10%, it is $49.0307, 4.2459, 15.9818$.

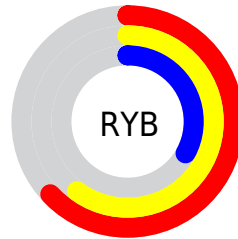
Distribution



Red (63%)

Green (47%)

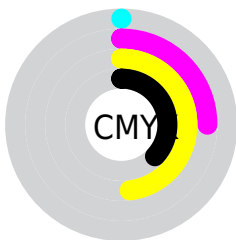
Blue (33%)



Red (63%)

Yellow (60%)

Blue (33%)

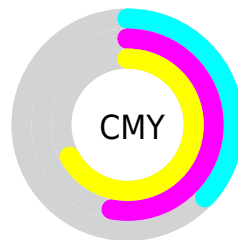


Cyan (0%)

Magenta (25%)

Yellow (48%)

Black (37%)



Cyan (37%)

Magenta (53%)

Yellow (67%)

Brightness & Saturation Gradients

These gradients show how the HunterLab color 46.5129, 6.7750, 18.3480 changes by changing the brightness by 10 percent. The first figure shows a shift by +10% for each color and the second figure -10%.

Similar to the brightness gradients but the following saturation gradients show a change of the HunterLab color 46.5129, 6.7750, 18.3480 by changing the saturation by 10% instead.

■ 46.5129, 6.7750,
18.3480

■ 46.5129, 6.7750,
18.3480

161.4426, 5.1015,
36.0851

■ 36.8637, 6.6515,
16.0714

■ 67.9286, 6.7878,
22.6079

■ 27.9922, 6.4383,
13.6485

■ 79.6070, 6.6978,
24.6354

■ 19.9748, 6.1158,
11.0228

■ 91.8873, 6.5509,
26.6148

■ 12.9149, 5.6577,
9.0404

■ 104.7412, 6.3518,
28.5566

■ 6.3464, 7.4238,
4.4425

■ 118.1442, 6.1043,
30.4689

0.0000, NaN, NaN

0.0000, NaN, NaN

132.0746, 5.8117,

32.3579

0.0000, NaN, NaN

146.5131, 5.4766,
34.2286

0.0000, NaN, NaN

■ 46.5129, 6.7750,
18.3480

■ 46.5129, 6.7750,
18.3480

■ 44.1233, 9.5671,
20.2414

■ 49.0307, 4.2459,
15.9818

■ 41.8697, 12.6287,
21.6184

■ 51.6628, 1.9776,
13.1850

■ 39.7648, 15.9462,
22.4457

■ 54.4005, -0.0450,
10.0011

■ 37.8196, 19.4904,
22.7074

■ 57.2352, -1.8378,
6.4699

■ 36.0388, 23.1851,
22.4946

■ 60.1589, -3.4175,
2.6275

■ 35.7748, 23.7559,
22.4601

■ 63.1645, -4.8013,
-1.4940

■ 66.2456, -6.0053,
-5.8665

■ 69.3967, -7.0452,
-10.4650

■ 72.6128, -7.9352,
-15.2682

Harmonies

Analogous

The Analogous color harmony consists of three colors that are next to each other on the color wheel.



46.5140, 17.1190, 13.7292



46.5129, 6.7750, 18.3480



46.5140, -5.1807, 19.2853

Triad

The Triadic color harmony groups three colors that are evenly spaced from another and form a triangle on the color wheel.



46.5140, 6.7729, 18.3486



46.5140, -22.9619, -0.1383



46.5140, 11.9584, -18.2850

Complementary

The Complementary color scheme is a pair of colors which are on the opposite of each other on the color wheel.



46.5129, 6.7750, 18.3480



43.3897, -5.1421, -19.4275

Split Complementary

Split-complementary colors differ from the complementary color scheme. The scheme consists of three colors, the original color and two neighbors of the complement color.



46.5140, 0.2748, -24.4457



46.5129, 6.7750, 18.3480



46.5140, -19.2978, -12.4041

Square

The Square scheme is like the rectangle color scheme, but the four colors are evenly spaced on the color wheel.



46.5140, 6.7729, 18.3486



46.5140, -21.5939, 10.2409



46.5140, -11.0699, -22.0609



46.5140, 20.3154, -6.7747

Rectangle

The Rectangle color scheme consists of four colors that form a rectangle on the color wheel.



46.5129, 6.7750, 18.3480



46.5140, -12.3233, 17.9786



46.5140, -11.0699, -22.0609



46.5140, 8.2471, -21.1659

Sweetspot

The Sweet Spot groups the original color and five complimentary colors.



46.5140, 6.7729, 18.3486



73.9888, -0.8517, 11.9364



39.0310, 29.8723, -4.6960



34.3027, -0.1696, 6.0149



89.8524, -4.7943, 4.8819



37.4146, -1.9963, 2.0328

Same Dimension

The Same Dimension uses a secret algorithm to generate beautiful new colors.



46.5140, 6.7729, 18.3486



58.8487, 13.0559, 27.2280



57.2642, -11.2045, 26.6164



27.5939, -0.8217, 3.2802



32.0972, 20.9318, 20.1446



5.5766, 1.0782, 3.4552

Inverse Universe

The Inverse Universe completely reimagines the original color for something new.



43.3897, -5.1421, -19.4275



53.8423, -5.7521, -33.4198



33.1727, 13.4946, -39.5875



27.2895, -2.0085, -0.3900



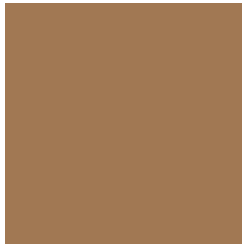
26.9789, 4.0605, -42.4867



4.9684, -1.1575, -3.7114

Previews

White Background



This preview shows how the HunterLab color 46.5129, 6.7750, 18.3480 looks on a white background.

Color Contrast Check

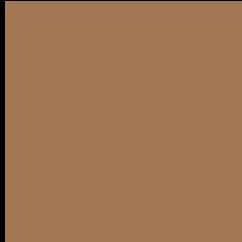
Large Text (above 18pt) WCAG AA ✓ Pass

Any Text WCAG AA × Fail

Large Text (above 18pt) WCAG AAA × Fail

Any Text WCAG AAA × Fail

Black Background



This preview shows how the HunterLab color 46.5129, 6.7750, 18.3480 looks on a black background.

Color Contrast Check

Large Text (above 18pt) WCAG AA ✓ Pass

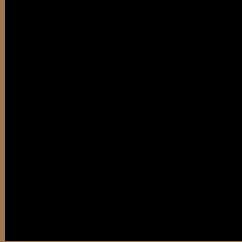
Any Text WCAG AA ✓ Pass

Large Text (above 18pt) WCAG AAA ✓ Pass

Any Text WCAG AAA × Fail

If you want to check with other color combinations, try the [Color Contrast Checker](#).

HunterLab 46.5129, 6.7750, 18.3480 Background



This preview shows how black text looks on a background with the HunterLab color 46.5129, 6.7750, 18.3480.



This preview shows how white text looks on a background with the HunterLab color 46.5129, 6.7750,

Color Blindness Simulation

Color vision deficiency is a very complex topic, and I could not describe the different causes any better than Wikipedia does, so if you want to learn more, you should check out their [article about color blindness](#).

Dichromacy



Original Color

46.5129, 6.7750, 18.3480

Protanopia

46.4749, -4.3375, 17.3299

Deuteranopia

46.6301, 3.0861, 18.6374



Tritanopia

46.6005, 15.3050, 4.7216

Trichromacy



Original Color

46.5129, 6.7750, 18.3480

Protanomaly

46.3963, -0.3776, 17.5998

Deuteranomaly

46.5794, 4.2775, 18.6159

Tritanomaly

46.6039, 12.0194, 10.5212

Monochromacy



Original Color

46.5129, 6.7750, 18.3480

Achromatopsia

46.4608, -2.4790, 2.5243

Achromatomaly

46.2737, 0.3116, 8.8779

CSS Examples

Text

The CSS property to change the color of the text to HunterLab 46.5129, 6.7750, 18.3480 is called "color". The color property can be set on classes, ids or directly on the HTML element.

This example shows how text in the color `rgb(161, 120, 83)` looks like.

```
.text, #text, p{  
    color:rgb(161, 120, 83)  
}
```

If you want to add a text shadow in that color use the text-shadow property, you can generate a text shadow directly with our [CSS Text Shadow Generator](#).

Here you see how black text with a 4 pixel rgb(161, 120, 83) colored shadow looks like.

```
.shadow{ text-shadow: 4px 4px 2px rgb(161, 120, 83) }
```

Border

The CSS property to change the border of an element to HunterLab 46.5129, 6.7750, 18.3480 is called "border". The border property can be set on classes, ids or directly on the HTML element.

This example shows the color as border, it can be applied via the CSS property "border" or "border-color".

```
.border, #border, table{ border:4px solid rgb(161, 120, 83) }
```


If only the border color should be changed use the property `border-color`.

```
.border{ border-color:rgb(161, 120, 83) }
```

If you want to add a box shadow in that color use:

Here you see how a box with a 4 pixel `rgb(161, 120, 83)` colored shadow looks like.

```
.boxshadow{ -moz-box-shadow:4px 4px 4px  
4px rgb(161, 120, 83); -webkit-box-  
shadow:4px 4px 4px 4px rgb(161, 120, 83);  
box-shadow:4px 4px 4px 4px rgb(161, 120,  
83) }
```

Background

The CSS property to change the background color of an element to HunterLab 46.5129, 6.7750, 18.3480 is called "background". The background property can be set on classes, ids or directly on the HTML element.

```
.background, #background, body{  
background: rgb(161, 120, 83) }
```

If only the background color should be changed can be used:

```
.background{ background-color: rgb(161,  
120, 83) }
```

This example shows the color as background, it is applied via the CSS property "background".

To optimize and compress your CSS code, you can use our [online CSS compressor and optimizer](#) based on csstidy. If you want to create a linear or radial gradient as background or border, check our [CSS Gradient Generator](#).

Hey! You found this booklet interesting? Support Converting Colors with the new Membership Option!

The pro membership hides all ads, plus gives you double the colors in the color bucket, and more awesome pro features!

[Learn more, Memberships starting at \\$2.50/m!](#)

**Follow me
on Twitter!**

@ConvertingColor