

Converting Colors

HunterLab(46.5963, 11.8548,
22.8047)

Have a look what the booklet for
HunterLab(46.5963, 11.8548,
22.8047) contains.

HunterLab(46.6317, 11.8112, 22.7739)	3
<i>Conversions</i>	4
<i>Details</i>	6
<i>Harmonies</i>	12
<i>Previews</i>	24
<i>Color Blindness Simulation</i>	28
<i>CSS Examples</i>	31

Color

**HunterLab(46.6317, 11.8112,
22.7739)**

Conversions

Conversions Part 1

Format	Color
Hex	AD7440
RGB	173, 116, 64
RGB Percent	68%, 45%, 25%
CMY	0.3216, 0.5451, 0.7490
CMYK	0.00, 0.33, 0.63, 0.32
HSL	29°, 46%, 46%
HSV	29°, 63%, 68%
XYZ	24.4044, 21.7452, 7.7614
YIQ	127.1150, 50.6640, -4.0880

Conversions

Conversions Part 2

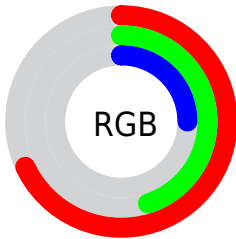
Format	Color
RYB	173, 163, 64
Decimal	11367488
CIELab	53.76, 17.12, 37.34
CIELCh	54, 41.081, 65.369
Yxy	21.7462, 0.4527, 0.4034
Android (android.graphics.Color)	4289557568 (0xFFAD7440)
YUV	127.1150, -31.1157, 40.2411
Hunter-Lab	46.6317, 11.8112, 22.7739

Details

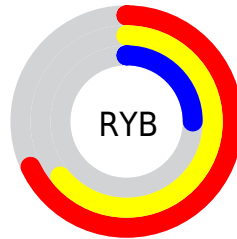
The HunterLab color **46.6317, 11.8112, 22.7739** is a dark color, and the websafe version is hex **996633**. A complement of this color would be **42.1674, -3.9714, -29.6747**, and the grayscale version is **46.2186, -2.4661, 2.5111**.

A 20% lighter version of the original color is **67.9606, 12.2329, 28.4616**, and **28.2075, 10.7819, 16.4554** is the 20% darker color. If you saturate the color by 10%, you get **44.2649, 15.2606, 23.9830**, and if you desaturate by 10%, it is **49.1558, 8.6459, 20.9798**.

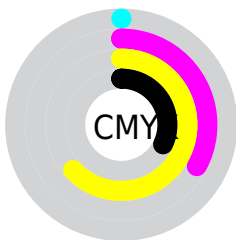
Distribution



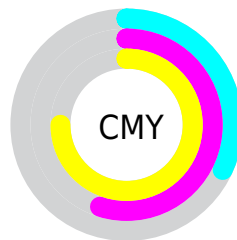
- Red (68%)
- Green (45%)
- Blue (25%)



- Red (68%)
- Yellow (64%)
- Blue (25%)



- Cyan (0%)
- Magenta (33%)
- Yellow (63%)
- Black (32%)



- Cyan (32%)
- Magenta (55%)
- Yellow (75%)

Brightness & Saturation Gradients

These gradients show how the HunterLab color 46.6317, 11.8112, 22.7739 changes by changing the brightness by 10 percent. The first figure shows a shift by +10% for each color and the second figure -10%.

Similar to the brightness gradients but the following saturation gradients show a change of the HunterLab color 46.6317, 11.8112, 22.7739 by changing the saturation by 10% instead.

■ 46.6317, 11.8112,
22.7739

■ 46.6317, 11.8112,
22.7739

■ 161.6225, 12.3335,
45.7408

■ 36.9737, 11.3842,
19.6961

■ 68.0634, 12.3839,
28.4552

■ 28.0925, 10.8495,
16.3989

■ 79.7492, 12.5549,
31.1209

■ 20.0645, 10.1849,
13.2979

■ 92.0364, 12.6582,
33.6996

■ 12.9924, 9.3640,
9.0947

■ 104.8970, 12.6997,
36.2072

■ 6.4490, 11.2241,
4.5143

■ 118.3063, 12.6842,
38.6562

0.0000, NaN, NaN

0.0000, NaN, NaN

■ 132.2428, 12.6158,

41.0563

0.0000, NaN, NaN

146.6873, 12.4979,
43.4157

0.0000, NaN, NaN

■ 46.6317, 11.8112,
22.7739

■ 46.6317, 11.8112,
22.7739

■ 44.2649, 15.2606,
23.9830

■ 49.1558, 8.6459,
20.9798

■ 42.0641, 18.9804,
24.5767

■ 51.8213, 5.7772,
18.6416

■ 40.0419, 22.9248,
24.5551

■ 54.6175, 3.1971,
15.8072

■ 38.7303, 25.7417,
24.3161

■ 57.5336, 0.8933,
12.5247

■ 60.5594, -1.1505,
8.8394

■ 63.6859, -2.9523,
4.7930

■ 66.9050, -4.5308,
0.4229

■ 70.2094, -5.9043,
-4.2378

■ 73.5928, -7.0903,
-9.1601

Harmonies

Analogous

The Analogous color harmony consists of three colors that are next to each other on the color wheel.



46.6329, 27.0084, 17.0970



46.6317, 11.8112, 22.7739



46.6329, -5.4865, 23.9908

Triad

The Triadic color harmony groups three colors that are evenly spaced from another and form a triangle on the color wheel.



46.6329, 11.8088, 22.7744



46.6329, -30.5844, -0.4415



46.6329, 17.8040, -30.2736

Complementary

The Complementary color scheme is a pair of colors which are on the opposite of each other on the color wheel.



46.6317, 11.8112, 22.7739



42.1674, -3.9714, -29.6747

Split Complementary

Split-complementary colors differ from the complementary color scheme. The scheme consists of three colors, the original color and two neighbors of the complement color.



46.6329, 0.5827, -39.8034



46.6317, 11.8112, 22.7739



46.6329, -26.0976, -19.0812

Square

The Square scheme is like the rectangle color scheme, but the four colors are evenly spaced on the color wheel.



46.6329, 11.8088, 22.7744



46.6329, -28.4593, 13.6517



46.6329, -15.2510, -35.1111



46.6329, 30.8000, -12.2354

Rectangle

The Rectangle color scheme consists of four colors that form a rectangle on the color wheel.



46.6317, 11.8112, 22.7739



46.6329, -15.5873, 22.6943



46.6329, -15.2510, -35.1111



46.6329, 12.2325, -34.8229

Sweetspot

The Sweet Spot groups the original color and five complimentary colors.



46.6329, 11.8088, 22.7744



78.4663, 0.1517, 15.0095



37.3625, 42.5306, -5.5201



36.0614, 0.4356, 7.6161



93.2148, -4.9737, 5.0645



40.3295, -2.1519, 2.1912

Same Dimension

The Same Dimension uses a secret algorithm to generate beautiful new colors.



46.6329, 11.8088, 22.7744



57.9367, 22.5335, 32.5414



61.4547, -13.3934, 32.9538



29.3633, -0.8776, 3.5130



33.3664, 21.6607, 20.9394



6.4789, 1.6468, 4.0211

Inverse Universe

The Inverse Universe completely reimagines the original color for something new.



42.1674, -3.9714, -29.6747



50.8317, -1.6930, -51.2951



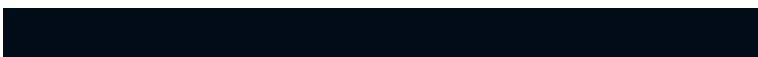
28.6310, 22.8540, -63.8280



29.0243, -2.1314, -0.4409



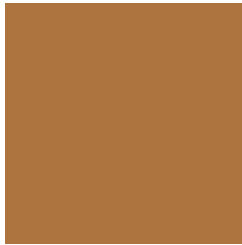
27.8585, 4.5157, -44.5688



5.6975, -1.0220, -4.9153

Previews

White Background



This preview shows how the HunterLab color 46.6317, 11.8112, 22.7739 looks on a white background.

Color Contrast Check

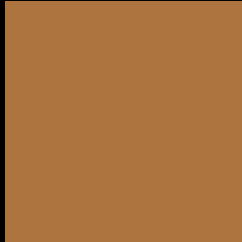
Large Text (above 18pt) WCAG AA ✓ Pass

Any Text WCAG AA × Fail

Large Text (above 18pt) WCAG AAA × Fail

Any Text WCAG AAA × Fail

Black Background



This preview shows how the HunterLab color 46.6317, 11.8112, 22.7739 looks on a black background.

Color Contrast Check

Large Text (above 18pt) WCAG AA ✓ Pass

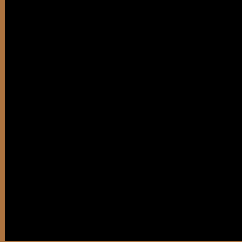
Any Text WCAG AA ✓ Pass

Large Text (above 18pt) WCAG AAA ✓ Pass

Any Text WCAG AAA × Fail

If you want to check with other color combinations, try the [Color Contrast Checker](#).

HunterLab 46.6317, 11.8112, 22.7739 Background



This preview shows how black text looks on a background with the HunterLab color 46.6317, 11.8112, 22.7739.



This preview shows how white text looks on a background with the HunterLab color 46.6317, 11.8112,

22.7739.

Color Blindness Simulation

Color vision deficiency is a very complex topic, and I could not describe the different causes any better than Wikipedia does, so if you want to learn more, you should check out their [article about color blindness](#).

Dichromacy



Original Color

46.6317, 11.8112, 22.7739

Protanopia

46.7639, -5.3091, 21.7891

Deuteranopia

46.7810, 3.0334, 23.1033



Tritanopia

46.6979, 21.3981, 7.3885

Trichromacy



Original Color

46.6317, 11.8112, 22.7739

Protanomaly

46.4681, 0.7228, 21.8707

Deuteranomaly

46.5664, 6.3799, 22.8182

Tritanomaly

46.5836, 17.7355, 14.3079

Monochromacy



Original Color

46.6317, 11.8112, 22.7739

Achromatopsia

46.0685, -2.4581, 2.5030

Achromatomaly

45.9290, 1.5631, 11.4219

CSS Examples

Text

The CSS property to change the color of the text to HunterLab 46.6317, 11.8112, 22.7739 is called "color". The color property can be set on classes, ids or directly on the HTML element.

This example shows how text in the color `rgb(173, 116, 64)` looks like.

```
.text, #text, p{  
    color:rgb(173, 116, 64)  
}
```

If you want to add a text shadow in that color use the text-shadow property, you can generate a text shadow directly with our [CSS Text Shadow Generator](#).

Here you see how black text with a 4 pixel rgb(173, 116, 64) colored shadow looks like.

```
.shadow{ text-shadow: 4px 4px 2px rgb(173, 116, 64) }
```

Border

The CSS property to change the border of an element to HunterLab 46.6317, 11.8112, 22.7739 is called "border". The border property can be set on classes, ids or directly on the HTML element.

This example shows the color as border, it can be applied via the CSS property "border" or "border-color".

```
.border, #border, table{ border:4px solid rgb(173, 116, 64) }
```


If only the border color should be changed use the property `border-color`.

```
.border{ border-color:rgb(173, 116, 64) }
```

If you want to add a box shadow in that color use:

Here you see how a box with a 4 pixel `rgb(173, 116, 64)` colored shadow looks like.

```
.boxshadow{ -moz-box-shadow:4px 4px 4px  
4px rgb(173, 116, 64); -webkit-box-  
shadow:4px 4px 4px 4px rgb(173, 116, 64);  
box-shadow:4px 4px 4px 4px rgb(173, 116,  
64) }
```

Background

The CSS property to change the background color of an element to HunterLab 46.6317, 11.8112, 22.7739 is called "background". The background property can be set on classes, ids or directly on the HTML element.

```
.background, #background, body{  
background: rgb(173, 116, 64) }
```

If only the background color should be changed can be used:

```
.background{ background-color: rgb(173,  
116, 64) }
```

This example shows the color as background, it is applied via the CSS property "background".

To optimize and compress your CSS code, you can use our [online CSS compressor and optimizer](#) based on csstidy. If you want to create a linear or radial gradient as background or border, check our [CSS Gradient Generator](#).

Hey! You found this booklet interesting? Support Converting Colors with the new Membership Option!

The pro membership hides all ads, plus gives you double the colors in the color bucket, and more awesome pro features!

[Learn more, Memberships starting at \\$2.50/m!](#)

**Follow me
on Twitter!**

@ConvertingColor