

Converting Colors

HunterLab(46.8771, 19.6874,
9.9680)

Have a look what the booklet for
HunterLab(46.8771, 19.6874,
9.9680) contains.

HunterLab(47.0163, 19.6601, 9.9844)	3
<i>Conversions</i>	4
<i>Details</i>	6
<i>Harmonies</i>	12
<i>Previews</i>	24
<i>Color Blindness Simulation</i>	28
<i>CSS Examples</i>	31

Color

**HunterLab(47.0163, 19.6601,
9.9844)**

Conversions

Conversions Part 1

Format	Color
Hex	B17070
RGB	177, 112, 112
RGB Percent	69%, 44%, 44%
CMY	0.3059, 0.5608, 0.5608
CMYK	0.00, 0.37, 0.37, 0.31
HSL	0°, 29%, 57%
HSV	0°, 37%, 69%
XYZ	26.8503, 22.1053, 18.1809
YIQ	131.4350, 38.7400, 13.7800

Conversions

Conversions Part 2

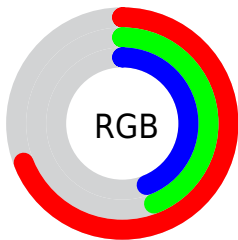
Format	Color
R_{YB}	177, 112, 112
Decimal	11628656
CIE Lab	54.14, 25.75, 10.80
CIE LCh	54, 27.923, 22.748
Yxy	22.1064, 0.3999, 0.3293
Android (android.graphics.Color)	4289818736 (0xFFB17070)
YUV	131.4350, -9.5815, 39.9605
Hunter-Lab	47.0163, 19.6601, 9.9844

Details

The HunterLab color **47.0163, 19.6601, 9.9844** is a dark color, and the websafe version is hex **996666**. A complement of this color would be **61.6944, -20.1842, -2.3116**, and the grayscale version is **47.8393, -2.5526, 2.5992**.

A 20% lighter version of the original color is **68.3547, 21.1533, 12.0259**, and **28.3950, 17.7544, 7.6796** is the 20% darker color. If you saturate the color by 10%, you get **42.6856, 26.4789, 11.9587**, and if you desaturate by 10%, it is **51.8048, 12.9998, 8.0992**.

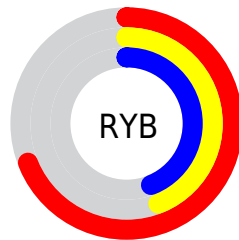
Distribution



Red (69%)

Green (44%)

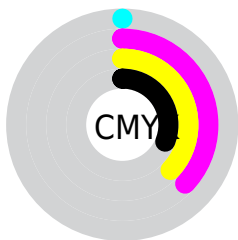
Blue (44%)



Red (69%)

Yellow (44%)

Blue (44%)

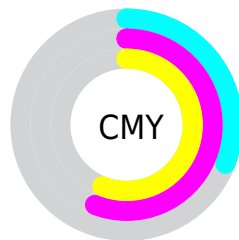


Cyan (0%)

Magenta (37%)

Yellow (37%)

Black (31%)



Cyan (31%)

Magenta (56%)

Yellow (56%)

Brightness & Saturation Gradients

These gradients show how the HunterLab color 47.0163, 19.6601, 9.9844 changes by changing the brightness by 10 percent. The first figure shows a shift by +10% for each color and the second figure -10%.

Similar to the brightness gradients but the following saturation gradients show a change of the HunterLab color 47.0163, 19.6601, 9.9844 by changing the saturation by 10% instead.

■ 47.0163, 19.6601,
9.9844

■ 47.0163, 19.6601,
9.9844

162.2040, 23.2996,
20.6399

■ 37.3298, 18.8179,
8.8036

■ 68.4995, 21.0144,
12.3199

■ 28.4175, 17.8514,
7.5981

■ 80.2089, 21.5536,
13.4857

■ 20.3552, 16.7418,
6.3488

■ 92.5186, 22.0119,
14.6558

■ 13.2441, 15.4781,
5.0201

■ 105.4006, 22.3963,
15.8328

■ 6.7697, 16.7455,
4.7388

118.8305, 22.7126,
17.0184

0.0000, INF, NaN

0.0000, NaN, NaN

132.7868, 22.9658,

18.2142

0.0000, NaN, NaN

147.2504, 23.1603,
19.4211

0.0000, NaN, NaN

■ 47.0163, 19.6601,
9.9844

■ 47.0163, 19.6601,
9.9844

■ 42.6856, 26.4789,
11.9587

■ 51.8048, 12.9998,
8.0992

■ 38.8976, 33.2695,
13.9611

■ 56.9730, 6.5893,
6.3235

■ 35.7496, 39.6840,
15.8835

■ 62.4615, 0.4467,
4.6607

■ 33.3302, 45.2233,
17.5651

■ 68.2221, -5.4410,
3.1029

■ 31.6927, 49.3411,
18.8265

■ 74.2166, -11.1006,
1.6384

■ 30.7993, 51.7334,
19.5634

■ 80.4149, -16.5635,
0.2546

■ 30.5734, 52.3560,
19.7558

■ 86.7925, -21.8599,
-1.0606

■ 93.3301, -27.0174,
-2.3177

■ 93.8547, -27.4221,
-2.4129

Harmonies

Analogous

The Analogous color harmony consists of three colors that are next to each other on the color wheel.



47.0174, 21.4851, -0.1730



47.0163, 19.6601, 9.9844



47.0174, 11.6300, 16.4079

Triad

The Triadic color harmony groups three colors that are evenly spaced from another and form a triangle on the color wheel.



47.0174, 19.6578, 9.9852



47.0174, -18.8430, 13.5906



47.0174, -5.2690, -23.4407

Complementary

The Complementary color scheme is a pair of colors which are on the opposite of each other on the color wheel.



47.0163, 19.6601, 9.9844



61.6944, -20.1842, -2.3116

Split Complementary

Split-complementary colors differ from the complementary color scheme. The scheme consists of three colors, the original color and two neighbors of the complement color.



47.0174, -15.1565, -17.4413



47.0163, 19.6601, 9.9844



47.0174, -22.4897, 5.1368

Square

The Square scheme is like the rectangle color scheme, but the four colors are evenly spaced on the color wheel.



47.0174, 19.6578, 9.9852



47.0174, -10.7563, 18.1137



47.0174, -21.2079, -6.3185



47.0174, 6.3443, -21.2531

Rectangle

The Rectangle color scheme consists of four colors that form a rectangle on the color wheel.



47.0163, 19.6601, 9.9844



47.0174, 4.2251, 18.5367



47.0174, -21.2079, -6.3185



47.0174, -8.8885, -22.2740

Sweetspot

The Sweet Spot groups the original color and five complimentary colors.



47.0174, 19.6578, 9.9852



80.2621, 4.2246, 7.2127



49.1019, 29.8978, -19.4457



36.9150, 2.4698, 3.4939



94.3401, -5.0338, 5.1257



41.3092, -2.2042, 2.2444

Same Dimension

The Same Dimension uses a secret algorithm to generate beautiful new colors.



47.0174, 19.6578, 9.9852



58.2139, 33.6291, 15.4770



55.3313, 3.5171, 17.7301



29.1639, 0.9661, 2.4301



26.0240, 44.5650, 16.8161



4.6165, 7.9040, 2.9830

Inverse Universe

The Inverse Universe completely reimagines the original color for something new.



61.6944, -20.1842, -2.3116



81.6255, -30.5525, -4.3485



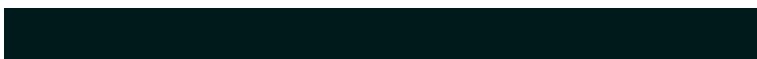
51.6891, -5.2714, -15.9533



31.0346, -4.0261, 0.8916



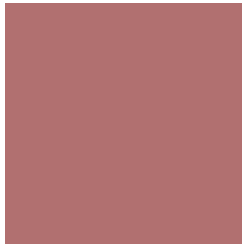
50.0794, -26.5477, -5.2859



8.8833, -4.7093, -0.9374

Previews

White Background



This preview shows how the HunterLab color 47.0163, 19.6601, 9.9844 looks on a white background.

Color Contrast Check

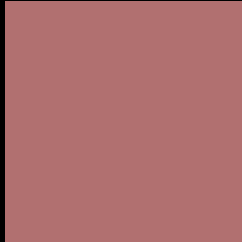
Large Text (above 18pt) WCAG AA ✓ Pass

Any Text WCAG AA × Fail

Large Text (above 18pt) WCAG AAA × Fail

Any Text WCAG AAA × Fail

Black Background



This preview shows how the HunterLab color 47.0163, 19.6601, 9.9844 looks on a black background.

Color Contrast Check

Large Text (above 18pt) WCAG AA ✓ Pass

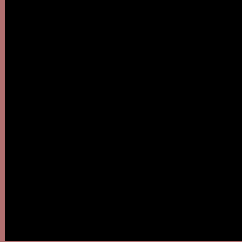
Any Text WCAG AA ✓ Pass

Large Text (above 18pt) WCAG AAA ✓ Pass

Any Text WCAG AAA × Fail

If you want to check with other color combinations, try the [Color Contrast Checker](#).

HunterLab 47.0163, 19.6601, 9.9844 Background



This preview shows how black text looks on a background with the HunterLab color 47.0163, 19.6601, 9.9844.



This preview shows how white text looks on a background with the HunterLab color 47.0163, 19.6601,

Color Blindness Simulation

Color vision deficiency is a very complex topic, and I could not describe the different causes any better than Wikipedia does, so if you want to learn more, you should check out their [article about color blindness](#).

Dichromacy



Original Color

47.0163, 19.6601, 9.9844

Protanopia

47.0631, -2.2076, 6.1727

Deuteranopia

47.1986, 3.3489, 10.6112



Tritanopia

47.0805, 21.3954, 7.4066

Trichromacy



Original Color

47.0163, 19.6601, 9.9844

Protanomaly

46.8593, 5.3453, 7.2818

Deuteranomaly

46.9619, 9.3546, 10.1147

Tritanomaly

47.0051, 21.0202, 8.4910

Monochromacy



Original Color

47.0163, 19.6601, 9.9844

Achromatopsia

47.6409, -2.5420, 2.5884

Achromatomaly

47.0812, 5.0299, 5.0857

CSS Examples

Text

The CSS property to change the color of the text to HunterLab 47.0163, 19.6601, 9.9844 is called "color". The color property can be set on classes, ids or directly on the HTML element.

This example shows how text in the color `rgb(177, 112, 112)` looks like.

```
.text, #text, p{  
    color:rgb(177, 112, 112)  
}
```

If you want to add a text shadow in that color use the text-shadow property, you can generate a text shadow directly with our [CSS Text Shadow Generator](#).

Here you see how black text with a 4 pixel rgb(177, 112, 112) colored shadow looks like.

```
.shadow{ text-shadow: 4px 4px 2px rgb(177, 112, 112) }
```

Border

The CSS property to change the border of an element to HunterLab 47.0163, 19.6601, 9.9844 is called "border". The border property can be set on classes, ids or directly on the HTML element.

This example shows the color as border, it can be applied via the CSS property "border" or "border-color".

```
.border, #border, table{ border:4px solid rgb(177, 112, 112) }
```


If only the border color should be changed use the property `border-color`.

```
.border{ border-color:rgb(177, 112, 112) }
```

If you want to add a box shadow in that color use:

Here you see how a box with a 4 pixel `rgb(177, 112, 112)` colored shadow looks like.

```
.boxshadow{ -moz-box-shadow:4px 4px 4px  
4px rgb(177, 112, 112); -webkit-box-  
shadow:4px 4px 4px 4px rgb(177, 112, 112);  
box-shadow:4px 4px 4px 4px rgb(177, 112,  
112) }
```

Background

The CSS property to change the background color of an element to HunterLab 47.0163, 19.6601, 9.9844 is called "background". The background property can be set on classes, ids or directly on the HTML element.

```
.background, #background, body{  
background: rgb(177, 112, 112) }
```

If only the background color should be changed can be used:

```
.background{ background-color: rgb(177,  
112, 112) }
```

This example shows the color as background, it is applied via the CSS property "background".

To optimize and compress your CSS code, you can use our [online CSS compressor and optimizer](#) based on csstidy. If you want to create a linear or radial gradient as background or border, check our [CSS Gradient Generator](#).

Hey! You found this booklet interesting? Support Converting Colors with the new Membership Option!

The pro membership hides all ads, plus gives you double the colors in the color bucket, and more awesome pro features!

[Learn more, Memberships starting at \\$2.50/m!](#)

**Follow me
on Twitter!**

@ConvertingColor