

# Converting Colors

HunterLab(46.9090, 72.4820,  
16.8892)

Have a look what the booklet for  
HunterLab(46.9090, 72.4820,  
16.8892) contains.

<b>HunterLab(46.8491, 72.4774, 16.7352)</b> .....	3
<b><i>Conversions</i></b> .....	4
<b><i>Details</i></b> .....	6
<b><i>Harmonies</i></b> .....	12
<b><i>Previews</i></b> .....	24
<b><i>Color Blindness Simulation</i></b> .....	28
<b><i>CSS Examples</i></b> .....	31

# Color

**HunterLab(46.8491, 72.4774,  
16.7352)**

# Conversions

## Conversions Part 1

<b>Format</b>	<b>Color</b>
Hex	F52B5E
RGB	245, 43, 94
RGB Percent	96%, 17%, 37%
CMY	0.0392, 0.8313, 0.6314
CMYK	0.00, 0.82, 0.62, 0.04
HSL	345°, 91%, 56%
HSV	345°, 82%, 96%
XYZ	40.5404, 21.9484, 12.6895
YIQ	109.2120, 104.0210, 58.6850

# Conversions

## Conversions Part 2

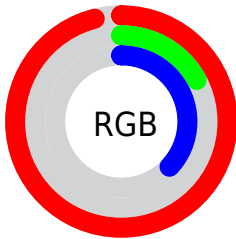
<b>Format</b>	<b>Color</b>
<b>R<sub>YB</sub></b>	245, 43, 94
Decimal	16067422
CIE <sub>Lab</sub>	53.97, 74.77, 22.95
CIE <sub>LCh</sub>	54, 78.209, 17.065
Yxy	21.9497, 0.5392, 0.2920
Android (android.graphics.Color)	4294257502 (0xFFFF52B5E)
YUV	109.2120, -7.4995, 119.0861
Hunter-Lab	46.8491, 72.4774, 16.7352

# Details

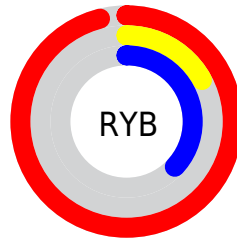
The HunterLab color **46.8491, 72.4774, 16.7352** is a dark color, and the websafe version is hex **FF3366**. The color can be described as dark washed red. A complement of this color would be **83.4951, -53.3573, 14.2646**, and the grayscale version is **39.1903, -2.0911, 2.1293**.

A 20% lighter version of the original color is **58.8579, 54.5747, 10.6441**, and **31.6946, 54.9777, 15.0569** is the 20% darker color. If you saturate the color by 10%, you get **45.1436, 75.8960, 20.2412**, and if you desaturate by 10%, it is **49.6645, 66.3274, 13.3535**.

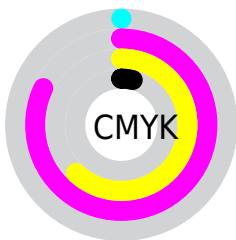
# Distribution



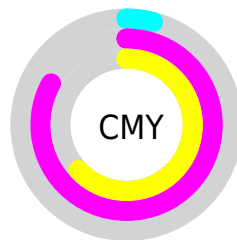
- Red (96%)
- Green (17%)
- Blue (37%)



- Red (96%)
- Yellow (17%)
- Blue (37%)



- Cyan (0%)
- Magenta (82%)
- Yellow (62%)
- Black (4%)



- Cyan (4%)
- Magenta (83%)
- Yellow (63%)

# Brightness & Saturation Gradients

These gradients show how the HunterLab color 46.8491, 72.4774, 16.7352 changes by changing the brightness by 10 percent. The first figure shows a shift by +10% for each color and the second figure -10%.

Similar to the brightness gradients but the following saturation gradients show a change of the HunterLab color 46.8491, 72.4774, 16.7352 by changing the saturation by 10% instead.



■ 46.8491, 72.4774,  
16.7352

■ 46.8491, 72.4774,  
16.7352

161.9517, 90.7680,  
32.8039

■ 37.1752, 70.0921,  
14.7196

■ 68.3102, 77.1323,  
20.5389

■ 28.2764, 67.7888,  
12.5861

■ 80.0094, 79.3495,  
22.3626

■ 20.2289, 65.7878,  
10.2854

■ 92.3093, 81.4769,  
24.1511

■ 13.1347, 64.6929,  
8.8343

■ 105.1820, 83.5124,  
25.9128

■ 6.6325, 73.5701,  
4.6428

■ 118.6030, 85.4566,  
27.6544

0.0000, INF, NaN

0.0000, INF, NaN

132.5508, 87.3118,

29.3809

0.0000, NaN, NaN

147.0061, 89.0812,  
31.0963

0.0000, NaN, NaN

■ 46.8491, 72.4774,  
16.7352

■ 46.8491, 72.4774,  
16.7352

■ 45.1436, 75.8960,  
20.2412

■ 49.6645, 66.3274,  
13.3535


■ 44.4504, 76.9012,  
22.6883

■ 53.5712, 58.0457,  
10.4058


■ 58.4735, 48.4183,  
8.0698


■ 64.2399, 38.1363,  
6.3913

■ 70.7373, 27.6738,  
5.3314

 77.8475, 17.3032,  
4.8130

 85.4717, 7.1546,  
4.7505

 93.5304, -2.7274,  
5.0654

 99.0719, -8.5795,  
4.2790

# Harmonies

## Analogous

The Analogous color harmony consists of three colors that are next to each other on the color wheel.



46.8505, 74.2757, -12.6189



46.8491, 72.4774, 16.7352



46.8505, 47.4936, 28.4091

# Triad

The Triadic color harmony groups three colors that are evenly spaced from another and form a triangle on the color wheel.



46.8505, 72.4723, 16.7363



46.8505, -39.7221, 27.5284



46.8505, -15.5552, -98.6267

# Complementary

The Complementary color scheme is a pair of colors which are on the opposite of each other on the color wheel.



46.8491, 72.4774, 16.7352



83.4951, -53.3573, 14.2646

# Split Complementary

Split-complementary colors differ from the complementary color scheme. The scheme consists of three colors, the original color and two neighbors of the complement color.



46.8505, -37.6196, -64.1868



46.8491, 72.4774, 16.7352



46.8505, -48.8195, 13.8983

# Square

The Square scheme is like the rectangle color scheme, but the four colors are evenly spaced on the color wheel.



46.8505, 72.4723, 16.7363



46.8505, -19.3024, 31.1321



46.8505, -48.1711, -18.2037



46.8505, 17.0595, -95.7262



# Rectangle

The Rectangle color scheme consists of four colors that form a rectangle on the color wheel.



46.8491, 72.4774, 16.7352



46.8505, 24.1096, 30.8161



46.8505, -48.1711, -18.2037



46.8505, -24.2448, -90.3976

# Sweetspot

The Sweet Spot groups the original color and five complimentary colors.



46.8505, 72.4723, 16.7363



79.4685, 20.9241, 5.1289



44.0636, 80.3357, -87.6786



35.5471, 11.4472, 2.4554

0.0000, NaN, NaN



46.2646, -2.4686, 2.5136



# Same Dimension

The Same Dimension uses a secret algorithm to generate beautiful new colors.



46.8505, 72.4723, 16.7363



46.5960, 80.3428, 23.5072



51.8886, 52.8555, 30.2852



40.6831, 1.9486, 2.2273



32.6543, 56.5496, 16.2312



9.7626, 17.0663, 3.6141



# Inverse Universe

The Inverse Universe completely reimagines the original color for something new.



46.8505, 72.4723, 16.7363



46.5960, 80.3428, 23.5072



68.8735, -22.9692, -32.3279



40.6831, 1.9486, 2.2273



32.6543, 56.5496, 16.2312



9.7626, 17.0663, 3.6141



# Previews

## White Background



This preview shows how the HunterLab color 46.8491, 72.4774, 16.7352 looks on a white background.

## Color Contrast Check

Large Text (above 18pt) WCAG AA ✓ Pass

Any Text WCAG AA × Fail

Large Text (above 18pt) WCAG AAA × Fail

Any Text WCAG AAA × Fail



# Black Background



This preview shows how the HunterLab color 46.8491, 72.4774, 16.7352 looks on a black background.

## Color Contrast Check

Large Text (above 18pt) WCAG AA ✓ Pass

Any Text WCAG AA ✓ Pass

Large Text (above 18pt) WCAG AAA ✓ Pass

Any Text WCAG AAA × Fail

If you want to check with other color combinations, try the [Color Contrast Checker](#).

## HunterLab 46.8491, 72.4774, 16.7352 Background



This preview shows how black text looks on a background with the HunterLab color 46.8491, 72.4774, 16.7352.



This preview shows how white text looks on a background with the HunterLab color 46.8491, 72.4774,



# Color Blindness Simulation

Color vision deficiency is a very complex topic, and I could not describe the different causes any better than Wikipedia does, so if you want to learn more, you should check out their [article about color blindness](#).

## Dichromacy



### Original Color

46.8491, 72.4774, 16.7352

### Protanopia

47.0792, -1.6032, 1.9399

### Deuteranopia

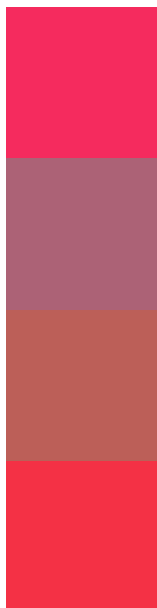
47.0354, 3.1448, 18.4653



## Tritanopia

46.7624, 66.6578, 25.5567

# Trichromacy



## Original Color

46.8491, 72.4774, 16.7352

## Protanomaly

43.3751, 25.5386, 3.7464

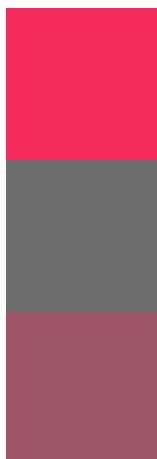
## Deuteranomaly

44.2497, 29.8360, 15.4182

## Tritanomaly

46.7540, 68.9120, 22.8762

# Monochromacy



## Original Color

46.8491, 72.4774, 16.7352

## Achromatopsia

39.1058, -2.0866, 2.1247

## Achromatomaly

38.4260, 24.9531, 3.9070

# CSS Examples

## Text

The CSS property to change the color of the text to HunterLab 46.8491, 72.4774, 16.7352 is called "color". The color property can be set on classes, ids or directly on the HTML element.

This example shows how text in the color `rgb(245, 43, 94)` looks like.

```
.text, #text, p{  
    color:rgb(245, 43, 94)  
}
```

If you want to add a text shadow in that color use the text-shadow property, you can generate a text shadow directly with our [CSS Text Shadow Generator](#).

Here you see how black text with a 4 pixel rgb(245, 43, 94) colored shadow looks like.

```
.shadow{ text-shadow: 4px 4px 2px rgb(245, 43, 94) }
```

## Border

The CSS property to change the border of an element to HunterLab 46.8491, 72.4774, 16.7352 is called "border". The border property can be set on classes, ids or directly on the HTML element.

This example shows the color as border, it can be applied via the CSS property "border" or "border-color".

```
.border, #border, table{ border:4px solid rgb(245, 43, 94) }
```



If only the border color should be changed use the property `border-color`.

```
.border{ border-color:rgb(245, 43, 94) }
```

If you want to add a box shadow in that color use:

Here you see how a box with a 4 pixel `rgb(245, 43, 94)` colored shadow looks like.

```
.boxshadow{ -moz-box-shadow:4px 4px 4px  
4px rgb(245, 43, 94); -webkit-box-  
shadow:4px 4px 4px 4px rgb(245, 43, 94);  
box-shadow:4px 4px 4px 4px rgb(245, 43,  
94) }
```

# Background

The CSS property to change the background color of an element to HunterLab 46.8491, 72.4774, 16.7352 is called "background". The background property can be set on classes, ids or directly on the HTML element.

```
.background, #background, body{  
background: rgb(245, 43, 94) }
```

If only the background color should be changed can be used:

```
.background{ background-color: rgb(245, 43,  
94) }
```

This example shows the color as background, it is applied via the CSS property "background".

To optimize and compress your CSS code, you can use our [online CSS compressor and optimizer](#) based on csstidy. If you want to create a linear or radial gradient as background or border, check our [CSS Gradient Generator](#).

Hey! You found this booklet interesting? Support Converting Colors with the new Membership Option!

The pro membership hides all ads, plus gives you double the colors in the color bucket, and more awesome pro features!

**[Learn more, Memberships starting at \\$2.50/m!](#)**

**Follow me  
on Twitter!**

@ConvertingColor