

Converting Colors

HunterLab(46.9739, 11.1721,
16.6812)

Have a look what the booklet for
HunterLab(46.9739, 11.1721,
16.6812) contains.

HunterLab(46.9436, 11.0661, 16.6195)	3
<i>Conversions</i>	4
<i>Details</i>	6
<i>Harmonies</i>	12
<i>Previews</i>	24
<i>Color Blindness Simulation</i>	28
<i>CSS Examples</i>	31

Color

**HunterLab(46.9436, 11.0661,
16.6195)**

Conversions

Conversions Part 1

Format	Color
Hex	A8765B
RGB	168, 118, 91
RGB Percent	66%, 46%, 36%
CMY	0.3412, 0.5372, 0.6431
CMYK	0.00, 0.30, 0.46, 0.34
HSL	21°, 31%, 51%
HSV	21°, 46%, 66%
XYZ	24.5152, 22.0370, 12.8590
YIQ	129.8720, 38.4670, 2.2030

Conversions

Conversions Part 2

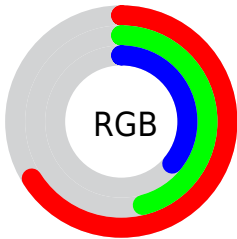
Format	Color
R_{YB}	168, 133, 91
Decimal	11040347
CIE _{Lab}	54.07, 16.26, 22.68
CIE _{LCh}	54, 27.908, 54.358
Yxy	22.0381, 0.4126, 0.3709
Android (android.graphics.Color)	4289230427 (0xFFA8765B)
YUV	129.8720, -19.1639, 33.4383
Hunter-Lab	46.9436, 11.0661, 16.6195

Details

The HunterLab color **46.9436, 11.0661, 16.6195** is a dark color, and the websafe version is hex **996633**. A complement of this color would be **49.0918, -9.8929, -14.6645**, and the grayscale version is **47.2599, -2.5217, 2.5677**.

A 20% lighter version of the original color is **68.3228, 11.6757, 20.4369**, and **28.3251, 10.5581, 12.4420** is the 20% darker color. If you saturate the color by 10%, you get **43.9971, 14.9345, 18.5938**, and if you desaturate by 10%, it is **50.0808, 7.4647, 14.2596**.

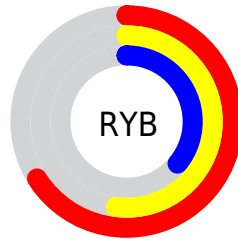
Distribution



Red (66%)

Green (46%)

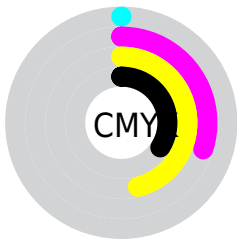
Blue (36%)



Red (66%)

Yellow (52%)

Blue (36%)

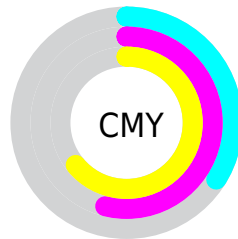


Cyan (0%)

Magenta (30%)

Yellow (46%)

Black (34%)



Cyan (34%)

Magenta (54%)

Yellow (64%)

Brightness & Saturation Gradients

These gradients show how the HunterLab color 46.9436, 11.0661, 16.6195 changes by changing the brightness by 10 percent. The first figure shows a shift by +10% for each color and the second figure -10%.

Similar to the brightness gradients but the following saturation gradients show a change of the HunterLab color 46.9436, 11.0661, 16.6195 by changing the saturation by 10% instead.

■ 46.9436, 11.0661,
16.6195

■ 46.9436, 11.0661,
16.6195

162.0941, 11.2507,
32.5597

■ 37.2624, 10.6863,
14.6239

■ 68.4171, 11.5525,
20.3874

■ 28.3560, 10.2015,
12.5132

■ 80.1220, 11.6833,
22.1954

■ 20.3002, 9.5900,
10.2386

■ 92.4275, 11.7481,
23.9693

■ 13.1964, 8.8252,
8.7430

■ 105.3054, 11.7526,
25.7173

■ 6.7103, 10.2020,
4.6972

118.7314, 11.7014,
27.4458

0.0000, NaN, NaN

0.0000, NaN, NaN

132.6840, 11.5986,

29.1599

0.0000, NaN, NaN

147.1440, 11.4474,
30.8635

0.0000, NaN, NaN

■ 46.9436, 11.0661,
16.6195

■ 46.9436, 11.0661,
16.6195

■ 43.9971, 14.9345,
18.5938

■ 50.0808, 7.4647,
14.2596

■ 41.2606, 19.0632,
20.1202

■ 53.3846, 4.1334,
11.5675

■ 38.7599, 23.4113,
21.1400

■ 56.8384, 1.0569,
8.5923

■ 36.5202, 27.9045,
21.6067

■ 60.4264, -1.7833,
5.3747

■ 34.5640, 32.4195,
21.5209

■ 64.1352, -4.4077,
1.9486

■ 33.8293, 34.2352,
21.4448

■ 67.9531, -6.8371,
-1.6580

■ 71.8704, -9.0914,
-5.4224

■ 75.8782, -11.1890,
-9.3256

■ 79.9694, -13.1466,
-13.3524

Harmonies

Analogous

The Analogous color harmony consists of three colors that are next to each other on the color wheel.



46.9447, 19.3472, 10.4186



46.9436, 11.0661, 16.6195



46.9447, -0.3168, 19.0199

Triad

The Triadic color harmony groups three colors that are evenly spaced from another and form a triangle on the color wheel.



46.9447, 11.0639, 16.6201



46.9447, -22.5210, 4.5738



46.9447, 6.9502, -20.8876

Complementary

The Complementary color scheme is a pair of colors which are on the opposite of each other on the color wheel.



46.9436, 11.0661, 16.6195



49.0918, -9.8929, -14.6645

Split Complementary

Split-complementary colors differ from the complementary color scheme. The scheme consists of three colors, the original color and two neighbors of the complement color.



46.9447, -4.6585, -23.5196



46.9436, 11.0661, 16.6195



46.9447, -20.9756, -6.9586

Square

The Square scheme is like the rectangle color scheme, but the four colors are evenly spaced on the color wheel.



46.9447, 11.0639, 16.6201



46.9447, -19.1367, 13.2208



46.9447, -14.6931, -17.9184



46.9447, 16.8169, -11.4053

Rectangle

The Rectangle color scheme consists of four colors that form a rectangle on the color wheel.



46.9436, 11.0661, 16.6195



46.9447, -7.8579, 18.6886



46.9447, -14.6931, -17.9184



46.9447, 3.0941, -22.6853

Sweetspot

The Sweet Spot groups the original color and five complimentary colors.



46.9447, 11.0639, 16.6201



77.3165, 0.8005, 10.9121



42.1091, 31.0165, -9.0180



35.6355, 0.7574, 5.5007



92.0917, -4.9138, 5.0035



39.3538, -2.0998, 2.1382

Same Dimension

The Same Dimension uses a secret algorithm to generate beautiful new colors.



46.9447, 11.0639, 16.6201



59.2003, 20.2137, 25.0894



57.4529, -7.3331, 25.0595



28.2076, -0.3945, 3.1040



29.5480, 29.3421, 18.7210



5.5521, 2.3191, 3.4618

Inverse Universe

The Inverse Universe completely reimagines the original color for something new.



49.0918, -9.8929, -14.6645



62.6176, -13.6308, -25.3066



38.2920, 8.4505, -33.6169



28.4299, -2.5194, -0.0821



32.4137, -4.2806, -31.2736



5.8831, -1.8928, -3.2675

Previews

White Background



This preview shows how the HunterLab color 46.9436, 11.0661, 16.6195 looks on a white background.

Color Contrast Check

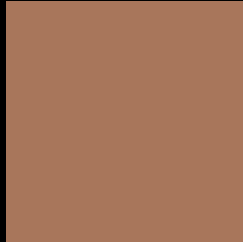
Large Text (above 18pt) WCAG AA ✓ Pass

Any Text WCAG AA × Fail

Large Text (above 18pt) WCAG AAA × Fail

Any Text WCAG AAA × Fail

Black Background



This preview shows how the HunterLab color 46.9436, 11.0661, 16.6195 looks on a black background.

Color Contrast Check

Large Text (above 18pt) WCAG AA ✓ Pass

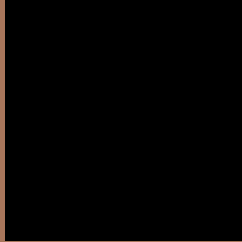
Any Text WCAG AA ✓ Pass

Large Text (above 18pt) WCAG AAA ✓ Pass

Any Text WCAG AAA × Fail

If you want to check with other color combinations, try the [Color Contrast Checker](#).

HunterLab 46.9436, 11.0661, 16.6195 Background



This preview shows how black text looks on a background with the HunterLab color 46.9436, 11.0661, 16.6195.



This preview shows how white text looks on a background with the HunterLab color 46.9436, 11.0661,

Color Blindness Simulation

Color vision deficiency is a very complex topic, and I could not describe the different causes any better than Wikipedia does, so if you want to learn more, you should check out their [article about color blindness](#).

Dichromacy



Original Color

46.9436, 11.0661, 16.6195

Protanopia

46.9404, -3.7758, 14.8806

Deuteranopia

47.0341, 3.3488, 16.8474



Tritanopia

47.0082, 17.6963, 6.0531

Trichromacy



Original Color

46.9436, 11.0661, 16.6195

Protanomaly

46.8609, 1.5345, 15.5039

Deuteranomaly

47.0434, 6.0911, 16.9036

Tritanomaly

46.8564, 15.4393, 10.1134

Monochromacy



Original Color

46.9436, 11.0661, 16.6195

Achromatopsia

47.2470, -2.5210, 2.5670

Achromatomaly

47.0234, 1.6568, 8.1713

CSS Examples

Text

The CSS property to change the color of the text to HunterLab 46.9436, 11.0661, 16.6195 is called "color". The color property can be set on classes, ids or directly on the HTML element.

This example shows how text in the color `rgb(168, 118, 91)` looks like.

```
.text, #text, p{  
    color:rgb(168, 118, 91)  
}
```

If you want to add a text shadow in that color use the text-shadow property, you can generate a text shadow directly with our [CSS Text Shadow Generator](#).

Here you see how black text with a 4 pixel rgb(168, 118, 91) colored shadow looks like.

```
.shadow{ text-shadow: 4px 4px 2px rgb(168, 118, 91) }
```

Border

The CSS property to change the border of an element to HunterLab 46.9436, 11.0661, 16.6195 is called "border". The border property can be set on classes, ids or directly on the HTML element.

This example shows the color as border, it can be applied via the CSS property "border" or "border-color".

```
.border, #border, table{ border:4px solid rgb(168, 118, 91) }
```


If only the border color should be changed use the property `border-color`.

```
.border{ border-color:rgb(168, 118, 91) }
```

If you want to add a box shadow in that color use:

Here you see how a box with a 4 pixel `rgb(168, 118, 91)` colored shadow looks like.

```
.boxshadow{ -moz-box-shadow:4px 4px 4px  
4px rgb(168, 118, 91); -webkit-box-  
shadow:4px 4px 4px 4px rgb(168, 118, 91);  
box-shadow:4px 4px 4px 4px rgb(168, 118,  
91) }
```

Background

The CSS property to change the background color of an element to HunterLab 46.9436, 11.0661, 16.6195 is called "background". The background property can be set on classes, ids or directly on the HTML element.

```
.background, #background, body{  
background: rgb(168, 118, 91) }
```

If only the background color should be changed can be used:

```
.background{ background-color: rgb(168,  
118, 91) }
```

This example shows the color as background, it is applied via the CSS property "background".

To optimize and compress your CSS code, you can use our [online CSS compressor and optimizer](#) based on csstidy. If you want to create a linear or radial gradient as background or border, check our [CSS Gradient Generator](#).

Hey! You found this booklet interesting? Support Converting Colors with the new Membership Option!

The pro membership hides all ads, plus gives you double the colors in the color bucket, and more awesome pro features!

[Learn more, Memberships starting at \\$2.50/m!](#)

**Follow me
on Twitter!**

@ConvertingColor