

Converting Colors

HunterLab(47.0258, 13.1055,
22.7080)

Have a look what the booklet for
HunterLab(47.0258, 13.1055,
22.7080) contains.

HunterLab(47.0258, 13.1055, 22.7080)	3
<i>Conversions</i>	4
<i>Details</i>	6
<i>Harmonies</i>	12
<i>Previews</i>	24
<i>Color Blindness Simulation</i>	28
<i>CSS Examples</i>	31

Color

**HunterLab(47.0258, 13.1055,
22.7080)**

Conversions

Conversions Part 1

Format	Color
Hex	B07442
RGB	176, 116, 66
RGB Percent	69%, 45%, 26%
CMY	0.3098, 0.5451, 0.7412
CMYK	0.00, 0.34, 0.62, 0.31
HSL	27°, 45%, 47%
HSV	27°, 62%, 69%
XYZ	25.1333, 22.1143, 8.0981
YIQ	128.2400, 51.8100, -2.8300

Conversions

Conversions Part 2

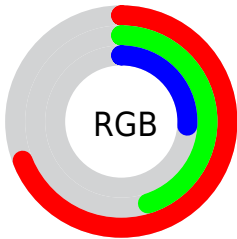
Format	Color
R_{YB}	176, 158, 66
Decimal	11564098
CIE _{Lab}	54.15, 18.56, 36.84
CIE _{LCh}	54, 41.250, 63.256
Yxy	22.1154, 0.4541, 0.3996
Android (android.graphics.Color)	4289754178 (0xFFB07442)
YUV	128.2400, -30.6843, 41.8855
Hunter-Lab	47.0258, 13.1055, 22.7080

Details

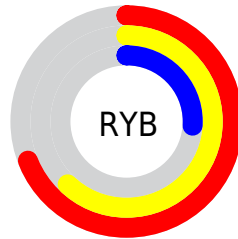
The HunterLab color **47.0258, 13.1055, 22.7080** is a dark color, and the websafe version is hex **996633**. A complement of this color would be **43.8334, -5.2663, -28.6400**, and the grayscale version is **46.6583, -2.4896, 2.5350**.

A 20% lighter version of the original color is **68.4874, 14.0026, 28.4053**, and **28.5908, 11.9643, 16.5493** is the 20% darker color. If you saturate the color by 10%, you get **44.5406, 16.8018, 23.9595**, and if you desaturate by 10%, it is **49.6836, 9.6961, 20.8727**.

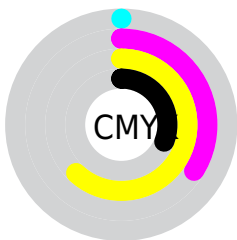
Distribution



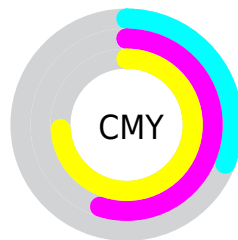
- Red (69%)
- Green (45%)
- Blue (26%)



- Red (69%)
- Yellow (62%)
- Blue (26%)



- Cyan (0%)
- Magenta (34%)
- Yellow (62%)
- Black (31%)



- Cyan (31%)
- Magenta (55%)
- Yellow (74%)

Brightness & Saturation Gradients

These gradients show how the HunterLab color 47.0258, 13.1055, 22.7080 changes by changing the brightness by 10 percent. The first figure shows a shift by +10% for each color and the second figure -10%.

Similar to the brightness gradients but the following saturation gradients show a change of the HunterLab color 47.0258, 13.1055, 22.7080 by changing the saturation by 10% instead.

47.0258, 13.1055,
22.7080

47.0258, 13.1055,
22.7080

162.2184, 14.1404,
45.4005

37.3386, 12.6098,
19.6752

68.5103, 13.8070,
28.3116

28.4256, 12.0034,
16.4282

80.2203, 14.0385,
30.9432

20.3624, 11.2641,
13.2767

92.5305, 14.2002,
33.4904

13.2503, 10.3671,
9.2752

105.4130, 14.2980,
35.9687

6.7775, 11.5965,
4.7442

118.8435, 14.3370,
38.3901

0.0000, NaN, NaN

0.0000, NaN, NaN

132.8003, 14.3215,

40.7642

0.0000, NaN, NaN

147.2643, 14.2549,
43.0989

0.0000, NaN, NaN

■ 47.0258, 13.1055,
22.7080

■ 47.0258, 13.1055,
22.7080

■ 44.5406, 16.8018,
23.9595

■ 49.6836, 9.6961,
20.8727

■ 42.2393, 20.7670,
24.5908

■ 52.4961, 6.5884,
18.4994

■ 40.1368, 24.9476,
24.5963

■ 55.4507, 3.7749,
15.6401

■ 38.6890, 28.1377,
24.3326

■ 58.5348, 1.2430,
12.3458

■ 61.7371, -1.0244,
8.6635

■ 65.0472, -3.0465,
4.6358

■ 68.4562, -4.8428,
0.3006

■ 71.9560, -6.4328,
-4.3094

■ 75.5395, -7.8347,
-9.1654

Harmonies

Analogous

The Analogous color harmony consists of three colors that are next to each other on the color wheel.



47.0270, 28.0277, 16.6068



47.0258, 13.1055, 22.7080



47.0270, -4.3522, 24.2109

Triad

The Triadic color harmony groups three colors that are evenly spaced from another and form a triangle on the color wheel.



47.0270, 13.1030, 22.7086



47.0270, -30.8741, 0.7610



47.0270, 16.7682, -31.5281

Complementary

The Complementary color scheme is a pair of colors which are on the opposite of each other on the color wheel.



47.0258, 13.1055, 22.7080



43.8334, -5.2663, -28.6400

Split Complementary

Split-complementary colors differ from the complementary color scheme. The scheme consists of three colors, the original color and two neighbors of the complement color.



47.0270, -0.6425, -40.2113



47.0258, 13.1055, 22.7080



47.0270, -26.8211, -17.8591

Square

The Square scheme is like the rectangle color scheme, but the four colors are evenly spaced on the color wheel.



47.0270, 13.1030, 22.7086



47.0270, -28.2642, 14.5024



47.0270, -16.3224, -34.4867



47.0270, 30.3459, -13.6735

Rectangle

The Rectangle color scheme consists of four colors that form a rectangle on the color wheel.



47.0258, 13.1055, 22.7080



47.0270, -14.7229, 23.0901



47.0270, -16.3224, -34.4867



47.0270, 11.0884, -35.8555

Sweetspot

The Sweet Spot groups the original color and five complimentary colors.



47.0270, 13.1030, 22.7086



80.1796, 0.6697, 15.1099



38.2701, 43.3408, -6.5026



36.7710, 0.7237, 7.6586



94.3401, -5.0338, 5.1257



41.3092, -2.2042, 2.2444

Same Dimension

The Same Dimension uses a secret algorithm to generate beautiful new colors.



47.0270, 13.1030, 22.7086



58.7717, 24.6247, 32.6912



62.0972, -12.7862, 33.1187



30.2000, -0.8134, 3.5710



33.3117, 23.6842, 20.9411



6.8282, 2.1650, 4.2454

Inverse Universe

The Inverse Universe completely reimagines the original color for something new.



43.8334, -5.2663, -28.6400



53.6482, -3.9519, -49.3408



29.7715, 22.0578, -63.0679



29.9542, -2.2849, -0.3988



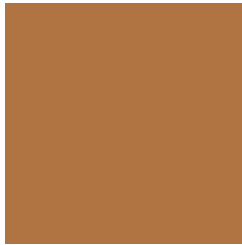
29.2494, 2.9898, -43.0134



6.1966, -1.1444, -5.2747

Previews

White Background



This preview shows how the HunterLab color 47.0258, 13.1055, 22.7080 looks on a white background.

Color Contrast Check

Large Text (above 18pt) WCAG AA ✓ Pass

Any Text WCAG AA × Fail

Large Text (above 18pt) WCAG AAA × Fail

Any Text WCAG AAA × Fail

Black Background



This preview shows how the HunterLab color 47.0258, 13.1055, 22.7080 looks on a black background.

Color Contrast Check

Large Text (above 18pt) WCAG AA ✓ Pass

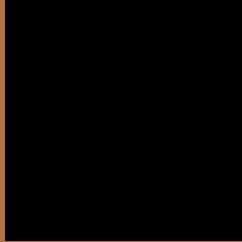
Any Text WCAG AA ✓ Pass

Large Text (above 18pt) WCAG AAA ✓ Pass

Any Text WCAG AAA × Fail

If you want to check with other color combinations, try the [Color Contrast Checker](#).

HunterLab 47.0258, 13.1055, 22.7080 Background



This preview shows how black text looks on a background with the HunterLab color 47.0258, 13.1055, 22.7080.



This preview shows how white text looks on a background with the HunterLab color 47.0258, 13.1055,

22.7080.

Color Blindness Simulation

Color vision deficiency is a very complex topic, and I could not describe the different causes any better than Wikipedia does, so if you want to learn more, you should check out their [article about color blindness](#).

Dichromacy



Original Color

47.0258, 13.1055, 22.7080

Protanopia

47.1803, -5.2048, 21.4899

Deuteranopia

47.1795, 3.0558, 23.0297



Tritanopia

47.0778, 22.5211, 7.8177

Trichromacy



Original Color

47.0258, 13.1055, 22.7080

Protanomaly

46.9739, 1.1117, 21.8581

Deuteranomaly

47.0780, 6.7815, 22.8297

Tritanomaly

46.9818, 18.9838, 14.3854

Monochromacy



Original Color

47.0258, 13.1055, 22.7080

Achromatopsia

46.4608, -2.4790, 2.5243

Achromatomaly

46.3195, 1.5423, 11.4619

CSS Examples

Text

The CSS property to change the color of the text to HunterLab 47.0258, 13.1055, 22.7080 is called "color". The color property can be set on classes, ids or directly on the HTML element.

This example shows how text in the color `rgb(176, 116, 66)` looks like.

```
.text, #text, p{  
    color:rgb(176, 116, 66)  
}
```

If you want to add a text shadow in that color use the text-shadow property, you can generate a text shadow directly with our [CSS Text Shadow Generator](#).

Here you see how black text with a 4 pixel rgb(176, 116, 66) colored shadow looks like.

```
.shadow{ text-shadow: 4px 4px 2px rgb(176, 116, 66) }
```

Border

The CSS property to change the border of an element to HunterLab 47.0258, 13.1055, 22.7080 is called "border". The border property can be set on classes, ids or directly on the HTML element.

This example shows the color as border, it can be applied via the CSS property "border" or "border-color".

```
.border, #border, table{ border:4px solid rgb(176, 116, 66) }
```


If only the border color should be changed use the property `border-color`.

```
.border{ border-color:rgb(176, 116, 66) }
```

If you want to add a box shadow in that color use:

Here you see how a box with a 4 pixel `rgb(176, 116, 66)` colored shadow looks like.

```
.boxshadow{ -moz-box-shadow:4px 4px 4px  
4px rgb(176, 116, 66); -webkit-box-  
shadow:4px 4px 4px 4px rgb(176, 116, 66);  
box-shadow:4px 4px 4px 4px rgb(176, 116,  
66) }
```

Background

The CSS property to change the background color of an element to HunterLab 47.0258, 13.1055, 22.7080 is called "background". The background property can be set on classes, ids or directly on the HTML element.

```
.background, #background, body{  
background: rgb(176, 116, 66) }
```

If only the background color should be changed can be used:

```
.background{ background-color: rgb(176,  
116, 66) }
```

This example shows the color as background, it is applied via the CSS property "background".

To optimize and compress your CSS code, you can use our [online CSS compressor and optimizer](#) based on csstidy. If you want to create a linear or radial gradient as background or border, check our [CSS Gradient Generator](#).

Hey! You found this booklet interesting? Support Converting Colors with the new Membership Option!

The pro membership hides all ads, plus gives you double the colors in the color bucket, and more awesome pro features!

[Learn more, Memberships starting at \\$2.50/m!](#)

**Follow me
on Twitter!**

@ConvertingColor