

# Converting Colors

HunterLab(47.0503, 12.2414,  
20.9169)

Have a look what the booklet for  
HunterLab(47.0503, 12.2414,  
20.9169) contains.

<b>HunterLab(47.0264, 12.0844, 20.7965)</b> .....	3
<b><i>Conversions</i></b> .....	4
<b><i>Details</i></b> .....	6
<b><i>Harmonies</i></b> .....	12
<b><i>Previews</i></b> .....	24
<b><i>Color Blindness Simulation</i></b> .....	28
<b><i>CSS Examples</i></b> .....	31

# Color

**HunterLab(47.0264, 12.0844,  
20.7965)**

# Conversions

## Conversions Part 1

<b>Format</b>	<b>Color</b>
Hex	AD754B
RGB	173, 117, 75
RGB Percent	68%, 46%, 29%
CMY	0.3216, 0.5412, 0.7059
CMYK	0.00, 0.32, 0.57, 0.32
HSL	26°, 40%, 49%
HSV	26°, 57%, 68%
XYZ	24.8649, 22.1148, 9.6147
YIQ	128.9560, 46.8580, -1.1900

# Conversions

## Conversions Part 2

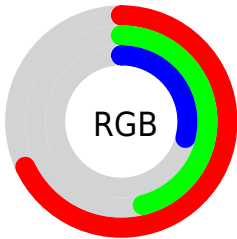
<b>Format</b>	<b>Color</b>
R <sub>Y</sub> B	173, 149, 75
Decimal	11367755
CIE Lab	54.15, 17.41, 31.89
CIE LCh	54, 36.331, 61.360
Yxy	22.1159, 0.4393, 0.3908
Android (android.graphics.Color)	4289557835 (0xFFAD754B)
YUV	128.9560, -26.6003, 38.6266
Hunter-Lab	47.0264, 12.0844, 20.7965

# Details

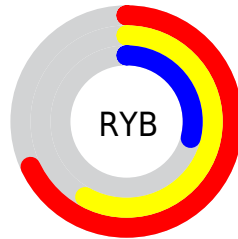
The HunterLab color **47.0264, 12.0844, 20.7965** is a dark color, and the websafe version is hex **996633**. A complement of this color would be **45.5462, -6.9662, -23.5215**, and the grayscale version is **46.9255, -2.5038, 2.5496**.

A 20% lighter version of the original color is **68.4438, 12.8251, 25.5921**, and **28.2929, 11.2118, 15.1943** is the 20% darker color. If you saturate the color by 10%, you get **44.4152, 15.7524, 22.3536**, and if you desaturate by 10%, it is **49.8121, 8.6994, 18.7122**.

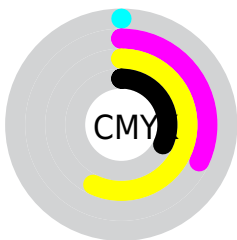
# Distribution



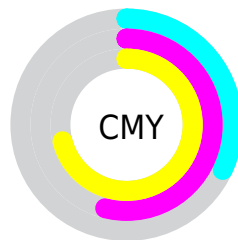
- Red (68%)
- Green (46%)
- Blue (29%)



- Red (68%)
- Yellow (58%)
- Blue (29%)



- Cyan (0%)
- Magenta (32%)
- Yellow (57%)
- Black (32%)



- Cyan (32%)
- Magenta (54%)
- Yellow (71%)

# Brightness & Saturation Gradients

These gradients show how the HunterLab color 47.0264, 12.0844, 20.7965 changes by changing the brightness by 10 percent. The first figure shows a shift by +10% for each color and the second figure -10%.

Similar to the brightness gradients but the following saturation gradients show a change of the HunterLab color 47.0264, 12.0844, 20.7965 by changing the saturation by 10% instead.



47.0264, 12.0844,  
20.7965

47.0264, 12.0844,  
20.7965

162.2193, 12.6935,  
41.0813

37.3391, 11.6466,  
18.1309

68.5110, 12.6782,  
25.7467

28.4261, 11.1010,  
15.2827

80.2210, 12.8593,  
28.0844

20.3628, 10.4255,  
12.2688

92.5313, 12.9724,  
30.3556

13.2507, 9.5943,  
9.2755

105.4138, 13.0235,  
32.5731

6.7780, 10.8370,  
4.7446

118.8443, 13.0174,  
34.7472

0.0000, NaN, NaN

0.0000, NaN, NaN

132.8011, 12.9581,

36.8859

0.0000, NaN, NaN

147.2652, 12.8492,  
38.9955

0.0000, NaN, NaN

■ 47.0264, 12.0844,  
20.7965

■ 47.0264, 12.0844,  
20.7965

■ 44.4152, 15.7524,  
22.3536

■ 49.8121, 8.6994,  
18.7122

■ 41.9917, 19.6922,  
23.3346

■ 52.7529, 5.6067,  
16.1520

■ 39.7740, 23.8588,  
23.7099

■ 55.8352, 2.7951,  
13.1691

■ 37.7756, 28.1704,  
23.5089

■ 59.0458, 0.2494,  
9.8125

■ 37.1508, 29.6025,  
23.4104

■ 62.3731, -2.0488,  
6.1259

■ 65.8065, -4.1195,  
2.1479

■ 69.3370, -5.9823,  
-2.0883

■ 72.9566, -7.6563,  
-6.5542

■ 76.6581, -9.1590,  
-11.2255

# Harmonies

## Analogous

The Analogous color harmony consists of three colors that are next to each other on the color wheel.



47.0276, 24.6525, 14.6878



47.0264, 12.0844, 20.7965



47.0276, -3.1924, 22.5193

# Triad

The Triadic color harmony groups three colors that are evenly spaced from another and form a triangle on the color wheel.



47.0276, 12.0820, 20.7971



47.0276, -27.9481, 1.9059



47.0276, 13.4105, -27.3065

# Complementary

The Complementary color scheme is a pair of colors which are on the opposite of each other on the color wheel.



47.0264, 12.0844, 20.7965



45.5462, -6.9662, -23.5215

# Split Complementary

Split-complementary colors differ from the complementary color scheme. The scheme consists of three colors, the original color and two neighbors of the complement color.



47.0276, -1.8273, -33.8263



47.0264, 12.0844, 20.7965



47.0276, -24.6366, -14.0195

# Square

The Square scheme is like the rectangle color scheme, but the four colors are evenly spaced on the color wheel.



47.0276, 12.0820, 20.7971



47.0276, -25.1846, 13.8755



47.0276, -15.5179, -28.3375



47.0276, 25.4844, -12.5317



# Rectangle

The Rectangle color scheme consists of four colors that form a rectangle on the color wheel.



47.0264, 12.0844, 20.7965



47.0276, -12.5351, 21.5759



47.0276, -15.5179, -28.3375



47.0276, 8.4284, -30.7117

# Sweetspot

The Sweet Spot groups the original color and five complimentary colors.



47.0276, 12.0820, 20.7971



78.7348, 0.5451, 13.4380



39.4804, 39.0840, -7.8612



36.3146, 0.5489, 6.6811



93.2148, -4.9737, 5.0645



40.3295, -2.1519, 2.1912



# Same Dimension

The Same Dimension uses a secret algorithm to generate beautiful new colors.



47.0276, 12.0820, 20.7971



58.5902, 22.3886, 30.3240



60.2016, -10.6833, 30.3529



29.2552, -0.6951, 3.3958



32.0134, 24.9457, 20.1632



6.2857, 2.0337, 3.9089



# Inverse Universe

The Inverse Universe completely reimagines the original color for something new.



45.5462, -6.9662, -23.5215



56.1864, -7.5783, -40.2279



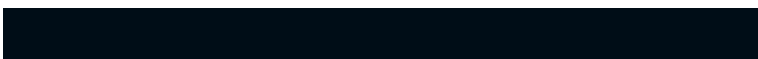
32.7494, 16.5461, -51.1050



29.1346, -2.3121, -0.3070



29.7767, 1.0411, -39.4657

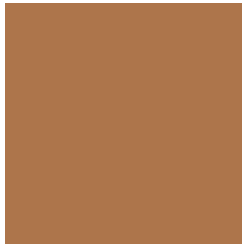


5.9364, -1.3824, -4.4359



# Previews

## White Background



This preview shows how the HunterLab color 47.0264, 12.0844, 20.7965 looks on a white background.

## Color Contrast Check

Large Text (above 18pt) WCAG AA ✓ Pass

Any Text WCAG AA × Fail

Large Text (above 18pt) WCAG AAA × Fail

Any Text WCAG AAA × Fail



# Black Background



This preview shows how the HunterLab color 47.0264, 12.0844, 20.7965 looks on a black background.

## Color Contrast Check

Large Text (above 18pt) WCAG AA ✓ Pass

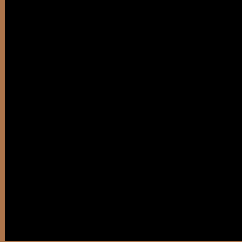
Any Text WCAG AA ✓ Pass

Large Text (above 18pt) WCAG AAA ✓ Pass

Any Text WCAG AAA × Fail

If you want to check with other color combinations, try the [Color Contrast Checker](#).

## HunterLab 47.0264, 12.0844, 20.7965 Background



This preview shows how black text looks on a background with the HunterLab color 47.0264, 12.0844, 20.7965.



This preview shows how white text looks on a background with the HunterLab color 47.0264, 12.0844,



# Color Blindness Simulation

Color vision deficiency is a very complex topic, and I could not describe the different causes any better than Wikipedia does, so if you want to learn more, you should check out their [article about color blindness](#).

## Dichromacy



### Original Color

47.0264, 12.0844, 20.7965

### Protanopia

47.2178, -4.8092, 19.4814

### Deuteranopia

47.0944, 3.0333, 20.9162



## Tritanopia

46.8562, 20.7792, 6.7518

# Trichromacy



## Original Color

47.0264, 12.0844, 20.7965

## Protanomaly

46.8931, 1.0933, 19.8012

## Deuteranomaly

46.8569, 6.2951, 20.7856

## Tritanomaly

46.8227, 17.4952, 12.5743

# Monochromacy



## Original Color

47.0264, 12.0844, 20.7965

## Achromatopsia

46.8536, -2.5000, 2.5456

## Achromatomaly

46.6809, 1.5569, 10.4159

# CSS Examples

## Text

The CSS property to change the color of the text to HunterLab 47.0264, 12.0844, 20.7965 is called "color". The color property can be set on classes, ids or directly on the HTML element.

This example shows how text in the color `rgb(173, 117, 75)` looks like.

```
.text, #text, p{  
    color:rgb(173, 117, 75)  
}
```

If you want to add a text shadow in that color use the text-shadow property, you can generate a text shadow directly with our [CSS Text Shadow Generator](#).

Here you see how black text with a 4 pixel rgb(173, 117, 75) colored shadow looks like.

```
.shadow{ text-shadow: 4px 4px 2px rgb(173, 117, 75) }
```

## Border

The CSS property to change the border of an element to HunterLab 47.0264, 12.0844, 20.7965 is called "border". The border property can be set on classes, ids or directly on the HTML element.

This example shows the color as border, it can be applied via the CSS property "border" or "border-color".

```
.border, #border, table{ border:4px solid rgb(173, 117, 75) }
```



If only the border color should be changed use the property border-color.

```
.border{ border-color:rgb(173, 117, 75) }
```

If you want to add a box shadow in that color use:

Here you see how a box with a 4 pixel rgb(173, 117, 75) colored shadow looks like.

```
.boxshadow{ -moz-box-shadow:4px 4px 4px  
4px rgb(173, 117, 75); -webkit-box-  
shadow:4px 4px 4px 4px rgb(173, 117, 75);  
box-shadow:4px 4px 4px 4px rgb(173, 117,  
75) }
```

# Background

The CSS property to change the background color of an element to HunterLab 47.0264, 12.0844, 20.7965 is called "background". The background property can be set on classes, ids or directly on the HTML element.

```
.background, #background, body{  
background: rgb(173, 117, 75) }
```

If only the background color should be changed can be used:

```
.background{ background-color: rgb(173,  
117, 75) }
```

This example shows the color as background, it is applied via the CSS property "background".

To optimize and compress your CSS code, you can use our [online CSS compressor and optimizer](#) based on csstidy. If you want to create a linear or radial gradient as background or border, check our [CSS Gradient Generator](#).

Hey! You found this booklet interesting? Support Converting Colors with the new Membership Option!

The pro membership hides all ads, plus gives you double the colors in the color bucket, and more awesome pro features!

**[Learn more, Memberships starting at \\$2.50/m!](#)**

**Follow me  
on Twitter!**

@ConvertingColor