

Converting Colors

HunterLab(47.1372, 61.9323,
8.9775)

Have a look what the booklet for
HunterLab(47.1372, 61.9323,
8.9775) contains.

HunterLab(47.0847, 62.0938, 8.9083)	3
<i>Conversions</i>	4
<i>Details</i>	6
<i>Harmonies</i>	12
<i>Previews</i>	24
<i>Color Blindness Simulation</i>	28
<i>CSS Examples</i>	31

Color

**HunterLab(47.0847, 62.0938,
8.9083)**

Conversions

Conversions Part 1

Format	Color
Hex	E74275
RGB	231, 66, 117
RGB Percent	91%, 26%, 46%
CMY	0.0941, 0.7411, 0.5412
CMYK	0.00, 0.71, 0.49, 0.09
HSL	341°, 77%, 58%
HSV	341°, 71%, 91%
XYZ	38.1141, 22.1697, 19.0999
YIQ	121.1490, 81.9690, 50.8410

Conversions

Conversions Part 2

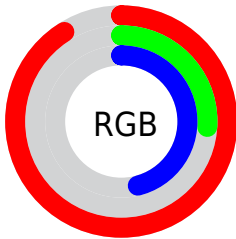
Format	Color
R_{YB}	231, 66, 117
Decimal	15155829
CIE _{Lab}	54.21, 66.09, 9.09
CIE _{LCh}	54, 66.714, 7.831
Yxy	22.1709, 0.4801, 0.2793
Android (android.graphics.Color)	4293345909 (0xFFE74275)
YUV	121.1490, -2.0455, 96.3393
Hunter-Lab	47.0847, 62.0938, 8.9083

Details

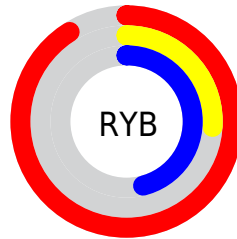
The HunterLab color **47.0847, 62.0938, 8.9083** is a dark color, and the websafe version is hex **CC3366**. The color can be described as middle muted rose. A complement of this color would be **78.4895, -48.5208, 14.8936**, and the grayscale version is **43.7719, -2.3356, 2.3782**.

A 20% lighter version of the original color is **62.2831, 50.7384, 3.5345**, and **29.9595, 52.7407, 8.2420** is the 20% darker color. If you saturate the color by 10%, you get **44.3289, 68.0564, 12.0260**, and if you desaturate by 10%, it is **50.8375, 54.1767, 6.4108**.

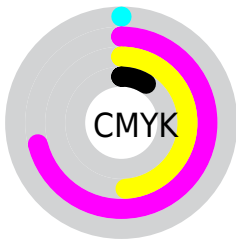
Distribution



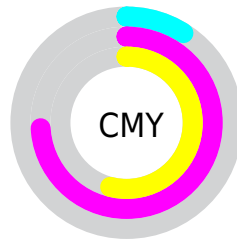
- Red (91%)
- Green (26%)
- Blue (46%)



- Red (91%)
- Yellow (26%)
- Blue (46%)



- Cyan (0%)
- Magenta (71%)
- Yellow (49%)
- Black (9%)



- Cyan (9%)
- Magenta (74%)
- Yellow (54%)

Brightness & Saturation Gradients

These gradients show how the HunterLab color 47.0847, 62.0938, 8.9083 changes by changing the brightness by 10 percent. The first figure shows a shift by +10% for each color and the second figure -10%.

Similar to the brightness gradients but the following saturation gradients show a change of the HunterLab color 47.0847, 62.0938, 8.9083 by changing the saturation by 10% instead.

47.0847, 62.0938,
8.9083

47.0847, 62.0938,
8.9083

162.3076, 78.2060,
18.8424

37.3933, 59.8651,
7.8377

68.5772, 66.3230,
11.0501

28.4755, 57.6353,
6.7541

80.2908, 68.2996,
12.1286

20.4071, 55.5456,
5.6432

92.6045, 70.1785,
13.2164

13.2891, 53.9989,
4.4768

105.4903, 71.9615,
14.3152

6.8253, 59.5521,
4.7777

118.9239, 73.6517,
15.4264

0.0000, INF, NaN

0.0000, NaN, NaN

132.8837, 75.2531,

16.5510

0.0000, NaN, NaN

147.3507, 76.7699,
17.6895

0.0000, NaN, NaN

■ 47.0847, 62.0938,
8.9083

■ 47.0847, 62.0938,
8.9083

■ 44.3289, 68.0564,
12.0260

■ 50.8375, 54.1767,
6.4108

■ 42.5907, 71.5018,
15.5091

■ 55.4899, 45.0464,
4.6350


■ 41.7718, 72.6366,
18.4565


■ 60.9229, 35.3201,
3.5698


■ 67.0170, 25.4213,
3.1391

■ 73.6662, 15.5940,
3.2452

 80.7823, 5.9563,
3.7934

 88.2941, -3.4497,
4.7022

 96.1450, -12.6232,
5.9049

 97.8411, -12.9293,
2.7323

Harmonies

Analogous

The Analogous color harmony consists of three colors that are next to each other on the color wheel.



47.0860, 57.0818, -20.6194



47.0847, 62.0938, 8.9083



47.0860, 46.9022, 24.1427

Triad

The Triadic color harmony groups three colors that are evenly spaced from another and form a triangle on the color wheel.



47.0860, 62.0896, 8.9095



47.0860, -30.7355, 27.4865



47.0860, -20.8388, -71.7781

Complementary

The Complementary color scheme is a pair of colors which are on the opposite of each other on the color wheel.



47.0847, 62.0938, 8.9083



78.4895, -48.5208, 14.8936

Split Complementary

Split-complementary colors differ from the complementary color scheme. The scheme consists of three colors, the original color and two neighbors of the complement color.



47.0860, -37.4000, -39.8567



47.0847, 62.0938, 8.9083



47.0860, -42.1336, 17.8573

Square

The Square scheme is like the rectangle color scheme, but the four colors are evenly spaced on the color wheel.



47.0860, 62.0896, 8.9095



47.0860, -9.4994, 30.1157



47.0860, -44.2569, -4.8118



47.0860, 4.9020, -79.3609

Rectangle

The Rectangle color scheme consists of four colors that form a rectangle on the color wheel.



47.0847, 62.0938, 8.9083



47.0860, 29.0457, 28.3453



47.0860, -44.2569, -4.8118



47.0860, -27.4721, -62.9147

Sweetspot

The Sweet Spot groups the original color and five complimentary colors.



47.0860, 62.0896, 8.9095



82.6470, 17.1066, 3.6423



43.8424, 65.3924, -74.0784



37.2528, 9.3173, 1.6429

0.0000, NaN, NaN



46.2646, -2.4686, 2.5136

Same Dimension

The Same Dimension uses a secret algorithm to generate beautiful new colors.



47.0860, 62.0896, 8.9095



48.4691, 78.4503, 15.3900



50.7892, 45.1810, 26.0681



38.0013, 1.8867, 1.8237



31.3076, 54.5013, 13.3614



8.6053, 15.1633, 2.2545

Inverse Universe

The Inverse Universe completely reimagines the original color for something new.



47.0860, 62.0896, 8.9095



48.4691, 78.4503, 15.3900



69.7035, -25.9491, -21.8098



38.0013, 1.8867, 1.8237



31.3076, 54.5013, 13.3614



8.6053, 15.1633, 2.2545

Previews

White Background



This preview shows how the HunterLab color 47.0847, 62.0938, 8.9083 looks on a white background.

Color Contrast Check

Large Text (above 18pt) WCAG AA ✓ Pass

Any Text WCAG AA × Fail

Large Text (above 18pt) WCAG AAA × Fail

Any Text WCAG AAA × Fail

Black Background



This preview shows how the HunterLab color 47.0847, 62.0938, 8.9083 looks on a black background.

Color Contrast Check

Large Text (above 18pt) WCAG AA ✓ Pass

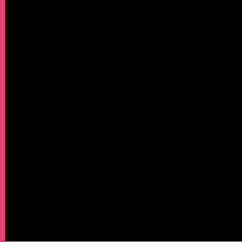
Any Text WCAG AA ✓ Pass

Large Text (above 18pt) WCAG AAA ✓ Pass

Any Text WCAG AAA × Fail

If you want to check with other color combinations, try the [Color Contrast Checker](#).

HunterLab 47.0847, 62.0938, 8.9083 Background



This preview shows how black text looks on a background with the HunterLab color 47.0847, 62.0938, 8.9083.



This preview shows how white text looks on a background with the HunterLab color 47.0847, 62.0938,

Color Blindness Simulation

Color vision deficiency is a very complex topic, and I could not describe the different causes any better than Wikipedia does, so if you want to learn more, you should check out their [article about color blindness](#).

Dichromacy



Original Color

47.0847, 62.0938, 8.9083

Protanopia

47.3319, 0.5962, -8.0345

Deuteranopia

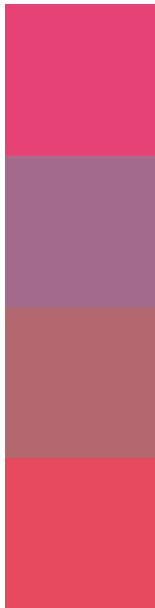
47.1756, 3.2260, 10.9426



Tritanopia

47.1749, 54.5704, 20.7275

Trichromacy



Original Color

47.0847, 62.0938, 8.9083

Protanomaly

44.7936, 21.7293, -4.3490

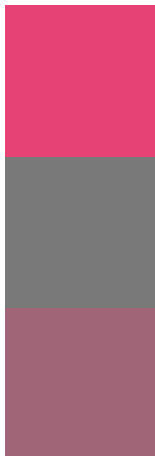
Deuteranomaly

45.4469, 24.4149, 8.4331

Tritanomaly

47.1678, 57.1986, 17.0485

Monochromacy



Original Color

47.0847, 62.0938, 8.9083

Achromatopsia

43.7266, -2.3331, 2.3758

Achromatomaly

42.7089, 20.3078, 2.0046

CSS Examples

Text

The CSS property to change the color of the text to HunterLab 47.0847, 62.0938, 8.9083 is called "color". The color property can be set on classes, ids or directly on the HTML element.

This example shows how text in the color `rgb(231, 66, 117)` looks like.

```
.text, #text, p{  
    color:rgb(231, 66, 117)  
}
```

If you want to add a text shadow in that color use the text-shadow property, you can generate a text shadow directly with our [CSS Text Shadow Generator](#).

Here you see how black text with a 4 pixel rgb(231, 66, 117) colored shadow looks like.

```
.shadow{ text-shadow: 4px 4px 2px rgb(231, 66, 117) }
```

Border

The CSS property to change the border of an element to HunterLab 47.0847, 62.0938, 8.9083 is called "border". The border property can be set on classes, ids or directly on the HTML element.

This example shows the color as border, it can be applied via the CSS property "border" or "border-color".

```
.border, #border, table{ border:4px solid rgb(231, 66, 117) }
```


If only the border color should be changed use the property border-color.

```
.border{ border-color:rgb(231, 66, 117) }
```

If you want to add a box shadow in that color use:

Here you see how a box with a 4 pixel rgb(231, 66, 117) colored shadow looks like.

```
.boxshadow{ -moz-box-shadow:4px 4px 4px  
4px rgb(231, 66, 117); -webkit-box-  
shadow:4px 4px 4px 4px rgb(231, 66, 117);  
box-shadow:4px 4px 4px 4px rgb(231, 66,  
117) }
```

Background

The CSS property to change the background color of an element to HunterLab 47.0847, 62.0938, 8.9083 is called "background". The background property can be set on classes, ids or directly on the HTML element.

```
.background, #background, body{  
background: rgb(231, 66, 117) }
```

If only the background color should be changed can be used:

```
.background{ background-color: rgb(231, 66,  
117) }
```

This example shows the color as background, it is applied via the CSS property "background".

To optimize and compress your CSS code, you can use our [online CSS compressor and optimizer](#) based on csstidy. If you want to create a linear or radial gradient as background or border, check our [CSS Gradient Generator](#).

Hey! You found this booklet interesting? Support Converting Colors with the new Membership Option!

The pro membership hides all ads, plus gives you double the colors in the color bucket, and more awesome pro features!

[Learn more, Memberships starting at \\$2.50/m!](#)

**Follow me
on Twitter!**

@ConvertingColor