

Converting Colors

HunterLab(47.1904, 64.7566,
4.5539)

Have a look what the booklet for
HunterLab(47.1904, 64.7566,
4.5539) contains.

HunterLab(47.1904, 64.7566, 4.5539)	3
<i>Conversions</i>	4
<i>Details</i>	6
<i>Harmonies</i>	12
<i>Previews</i>	24
<i>Color Blindness Simulation</i>	28
<i>CSS Examples</i>	31

Color

**HunterLab(47.1904, 64.7566,
4.5539)**

Conversions

Conversions Part 1

Format	Color
Hex	E83F80
RGB	232, 63, 128
RGB Percent	91%, 25%, 50%
CMY	0.0902, 0.7529, 0.4980
CMYK	0.00, 0.73, 0.45, 0.09
HSL	337°, 79%, 58%
HSV	337°, 73%, 91%
XYZ	38.9525, 22.2693, 22.6675
YIQ	120.9410, 79.8590, 56.0430

Conversions

Conversions Part 2

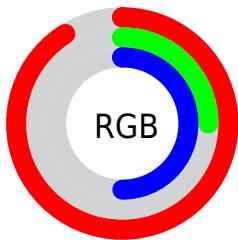
Format	Color
RYB	232, 63, 128
Decimal	15220608
CIELab	54.31, 68.32, 2.69
CIElCh	54, 68.377, 2.258
Yxy	22.2706, 0.4643, 0.2655
Android (android.graphics.Color)	4293410688 (0xFFE83F80)
YUV	120.9410, 3.4801, 97.3987
Hunter-Lab	47.1904, 64.7566, 4.5539

Details

The HunterLab color **47.1904, 64.7566, 4.5539** is a dark color, and the websafe version is hex **CC3366**. The color can be described as middle washed rose. A complement of this color would be **78.4606, -51.1207, 19.8216**, and the grayscale version is **43.6710, -2.3302, 2.3727**.

A 20% lighter version of the original color is **62.2592, 53.5030, -2.3307**, and **30.3685, 53.8658, 5.2141** is the 20% darker color. If you saturate the color by 10%, you get **44.5750, 70.3706, 7.6338**, and if you desaturate by 10%, it is **50.8001, 57.0153, 2.3049**.

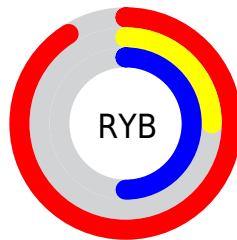
Distribution



Red (91%)

Green (25%)

Blue (50%)



Red (91%)

Yellow (25%)

Blue (50%)

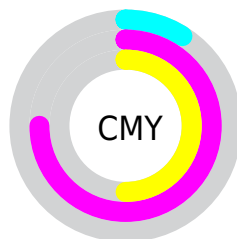


Cyan (0%)

Magenta (73%)

Yellow (45%)

Black (9%)



Cyan (9%)

Magenta (75%)

Yellow (50%)

Brightness & Saturation Gradients

These gradients show how the HunterLab color 47.1904, 64.7566, 4.5539 changes by changing the brightness by 10 percent. The first figure shows a shift by +10% for each color and the second figure -10%.

Similar to the brightness gradients but the following saturation gradients show a change of the HunterLab color 47.1904, 64.7566, 4.5539 by changing the saturation by 10% instead.

47.1904, 64.7566,
4.5539

47.1904, 64.7566,
4.5539

162.4673, 81.4357,
11.8808

37.4911, 62.4829,
3.8736

68.6970, 69.1003,
6.0018

28.5649, 60.2252,
3.2203

80.4171, 71.1399,
6.7658

20.4871, 58.1411,
2.5943

92.7369, 73.0833,
7.5562

13.3584, 56.6722,
1.9932

105.6286, 74.9315,
8.3723

6.9099, 62.3055,
1.9923

119.0678, 76.6871,
9.2134

0.0000, INF, NaN

0.0000, INF, NaN

133.0331, 78.3537,

10.0789

0.0000, NaN, NaN

147.5053, 79.9353,
10.9682

0.0000, NaN, NaN

■ 47.1904, 64.7566,
4.5539

■ 47.1904, 64.7566,
4.5539

■ 44.5750, 70.3706,
7.6338

■ 50.8001, 57.0153,
2.3049

■ 42.9583, 73.3572,
11.3085

■ 55.3175, 47.8830,
0.9482

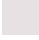
■ 42.2857, 74.1300,
14.0337


■ 60.6288, 38.0093,
0.4285

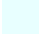
■ 66.6160, 27.8603,
0.6299

■ 73.1725, 17.7172,
1.4248

 80.2086, 7.7251,
2.6974

 87.6512, -2.0562,
4.3520

 95.4418, -11.6149,
6.3134

 97.9264, -12.6262,
2.8400

Harmonies

Analogous

The Analogous color harmony consists of three colors that are next to each other on the color wheel.



47.1917, 55.6555, -28.2787



47.1904, 64.7566, 4.5539



47.1917, 52.6051, 22.6312

Triad

The Triadic color harmony groups three colors that are evenly spaced from another and form a triangle on the color wheel.



47.1917, 64.7524, 4.5552



47.1917, -28.1010, 28.6752



47.1917, -25.1893, -69.6213

Complementary

The Complementary color scheme is a pair of colors which are on the opposite of each other on the color wheel.



47.1904, 64.7566, 4.5539



78.4606, -51.1207, 19.8216

Split Complementary

Split-complementary colors differ from the complementary color scheme. The scheme consists of three colors, the original color and two neighbors of the complement color.



47.1917, -40.1599, -34.0594



47.1904, 64.7566, 4.5539



47.1917, -41.5428, 20.8160

Square

The Square scheme is like the rectangle color scheme, but the four colors are evenly spaced on the color wheel.



47.1917, 64.7524, 4.5552



47.1917, -4.6369, 30.5021



47.1917, -45.3794, 0.4921



47.1917, -0.3663, -83.4257

Rectangle

The Rectangle color scheme consists of four colors that form a rectangle on the color wheel.



47.1904, 64.7566, 4.5539



47.1917, 35.4414, 27.8547



47.1917, -45.3794, 0.4921



47.1917, -31.3210, -59.0809

Sweetspot

The Sweet Spot groups the original color and five complimentary colors.



47.1917, 64.7524, 4.5552



82.0081, 18.9083, 1.6725



41.6150, 63.3041, -82.0178



36.9891, 10.1647, 0.6305

0.0000, NaN, NaN



46.2646, -2.4686, 2.5136

Same Dimension

The Same Dimension uses a secret algorithm to generate beautiful new colors.



47.1917, 64.7524, 4.5552



48.6572, 80.2487, 10.3240



48.2068, 52.7832, 24.8430



38.0254, 2.0160, 1.4806



31.5429, 55.3664, 9.9306



8.6773, 15.4264, 1.2172

Inverse Universe

The Inverse Universe completely reimagines the original color for something new.



47.1917, 64.7524, 4.5552



48.6572, 80.2487, 10.3240



74.5223, -32.3467, -15.3853



38.0254, 2.0160, 1.4806



31.5429, 55.3664, 9.9306



8.6773, 15.4264, 1.2172

Previews

White Background



This preview shows how the HunterLab color 47.1904, 64.7566, 4.5539 looks on a white background.

Color Contrast Check

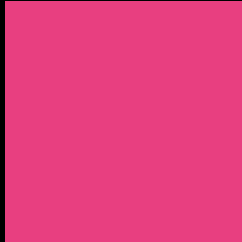
Large Text (above 18pt) WCAG AA ✓ Pass

Any Text WCAG AA × Fail

Large Text (above 18pt) WCAG AAA × Fail

Any Text WCAG AAA × Fail

Black Background



This preview shows how the HunterLab color 47.1904, 64.7566, 4.5539 looks on a black background.

Color Contrast Check

Large Text (above 18pt) WCAG AA ✓ Pass

Any Text WCAG AA ✓ Pass

Large Text (above 18pt) WCAG AAA ✓ Pass

Any Text WCAG AAA × Fail

If you want to check with other color combinations, try the [Color Contrast Checker](#).

HunterLab 47.1904, 64.7566, 4.5539 Background



This preview shows how black text looks on a background with the HunterLab color 47.1904, 64.7566, 4.5539.



This preview shows how white text looks on a background with the HunterLab color 47.1904, 64.7566,

Color Blindness Simulation

Color vision deficiency is a very complex topic, and I could not describe the different causes any better than Wikipedia does, so if you want to learn more, you should check out their [article about color blindness](#).

Dichromacy



Original Color

47.1904, 64.7566, 4.5539

Protanopia

47.4926, 2.2447, -16.3367

Deuteranopia

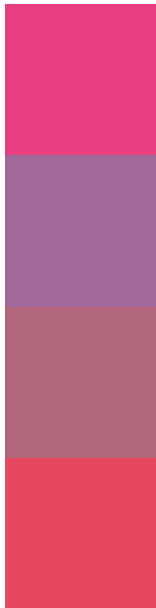
47.4139, 3.1760, 7.0518



Tritanopia

47.1749, 54.5704, 20.7275

Trichromacy



Original Color

47.1904, 64.7566, 4.5539

Protanomaly

44.6991, 23.6045, -12.0178

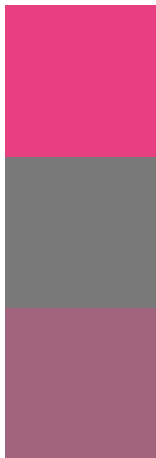
Deuteranomaly

45.3823, 25.9351, 3.9369

Tritanomaly

47.1090, 57.9224, 15.8088

Monochromacy



Original Color

47.1904, 64.7566, 4.5539

Achromatopsia

43.7266, -2.3331, 2.3758

Achromatomaly

42.5989, 21.3802, 0.0832

CSS Examples

Text

The CSS property to change the color of the text to HunterLab 47.1904, 64.7566, 4.5539 is called "color". The color property can be set on classes, ids or directly on the HTML element.

This example shows how text in the color `rgb(232, 63, 128)` looks like.

```
.text, #text, p{  
    color:rgb(232, 63, 128)  
}
```

If you want to add a text shadow in that color use the text-shadow property, you can generate a text shadow directly with our [CSS Text Shadow Generator](#).

Here you see how black text with a 4 pixel rgb(232, 63, 128) colored shadow looks like.

```
.shadow{ text-shadow: 4px 4px 2px rgb(232, 63, 128) }
```

Border

The CSS property to change the border of an element to HunterLab 47.1904, 64.7566, 4.5539 is called "border". The border property can be set on classes, ids or directly on the HTML element.

This example shows the color as border, it can be applied via the CSS property "border" or "border-color".

```
.border, #border, table{ border:4px solid rgb(232, 63, 128) }
```


If only the border color should be changed use the property `border-color`.

```
.border{ border-color:rgb(232, 63, 128) }
```

If you want to add a box shadow in that color use:

Here you see how a box with a 4 pixel `rgb(232, 63, 128)` colored shadow looks like.

```
.boxshadow{ -moz-box-shadow:4px 4px 4px  
4px rgb(232, 63, 128); -webkit-box-  
shadow:4px 4px 4px 4px rgb(232, 63, 128);  
box-shadow:4px 4px 4px 4px rgb(232, 63,  
128) }
```

Background

The CSS property to change the background color of an element to HunterLab 47.1904, 64.7566, 4.5539 is called "background". The background property can be set on classes, ids or directly on the HTML element.

```
.background, #background, body{  
background: rgb(232, 63, 128) }
```

If only the background color should be changed can be used:

```
.background{ background-color: rgb(232, 63,  
128) }
```

This example shows the color as background, it is applied via the CSS property "background".

To optimize and compress your CSS code, you can use our [online CSS compressor and optimizer](#) based on csstidy. If you want to create a linear or radial gradient as background or border, check our [CSS Gradient Generator](#).

Hey! You found this booklet interesting? Support Converting Colors with the new Membership Option!

The pro membership hides all ads, plus gives you double the colors in the color bucket, and more awesome pro features!

[Learn more, Memberships starting at \\$2.50/m!](#)

**Follow me
on Twitter!**

@ConvertingColor