

Converting Colors

HunterLab(47.2080, 80.6165,
16.6021)

Have a look what the booklet for
HunterLab(47.2080, 80.6165,
16.6021) contains.

HunterLab(47.2080, 80.6165, 16.6021)	3
<i>Conversions</i>	4
<i>Details</i>	6
<i>Harmonies</i>	12
<i>Previews</i>	24
<i>Color Blindness Simulation</i>	28
<i>CSS Examples</i>	31

Color

**HunterLab(47.2080, 80.6165,
16.6021)**

Conversions

Conversions Part 1

Format	Color
Hex	FE1060
RGB	254, 16, 96
RGB Percent	100%, 6%, 38%
CMY	0.0039, 0.9371, 0.6235
CMYK	0.00, 0.94, 0.62, 0.00
HSL	340°, 99%, 53%
HSV	340°, 94%, 100%
XYZ	43.1697, 22.2860, 13.0927
YIQ	96.2820, 116.1680, 75.3360

Conversions

Conversions Part 2

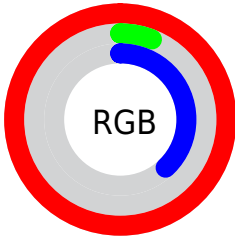
Format	Color
R_{YB}	254, 16, 96
Decimal	16650336
CIE _{Lab}	54.33, 81.19, 22.54
CIE _{LCh}	54, 84.265, 15.517
Yxy	22.2873, 0.5496, 0.2837
Android (android.graphics.Color)	4294840416 (0xFFFE1060)
YUV	96.2820, -0.1390, 138.3187
Hunter-Lab	47.2080, 80.6165, 16.6021

Details

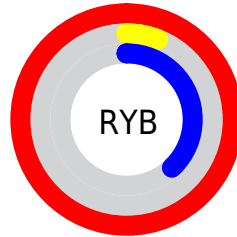
The HunterLab color **47.2080, 80.6165, 16.6021** is a dark color, and the websafe version is hex **FF0066**. The color can be described as dark washed rose. A complement of this color would be **86.0533, -60.7743, 24.3540**, and the grayscale version is **34.2867, -1.8295, 1.8629**.

A 20% lighter version of the original color is **57.1338, 59.6086, 8.0287**, and **33.2533, 57.6661, 15.9158** is the 20% darker color. If you saturate the color by 10%, you get **46.6176, 81.2528, 19.1264**, and if you desaturate by 10%, it is **48.8643, 77.6095, 12.5605**.

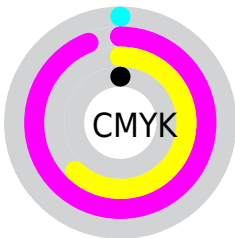
Distribution



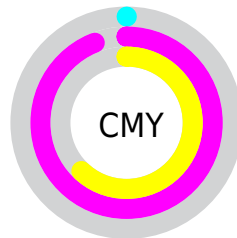
- Red (100%)
- Green (6%)
- Blue (38%)



- Red (100%)
- Yellow (6%)
- Blue (38%)



- Cyan (0%)
- Magenta (94%)
- Yellow (62%)
- Black (0%)



- Cyan (0%)
- Magenta (94%)
- Yellow (62%)

Brightness & Saturation Gradients

These gradients show how the HunterLab color 47.2080, 80.6165, 16.6021 changes by changing the brightness by 10 percent. The first figure shows a shift by +10% for each color and the second figure -10%.

Similar to the brightness gradients but the following saturation gradients show a change of the HunterLab color 47.2080, 80.6165, 16.6021 by changing the saturation by 10% instead.

47.2080, 80.6165,
16.6021

47.2080, 80.6165,
16.6021

162.4940,
100.3538, 32.4730

37.5076, 78.1503,
14.6192

68.7171, 85.5319,
20.3501

28.5799, 75.8338,
12.5228

80.4383, 87.9051,
22.1495

20.5005, 73.9458,
10.2656

92.7591, 90.1973,
23.9153

13.3701, 73.2305,
8.6879

105.6518, 92.4026,
25.6559

6.9240, 82.2071,
4.8468

119.0919, 94.5195,
27.3776

0.0000, INF, NaN

0.0000, INF, NaN

133.0581, 96.5489,

29.0852

0.0000, NaN, NaN

147.5312, 98.4928,
30.7826

0.0000, NaN, NaN

■ 47.2080, 80.6165,
16.6021

■ 47.2080, 80.6165,
16.6021

■ 46.6176, 81.2528,
19.1264

■ 48.8643, 77.6095,
12.5605

■ 51.6447, 71.6616,
8.9405

■ 55.5539, 63.2958,
6.0565

■ 60.5032, 53.3230,
4.0462

■ 66.3622, 42.4950,
2.9006

72.9949, 31.3526,
2.5275

80.2781, 20.2218,
2.8055

88.1077, 9.2695,
3.6167

96.3993, -1.4366,
4.8597

Harmonies

Analogous

The Analogous color harmony consists of three colors that are next to each other on the color wheel.



47.2095, 81.1130, -16.2417



47.2080, 80.6165, 16.6021



47.2095, 53.9859, 29.1401

Triad

The Triadic color harmony groups three colors that are evenly spaced from another and form a triangle on the color wheel.



47.2095, 80.6109, 16.6032



47.2095, -41.3486, 28.9303



47.2095, -18.0911, -109.6218

Complementary

The Complementary color scheme is a pair of colors which are on the opposite of each other on the color wheel.



47.2080, 80.6165, 16.6021



86.0533, -60.7743, 24.3540

Split Complementary

Split-complementary colors differ from the complementary color scheme. The scheme consists of three colors, the original color and two neighbors of the complement color.



47.2095, -40.7983, -68.9500



47.2080, 80.6165, 16.6021



47.2095, -51.3471, 15.8581

Square

The Square scheme is like the rectangle color scheme, but the four colors are evenly spaced on the color wheel.



47.2095, 80.6109, 16.6032



47.2095, -19.0940, 31.9509



47.2095, -51.1801, -17.7837



47.2095, 16.7085, -108.7928

Rectangle

The Rectangle color scheme consists of four colors that form a rectangle on the color wheel.



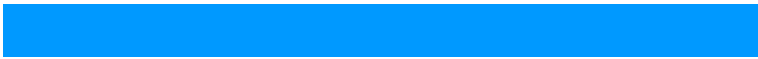
47.2080, 80.6165, 16.6021



47.2095, 28.4692, 31.5331



47.2095, -51.1801, -17.7837



47.2095, -27.1351, -99.5327

Sweetspot

The Sweet Spot groups the original color and five complimentary colors.



47.2095, 80.6109, 16.6032



77.4009, 25.1328, 2.6249



40.1920, 84.2542, -112.0785



34.3655, 13.8645, 1.1756

0.0000, NaN, NaN



46.2646, -2.4686, 2.5136

Same Dimension

The Same Dimension uses a secret algorithm to generate beautiful new colors.



47.2095, 80.6109, 16.6032



46.8260, 81.6147, 19.2209



48.5194, 70.2806, 30.5264



42.5297, 2.2162, 1.8999



33.8850, 59.1302, 13.3600



10.6646, 18.7859, 2.8417

Inverse Universe

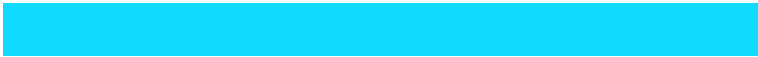
The Inverse Universe completely reimagines the original color for something new.



47.2095, 80.6109, 16.6032



46.8260, 81.6147, 19.2209



75.8739, -31.0184, -27.0608



42.5297, 2.2162, 1.8999



33.8850, 59.1302, 13.3600



10.6646, 18.7859, 2.8417

Previews

White Background



This preview shows how the HunterLab color 47.2080, 80.6165, 16.6021 looks on a white background.

Color Contrast Check

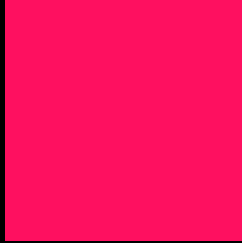
Large Text (above 18pt) WCAG AA ✓ Pass

Any Text WCAG AA × Fail

Large Text (above 18pt) WCAG AAA × Fail

Any Text WCAG AAA × Fail

Black Background



This preview shows how the HunterLab color 47.2080, 80.6165, 16.6021 looks on a black background.

Color Contrast Check

Large Text (above 18pt) WCAG AA ✓ Pass

Any Text WCAG AA ✓ Pass

Large Text (above 18pt) WCAG AAA ✓ Pass

Any Text WCAG AAA × Fail

If you want to check with other color combinations, try the [Color Contrast Checker](#).

HunterLab 47.2080, 80.6165, 16.6021 Background



This preview shows how black text looks on a background with the HunterLab color 47.2080, 80.6165, 16.6021.



This preview shows how white text looks on a background with the HunterLab color 47.2080, 80.6165,

Color Blindness Simulation

Color vision deficiency is a very complex topic, and I could not describe the different causes any better than Wikipedia does, so if you want to learn more, you should check out their [article about color blindness](#).

Dichromacy



Original Color

47.2080, 80.6165, 16.6021

Protanopia

47.5442, -0.8978, -1.6597

Deuteranopia

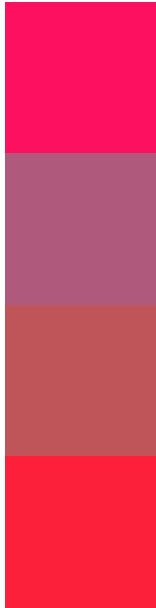
47.4249, 3.1155, 18.5330



Tritanopia

47.3511, 72.7782, 28.1556

Trichromacy



Original Color

47.2080, 80.6165, 16.6021

Protanomaly

42.0879, 31.9061, -0.3695

Deuteranomaly

42.9240, 36.2889, 14.0302

Tritanomaly

47.1502, 75.7852, 25.1775

Monochromacy



Original Color

47.2080, 80.6165, 16.6021

Achromatopsia

34.2010, -1.8249, 1.8582

Achromatomaly

34.1045, 30.6303, 2.3126

CSS Examples

Text

The CSS property to change the color of the text to HunterLab 47.2080, 80.6165, 16.6021 is called "color". The color property can be set on classes, ids or directly on the HTML element.

This example shows how text in the color `rgb(254, 16, 96)` looks like.

```
.text, #text, p{  
    color:rgb(254, 16, 96)  
}
```

If you want to add a text shadow in that color use the text-shadow property, you can generate a text shadow directly with our [CSS Text Shadow Generator](#).

Here you see how black text with a 4 pixel rgb(254, 16, 96) colored shadow looks like.

```
.shadow{ text-shadow: 4px 4px 2px rgb(254, 16, 96) }
```

Border

The CSS property to change the border of an element to HunterLab 47.2080, 80.6165, 16.6021 is called "border". The border property can be set on classes, ids or directly on the HTML element.

This example shows the color as border, it can be applied via the CSS property "border" or "border-color".

```
.border, #border, table{ border:4px solid rgb(254, 16, 96) }
```


If only the border color should be changed use the property border-color.

```
.border{ border-color:rgb(254, 16, 96) }
```

If you want to add a box shadow in that color use:

Here you see how a box with a 4 pixel rgb(254, 16, 96) colored shadow looks like.

```
.boxshadow{ -moz-box-shadow:4px 4px 4px  
4px rgb(254, 16, 96); -webkit-box-  
shadow:4px 4px 4px 4px rgb(254, 16, 96);  
box-shadow:4px 4px 4px 4px rgb(254, 16,  
96) }
```

Background

The CSS property to change the background color of an element to HunterLab 47.2080, 80.6165, 16.6021 is called "background". The background property can be set on classes, ids or directly on the HTML element.

```
.background, #background, body{  
background: rgb(254, 16, 96) }
```

If only the background color should be changed can be used:

```
.background{ background-color: rgb(254, 16,  
96) }
```

This example shows the color as background, it is applied via the CSS property "background".

To optimize and compress your CSS code, you can use our [online CSS compressor and optimizer](#) based on csstidy. If you want to create a linear or radial gradient as background or border, check our [CSS Gradient Generator](#).

Hey! You found this booklet interesting? Support Converting Colors with the new Membership Option!

The pro membership hides all ads, plus gives you double the colors in the color bucket, and more awesome pro features!

[Learn more, Memberships starting at \\$2.50/m!](#)

**Follow me
on Twitter!**

@ConvertingColor