

Converting Colors

HunterLab(47.2364, 7.1109,
14.0982)

Have a look what the booklet for
HunterLab(47.2364, 7.1109,
14.0982) contains.

HunterLab(47.2364, 7.1109, 14.0982)	3
<i>Conversions</i>	4
<i>Details</i>	6
<i>Harmonies</i>	12
<i>Previews</i>	24
<i>Color Blindness Simulation</i>	28
<i>CSS Examples</i>	31

Color

**HunterLab(47.2364, 7.1109,
14.0982)**

Conversions

Conversions Part 1

Format	Color
Hex	A07A64
RGB	160, 122, 100
RGB Percent	63%, 48%, 39%
CMY	0.3725, 0.5216, 0.6078
CMYK	0.00, 0.24, 0.37, 0.37
HSL	22°, 24%, 51%
HSV	22°, 37%, 63%
XYZ	23.7570, 22.3128, 15.1113
YIQ	130.8540, 29.7100, 1.2140

Conversions

Conversions Part 2

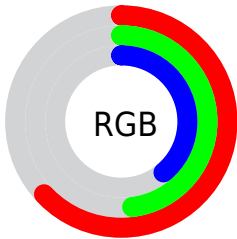
Format	Color
R_{YB}	160, 135, 100
Decimal	10517092
CIE _{Lab}	54.36, 11.69, 17.76
CIE _{LCh}	54, 21.262, 56.637
Yxy	22.3138, 0.3883, 0.3647
Android (android.graphics.Color)	4288707172 (0xFFA07A64)
YUV	130.8540, -15.2110, 25.5610
Hunter-Lab	47.2364, 7.1109, 14.0982

Details

The HunterLab color $47.2364, 7.1109, 14.0982$ is a dark color, and the websafe version is hex 996666 . A complement of this color would be $48.3979, -8.3921, -11.0669$, and the grayscale version is $47.6341, -2.5416, 2.5881$.

A 20% lighter version of the original color is $68.6334, 7.4359, 17.1294$, and $28.5446, 6.8811, 10.7135$ is the 20% darker color. If you saturate the color by 10%, you get $44.3551, 10.4211, 16.3019$, and if you desaturate by 10%, it is $50.2734, 4.0508, 11.5624$.

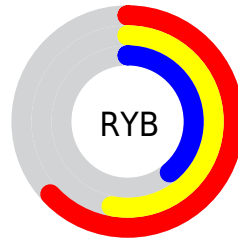
Distribution



Red (63%)

Green (48%)

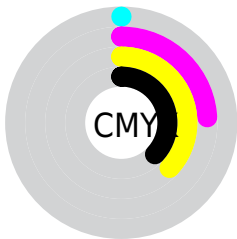
Blue (39%)



Red (63%)

Yellow (53%)

Blue (39%)

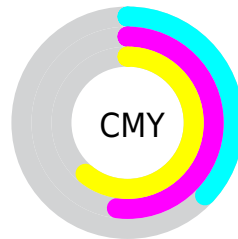


Cyan (0%)

Magenta (24%)

Yellow (37%)

Black (37%)



Cyan (37%)

Magenta (52%)

Yellow (61%)

Brightness & Saturation Gradients

These gradients show how the HunterLab color 47.2364, 7.1109, 14.0982 changes by changing the brightness by 10 percent. The first figure shows a shift by +10% for each color and the second figure -10%.

Similar to the brightness gradients but the following saturation gradients show a change of the HunterLab color 47.2364, 7.1109, 14.0982 by changing the saturation by 10% instead.

■ 47.2364, 7.1109,
14.0982

■ 47.2364, 7.1109,
14.0982

162.5364, 5.5516,
27.7949

■ 37.5336, 6.9729,
12.4510

■ 68.7489, 7.1518,
17.2549

■ 28.6036, 6.7448,
10.7278

■ 80.4718, 7.0751,
18.7897

■ 20.5217, 6.4072,
8.8917

■ 92.7943, 6.9412,
20.3071

■ 13.3885, 5.9344,
7.2054

■ 105.6885, 6.7548,
21.8129

■ 6.9462, 6.9641,
4.8624

119.1301, 6.5195,
23.3116

0.0000, NaN, NaN

0.0000, NaN, NaN

133.0977, 6.2388,

24.8064

0.0000, NaN, NaN

147.5722, 5.9154,
26.3002

0.0000, NaN, NaN

■ 47.2364, 7.1109,
14.0982

■ 47.2364, 7.1109,
14.0982

■ 44.3551, 10.4211,
16.3019

■ 50.2734, 4.0508,
11.5624

■ 41.6444, 13.9902,
18.1197

■ 53.4469, 1.2345,
8.7386

■ 39.1253, 17.8043,
19.4972

■ 56.7440, -1.3567,
5.6671

■ 36.8193, 21.8291,
20.3822

■ 60.1524, -3.7417,
2.3812

■ 34.7480, 25.9987,
20.7374

■ 63.6618, -5.9396,
-1.0912

■ 32.9276, 30.1917,
20.6115

■ 67.2630, -7.9689,
-4.7271

■ 32.5090, 31.2069,
20.5782

■ 70.9483, -9.8468,
-8.5073

■ 74.7108, -11.5891,
-12.4160

■ 78.5445, -13.2099,
-16.4400

Harmonies

Analogous

The Analogous color harmony consists of three colors that are next to each other on the color wheel.



47.2375, 13.5082, 9.2102



47.2364, 7.1109, 14.0982



47.2375, -1.5301, 15.9411

Triad

The Triadic color harmony groups three colors that are evenly spaced from another and form a triangle on the color wheel.



47.2375, 7.1090, 14.0989



47.2375, -18.2001, 3.5022



47.2375, 5.2743, -14.1247

Complementary

The Complementary color scheme is a pair of colors which are on the opposite of each other on the color wheel.



47.2364, 7.1109, 14.0982



48.3979, -8.3921, -11.0669

Split Complementary

Split-complementary colors differ from the complementary color scheme. The scheme consists of three colors, the original color and two neighbors of the complement color.



47.2375, -3.5077, -16.4003



47.2364, 7.1109, 14.0982



47.2375, -16.6658, -5.1975

Square

The Square scheme is like the rectangle color scheme, but the four colors are evenly spaced on the color wheel.



47.2375, 7.1090, 14.0989



47.2375, -15.7932, 10.5669



47.2375, -11.4402, -12.8774



47.2375, 12.3959, -7.1243

Rectangle

The Rectangle color scheme consists of four colors that form a rectangle on the color wheel.



47.2364, 7.1109, 14.0982



47.2375, -7.2529, 15.4993



47.2375, -11.4402, -12.8774



47.2375, 2.4006, -15.5170

Sweetspot

The Sweet Spot groups the original color and five complimentary colors.



47.2375, 7.1090, 14.0989



74.7937, -0.5656, 9.2089



42.9222, 23.2059, -6.3595



34.7649, -0.0609, 4.5572



89.8524, -4.7943, 4.8819



37.4146, -1.9963, 2.0328

Same Dimension

The Same Dimension uses a secret algorithm to generate beautiful new colors.



47.2375, 7.1090, 14.0989



60.3863, 13.2905, 21.5158



55.5430, -7.1330, 21.2303



26.5040, -0.4349, 2.9340



28.8285, 27.1805, 18.2398



4.7529, 1.5532, 2.9559

Inverse Universe

The Inverse Universe completely reimagines the original color for something new.



48.3979, -8.3921, -11.0669



62.2538, -11.9069, -19.3596



39.9660, 5.8236, -24.6096



26.6459, -2.3023, -0.1019



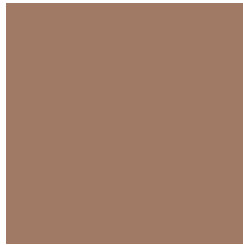
30.5982, -3.1702, -31.4014



4.9567, -1.7042, -2.5166

Previews

White Background



This preview shows how the HunterLab color 47.2364, 7.1109, 14.0982 looks on a white background.

Color Contrast Check

Large Text (above 18pt) WCAG AA ✓ Pass

Any Text WCAG AA × Fail

Large Text (above 18pt) WCAG AAA × Fail

Any Text WCAG AAA × Fail

Black Background



This preview shows how the HunterLab color 47.2364, 7.1109, 14.0982 looks on a black background.

Color Contrast Check

Large Text (above 18pt) WCAG AA ✓ Pass

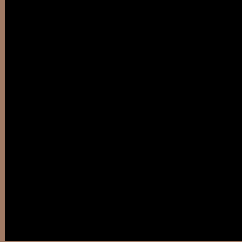
Any Text WCAG AA ✓ Pass

Large Text (above 18pt) WCAG AAA ✓ Pass

Any Text WCAG AAA × Fail

If you want to check with other color combinations, try the [Color Contrast Checker](#).

HunterLab 47.2364, 7.1109, 14.0982 Background



This preview shows how black text looks on a background with the HunterLab color 47.2364, 7.1109, 14.0982.



This preview shows how white text looks on a background with the HunterLab color 47.2364, 7.1109,

Color Blindness Simulation

Color vision deficiency is a very complex topic, and I could not describe the different causes any better than Wikipedia does, so if you want to learn more, you should check out their [article about color blindness](#).

Dichromacy



Original Color

47.2364, 7.1109, 14.0982

Protanopia

47.2948, -3.6492, 12.6606

Deuteranopia

47.2656, 3.0978, 14.3717



Tritanopia

47.1971, 13.5189, 4.0961

Trichromacy



Original Color

47.2364, 7.1109, 14.0982

Protanomaly

47.1901, 0.2241, 12.9600

Deuteranomaly

47.3118, 4.6214, 14.4413

Tritanomaly

47.0738, 11.3117, 8.0075

Monochromacy



Original Color

47.2364, 7.1109, 14.0982

Achromatopsia

47.6409, -2.5420, 2.5884

Achromatomaly

47.4818, 0.6073, 7.0803

CSS Examples

Text

The CSS property to change the color of the text to HunterLab 47.2364, 7.1109, 14.0982 is called "color". The color property can be set on classes, ids or directly on the HTML element.

This example shows how text in the color `rgb(160, 122, 100)` looks like.

```
.text, #text, p{  
    color:rgb(160, 122, 100)  
}
```

If you want to add a text shadow in that color use the text-shadow property, you can generate a text shadow directly with our [CSS Text Shadow Generator](#).

Here you see how black text with a 4 pixel rgb(160, 122, 100) colored shadow looks like.

```
.shadow{ text-shadow: 4px 4px 2px rgb(160, 122, 100) }
```

Border

The CSS property to change the border of an element to HunterLab 47.2364, 7.1109, 14.0982 is called "border". The border property can be set on classes, ids or directly on the HTML element.

This example shows the color as border, it can be applied via the CSS property "border" or "border-color".

```
.border, #border, table{ border:4px solid rgb(160, 122, 100) }
```


If only the border color should be changed use the property `border-color`.

```
.border{ border-color:rgb(160, 122, 100) }
```

If you want to add a box shadow in that color use:

Here you see how a box with a 4 pixel `rgb(160, 122, 100)` colored shadow looks like.

```
.boxshadow{ -moz-box-shadow:4px 4px 4px  
4px rgb(160, 122, 100); -webkit-box-  
shadow:4px 4px 4px 4px rgb(160, 122, 100);  
box-shadow:4px 4px 4px 4px rgb(160, 122,  
100) }
```

Background

The CSS property to change the background color of an element to HunterLab 47.2364, 7.1109, 14.0982 is called "background". The background property can be set on classes, ids or directly on the HTML element.

```
.background, #background, body{  
background: rgb(160, 122, 100) }
```

If only the background color should be changed can be used:

```
.background{ background-color: rgb(160,  
122, 100) }
```

This example shows the color as background, it is applied via the CSS property "background".

To optimize and compress your CSS code, you can use our [online CSS compressor and optimizer](#) based on csstidy. If you want to create a linear or radial gradient as background or border, check our [CSS Gradient Generator](#).

Hey! You found this booklet interesting? Support Converting Colors with the new Membership Option!

The pro membership hides all ads, plus gives you double the colors in the color bucket, and more awesome pro features!

[Learn more, Memberships starting at \\$2.50/m!](#)

**Follow me
on Twitter!**

@ConvertingColor