

Converting Colors

HunterLab(47.3319, 4.4460,
14.3465)

Have a look what the booklet for
HunterLab(47.3319, 4.4460,
14.3465) contains.

| | |
|--|----|
| HunterLab(47.3118, 4.6214, 14.4413) | 3 |
| <i>Conversions</i> | 4 |
| <i>Details</i> | 6 |
| <i>Harmonies</i> | 12 |
| <i>Previews</i> | 24 |
| <i>Color Blindness Simulation</i> | 28 |
| <i>CSS Examples</i> | 31 |

Color

**HunterLab(47.3118, 4.6214,
14.4413)**

Conversions

Conversions Part 1

| Format | Color |
|---------------|----------------------------|
| Hex | 9C7C63 |
| RGB | 156, 124, 99 |
| RGB Percent | 61%, 49%, 39% |
| CMY | 0.3882, 0.5137, 0.6118 |
| CMYK | 0.00, 0.21, 0.37, 0.39 |
| HSL | 26°, 22%, 50% |
| HSV | 26°, 37%, 61% |
| XYZ | 23.1701, 22.3841, 14.9037 |
| YIQ | 130.7180, 27.0970, -0.9910 |

Conversions

Conversions Part 2

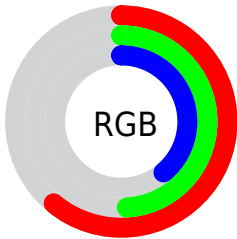
| Format | Color |
|-------------------------------------|--------------------------------|
| R_{YB} | 156, 144, 99 |
| Decimal | 10255459 |
| CIE _{Lab} | 54.43, 8.75, 18.36 |
| CIE _{LCh} | 54, 20.344, 64.510 |
| Yxy | 22.3851, 0.3832, 0.3702 |
| Android (android.graphics.Color) | 4288445539 (0xFF9C7C63) |
| YUV | 130.7180, -15.6370, 22.1723 |
| Hunter-Lab | 47.3118, 4.6214, 14.4413 |

Details

The HunterLab color $47.3118, 4.6214, 14.4413$ is a dark color, and the websafe version is hex 996666 . A complement of this color would be $46.1354, -6.2102, -12.1008$, and the grayscale version is $47.5828, -2.5389, 2.5853$.

A 20% lighter version of the original color is $69.0242, 4.3171, 17.8229$, and $28.5721, 4.5346, 10.9438$ is the 20% darker color. If you saturate the color by 10%, you get $44.7399, 7.2694, 16.7428$, and if you desaturate by 10%, it is $50.0062, 2.2160, 11.7640$.

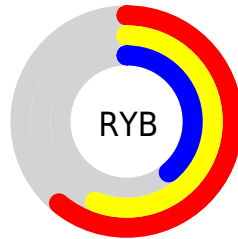
Distribution



Red (61%)

Green (49%)

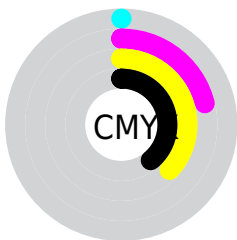
Blue (39%)



Red (61%)

Yellow (56%)

Blue (39%)

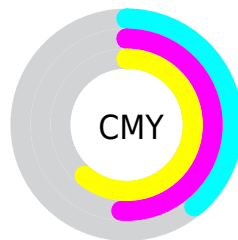


Cyan (0%)

Magenta (21%)

Yellow (37%)

Black (39%)



Cyan (39%)

Magenta (51%)

Yellow (61%)

Brightness & Saturation Gradients

These gradients show how the HunterLab color 47.3118, 4.6214, 14.4413 changes by changing the brightness by 10 percent. The first figure shows a shift by +10% for each color and the second figure -10%.

Similar to the brightness gradients but the following saturation gradients show a change of the HunterLab color 47.3118, 4.6214, 14.4413 by changing the saturation by 10% instead.

■ 47.3118, 4.6214,
14.4413

■ 47.3118, 4.6214,
14.4413

162.6502, 1.9267,
28.4083

■ 37.6034, 4.6428,
12.7527

■ 68.8344, 4.3704,
17.6711

■ 28.6674, 4.5850,
10.9837

■ 80.5618, 4.1584,
19.2387

■ 20.5788, 4.4312,
9.0960

■ 92.8887, 3.8952,
20.7869

■ 13.4380, 4.1585,
7.3950

■ 105.7871, 3.5845,
22.3220

■ 7.0056, 5.0713,
4.9039

119.2327, 3.2298,
23.8484

0.0000, NaN, NaN

0.0000, NaN, NaN

133.2042, 2.8337,

25.3699

0.0000, NaN, NaN

147.6824, 2.3987,
26.8891

0.0000, NaN, NaN

■ 47.3118, 4.6214,
14.4413

■ 47.3118, 4.6214,
14.4413

■ 44.7399, 7.2694,
16.7428

■ 50.0062, 2.2160,
11.7640

■ 42.2992, 10.1739,
18.6217

■ 52.8090, 0.0454,
8.7510

■ 40.0040, 13.3328,
20.0334

■ 55.7114, -1.9083,
5.4411

■ 37.8679, 16.7327,
20.9377

■ 58.7048, -3.6622,
1.8676

■ 35.9048, 20.3414,
21.3089

■ 61.7816, -5.2332,
-1.9401

■ 34.1252, 24.0913,
21.1801

■ 64.9350, -6.6377,
-5.9569

■ 33.5477, 25.3791,
21.1162

■ 68.1591, -7.8909,
-10.1612

■ 71.4486, -9.0068,
-14.5343

■ 74.7990, -9.9981,
-19.0602

Harmonies

Analogous

The Analogous color harmony consists of three colors that are next to each other on the color wheel.



47.3129, 11.5178, 10.4729



47.3118, 4.6214, 14.4413



47.3129, -3.7893, 15.4649

Triad

The Triadic color harmony groups three colors that are evenly spaced from another and form a triangle on the color wheel.



47.3129, 4.6196, 14.4419



47.3129, -17.5631, 1.3522



47.3129, 6.9668, -11.9003

Complementary

The Complementary color scheme is a pair of colors which are on the opposite of each other on the color wheel.



47.3118, 4.6214, 14.4413



46.1354, -6.2102, -12.1008

Split Complementary

Split-complementary colors differ from the complementary color scheme. The scheme consists of three colors, the original color and two neighbors of the complement color.



47.3129, -1.2513, -15.4255



47.3118, 4.6214, 14.4413



47.3129, -15.1034, -6.9731

Square

The Square scheme is like the rectangle color scheme, but the four colors are evenly spaced on the color wheel.



47.3129, 4.6196, 14.4419



47.3129, -16.2298, 8.7166



47.3129, -9.2731, -13.4819



47.3129, 12.9378, -4.5184

Rectangle

The Rectangle color scheme consists of four colors that form a rectangle on the color wheel.



47.3118, 4.6214, 14.4413



47.3129, -9.0371, 14.5217



47.3129, -9.2731, -13.4819



47.3129, 4.3553, -13.6290

Sweetspot

The Sweet Spot groups the original color and five complimentary colors.



47.3129, 4.6196, 14.4419



73.2355, -1.3745, 9.4673



41.9984, 21.2363, -4.2135



34.1269, -0.4914, 4.6996



88.7363, -4.7347, 4.8212



36.4511, -1.9449, 1.9805

Same Dimension

The Same Dimension uses a secret algorithm to generate beautiful new colors.



47.3129, 4.6196, 14.4419



60.8619, 9.1780, 22.0852



55.2180, -8.6286, 21.1989



26.6476, -0.6782, 3.0904



30.5567, 22.7631, 19.2274



4.9979, 1.0671, 3.0984

Inverse Universe

The Inverse Universe completely reimagines the original color for something new.



46.1354, -6.2102, -12.1008



58.9311, -8.4514, -21.3096



38.3588, 7.2197, -24.8523



26.4988, -2.0621, -0.2798



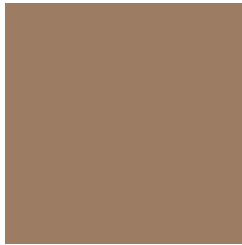
27.8170, 1.5210, -38.0522



4.7095, -1.3586, -2.9536

Previews

White Background



This preview shows how the HunterLab color 47.3118, 4.6214, 14.4413 looks on a white background.

Color Contrast Check

Large Text (above 18pt) WCAG AA ✓ Pass

Any Text WCAG AA × Fail

Large Text (above 18pt) WCAG AAA × Fail

Any Text WCAG AAA × Fail

Black Background



This preview shows how the HunterLab color 47.3118, 4.6214, 14.4413 looks on a black background.

Color Contrast Check

Large Text (above 18pt) WCAG AA ✓ Pass

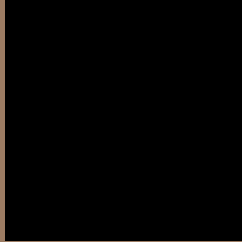
Any Text WCAG AA ✓ Pass

Large Text (above 18pt) WCAG AAA ✓ Pass

Any Text WCAG AAA × Fail

If you want to check with other color combinations, try the [Color Contrast Checker](#).

HunterLab 47.3118, 4.6214, 14.4413 Background



This preview shows how black text looks on a background with the HunterLab color 47.3118, 4.6214, 14.4413.



This preview shows how white text looks on a background with the HunterLab color 47.3118, 4.6214,

Color Blindness Simulation

Color vision deficiency is a very complex topic, and I could not describe the different causes any better than Wikipedia does, so if you want to learn more, you should check out their [article about color blindness](#).

Dichromacy



Original Color

47.3118, 4.6214, 14.4413

Protanopia

47.3429, -3.5656, 13.3676

Deuteranopia

47.2656, 3.0978, 14.3717



Tritanopia

47.3169, 11.4197, 3.3321

Trichromacy



Original Color

47.3118, 4.6214, 14.4413

Protanomaly

47.3262, -0.8045, 13.7238

Deuteranomaly

47.3689, 3.4443, 14.4736

Tritanomaly

47.1719, 9.0529, 7.6830

Monochromacy



Original Color

47.3118, 4.6214, 14.4413

Achromatopsia

47.6409, -2.5420, 2.5884

Achromatomaly

47.2712, -0.1638, 7.2353

CSS Examples

Text

The CSS property to change the color of the text to HunterLab 47.3118, 4.6214, 14.4413 is called "color". The color property can be set on classes, ids or directly on the HTML element.

This example shows how text in the color `rgb(156, 124, 99)` looks like.

```
.text, #text, p{  
    color:rgb(156, 124, 99)  
}
```

If you want to add a text shadow in that color use the text-shadow property, you can generate a text shadow directly with our [CSS Text Shadow Generator](#).

Here you see how black text with a 4 pixel rgb(156, 124, 99) colored shadow looks like.

```
.shadow{ text-shadow: 4px 4px 2px rgb(156, 124, 99) }
```

Border

The CSS property to change the border of an element to HunterLab 47.3118, 4.6214, 14.4413 is called "border". The border property can be set on classes, ids or directly on the HTML element.

This example shows the color as border, it can be applied via the CSS property "border" or "border-color".

```
.border, #border, table{ border:4px solid rgb(156, 124, 99) }
```


If only the border color should be changed use the property `border-color`.

```
.border{ border-color:rgb(156, 124, 99) }
```

If you want to add a box shadow in that color use:

Here you see how a box with a 4 pixel `rgb(156, 124, 99)` colored shadow looks like.

```
.boxshadow{ -moz-box-shadow:4px 4px 4px  
4px rgb(156, 124, 99); -webkit-box-  
shadow:4px 4px 4px 4px rgb(156, 124, 99);  
box-shadow:4px 4px 4px 4px rgb(156, 124,  
99) }
```

Background

The CSS property to change the background color of an element to HunterLab 47.3118, 4.6214, 14.4413 is called "background". The background property can be set on classes, ids or directly on the HTML element.

```
.background, #background, body{  
background: rgb(156, 124, 99) }
```

If only the background color should be changed can be used:

```
.background{ background-color: rgb(156,  
124, 99) }
```

This example shows the color as background, it is applied via the CSS property "background".

To optimize and compress your CSS code, you can use our [online CSS compressor and optimizer](#) based on csstidy. If you want to create a linear or radial gradient as background or border, check our [CSS Gradient Generator](#).

Hey! You found this booklet interesting? Support Converting Colors with the new Membership Option!

The pro membership hides all ads, plus gives you double the colors in the color bucket, and more awesome pro features!

[Learn more, Memberships starting at \\$2.50/m!](#)

**Follow me
on Twitter!**

@ConvertingColor