

Converting Colors

HunterLab(47.3732, 17.1848,
22.0865)

Have a look what the booklet for
HunterLab(47.3732, 17.1848,
22.0865) contains.

HunterLab(47.4940, 17.1702, 22.1244)	3
<i>Conversions</i>	4
<i>Details</i>	6
<i>Harmonies</i>	12
<i>Previews</i>	24
<i>Color Blindness Simulation</i>	28
<i>CSS Examples</i>	31

Color

**HunterLab(47.4940, 17.1702,
22.1244)**

Conversions

Conversions Part 1

Format	Color
Hex	B77247
RGB	183, 114, 71
RGB Percent	72%, 45%, 28%
CMY	0.2824, 0.5529, 0.7216
CMYK	0.00, 0.38, 0.61, 0.28
HSL	23°, 44%, 50%
HSV	23°, 61%, 72%
XYZ	26.6830, 22.5568, 8.9087
YIQ	129.7290, 54.9270, 1.2550

Conversions

Conversions Part 2

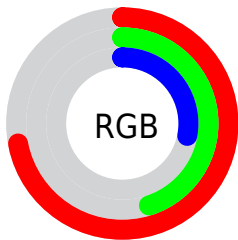
Format	Color
R_{YB}	183, 141, 71
Decimal	12022343
CIE _{Lab}	54.61, 23.02, 34.92
CIE _{LCh}	55, 41.828, 56.603
Yxy	22.5579, 0.4589, 0.3879
Android (android.graphics.Color)	4290212423 (0xFFB77247)
YUV	129.7290, -28.9534, 46.7187
Hunter-Lab	47.4940, 17.1702, 22.1244

Details

The HunterLab color **47.4940, 17.1702, 22.1244** is a dark color, and the websafe version is hex **996633**. A complement of this color would be **48.4906, -9.3099, -25.0602**, and the grayscale version is **47.2364, -2.5204, 2.5664**.

A 20% lighter version of the original color is **68.9421, 18.4014, 27.2473**, and **28.7861, 15.7877, 16.1200** is the 20% darker color. If you saturate the color by 10%, you get **44.6864, 21.6121, 23.4927**, and if you desaturate by 10%, it is **50.5286, 13.0083, 20.1953**.

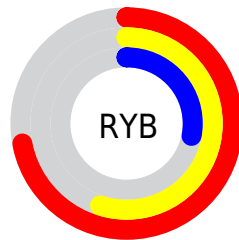
Distribution



Red (72%)

Green (45%)

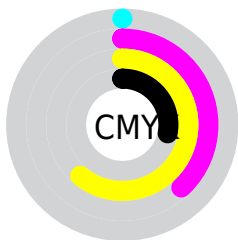
Blue (28%)



Red (72%)

Yellow (55%)

Blue (28%)

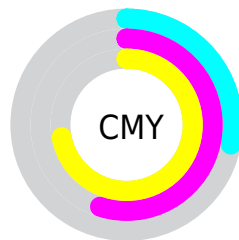


Cyan (0%)

Magenta (38%)

Yellow (61%)

Black (28%)



Cyan (28%)

Magenta (55%)

Yellow (72%)

Brightness & Saturation Gradients

These gradients show how the HunterLab color 47.4940, 17.1702, 22.1244 changes by changing the brightness by 10 percent. The first figure shows a shift by +10% for each color and the second figure -10%.

Similar to the brightness gradients but the following saturation gradients show a change of the HunterLab color 47.4940, 17.1702, 22.1244 by changing the saturation by 10% instead.

47.4940, 17.1702,
22.1244

47.4940, 17.1702,
22.1244

162.9252, 19.8038,
43.8525

37.7723, 16.4614,
19.2421

69.0409, 18.2721,
27.4629

28.8217, 15.6334,
16.1597

80.7795, 18.6925,
29.9762

20.7170, 14.6654,
12.9979

93.1169, 19.0362,
32.4127

13.5580, 13.5392,
9.4906

106.0254, 19.3099,
34.7869

7.1471, 14.0857,
5.0029

119.4807, 19.5191,
37.1098

0.0000, NaN, NaN

0.0000, NaN, NaN

133.4615, 19.6686,

39.3905

0.0000, NaN, NaN

147.9487, 19.7623,
41.6361

0.0000, NaN, NaN

■ 47.4940, 17.1702,
22.1244

■ 47.4940, 17.1702,
22.1244

■ 44.6864, 21.6121,
23.4927

■ 50.5286, 13.0083,
20.1953

■ 42.1258, 26.2941,
24.2451

■ 53.7639, 9.1539,
17.7662

■ 39.8364, 31.1264,
24.3564

■ 57.1804, 5.6047,
14.9002

■ 38.0538, 35.3595,
24.0676

■ 60.7595, 2.3489,
11.6547

■ 64.4847, -0.6321,
8.0802

■ 68.3417, -3.3599,
4.2200

■ 72.3182, -5.8573,
0.1106

■ 76.4034, -8.1462,
-4.2174

■ 80.5878, -10.2473,
-8.7383

Harmonies

Analogous

The Analogous color harmony consists of three colors that are next to each other on the color wheel.



47.4952, 30.9666, 14.6713



47.4940, 17.1702, 22.1244



47.4952, -0.5521, 24.5496

Triad

The Triadic color harmony groups three colors that are evenly spaced from another and form a triangle on the color wheel.



47.4952, 17.1675, 22.1250



47.4952, -31.3581, 4.4201



47.4952, 13.2739, -35.2402

Complementary

The Complementary color scheme is a pair of colors which are on the opposite of each other on the color wheel.



47.4940, 17.1702, 22.1244



48.4906, -9.3099, -25.0602

Split Complementary

Split-complementary colors differ from the complementary color scheme. The scheme consists of three colors, the original color and two neighbors of the complement color.



47.4952, -4.4894, -41.0174



47.4940, 17.1702, 22.1244



47.4952, -28.7403, -13.8551

Square

The Square scheme is like the rectangle color scheme, but the four colors are evenly spaced on the color wheel.



47.4952, 17.1675, 22.1250



47.4952, -27.2117, 16.8982



47.4952, -19.4746, -32.0898



47.4952, 28.5024, -18.3068

Rectangle

The Rectangle color scheme consists of four colors that form a rectangle on the color wheel.



47.4940, 17.1702, 22.1244



47.4952, -11.6613, 23.9934



47.4952, -19.4746, -32.0898



47.4952, 7.3332, -38.7645

Sweetspot

The Sweet Spot groups the original color and five complimentary colors.



47.4952, 17.1675, 22.1250



82.7418, 1.9483, 14.2507



40.5823, 45.6290, -10.4806



38.2138, 1.4780, 7.3309



96.5975, -5.1542, 5.2483



43.2801, -2.3093, 2.3515

Same Dimension

The Same Dimension uses a secret algorithm to generate beautiful new colors.



47.4952, 17.1675, 22.1250



58.7370, 30.7766, 31.8315



62.6470, -9.8275, 32.7888



30.9232, -0.5495, 3.5015



31.9785, 29.0213, 20.2131



6.9404, 3.2166, 4.3329

Inverse Universe

The Inverse Universe completely reimagines the original color for something new.



48.4906, -9.3099, -25.0602



60.1816, -10.6235, -42.1494



33.3312, 18.3665, -58.8299



31.0092, -2.6359, -0.2105



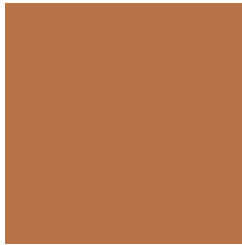
32.7393, -2.0663, -36.4608



7.0264, -1.7532, -4.9978

Previews

White Background



This preview shows how the HunterLab color 47.4940, 17.1702, 22.1244 looks on a white background.

Color Contrast Check

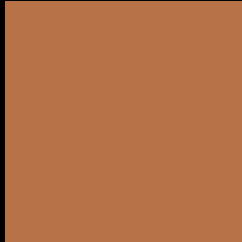
Large Text (above 18pt) WCAG AA ✓ Pass

Any Text WCAG AA × Fail

Large Text (above 18pt) WCAG AAA × Fail

Any Text WCAG AAA × Fail

Black Background



This preview shows how the HunterLab color 47.4940, 17.1702, 22.1244 looks on a black background.

Color Contrast Check

Large Text (above 18pt) WCAG AA ✓ Pass

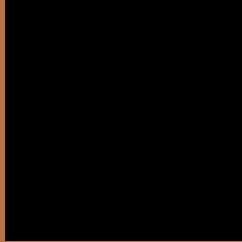
Any Text WCAG AA ✓ Pass

Large Text (above 18pt) WCAG AAA ✓ Pass

Any Text WCAG AAA × Fail

If you want to check with other color combinations, try the [Color Contrast Checker](#).

HunterLab 47.4940, 17.1702, 22.1244 Background



This preview shows how black text looks on a background with the HunterLab color 47.4940, 17.1702, 22.1244.



This preview shows how white text looks on a background with the HunterLab color 47.4940, 17.1702,

Color Blindness Simulation

Color vision deficiency is a very complex topic, and I could not describe the different causes any better than Wikipedia does, so if you want to learn more, you should check out their [article about color blindness](#).

Dichromacy



Original Color

47.4940, 17.1702, 22.1244

Protanopia

47.6421, -4.8527, 20.5341

Deuteranopia

47.6172, 3.2851, 22.3886



Tritanopia

47.3552, 25.5533, 8.9402

Trichromacy



Original Color

47.4940, 17.1702, 22.1244

Protanomaly

47.3754, 2.6371, 20.9080

Deuteranomaly

47.4889, 8.2516, 22.1726

Tritanomaly

47.3141, 22.3962, 14.4385

Monochromacy



Original Color

47.4940, 17.1702, 22.1244

Achromatopsia

47.2470, -2.5210, 2.5670

Achromatomaly

46.8070, 3.3673, 10.5748

CSS Examples

Text

The CSS property to change the color of the text to HunterLab 47.4940, 17.1702, 22.1244 is called "color". The color property can be set on classes, ids or directly on the HTML element.

This example shows how text in the color `rgb(183, 114, 71)` looks like.

```
.text, #text, p{  
    color:rgb(183, 114, 71)  
}
```

If you want to add a text shadow in that color use the text-shadow property, you can generate a text shadow directly with our [CSS Text Shadow Generator](#).

Here you see how black text with a 4 pixel rgb(183, 114, 71) colored shadow looks like.

```
.shadow{ text-shadow: 4px 4px 2px rgb(183, 114, 71) }
```

Border

The CSS property to change the border of an element to HunterLab 47.4940, 17.1702, 22.1244 is called "border". The border property can be set on classes, ids or directly on the HTML element.

This example shows the color as border, it can be applied via the CSS property "border" or "border-color".

```
.border, #border, table{ border:4px solid rgb(183, 114, 71) }
```


If only the border color should be changed use the property border-color.

```
.border{ border-color:rgb(183, 114, 71) }
```

If you want to add a box shadow in that color use:

Here you see how a box with a 4 pixel rgb(183, 114, 71) colored shadow looks like.

```
.boxshadow{ -moz-box-shadow:4px 4px 4px  
4px rgb(183, 114, 71); -webkit-box-  
shadow:4px 4px 4px 4px rgb(183, 114, 71);  
box-shadow:4px 4px 4px 4px rgb(183, 114,  
71) }
```

Background

The CSS property to change the background color of an element to HunterLab 47.4940, 17.1702, 22.1244 is called "background". The background property can be set on classes, ids or directly on the HTML element.

```
.background, #background, body{  
background: rgb(183, 114, 71) }
```

If only the background color should be changed can be used:

```
.background{ background-color: rgb(183,  
114, 71) }
```

This example shows the color as background, it is applied via the CSS property "background".

To optimize and compress your CSS code, you can use our [online CSS compressor and optimizer](#) based on csstidy. If you want to create a linear or radial gradient as background or border, check our [CSS Gradient Generator](#).

Hey! You found this booklet interesting? Support Converting Colors with the new Membership Option!

The pro membership hides all ads, plus gives you double the colors in the color bucket, and more awesome pro features!

[Learn more, Memberships starting at \\$2.50/m!](#)

**Follow me
on Twitter!**

@ConvertingColor