

Converting Colors

HunterLab(47.3778, 20.6181,
11.4583)

Have a look what the booklet for
HunterLab(47.3778, 20.6181,
11.4583) contains.

HunterLab(47.3242, 20.4444, 11.3926)	3
<i>Conversions</i>	4
<i>Details</i>	6
<i>Harmonies</i>	12
<i>Previews</i>	24
<i>Color Blindness Simulation</i>	28
<i>CSS Examples</i>	31

Color

**HunterLab(47.3242, 20.4444,
11.3926)**

Conversions

Conversions Part 1

Format	Color
Hex	B4706D
RGB	180, 112, 109
RGB Percent	71%, 44%, 43%
CMY	0.2941, 0.5608, 0.5725
CMYK	0.00, 0.38, 0.39, 0.29
HSL	3°, 32%, 57%
HSV	3°, 39%, 71%
XYZ	27.3769, 22.3958, 17.3480
YIQ	131.9900, 41.4910, 13.4830

Conversions

Conversions Part 2

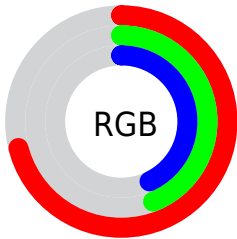
Format	Color
RYB	180, 112, 109
Decimal	11825261
CIELab	54.45, 26.56, 13.03
CIELCh	54, 29.589, 26.134
Yxy	22.3969, 0.4079, 0.3337
Android (android.graphics.Color)	4290015341 (0xFFB4706D)
YUV	131.9900, -11.3341, 42.1048
Hunter-Lab	47.3242, 20.4444, 11.3926

Details

The HunterLab color **47.3242, 20.4444, 11.3926** is a dark color, and the websafe version is hex **996666**. A complement of this color would be **61.6355, -20.2088, -3.9112**, and the grayscale version is **48.0643, -2.5646, 2.6114**.

A 20% lighter version of the original color is **68.7504, 22.1759, 14.0706**, and **28.7451, 18.6522, 8.6389** is the 20% darker color. If you saturate the color by 10%, you get **43.1290, 27.0907, 13.4435**, and if you desaturate by 10%, it is **51.9619, 13.9629, 9.3523**.

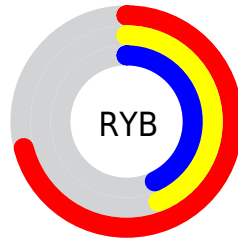
Distribution



Red (71%)

Green (44%)

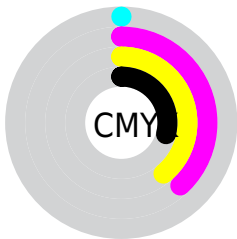
Blue (43%)



Red (71%)

Yellow (44%)

Blue (43%)

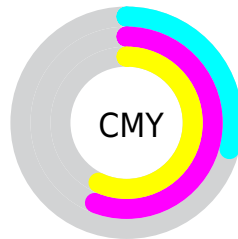


Cyan (0%)

Magenta (38%)

Yellow (39%)

Black (29%)



Cyan (29%)

Magenta (56%)

Yellow (57%)

Brightness & Saturation Gradients

These gradients show how the HunterLab color 47.3242, 20.4444, 11.3926 changes by changing the brightness by 10 percent. The first figure shows a shift by +10% for each color and the second figure -10%.

Similar to the brightness gradients but the following saturation gradients show a change of the HunterLab color 47.3242, 20.4444, 11.3926 by changing the saturation by 10% instead.

■ 47.3242, 20.4444,
11.3926

■ 47.3242, 20.4444,
11.3926

162.6690, 24.3507,
23.0088

■ 37.6149, 19.5683,
10.0659

■ 68.8485, 21.8638,
13.9861

■ 28.6780, 18.5675,
8.6988

■ 80.5767, 22.4342,
15.2682

■ 20.5883, 17.4239,
7.2668

■ 92.9043, 22.9229,
16.5480

■ 13.4462, 16.1284,
5.7521

■ 105.8034, 23.3368,
17.8289

■ 7.0154, 16.9113,
4.9108

119.2497, 23.6818,
19.1137

0.0000, INF, NaN

0.0000, NaN, NaN

133.2218, 23.9630,

20.4043

0.0000, NaN, NaN

147.7006, 24.1847,
21.7023

0.0000, NaN, NaN

■ 47.3242, 20.4444,
11.3926

■ 47.3242, 20.4444,
11.3926

■ 43.1290, 27.0907,
13.4435

■ 51.9619, 13.9629,
9.3523

■ 39.4542, 33.7278,
15.4293

■ 56.9687, 7.7351,
7.3592

■ 36.3886, 40.0349,
17.2340

■ 62.2885, 1.7795,
5.4303

■ 34.0123, 45.5564,
18.7046

■ 67.8753, -3.9150,
3.5688

■ 32.3741, 49.7876,
19.6920

■ 73.6921, -9.3739,
1.7712

■ 31.4510, 52.3467,
20.2422

■ 79.7096, -14.6274,
0.0311

■ 31.4144, 52.4455,
20.2755

■ 85.9040, -19.7054,
-1.6589

■ 92.2562, -24.6354,
-3.3061

■ 94.0443, -26.7182,
-2.1633

Harmonies

Analogous

The Analogous color harmony consists of three colors that are next to each other on the color wheel.



47.3254, 23.2416, 1.0457



47.3242, 20.4444, 11.3926



47.3254, 11.2754, 17.6187

Triad

The Triadic color harmony groups three colors that are evenly spaced from another and form a triangle on the color wheel.



47.3254, 20.4420, 11.3934



47.3254, -20.4831, 13.4059



47.3254, -4.1000, -25.5549

Complementary

The Complementary color scheme is a pair of colors which are on the opposite of each other on the color wheel.



47.3242, 20.4444, 11.3926



61.6355, -20.2088, -3.9112

Split Complementary

Split-complementary colors differ from the complementary color scheme. The scheme consists of three colors, the original color and two neighbors of the complement color.



47.3254, -14.9102, -19.9673



47.3242, 20.4444, 11.3926



47.3254, -23.7433, 4.0570

Square

The Square scheme is like the rectangle color scheme, but the four colors are evenly spaced on the color wheel.



47.3254, 20.4420, 11.3934



47.3254, -12.4290, 18.5572



47.3254, -21.8104, -8.3520



47.3254, 8.2611, -22.1734

Rectangle

The Rectangle color scheme consists of four colors that form a rectangle on the color wheel.



47.3242, 20.4444, 11.3926



47.3254, 3.2299, 19.5308



47.3254, -21.8104, -8.3520



47.3254, -8.0226, -24.6329

Sweetspot

The Sweet Spot groups the original color and five complimentary colors.



47.3254, 20.4420, 11.3934



81.8585, 4.5745, 8.0203



48.8267, 32.5996, -20.2540



37.6283, 2.5982, 3.8816



95.4677, -5.0939, 5.1869



42.2927, -2.2566, 2.2978

Same Dimension

The Same Dimension uses a secret algorithm to generate beautiful new colors.



47.3254, 20.4420, 11.3934



58.9570, 35.0038, 17.6525



56.2438, 3.1182, 19.4598



29.2592, 0.7999, 2.5365



26.2923, 43.6527, 16.9654



4.8632, 7.0906, 3.1208

Inverse Universe

The Inverse Universe completely reimagines the original color for something new.



61.6355, -20.2088, -3.9112



81.7574, -30.4670, -6.9336



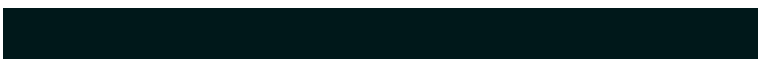
50.9239, -4.1572, -18.9676



30.9333, -3.8651, 0.7724



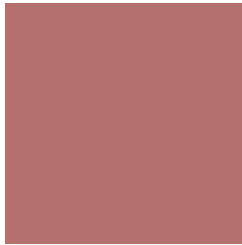
47.9796, -24.0297, -8.0972



8.6205, -4.3952, -1.2868

Previews

White Background



This preview shows how the HunterLab color 47.3242, 20.4444, 11.3926 looks on a white background.

Color Contrast Check

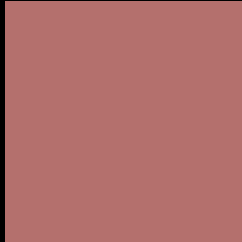
Large Text (above 18pt) WCAG AA ✓ Pass

Any Text WCAG AA × Fail

Large Text (above 18pt) WCAG AAA × Fail

Any Text WCAG AAA × Fail

Black Background



This preview shows how the HunterLab color 47.3242, 20.4444, 11.3926 looks on a black background.

Color Contrast Check

Large Text (above 18pt) WCAG AA ✓ Pass

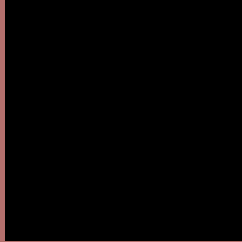
Any Text WCAG AA ✓ Pass

Large Text (above 18pt) WCAG AAA ✓ Pass

Any Text WCAG AAA × Fail

If you want to check with other color combinations, try the [Color Contrast Checker](#).

HunterLab 47.3242, 20.4444, 11.3926 Background



This preview shows how black text looks on a background with the HunterLab color 47.3242, 20.4444, 11.3926.



This preview shows how white text looks on a background with the HunterLab color 47.3242, 20.4444,

Color Blindness Simulation

Color vision deficiency is a very complex topic, and I could not describe the different causes any better than Wikipedia does, so if you want to learn more, you should check out their [article about color blindness](#).

Dichromacy



Original Color

47.3242, 20.4444, 11.3926

Protanopia

47.4421, -2.4840, 7.7702

Deuteranopia

47.6011, 3.1845, 12.0617



Tritanopia

47.4600, 22.5189, 7.8358

Trichromacy



Original Color

47.3242, 20.4444, 11.3926

Protanomaly

46.9884, 5.6229, 8.5865

Deuteranomaly

47.3696, 9.2155, 11.5927

Tritanomaly

47.3608, 22.0271, 9.2641

Monochromacy



Original Color

47.3242, 20.4444, 11.3926

Achromatopsia

48.0354, -2.5630, 2.6099

Achromatomaly

47.4468, 4.8739, 5.4933

CSS Examples

Text

The CSS property to change the color of the text to HunterLab 47.3242, 20.4444, 11.3926 is called "color". The color property can be set on classes, ids or directly on the HTML element.

This example shows how text in the color `rgb(180, 112, 109)` looks like.

```
.text, #text, p{  
    color:rgb(180, 112, 109)  
}
```

If you want to add a text shadow in that color use the text-shadow property, you can generate a text shadow directly with our [CSS Text Shadow Generator](#).

Here you see how black text with a 4 pixel rgb(180, 112, 109) colored shadow looks like.

```
.shadow{ text-shadow: 4px 4px 2px rgb(180, 112, 109) }
```

Border

The CSS property to change the border of an element to HunterLab 47.3242, 20.4444, 11.3926 is called "border". The border property can be set on classes, ids or directly on the HTML element.

This example shows the color as border, it can be applied via the CSS property "border" or "border-color".

```
.border, #border, table{ border:4px solid rgb(180, 112, 109) }
```


If only the border color should be changed use the property `border-color`.

```
.border{ border-color:rgb(180, 112, 109) }
```

If you want to add a box shadow in that color use:

Here you see how a box with a 4 pixel `rgb(180, 112, 109)` colored shadow looks like.

```
.boxshadow{ -moz-box-shadow:4px 4px 4px  
4px rgb(180, 112, 109); -webkit-box-  
shadow:4px 4px 4px 4px rgb(180, 112, 109);  
box-shadow:4px 4px 4px 4px rgb(180, 112,  
109) }
```

Background

The CSS property to change the background color of an element to HunterLab 47.3242, 20.4444, 11.3926 is called "background". The background property can be set on classes, ids or directly on the HTML element.

```
.background, #background, body{  
background: rgb(180, 112, 109) }
```

If only the background color should be changed can be used:

```
.background{ background-color: rgb(180,  
112, 109) }
```

This example shows the color as background, it is applied via the CSS property "background".

To optimize and compress your CSS code, you can use our [online CSS compressor and optimizer](#) based on csstidy. If you want to create a linear or radial gradient as background or border, check our [CSS Gradient Generator](#).

Hey! You found this booklet interesting? Support Converting Colors with the new Membership Option!

The pro membership hides all ads, plus gives you double the colors in the color bucket, and more awesome pro features!

[Learn more, Memberships starting at \\$2.50/m!](#)

**Follow me
on Twitter!**

@ConvertingColor