

Converting Colors

HunterLab(47.3926, 69.2347,
14.6040)

Have a look what the booklet for
HunterLab(47.3926, 69.2347,
14.6040) contains.

HunterLab(47.3104, 69.2165, 14.6109)	3
<i>Conversions</i>	4
<i>Details</i>	6
<i>Harmonies</i>	12
<i>Previews</i>	24
<i>Color Blindness Simulation</i>	28
<i>CSS Examples</i>	31

Color

**HunterLab(47.3104, 69.2165,
14.6109)**

Conversions

Conversions Part 1

Format	Color
Hex	F23566
RGB	242, 53, 102
RGB Percent	95%, 21%, 40%
CMY	0.0510, 0.7921, 0.6000
CMYK	0.00, 0.78, 0.58, 0.05
HSL	344°, 88%, 58%
HSV	344°, 78%, 95%
XYZ	40.2893, 22.3827, 14.7671
YIQ	115.0970, 96.9150, 55.3070

Conversions

Conversions Part 2

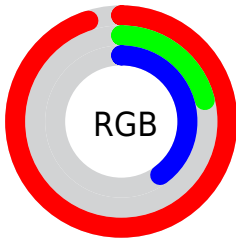
Format	Color
R_{YB}	242, 53, 102
Decimal	15873382
CIE _{Lab}	54.43, 72.01, 18.68
CIE _{LCh}	54, 74.393, 14.541
Yxy	22.3841, 0.5203, 0.2890
Android (android.graphics.Color)	4294063462 (0xFFFF23566)
YUV	115.0970, -6.4568, 111.2939
Hunter-Lab	47.3104, 69.2165, 14.6109

Details

The HunterLab color **47.3104, 69.2165, 14.6109** is a dark color, and the websafe version is hex **FF3366**. The color can be described as middle washed rose. A complement of this color would be **82.5301, -51.7535, 13.6975**, and the grayscale version is **41.4435, -2.2113, 2.2517**.

A 20% lighter version of the original color is **60.2349, 52.6892, 8.3747**, and **31.4153, 54.7086, 13.2547** is the 20% darker color. If you saturate the color by 10%, you get **45.1532, 73.7961, 18.0819**, and if you desaturate by 10%, it is **50.5662, 62.1443, 11.4387**.

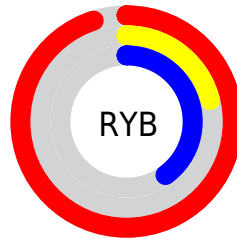
Distribution



Red (95%)

Green (21%)

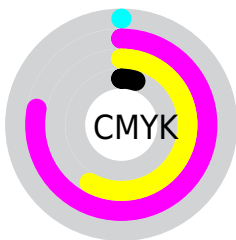
Blue (40%)



Red (95%)

Yellow (21%)

Blue (40%)

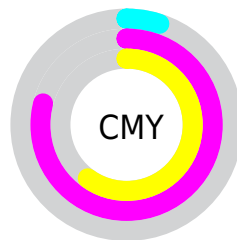


Cyan (0%)

Magenta (78%)

Yellow (58%)

Black (5%)



Cyan (5%)

Magenta (79%)

Yellow (60%)

Brightness & Saturation Gradients

These gradients show how the HunterLab color 47.3104, 69.2165, 14.6109 changes by changing the brightness by 10 percent. The first figure shows a shift by +10% for each color and the second figure -10%.

Similar to the brightness gradients but the following saturation gradients show a change of the HunterLab color 47.3104, 69.2165, 14.6109 by changing the saturation by 10% instead.

47.3104, 69.2165,
14.6109

47.3104, 69.2165,
14.6109

162.6485, 86.8078,
28.7196

37.6024, 66.8749,
12.9009

68.8331, 73.7392,
17.8795

28.6665, 64.5815,
11.1077

80.5605, 75.8795,
19.4642

20.5780, 62.5228,
9.1926

92.8873, 77.9268,
21.0286

13.4373, 61.2113,
7.4918

105.7856, 79.8806,
22.5789

7.0048, 67.2266,
4.9033

119.2312, 81.7424,
24.1199

0.0000, INF, NaN

0.0000, INF, NaN

133.2026, 83.5152,

25.6551

0.0000, NaN, NaN

147.6808, 85.2025,
27.1876

0.0000, NaN, NaN

■ 47.3104, 69.2165,
14.6109

■ 47.3104, 69.2165,
14.6109

■ 45.1532, 73.7961,
18.0819

■ 50.5662, 62.1443,
11.4387

■ 44.0141, 75.6880,
21.4728


■ 54.8599, 53.3054,
8.8107

■ 43.8554, 75.9151,
22.0489


■ 60.0779, 43.4559,
6.8359


■ 66.0875, 33.1872,
5.5113

■ 72.7631, 22.8741,
4.7733

 79.9969, 12.7171,
4.5370

 87.7004, 2.8025,
4.7182

 95.8027, -6.8484,
5.2433

 98.8014, -9.5307,
3.9407

Harmonies

Analogous

The Analogous color harmony consists of three colors that are next to each other on the color wheel.



47.3118, 68.8370, -14.9638



47.3104, 69.2165, 14.6109



47.3118, 47.3055, 27.4530

Triad

The Triadic color harmony groups three colors that are evenly spaced from another and form a triangle on the color wheel.



47.3118, 69.2116, 14.6120



47.3118, -37.2102, 27.6575



47.3118, -17.2511, -89.7597

Complementary

The Complementary color scheme is a pair of colors which are on the opposite of each other on the color wheel.



47.3104, 69.2165, 14.6109



82.5301, -51.7535, 13.6975

Split Complementary

Split-complementary colors differ from the complementary color scheme. The scheme consists of three colors, the original color and two neighbors of the complement color.



47.3118, -37.6676, -56.1393



47.3104, 69.2165, 14.6109



47.3118, -47.0258, 15.2277

Square

The Square scheme is like the rectangle color scheme, but the four colors are evenly spaced on the color wheel.



47.3118, 69.2116, 14.6120



47.3118, -16.4493, 31.0590



47.3118, -47.1685, -13.7966



47.3118, 13.2183, -90.3501

Rectangle

The Rectangle color scheme consists of four colors that form a rectangle on the color wheel.



47.3104, 69.2165, 14.6109



47.3118, 25.6052, 30.3927



47.3118, -47.1685, -13.7966



47.3118, -25.3150, -81.3097

Sweetspot

The Sweet Spot groups the original color and five complimentary colors.



47.3118, 69.2116, 14.6120



81.0116, 18.8262, 4.8788



44.8477, 76.4980, -82.0816



36.2089, 10.5236, 2.3134

0.0000, NaN, NaN



46.2646, -2.4686, 2.5136

Same Dimension

The Same Dimension uses a secret algorithm to generate beautiful new colors.



47.3118, 69.2116, 14.6120



47.0660, 79.8412, 21.4541



52.6349, 48.7823, 29.4913



39.7820, 1.9077, 2.1455



32.1730, 55.7501, 15.7292



9.3639, 16.3905, 3.3028

Inverse Universe

The Inverse Universe completely reimagines the original color for something new.



47.3118, 69.2116, 14.6120



47.0660, 79.8412, 21.4541



68.9289, -23.0800, -30.1873



39.7820, 1.9077, 2.1455



32.1730, 55.7501, 15.7292



9.3639, 16.3905, 3.3028

Previews

White Background



This preview shows how the HunterLab color 47.3104, 69.2165, 14.6109 looks on a white background.

Color Contrast Check

Large Text (above 18pt) WCAG AA ✓ Pass

Any Text WCAG AA × Fail

Large Text (above 18pt) WCAG AAA × Fail

Any Text WCAG AAA × Fail

Black Background



This preview shows how the HunterLab color 47.3104, 69.2165, 14.6109 looks on a black background.

Color Contrast Check

Large Text (above 18pt) WCAG AA ✓ Pass

Any Text WCAG AA ✓ Pass

Large Text (above 18pt) WCAG AAA ✓ Pass

Any Text WCAG AAA × Fail

If you want to check with other color combinations, try the [Color Contrast Checker](#).

HunterLab 47.3104, 69.2165, 14.6109 Background



This preview shows how black text looks on a background with the HunterLab color 47.3104, 69.2165, 14.6109.



This preview shows how white text looks on a background with the HunterLab color 47.3104, 69.2165, 14.6109.

Color Blindness Simulation

Color vision deficiency is a very complex topic, and I could not describe the different causes any better than Wikipedia does, so if you want to learn more, you should check out their [article about color blindness](#).

Dichromacy



Original Color

47.3104, 69.2165, 14.6109

Protanopia

47.5663, -0.9447, -0.6775

Deuteranopia

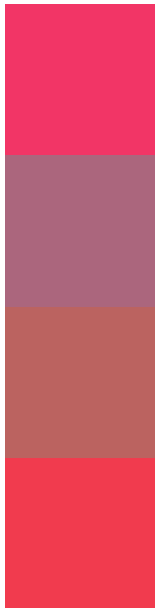
47.3562, 3.1684, 16.2705



Tritanopia

47.2659, 62.9943, 24.1435

Trichromacy



Original Color

47.3104, 69.2165, 14.6109

Protanomaly

44.3185, 24.1314, 1.7750

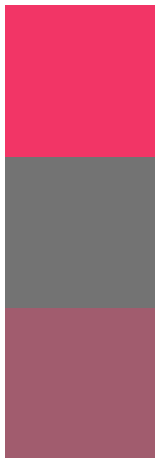
Deuteranomaly

45.0921, 28.2339, 13.7291

Tritanomaly

47.3062, 65.1828, 21.2574

Monochromacy



Original Color

47.3104, 69.2165, 14.6109

Achromatopsia

41.4054, -2.2093, 2.2496

Achromatomaly

40.4440, 23.4055, 3.7052

CSS Examples

Text

The CSS property to change the color of the text to HunterLab 47.3104, 69.2165, 14.6109 is called "color". The color property can be set on classes, ids or directly on the HTML element.

This example shows how text in the color `rgb(242, 53, 102)` looks like.

```
.text, #text, p{  
    color:rgb(242, 53, 102)  
}
```

If you want to add a text shadow in that color use the text-shadow property, you can generate a text shadow directly with our [CSS Text Shadow Generator](#).

Here you see how black text with a 4 pixel rgb(242, 53, 102) colored shadow looks like.

```
.shadow{ text-shadow: 4px 4px 2px rgb(242, 53, 102) }
```

Border

The CSS property to change the border of an element to HunterLab 47.3104, 69.2165, 14.6109 is called "border". The border property can be set on classes, ids or directly on the HTML element.

This example shows the color as border, it can be applied via the CSS property "border" or "border-color".

```
.border, #border, table{ border:4px solid rgb(242, 53, 102) }
```


If only the border color should be changed use the property `border-color`.

```
.border{ border-color:rgb(242, 53, 102) }
```

If you want to add a box shadow in that color use:

Here you see how a box with a 4 pixel `rgb(242, 53, 102)` colored shadow looks like.

```
.boxshadow{ -moz-box-shadow:4px 4px 4px  
4px rgb(242, 53, 102); -webkit-box-  
shadow:4px 4px 4px 4px rgb(242, 53, 102);  
box-shadow:4px 4px 4px 4px rgb(242, 53,  
102) }
```

Background

The CSS property to change the background color of an element to HunterLab 47.3104, 69.2165, 14.6109 is called "background". The background property can be set on classes, ids or directly on the HTML element.

```
.background, #background, body{  
background: rgb(242, 53, 102) }
```

If only the background color should be changed can be used:

```
.background{ background-color: rgb(242, 53,  
102) }
```

This example shows the color as background, it is applied via the CSS property "background".

To optimize and compress your CSS code, you can use our [online CSS compressor and optimizer](#) based on csstidy. If you want to create a linear or radial gradient as background or border, check our [CSS Gradient Generator](#).

Hey! You found this booklet interesting? Support Converting Colors with the new Membership Option!

The pro membership hides all ads, plus gives you double the colors in the color bucket, and more awesome pro features!

[Learn more, Memberships starting at \\$2.50/m!](#)

**Follow me
on Twitter!**

@ConvertingColor