

Converting Colors

HunterLab(47.4075, 10.1073,
15.8492)

Have a look what the booklet for
HunterLab(47.4075, 10.1073,
15.8492) contains.

HunterLab(47.4074, 10.1074, 15.8491)	3
<i>Conversions</i>	4
<i>Details</i>	6
<i>Harmonies</i>	12
<i>Previews</i>	24
<i>Color Blindness Simulation</i>	28
<i>CSS Examples</i>	31

Color

**HunterLab(47.4074, 10.1074,
15.8491)**

Conversions

Conversions Part 1

Format	Color
Hex	A7785F
RGB	167, 120, 95
RGB Percent	65%, 47%, 37%
CMY	0.3451, 0.5294, 0.6274
CMYK	0.00, 0.28, 0.43, 0.35
HSL	21°, 29%, 51%
HSV	21°, 43%, 65%
XYZ	24.7183, 22.4746, 13.8617
YIQ	131.2030, 36.0370, 2.1890

Conversions

Conversions Part 2

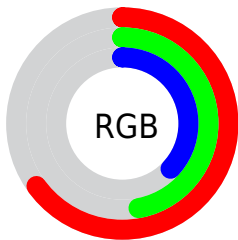
Format	Color
R_{YB}	167, 133, 95
Decimal	10975327
CIE _{Lab}	54.53, 15.15, 20.99
CIE _{LCh}	55, 25.886, 54.170
Yxy	22.4757, 0.4049, 0.3681
Android (android.graphics.Color)	4289165407 (0xFFA7785F)
YUV	131.2030, -17.8481, 31.3940
Hunter-Lab	47.4074, 10.1074, 15.8491

Details

The HunterLab color **47.4074, 10.1074, 15.8491** is a dark color, and the websafe version is hex **996666**. A complement of this color would be **49.5660, -9.7927, -13.3605**, and the grayscale version is **47.7800, -2.5494, 2.5960**.

A 20% lighter version of the original color is **68.8677, 10.8436, 19.2137**, and **28.6890, 9.5045, 12.0654** is the 20% darker color. If you saturate the color by 10%, you get **44.4177, 13.9027, 17.9166**, and if you desaturate by 10%, it is **50.5823, 6.5771, 13.4178**.

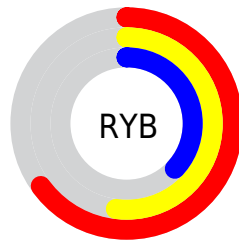
Distribution



Red (65%)

Green (47%)

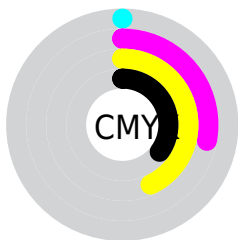
Blue (37%)



Red (65%)

Yellow (52%)

Blue (37%)

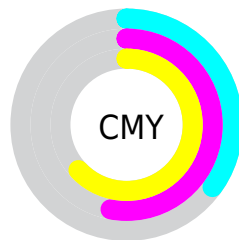


Cyan (0%)

Magenta (28%)

Yellow (43%)

Black (35%)



Cyan (35%)

Magenta (53%)

Yellow (63%)

Brightness & Saturation Gradients

These gradients show how the HunterLab color 47.4074, 10.1074, 15.8491 changes by changing the brightness by 10 percent. The first figure shows a shift by +10% for each color and the second figure -10%.

Similar to the brightness gradients but the following saturation gradients show a change of the HunterLab color 47.4074, 10.1074, 15.8491 by changing the saturation by 10% instead.

■ 47.4074, 10.1074,
15.8491

■ 47.4074, 10.1074,
15.8491

162.7945, 9.8514,
31.0020

■ 37.6920, 9.7892,
13.9778

■ 68.9427, 10.4808,
19.4006

■ 28.7483, 9.3699,
12.0061

■ 80.6760, 10.5590,
21.1124

■ 20.6513, 8.8285,
9.8900

■ 93.0084, 10.5736,
22.7962

■ 13.5009, 8.1385,
8.2038

■ 105.9121, 10.5299,
24.4594

■ 7.0802, 8.9481,
4.9561

119.3629, 10.4323,
26.1076

0.0000, NaN, NaN

0.0000, NaN, NaN

133.3392, 10.2847,

27.7453

0.0000, NaN, NaN

147.8222, 10.0901,
29.3758

0.0000, NaN, NaN

■ 47.4074, 10.1074,
15.8491

■ 47.4074, 10.1074,
15.8491

■ 44.4177, 13.9027,
17.9166

■ 50.5823, 6.5771,
13.4178

■ 41.6322, 17.9610,
19.5590

■ 53.9191, 3.3121,
10.6739

■ 39.0765, 22.2484,
20.7165

■ 57.4014, 0.2952,
7.6641

■ 36.7761, 26.7001,
21.3371

■ 61.0141, -2.4925,
4.4266

■ 34.7553, 31.2082,
21.3960

■ 64.7443, -5.0718,
0.9933

■ 33.5277, 34.2248,
21.2588

■ 68.5808, -7.4632,
-2.6098

■ 72.5140, -9.6860,
-6.3615

■ 76.5356, -11.7583,
-10.2443

■ 80.6385, -13.6962,
-14.2439

Harmonies

Analogous

The Analogous color harmony consists of three colors that are next to each other on the color wheel.



47.4085, 17.7077, 9.9062



47.4074, 10.1074, 15.8491



47.4085, -0.4269, 18.1980

Triad

The Triadic color harmony groups three colors that are evenly spaced from another and form a triangle on the color wheel.



47.4085, 10.1053, 15.8498



47.4085, -21.2902, 4.5234



47.4085, 6.1774, -18.9394

Complementary

The Complementary color scheme is a pair of colors which are on the opposite of each other on the color wheel.



47.4074, 10.1074, 15.8491



49.5660, -9.7927, -13.3605

Split Complementary

Split-complementary colors differ from the complementary color scheme. The scheme consists of three colors, the original color and two neighbors of the complement color.



47.4085, -4.6013, -21.2729



47.4074, 10.1074, 15.8491



47.4085, -19.8593, -6.1402

Square

The Square scheme is like the rectangle color scheme, but the four colors are evenly spaced on the color wheel.



47.4085, 10.1053, 15.8498



47.4085, -18.0672, 12.6558



47.4085, -13.9705, -16.1588



47.4085, 15.3031, -10.3463

Rectangle

The Rectangle color scheme consists of four colors that form a rectangle on the color wheel.



47.4074, 10.1074, 15.8491



47.4085, -7.4579, 17.8893



47.4085, -13.9705, -16.1588



47.4085, 2.6033, -20.5513

Sweetspot

The Sweet Spot groups the original color and five complimentary colors.



47.4085, 10.1053, 15.8498



76.7600, 0.4425, 10.3077



42.8757, 28.9915, -9.0080



35.8326, 0.6061, 5.2967



92.0917, -4.9138, 5.0035



39.3538, -2.0998, 2.1382

Same Dimension

The Same Dimension uses a secret algorithm to generate beautiful new colors.



47.4085, 10.1053, 15.8498



59.5089, 18.5152, 23.9341



56.9951, -6.6527, 23.7410



28.2002, -0.3821, 3.0959



29.4720, 29.5483, 18.6778



5.5384, 2.3483, 3.4539

Inverse Universe

The Inverse Universe completely reimagines the original color for something new.



49.5660, -9.7927, -13.3605



62.9503, -13.6175, -23.1168



39.6718, 6.8495, -30.0726



28.4374, -2.5317, -0.0730



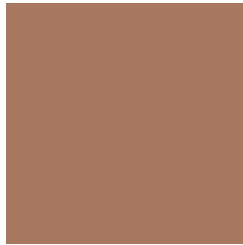
32.5564, -4.5061, -30.9652



5.8985, -1.9142, -3.2405

Previews

White Background



This preview shows how the HunterLab color 47.4074, 10.1074, 15.8491 looks on a white background.

Color Contrast Check

Large Text (above 18pt) WCAG AA ✓ Pass

Any Text WCAG AA × Fail

Large Text (above 18pt) WCAG AAA × Fail

Any Text WCAG AAA × Fail

Black Background



This preview shows how the HunterLab color 47.4074, 10.1074, 15.8491 looks on a black background.

Color Contrast Check

Large Text (above 18pt) WCAG AA ✓ Pass

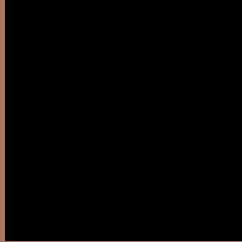
Any Text WCAG AA ✓ Pass

Large Text (above 18pt) WCAG AAA ✓ Pass

Any Text WCAG AAA × Fail

If you want to check with other color combinations, try the [Color Contrast Checker](#).

HunterLab 47.4074, 10.1074, 15.8491 Background



This preview shows how black text looks on a background with the HunterLab color 47.4074, 10.1074, 15.8491.



This preview shows how white text looks on a background with the HunterLab color 47.4074, 10.1074,

Color Blindness Simulation

Color vision deficiency is a very complex topic, and I could not describe the different causes any better than Wikipedia does, so if you want to learn more, you should check out their [article about color blindness](#).

Dichromacy



Original Color

47.4074, 10.1074, 15.8491

Protanopia

47.6740, -3.9341, 14.3134

Deuteranopia

47.3750, 3.2693, 15.9965



Tritanopia

47.4526, 16.7342, 5.2910

Trichromacy



Original Color

47.4074, 10.1074, 15.8491

Protanomaly

47.4812, 1.0116, 14.8463

Deuteranomaly

47.2705, 5.6436, 15.9443

Tritanomaly

47.2996, 14.4421, 9.4434

Monochromacy



Original Color

47.4074, 10.1074, 15.8491

Achromatopsia

47.6409, -2.5420, 2.5884

Achromatomaly

47.3456, 1.4495, 7.7360

CSS Examples

Text

The CSS property to change the color of the text to HunterLab 47.4074, 10.1074, 15.8491 is called "color". The color property can be set on classes, ids or directly on the HTML element.

This example shows how text in the color `rgb(167, 120, 95)` looks like.

```
.text, #text, p{  
    color:rgb(167, 120, 95)  
}
```

If you want to add a text shadow in that color use the text-shadow property, you can generate a text shadow directly with our [CSS Text Shadow Generator](#).

Here you see how black text with a 4 pixel rgb(167, 120, 95) colored shadow looks like.

```
.shadow{ text-shadow: 4px 4px 2px rgb(167, 120, 95) }
```

Border

The CSS property to change the border of an element to HunterLab 47.4074, 10.1074, 15.8491 is called "border". The border property can be set on classes, ids or directly on the HTML element.

This example shows the color as border, it can be applied via the CSS property "border" or "border-color".

```
.border, #border, table{ border:4px solid rgb(167, 120, 95) }
```


If only the border color should be changed use the property border-color.

```
.border{ border-color:rgb(167, 120, 95) }
```

If you want to add a box shadow in that color use:

Here you see how a box with a 4 pixel rgb(167, 120, 95) colored shadow looks like.

```
.boxshadow{ -moz-box-shadow:4px 4px 4px  
4px rgb(167, 120, 95); -webkit-box-  
shadow:4px 4px 4px 4px rgb(167, 120, 95);  
box-shadow:4px 4px 4px 4px rgb(167, 120,  
95) }
```

Background

The CSS property to change the background color of an element to HunterLab 47.4074, 10.1074, 15.8491 is called "background". The background property can be set on classes, ids or directly on the HTML element.

```
.background, #background, body{  
background: rgb(167, 120, 95) }
```

If only the background color should be changed can be used:

```
.background{ background-color: rgb(167,  
120, 95) }
```

This example shows the color as background, it is applied via the CSS property "background".

To optimize and compress your CSS code, you can use our [online CSS compressor and optimizer](#) based on csstidy. If you want to create a linear or radial gradient as background or border, check our [CSS Gradient Generator](#).

Hey! You found this booklet interesting? Support Converting Colors with the new Membership Option!

The pro membership hides all ads, plus gives you double the colors in the color bucket, and more awesome pro features!

[Learn more, Memberships starting at \\$2.50/m!](#)

**Follow me
on Twitter!**

@ConvertingColor