

Converting Colors

HunterLab(47.6517, 79.5854,
18.1685)

Have a look what the booklet for
HunterLab(47.6517, 79.5854,
18.1685) contains.

HunterLab(47.6739, 79.5157, 18.1762)	3
<i>Conversions</i>	4
<i>Details</i>	6
<i>Harmonies</i>	12
<i>Previews</i>	24
<i>Color Blindness Simulation</i>	28
<i>CSS Examples</i>	31

Color

**HunterLab(47.6739, 79.5157,
18.1762)**

Conversions

Conversions Part 1

Format	Color
Hex	FF195C
RGB	255, 25, 92
RGB Percent	100%, 10%, 36%
CMY	0.0000, 0.9018, 0.6392
CMYK	0.00, 0.90, 0.64, 0.00
HSL	343°, 100%, 55%
HSV	343°, 90%, 100%
XYZ	43.5195, 22.7280, 12.2184
YIQ	101.4080, 115.5730, 69.5970

Conversions

Conversions Part 2

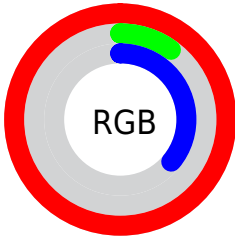
Format	Color
RYB	255, 25, 92
Decimal	16718172
CIELab	54.79, 80.24, 25.59
CIElCh	55, 84.219, 17.687
Yxy	22.7294, 0.5546, 0.2897
Android (android.graphics.Color)	4294908252 (0xFFFF195C)
YUV	101.4080, -4.6381, 134.7002
Hunter-Lab	47.6739, 79.5157, 18.1762

Details

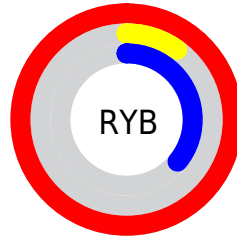
The HunterLab color **47.6739, 79.5157, 18.1762** is a dark color, and the websafe version is hex **FF3366**. The color can be described as dark washed red. A complement of this color would be **86.8097, -58.8883, 19.9528**, and the grayscale version is **36.2216, -1.9327, 1.9680**.

A 20% lighter version of the original color is **57.5444, 57.7225, 10.1017**, and **33.3952, 57.8048, 16.8153** is the 20% darker color. If you saturate the color by 10%, you get **46.6452, 80.9487, 21.8675**, and if you desaturate by 10%, it is **49.7138, 75.3730, 14.3340**.

Distribution



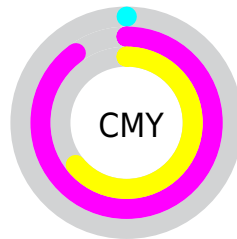
- Red (100%)
- Green (10%)
- Blue (36%)



- Red (100%)
- Yellow (10%)
- Blue (36%)



- Cyan (0%)
- Magenta (90%)
- Yellow (64%)
- Black (0%)



- Cyan (0%)
- Magenta (90%)
- Yellow (64%)

Brightness & Saturation Gradients

These gradients show how the HunterLab color 47.6739, 79.5157, 18.1762 changes by changing the brightness by 10 percent. The first figure shows a shift by +10% for each color and the second figure -10%.

Similar to the brightness gradients but the following saturation gradients show a change of the HunterLab color 47.6739, 79.5157, 18.1762 by changing the saturation by 10% instead.

47.6739, 79.5157,
18.1762

47.6739, 79.5157,
18.1762

163.1969, 99.0097,
35.4455

37.9392, 77.0569,
15.9799

69.2450, 84.3905,
22.3021

28.9743, 74.7282,
13.6489

80.9945, 86.7374,
24.2714

20.8537, 72.7875,
11.1312

93.3423, 89.0014,
26.1972

13.6767, 71.9187,
9.5737

106.2608, 91.1775,
28.0892

7.2840, 78.5755,
5.0988

119.7257, 93.2648,
29.9547

0.0000, INF, NaN

0.0000, INF, NaN

133.7157, 95.2644,

31.7997

0.0000, NaN, NaN

148.2118, 97.1784,
33.6287

0.0000, NaN, NaN

■ 47.6739, 79.5157,
18.1762

■ 47.6739, 79.5157,
18.1762

■ 46.6452, 80.9487,
21.8675

■ 49.7138, 75.3730,
14.3340

■ 52.9114, 68.4350,
10.8600

■ 57.2310, 59.3838,
8.0380

■ 62.5611, 49.0469,
5.9890

■ 68.7629, 38.1099,
4.7051

■ 75.7006, 27.0288,
4.1069

■ 83.2552, 16.0595,
4.0909

■ 91.3284, 5.3212,
4.5560

99.8411, -5.1476,
5.4144

Harmonies

Analogous

The Analogous color harmony consists of three colors that are next to each other on the color wheel.



47.6754, 82.1165, -13.0879



47.6739, 79.5157, 18.1762



47.6754, 51.4339, 29.7572

Triad

The Triadic color harmony groups three colors that are evenly spaced from another and form a triangle on the color wheel.



47.6754, 79.5101, 18.1773



47.6754, -42.6516, 28.6463



47.6754, -16.0042, -111.0393

Complementary

The Complementary color scheme is a pair of colors which are on the opposite of each other on the color wheel.



47.6739, 79.5157, 18.1762



86.8097, -58.8883, 19.9528

Split Complementary

Split-complementary colors differ from the complementary color scheme. The scheme consists of three colors, the original color and two neighbors of the complement color.



47.6754, -39.7734, -72.6446



47.6739, 79.5157, 18.1762



47.6754, -51.9211, 14.2800

Square

The Square scheme is like the rectangle color scheme, but the four colors are evenly spaced on the color wheel.



47.6754, 79.5101, 18.1773



47.6754, -21.2358, 32.1349



47.6754, -51.0461, -21.1028



47.6754, 19.5556, -106.7489

Rectangle

The Rectangle color scheme consists of four colors that form a rectangle on the color wheel.



47.6739, 79.5157, 18.1762



47.6754, 25.6383, 31.9168



47.6754, -51.0461, -21.1028



47.6754, -25.4022, -101.9735

Sweetspot

The Sweet Spot groups the original color and five complimentary colors.



47.6754, 79.5101, 18.1773



78.0429, 23.5184, 4.0437



42.8452, 86.0450, -103.0119



34.9446, 12.6236, 1.9032

0.0000, NaN, NaN



46.2646, -2.4686, 2.5136

Same Dimension

The Same Dimension uses a secret algorithm to generate beautiful new colors.



47.6754, 79.5101, 18.1773



46.6453, 80.9488, 21.8676



50.8334, 64.3901, 31.3755



42.5136, 2.1297, 2.1294



33.7510, 58.6367, 15.3206



10.6168, 18.6105, 3.5353

Inverse Universe

The Inverse Universe completely reimagines the original color for something new.



47.6754, 79.5101, 18.1773



46.6453, 80.9488, 21.8676



72.8226, -26.3198, -32.6143



42.5136, 2.1297, 2.1294



33.7510, 58.6367, 15.3206



10.6168, 18.6105, 3.5353

Previews

White Background



This preview shows how the HunterLab color 47.6739, 79.5157, 18.1762 looks on a white background.

Color Contrast Check

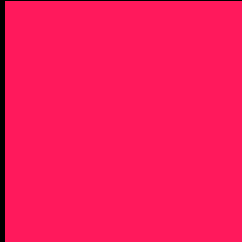
Large Text (above 18pt) WCAG AA ✓ Pass

Any Text WCAG AA × Fail

Large Text (above 18pt) WCAG AAA × Fail

Any Text WCAG AAA × Fail

Black Background



This preview shows how the HunterLab color 47.6739, 79.5157, 18.1762 looks on a black background.

Color Contrast Check

Large Text (above 18pt) WCAG AA ✓ Pass

Any Text WCAG AA ✓ Pass

Large Text (above 18pt) WCAG AAA ✓ Pass

Any Text WCAG AAA × Fail

If you want to check with other color combinations, try the [Color Contrast Checker](#).

HunterLab 47.6739, 79.5157, 18.1762 Background



This preview shows how black text looks on a background with the HunterLab color 47.6739, 79.5157, 18.1762.



This preview shows how white text looks on a background with the HunterLab color 47.6739, 79.5157,

Color Blindness Simulation

Color vision deficiency is a very complex topic, and I could not describe the different causes any better than Wikipedia does, so if you want to learn more, you should check out their [article about color blindness](#).

Dichromacy



Original Color

47.6739, 79.5157, 18.1762

Protanopia

47.9525, -1.3478, 2.0877

Deuteranopia

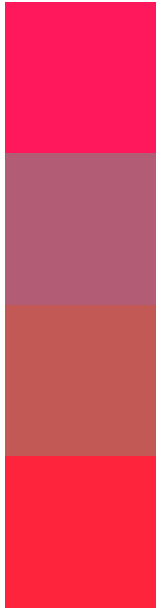
47.8401, 3.0080, 19.8838



Tritanopia

47.7184, 72.7494, 28.0709

Trichromacy



Original Color

47.6739, 79.5157, 18.1762

Protanomaly

42.9270, 30.7347, 3.3167

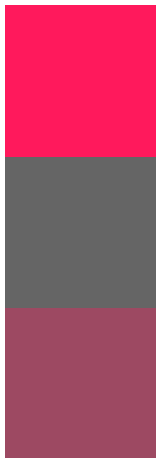
Deuteranomaly

43.8976, 34.8402, 16.0515

Tritanomaly

47.6013, 75.3917, 25.3268

Monochromacy



Original Color

47.6739, 79.5157, 18.1762

Achromatopsia

36.0744, -1.9248, 1.9600

Achromatomaly

35.7981, 29.5589, 3.4379

CSS Examples

Text

The CSS property to change the color of the text to HunterLab 47.6739, 79.5157, 18.1762 is called "color". The color property can be set on classes, ids or directly on the HTML element.

This example shows how text in the color `rgb(255, 25, 92)` looks like.

```
.text, #text, p{  
    color:rgb(255, 25, 92)  
}
```

If you want to add a text shadow in that color use the text-shadow property, you can generate a text shadow directly with our [CSS Text Shadow Generator](#).

Here you see how black text with a 4 pixel rgb(255, 25, 92) colored shadow looks like.

```
.shadow{ text-shadow: 4px 4px 2px rgb(255, 25, 92) }
```

Border

The CSS property to change the border of an element to HunterLab 47.6739, 79.5157, 18.1762 is called "border". The border property can be set on classes, ids or directly on the HTML element.

This example shows the color as border, it can be applied via the CSS property "border" or "border-color".

```
.border, #border, table{ border:4px solid rgb(255, 25, 92) }
```


If only the border color should be changed use the property `border-color`.

```
.border{ border-color:rgb(255, 25, 92) }
```

If you want to add a box shadow in that color use:

Here you see how a box with a 4 pixel `rgb(255, 25, 92)` colored shadow looks like.

```
.boxshadow{ -moz-box-shadow:4px 4px 4px  
4px rgb(255, 25, 92); -webkit-box-  
shadow:4px 4px 4px 4px rgb(255, 25, 92);  
box-shadow:4px 4px 4px 4px rgb(255, 25,  
92) }
```

Background

The CSS property to change the background color of an element to HunterLab 47.6739, 79.5157, 18.1762 is called "background". The background property can be set on classes, ids or directly on the HTML element.

```
.background, #background, body{  
background: rgb(255, 25, 92) }
```

If only the background color should be changed can be used:

```
.background{ background-color: rgb(255, 25,  
92) }
```

This example shows the color as background, it is applied via the CSS property "background".

To optimize and compress your CSS code, you can use our [online CSS compressor and optimizer](#) based on csstidy. If you want to create a linear or radial gradient as background or border, check our [CSS Gradient Generator](#).

Hey! You found this booklet interesting? Support Converting Colors with the new Membership Option!

The pro membership hides all ads, plus gives you double the colors in the color bucket, and more awesome pro features!

[Learn more, Memberships starting at \\$2.50/m!](#)

**Follow me
on Twitter!**

@ConvertingColor