

Converting Colors

HunterLab(47.7596, 16.8158,
21.8985)

Have a look what the booklet for
HunterLab(47.7596, 16.8158,
21.8985) contains.

HunterLab(47.7596, 16.8158, 21.8985)	3
<i>Conversions</i>	4
<i>Details</i>	6
<i>Harmonies</i>	12
<i>Previews</i>	24
<i>Color Blindness Simulation</i>	28
<i>CSS Examples</i>	31

Color

**HunterLab(47.7596, 16.8158,
21.8985)**

Conversions

Conversions Part 1

Format	Color
Hex	B77349
RGB	183, 115, 73
RGB Percent	72%, 45%, 29%
CMY	0.2824, 0.5490, 0.7137
CMYK	0.00, 0.37, 0.60, 0.28
HSL	23°, 43%, 50%
HSV	23°, 60%, 72%
XYZ	26.8618, 22.8098, 9.2903
YIQ	130.5440, 54.0100, 1.3540

Conversions

Conversions Part 2

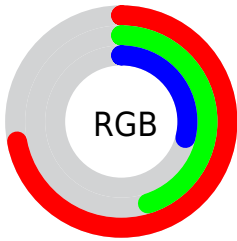
Format	Color
R_{YB}	183, 141, 73
Decimal	12022601
CIE _{Lab}	54.88, 22.62, 34.15
CIE _{LCh}	55, 40.964, 56.483
Yxy	22.8110, 0.4556, 0.3869
Android (android.graphics.Color)	4290212681 (0xFFB77349)
YUV	130.5440, -28.3692, 46.0039
Hunter-Lab	47.7596, 16.8158, 21.8985

Details

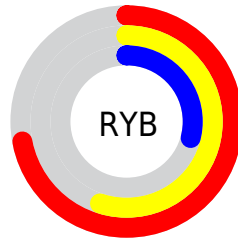
The HunterLab color **47.7596, 16.8158, 21.8985** is a dark color, and the websafe version is hex **996633**. A complement of this color would be **48.8712, -9.4832, -24.4022**, and the grayscale version is **47.5555, -2.5374, 2.5838**.

A 20% lighter version of the original color is **69.2421, 18.0639, 26.9374**, and **29.0020, 15.4113, 16.0209** is the 20% darker color. If you saturate the color by 10%, you get **44.9213, 21.2460, 23.3310**, and if you desaturate by 10%, it is **50.8239, 12.6680, 19.9134**.

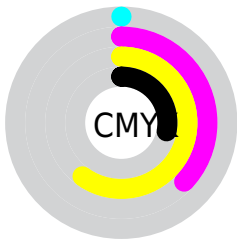
Distribution



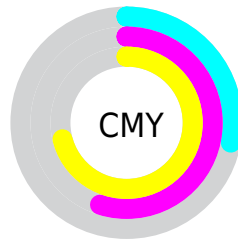
- Red (72%)
- Green (45%)
- Blue (29%)



- Red (72%)
- Yellow (55%)
- Blue (29%)



- Cyan (0%)
- Magenta (37%)
- Yellow (60%)
- Black (28%)



- Cyan (28%)
- Magenta (55%)
- Yellow (71%)

Brightness & Saturation Gradients

These gradients show how the HunterLab color 47.7596, 16.8158, 21.8985 changes by changing the brightness by 10 percent. The first figure shows a shift by +10% for each color and the second figure -10%.

Similar to the brightness gradients but the following saturation gradients show a change of the HunterLab color 47.7596, 16.8158, 21.8985 by changing the saturation by 10% instead.

47.7596, 16.8158,
21.8985

47.7596, 16.8158,
21.8985

163.3256, 19.2872,
43.2385

38.0184, 16.1293,
19.0775

69.3417, 17.8763,
27.1296

29.0467, 15.3248,
16.0626

81.0964, 18.2774,
29.5953

20.9186, 14.3812,
12.9113

93.4492, 18.6027,
31.9873

13.7331, 13.2796,
9.6131

106.3724, 18.8586,
34.3197

7.3479, 13.5165,
5.1436

119.8418, 19.0507,
36.6031

0.0000, INF, NaN

0.0000, NaN, NaN

133.8362, 19.1836,

38.8463

0.0000, NaN, NaN

148.3365, 19.2613,
41.0562

0.0000, NaN, NaN

■ 47.7596, 16.8158,
21.8985

■ 47.7596, 16.8158,
21.8985

■ 44.9213, 21.2460,
23.3310

■ 50.8239, 12.6680,
19.9134

■ 42.3292, 25.9214,
24.1537

■ 54.0880, 8.8282,
17.4371

■ 40.0080, 30.7556,
24.3366

■ 57.5321, 5.2927,
14.5327

■ 37.9902, 35.5281,
24.0314

■ 61.1378, 2.0487,
11.2568

■ 64.8887, -0.9227,
7.6591

■ 68.7707, -3.6435,
3.7822

■ 72.7714, -6.1363,
-0.3382

■ 76.8801, -8.4231,
-4.6723

■ 81.0876, -10.5246,
-9.1949

Harmonies

Analogous

The Analogous color harmony consists of three colors that are next to each other on the color wheel.



47.7608, 30.2654, 14.4627



47.7596, 16.8158, 21.8985



47.7608, -0.5348, 24.3482

Triad

The Triadic color harmony groups three colors that are evenly spaced from another and form a triangle on the color wheel.



47.7608, 16.8132, 21.8991



47.7608, -30.9248, 4.4631



47.7608, 12.8706, -34.3134

Complementary

The Complementary color scheme is a pair of colors which are on the opposite of each other on the color wheel.



47.7596, 16.8158, 21.8985



48.8712, -9.4832, -24.4022

Split Complementary

Split-complementary colors differ from the complementary color scheme. The scheme consists of three colors, the original color and two neighbors of the complement color.



47.7608, -4.5342, -39.8584



47.7596, 16.8158, 21.8985



47.7608, -28.3644, -13.3970

Square

The Square scheme is like the rectangle color scheme, but the four colors are evenly spaced on the color wheel.



47.7608, 16.8132, 21.8991



47.7608, -26.8015, 16.7476



47.7608, -19.2498, -31.1491



47.7608, 27.7754, -17.8866

Rectangle

The Rectangle color scheme consists of four colors that form a rectangle on the color wheel.



47.7596, 16.8158, 21.8985



47.7608, -11.4517, 23.7992



47.7608, -19.2498, -31.1491



47.7608, 7.0535, -37.7141

Sweetspot

The Sweet Spot groups the original color and five complimentary colors.



47.7608, 16.8132, 21.8991



82.7147, 1.9953, 14.2229



40.9946, 45.1431, -11.3420



38.1992, 1.5036, 7.3162



96.5975, -5.1542, 5.2483



43.2801, -2.3093, 2.3515

Same Dimension

The Same Dimension uses a secret algorithm to generate beautiful new colors.



47.7608, 16.8132, 21.8991



59.0116, 30.3305, 31.6524



62.1906, -8.9641, 32.1551



30.9182, -0.5410, 3.4960



31.9251, 29.1616, 20.1826



6.9307, 3.2377, 4.3274

Inverse Universe

The Inverse Universe completely reimagines the original color for something new.



48.8712, -9.4832, -24.4022



60.6472, -10.9931, -41.2620



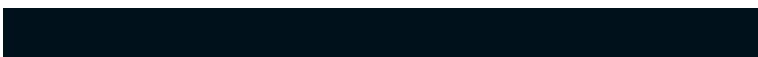
34.2935, 16.8001, -56.0283



31.0143, -2.6443, -0.2043



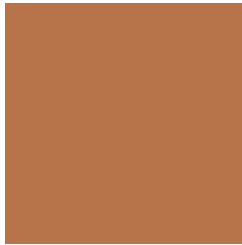
32.8307, -2.2171, -36.2495



7.0397, -1.7726, -4.9725

Previews

White Background



This preview shows how the HunterLab color 47.7596, 16.8158, 21.8985 looks on a white background.

Color Contrast Check

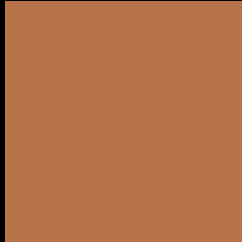
Large Text (above 18pt) WCAG AA ✓ Pass

Any Text WCAG AA × Fail

Large Text (above 18pt) WCAG AAA × Fail

Any Text WCAG AAA × Fail

Black Background



This preview shows how the HunterLab color 47.7596, 16.8158, 21.8985 looks on a black background.

Color Contrast Check

Large Text (above 18pt) WCAG AA ✓ Pass

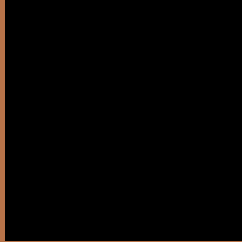
Any Text WCAG AA ✓ Pass

Large Text (above 18pt) WCAG AAA ✓ Pass

Any Text WCAG AAA × Fail

If you want to check with other color combinations, try the [Color Contrast Checker](#).

HunterLab 47.7596, 16.8158, 21.8985 Background



This preview shows how black text looks on a background with the HunterLab color 47.7596, 16.8158, 21.8985.



This preview shows how white text looks on a background with the HunterLab color 47.7596, 16.8158,

Color Blindness Simulation

Color vision deficiency is a very complex topic, and I could not describe the different causes any better than Wikipedia does, so if you want to learn more, you should check out their [article about color blindness](#).

Dichromacy



Original Color

47.7596, 16.8158, 21.8985

Protanopia

47.9545, -5.1415, 20.3136

Deuteranopia

47.9100, 2.9526, 22.1964



Tritanopia

47.8529, 24.7896, 8.6847

Trichromacy



Original Color

47.7596, 16.8158, 21.8985

Protanomaly

47.6725, 2.3213, 20.6840

Deuteranomaly

47.7723, 7.9099, 21.9666

Tritanomaly

47.8142, 21.6017, 14.2537

Monochromacy



Original Color

47.7596, 16.8158, 21.8985

Achromatopsia

47.6409, -2.5420, 2.5884

Achromatomaly

47.1986, 3.3489, 10.6112

CSS Examples

Text

The CSS property to change the color of the text to HunterLab 47.7596, 16.8158, 21.8985 is called "color". The color property can be set on classes, ids or directly on the HTML element.

This example shows how text in the color `rgb(183, 115, 73)` looks like.

```
.text, #text, p{  
    color:rgb(183, 115, 73)  
}
```

If you want to add a text shadow in that color use the text-shadow property, you can generate a text shadow directly with our [CSS Text Shadow Generator](#).

Here you see how black text with a 4 pixel rgb(183, 115, 73) colored shadow looks like.

```
.shadow{ text-shadow: 4px 4px 2px rgb(183, 115, 73) }
```

Border

The CSS property to change the border of an element to HunterLab 47.7596, 16.8158, 21.8985 is called "border". The border property can be set on classes, ids or directly on the HTML element.

This example shows the color as border, it can be applied via the CSS property "border" or "border-color".

```
.border, #border, table{ border:4px solid rgb(183, 115, 73) }
```


If only the border color should be changed use the property `border-color`.

```
.border{ border-color:rgb(183, 115, 73) }
```

If you want to add a box shadow in that color use:

Here you see how a box with a 4 pixel `rgb(183, 115, 73)` colored shadow looks like.

```
.boxshadow{ -moz-box-shadow:4px 4px 4px  
4px rgb(183, 115, 73); -webkit-box-  
shadow:4px 4px 4px 4px rgb(183, 115, 73);  
box-shadow:4px 4px 4px 4px rgb(183, 115,  
73) }
```

Background

The CSS property to change the background color of an element to HunterLab 47.7596, 16.8158, 21.8985 is called "background". The background property can be set on classes, ids or directly on the HTML element.

```
.background, #background, body{  
background: rgb(183, 115, 73) }
```

If only the background color should be changed can be used:

```
.background{ background-color: rgb(183,  
115, 73) }
```

This example shows the color as background, it is applied via the CSS property "background".

To optimize and compress your CSS code, you can use our [online CSS compressor and optimizer](#) based on csstidy. If you want to create a linear or radial gradient as background or border, check our [CSS Gradient Generator](#).

Hey! You found this booklet interesting? Support Converting Colors with the new Membership Option!

The pro membership hides all ads, plus gives you double the colors in the color bucket, and more awesome pro features!

[Learn more, Memberships starting at \\$2.50/m!](#)

**Follow me
on Twitter!**

@ConvertingColor