

Converting Colors

HunterLab(47.7711, 71.7728,
2.2441)

Have a look what the booklet for
HunterLab(47.7711, 71.7728,
2.2441) contains.

HunterLab(47.7711, 71.7728, 2.2441)	3
<i>Conversions</i>	4
<i>Details</i>	6
<i>Harmonies</i>	12
<i>Previews</i>	24
<i>Color Blindness Simulation</i>	28
<i>CSS Examples</i>	31

Color

**HunterLab(47.7711, 71.7728,
2.2441)**

Conversions

Conversions Part 1

Format	Color
Hex	F03587
RGB	240, 53, 135
RGB Percent	94%, 21%, 53%
CMY	0.0588, 0.7921, 0.4706
CMYK	0.00, 0.78, 0.44, 0.06
HSL	334°, 86%, 57%
HSV	334°, 78%, 94%
XYZ	41.5815, 22.8208, 25.1350
YIQ	118.2610, 85.1300, 65.1460

Conversions

Conversions Part 2

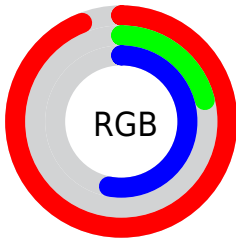
Format	Color
R_{YB}	240, 53, 135
Decimal	15742343
CIE _{Lab}	54.89, 74.02, -0.47
CIE _{LCh}	55, 74.018, 359.638
Yxy	22.8221, 0.4644, 0.2549
Android (android.graphics.Color)	4293932423 (0xFFFF03587)
YUV	118.2610, 8.2523, 106.7651
Hunter-Lab	47.7711, 71.7728, 2.2441

Details

The HunterLab color **47.7711, 71.7728, 2.2441** is a dark color, and the websafe version is hex **FF3399**. The color can be described as middle washed rose. A complement of this color would be **80.9608, -56.1324, 25.2111**, and the grayscale version is **42.6132, -2.2737, 2.3153**.

A 20% lighter version of the original color is **61.5205, 57.1298, -6.9432**, and **31.8384, 56.6345, 4.2151** is the 20% darker color. If you saturate the color by 10%, you get **45.6049, 76.1989, 5.6987**, and if you desaturate by 10%, it is **50.9787, 64.7577, -0.2690**.

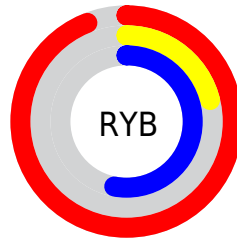
Distribution



Red (94%)

Green (21%)

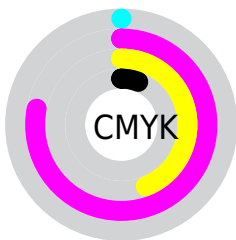
Blue (53%)



Red (94%)

Yellow (21%)

Blue (53%)

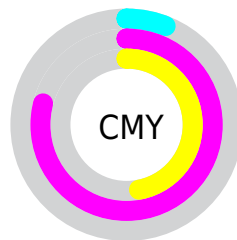


Cyan (0%)

Magenta (78%)

Yellow (44%)

Black (6%)



Cyan (6%)

Magenta (79%)

Yellow (47%)

Brightness & Saturation Gradients

These gradients show how the HunterLab color 47.7711, 71.7728, 2.2441 changes by changing the brightness by 10 percent. The first figure shows a shift by +10% for each color and the second figure -10%.

Similar to the brightness gradients but the following saturation gradients show a change of the HunterLab color 47.7711, 71.7728, 2.2441 by changing the saturation by 10% instead.

47.7711, 71.7728,
2.2441

47.7711, 71.7728,
2.2441

163.3431, 89.8174,
8.3577

38.0292, 69.3988,
1.7409

69.3549, 76.3831,
3.3736

29.0565, 67.0862,
1.2805

81.1103, 78.5727,
3.9921

20.9274, 65.0316,
0.8688

93.4638, 80.6713,
4.6442

13.7407, 63.7660,
0.5125

106.3876, 82.6775,
5.3282

7.3566, 68.5862,
0.1373

119.8576, 84.5923,
6.0428

0.0000, INF, NaN

0.0000, INF, NaN

133.8526, 86.4184,

6.7866

0.0000, NaN, NaN

148.3534, 88.1590,
7.5585

0.0000, NaN, NaN

■ 47.7711, 71.7728,
2.2441

■ 47.7711, 71.7728,
2.2441

■ 45.6049, 76.1989,
5.6987

■ 50.9787, 64.7577,
-0.2690

■ 44.4048, 77.8549,
9.7644


■ 55.1747, 55.8465,
-1.7330

■ 44.2153, 78.0375,
10.6068


■ 60.2564, 45.7817,
-2.1947


■ 66.1021, 35.1646,
-1.7884

■ 72.5951, 24.3935,
-0.6717

 79.6336, 13.6954,
1.0099

 87.1332, 3.1803,
3.1367

 95.0257, -7.1125,
5.6147

 98.6232, -10.1589,
3.7172

Harmonies

Analogous

The Analogous color harmony consists of three colors that are next to each other on the color wheel.



47.7725, 59.6347, -35.2747



47.7711, 71.7728, 2.2441



47.7725, 60.1787, 22.8392

Triad

The Triadic color harmony groups three colors that are evenly spaced from another and form a triangle on the color wheel.



47.7725, 71.7683, 2.2455



47.7725, -28.3297, 30.1640



47.7725, -28.8269, -75.4101

Complementary

The Complementary color scheme is a pair of colors which are on the opposite of each other on the color wheel.



47.7711, 71.7728, 2.2441



80.9608, -56.1324, 25.2111

Split Complementary

Split-complementary colors differ from the complementary color scheme. The scheme consists of three colors, the original color and two neighbors of the complement color.



47.7725, -43.7239, -34.2353



47.7711, 71.7728, 2.2441



47.7725, -43.4918, 23.1369

Square

The Square scheme is like the rectangle color scheme, but the four colors are evenly spaced on the color wheel.



47.7725, 71.7683, 2.2455



47.7725, -2.1793, 31.5486



47.7725, -48.3359, 2.9526



47.7725, -2.9227, -94.2105

Rectangle

The Rectangle color scheme consists of four colors that form a rectangle on the color wheel.



47.7711, 71.7728, 2.2441



47.7725, 41.8904, 28.6236



47.7725, -48.3359, 2.9526



47.7725, -35.0254, -62.8257

Sweetspot

The Sweet Spot groups the original color and five complimentary colors.



47.7725, 71.7683, 2.2455



81.3483, 20.5708, 0.0846



39.8653, 67.6280, -96.8580



36.3886, 11.4442, -0.2456

0.0000, NaN, NaN



46.2646, -2.4686, 2.5136

Same Dimension

The Same Dimension uses a secret algorithm to generate beautiful new colors.



47.7725, 71.7683, 2.2455



48.0507, 82.9159, 8.4087



47.1883, 62.3763, 25.9351



39.8422, 2.2309, 1.2883



32.7531, 57.8817, 7.2806



9.5504, 17.0722, 0.6144

Inverse Universe

The Inverse Universe completely reimagines the original color for something new.



47.7725, 71.7683, 2.2455



48.0507, 82.9159, 8.4087



80.0031, -38.0963, -12.4639



39.8422, 2.2309, 1.2883



32.7531, 57.8817, 7.2806



9.5504, 17.0722, 0.6144

Previews

White Background



This preview shows how the HunterLab color 47.7711, 71.7728, 2.2441 looks on a white background.

Color Contrast Check

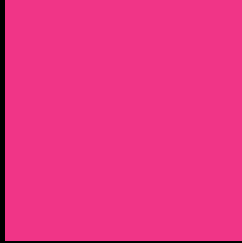
Large Text (above 18pt) WCAG AA ✓ Pass

Any Text WCAG AA × Fail

Large Text (above 18pt) WCAG AAA × Fail

Any Text WCAG AAA × Fail

Black Background



This preview shows how the HunterLab color 47.7711, 71.7728, 2.2441 looks on a black background.

Color Contrast Check

Large Text (above 18pt) WCAG AA ✓ Pass

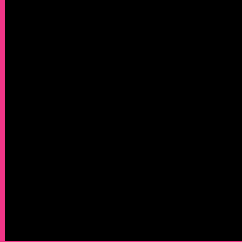
Any Text WCAG AA ✓ Pass

Large Text (above 18pt) WCAG AAA ✓ Pass

Any Text WCAG AAA × Fail

If you want to check with other color combinations, try the [Color Contrast Checker](#).

HunterLab 47.7711, 71.7728, 2.2441 Background



This preview shows how black text looks on a background with the HunterLab color 47.7711, 71.7728, 2.2441.



This preview shows how white text looks on a background with the HunterLab color 47.7711, 71.7728,

Color Blindness Simulation

Color vision deficiency is a very complex topic, and I could not describe the different causes any better than Wikipedia does, so if you want to learn more, you should check out their [article about color blindness](#).

Dichromacy



Original Color

47.7711, 71.7728, 2.2441

Protanopia

48.0452, 3.8211, -24.2756

Deuteranopia

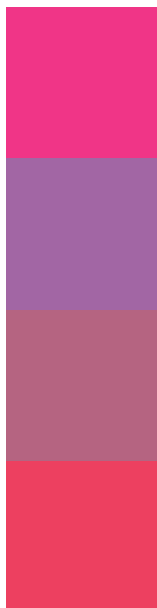
47.8416, 3.5390, 5.0796



Tritanopia

47.6525, 59.0196, 22.3357

Trichromacy



Original Color

47.7711, 71.7728, 2.2441

Protanomaly

44.5696, 27.5444, -18.7763

Deuteranomaly

45.3024, 29.3741, 1.2479

Tritanomaly

47.4509, 63.1807, 16.5177

Monochromacy



Original Color

47.7711, 71.7728, 2.2441

Achromatopsia

42.5634, -2.2711, 2.3126

Achromatomaly

41.4029, 24.7260, -1.3618

CSS Examples

Text

The CSS property to change the color of the text to HunterLab 47.7711, 71.7728, 2.2441 is called "color". The color property can be set on classes, ids or directly on the HTML element.

This example shows how text in the color `rgb(240, 53, 135)` looks like.

```
.text, #text, p{  
    color:rgb(240, 53, 135)  
}
```

If you want to add a text shadow in that color use the text-shadow property, you can generate a text shadow directly with our [CSS Text Shadow Generator](#).

Here you see how black text with a 4 pixel rgb(240, 53, 135) colored shadow looks like.

```
.shadow{ text-shadow: 4px 4px 2px rgb(240, 53, 135) }
```

Border

The CSS property to change the border of an element to HunterLab 47.7711, 71.7728, 2.2441 is called "border". The border property can be set on classes, ids or directly on the HTML element.

This example shows the color as border, it can be applied via the CSS property "border" or "border-color".

```
.border, #border, table{ border:4px solid rgb(240, 53, 135) }
```


If only the border color should be changed use the property `border-color`.

```
.border{ border-color:rgb(240, 53, 135) }
```

If you want to add a box shadow in that color use:

Here you see how a box with a 4 pixel `rgb(240, 53, 135)` colored shadow looks like.

```
.boxshadow{ -moz-box-shadow:4px 4px 4px  
4px rgb(240, 53, 135); -webkit-box-  
shadow:4px 4px 4px 4px rgb(240, 53, 135);  
box-shadow:4px 4px 4px 4px rgb(240, 53,  
135) }
```

Background

The CSS property to change the background color of an element to HunterLab 47.7711, 71.7728, 2.2441 is called "background". The background property can be set on classes, ids or directly on the HTML element.

```
.background, #background, body{  
background: rgb(240, 53, 135) }
```

If only the background color should be changed can be used:

```
.background{ background-color: rgb(240, 53,  
135) }
```

This example shows the color as background, it is applied via the CSS property "background".

To optimize and compress your CSS code, you can use our [online CSS compressor and optimizer](#) based on csstidy. If you want to create a linear or radial gradient as background or border, check our [CSS Gradient Generator](#).

Hey! You found this booklet interesting? Support Converting Colors with the new Membership Option!

The pro membership hides all ads, plus gives you double the colors in the color bucket, and more awesome pro features!

[Learn more, Memberships starting at \\$2.50/m!](#)

**Follow me
on Twitter!**

@ConvertingColor