

Converting Colors

HunterLab(47.7978, 55.1954,
12.4410)

Have a look what the booklet for
HunterLab(47.7978, 55.1954,
12.4410) contains.

HunterLab(47.8370, 54.9570, 12.5072)	3
<i>Conversions</i>	4
<i>Details</i>	6
<i>Harmonies</i>	12
<i>Previews</i>	24
<i>Color Blindness Simulation</i>	28
<i>CSS Examples</i>	31

Color

**HunterLab(47.8370, 54.9570,
12.5072)**

Conversions

Conversions Part 1

Format	Color
Hex	E34E6D
RGB	227, 78, 109
RGB Percent	89%, 31%, 43%
CMY	0.1098, 0.6941, 0.5725
CMYK	0.00, 0.66, 0.52, 0.11
HSL	348°, 73%, 60%
HSV	348°, 66%, 89%
XYZ	37.1633, 22.8838, 16.9263
YIQ	126.0850, 78.8530, 41.2290

Conversions

Conversions Part 2

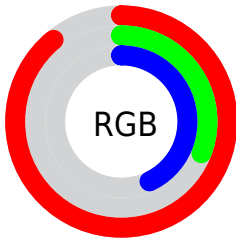
Format	Color
R_{YB}	227, 78, 109
Decimal	14896749
CIE _{Lab}	54.95, 59.79, 14.79
CIE _{LCh}	55, 61.589, 13.899
Yxy	22.8851, 0.4828, 0.2973
Android (android.graphics.Color)	4293086829 (0xFFE34E6D)
YUV	126.0850, -8.4229, 88.5025
Hunter-Lab	47.8370, 54.9570, 12.5072

Details

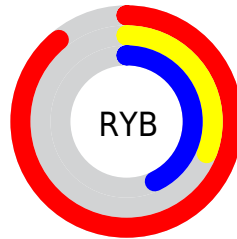
The HunterLab color **47.8370, 54.9570, 12.5072** is a dark color, and the websafe version is hex **CC3366**. The color can be described as middle muted rose. A complement of this color would be **77.8100, -43.0833, 7.3938**, and the grayscale version is **45.7220, -2.4396, 2.4842**.

A 20% lighter version of the original color is **64.1296, 44.3387, 9.5447**, and **29.1517, 50.7334, 9.5822** is the 20% darker color. If you saturate the color by 10%, you get **44.5515, 62.0599, 15.3604**, and if you desaturate by 10%, it is **52.0707, 46.4546, 10.0448**.

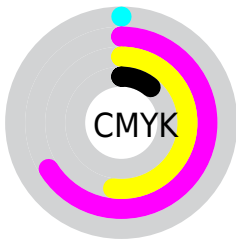
Distribution



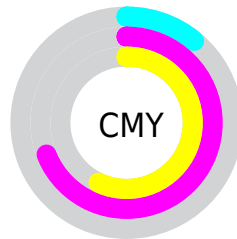
- Red (89%)
- Green (31%)
- Blue (43%)



- Red (89%)
- Yellow (31%)
- Blue (43%)



- Cyan (0%)
- Magenta (66%)
- Yellow (52%)
- Black (11%)



- Cyan (11%)
- Magenta (69%)
- Yellow (57%)

Brightness & Saturation Gradients

These gradients show how the HunterLab color 47.8370, 54.9570, 12.5072 changes by changing the brightness by 10 percent. The first figure shows a shift by +10% for each color and the second figure -10%.

Similar to the brightness gradients but the following saturation gradients show a change of the HunterLab color 47.8370, 54.9570, 12.5072 by changing the saturation by 10% instead.

■ 47.8370, 54.9570,
12.5072

■ 47.8370, 54.9570,
12.5072

163.4424, 69.3133,
24.8887

■ 38.0902, 52.8816,
11.0651

■ 69.4295, 58.8171,
15.3060

■ 29.1123, 50.7561,
9.5705

■ 81.1889, 60.5961,
16.6807

■ 20.9775, 48.6703,
7.9954

■ 93.5462, 62.2746,
18.0478

■ 13.7842, 46.8927,
6.3448

■ 106.4736, 63.8567,
19.4116

■ 7.4055, 49.0252,
5.1838

■ 119.9471, 65.3469,
20.7754

0.0000, INF, NaN

0.0000, NaN, NaN

133.9455, 66.7500,

22.1416

0.0000, NaN, NaN

148.4495, 68.0707,
23.5122

0.0000, NaN, NaN

■ 47.8370, 54.9570,
12.5072

■ 47.8370, 54.9570,
12.5072

■ 44.5515, 62.0599,
15.3604

■ 52.0707, 46.4546,
10.0448

■ 42.2831, 67.0699,
18.3794

■ 57.1327, 37.2364,
8.0754

■ 41.0151, 69.5658,
21.2543

■ 62.9001, 27.7843,
6.6124

■ 40.6667, 70.1520,
22.3322

■ 69.2592, 18.3879,
5.6156

■ 76.1140, 9.1913,
5.0238

■ 83.3863, 0.2482,
4.7740

■ 91.0142, -8.4371,
4.8088

■ 97.4328, -14.5277,
3.3228

■ 97.5043, -14.1297,
2.3056

Harmonies

Analogous

The Analogous color harmony consists of three colors that are next to each other on the color wheel.



47.8383, 54.2574, -12.2215



47.8370, 54.9570, 12.5072



47.8383, 38.1508, 24.9699

Triad

The Triadic color harmony groups three colors that are evenly spaced from another and form a triangle on the color wheel.



47.8383, 54.9530, 12.5082



47.8383, -32.0278, 25.4955



47.8383, -15.4078, -67.3821

Complementary

The Complementary color scheme is a pair of colors which are on the opposite of each other on the color wheel.



47.8370, 54.9570, 12.5072



77.8100, -43.0833, 7.3938

Split Complementary

Split-complementary colors differ from the complementary color scheme. The scheme consists of three colors, the original color and two neighbors of the complement color.



47.8383, -33.0075, -42.3428



47.8370, 54.9570, 12.5072



47.8383, -41.1379, 13.8174

Square

The Square scheme is like the rectangle color scheme, but the four colors are evenly spaced on the color wheel.



47.8383, 54.9530, 12.5082



47.8383, -13.7732, 29.3590



47.8383, -41.4542, -10.0105



47.8383, 9.8026, -68.4064

Rectangle

The Rectangle color scheme consists of four colors that form a rectangle on the color wheel.



47.8370, 54.9570, 12.5072



47.8383, 20.9845, 28.4076



47.8383, -41.4542, -10.0105



47.8383, -22.2723, -61.0748

Sweetspot

The Sweet Spot groups the original color and five complimentary colors.



47.8383, 54.9530, 12.5082



83.2658, 15.1688, 5.9830



47.4982, 63.5286, -60.3342



37.5047, 8.3946, 2.8611

0.0000, NaN, NaN



46.2646, -2.4686, 2.5136

Same Dimension

The Same Dimension uses a secret algorithm to generate beautiful new colors.



47.8383, 54.9530, 12.5082



49.6902, 73.3452, 18.8555



55.1069, 32.4725, 26.7684



37.9695, 1.7154, 2.2779



31.0783, 53.6550, 16.7302



8.5269, 14.8753, 3.3949

Inverse Universe

The Inverse Universe completely reimagines the original color for something new.



47.8383, 54.9530, 12.5082



49.6902, 73.3452, 18.8555



64.6332, -18.3475, -27.1596



37.9695, 1.7154, 2.2779



31.0783, 53.6550, 16.7302



8.5269, 14.8753, 3.3949

Previews

White Background



This preview shows how the HunterLab color 47.8370, 54.9570, 12.5072 looks on a white background.

Color Contrast Check

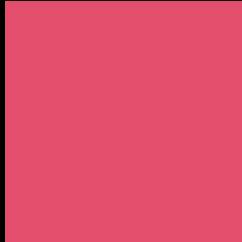
Large Text (above 18pt) WCAG AA ✓ Pass

Any Text WCAG AA × Fail

Large Text (above 18pt) WCAG AAA × Fail

Any Text WCAG AAA × Fail

Black Background



This preview shows how the HunterLab color 47.8370, 54.9570, 12.5072 looks on a black background.

Color Contrast Check

Large Text (above 18pt) WCAG AA ✓ Pass

Any Text WCAG AA ✓ Pass

Large Text (above 18pt) WCAG AAA ✓ Pass

Any Text WCAG AAA × Fail

If you want to check with other color combinations, try the [Color Contrast Checker](#).

HunterLab 47.8370, 54.9570, 12.5072 Background



This preview shows how black text looks on a background with the HunterLab color 47.8370, 54.9570, 12.5072.



This preview shows how white text looks on a background with the HunterLab color 47.8370, 54.9570,

Color Blindness Simulation

Color vision deficiency is a very complex topic, and I could not describe the different causes any better than Wikipedia does, so if you want to learn more, you should check out their [article about color blindness](#).

Dichromacy



Original Color

47.8370, 54.9570, 12.5072

Protanopia

47.9549, -1.1640, 0.7310

Deuteranopia

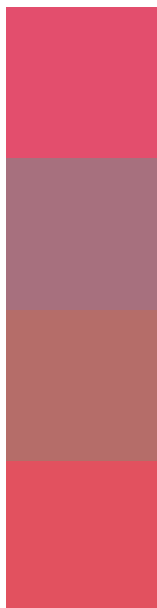
48.0693, 3.1626, 14.1708



Tritanopia

47.8450, 50.9590, 19.2003

Trichromacy



Original Color

47.8370, 54.9570, 12.5072

Protanomaly

46.1630, 17.8027, 3.4055

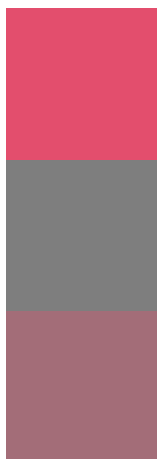
Deuteranomaly

46.6701, 21.8798, 12.1624

Tritanomaly

47.8329, 52.0235, 16.9655

Monochromacy



Original Color

47.8370, 54.9570, 12.5072

Achromatopsia

45.6768, -2.4372, 2.4817

Achromatomaly

44.8106, 17.0368, 4.3993

CSS Examples

Text

The CSS property to change the color of the text to HunterLab 47.8370, 54.9570, 12.5072 is called "color". The color property can be set on classes, ids or directly on the HTML element.

This example shows how text in the color `rgb(227, 78, 109)` looks like.

```
.text, #text, p{  
    color:rgb(227, 78, 109)  
}
```

If you want to add a text shadow in that color use the text-shadow property, you can generate a text shadow directly with our [CSS Text Shadow Generator](#).

Here you see how black text with a 4 pixel rgb(227, 78, 109) colored shadow looks like.

```
.shadow{ text-shadow: 4px 4px 2px rgb(227, 78, 109) }
```

Border

The CSS property to change the border of an element to HunterLab 47.8370, 54.9570, 12.5072 is called "border". The border property can be set on classes, ids or directly on the HTML element.

This example shows the color as border, it can be applied via the CSS property "border" or "border-color".

```
.border, #border, table{ border:4px solid rgb(227, 78, 109) }
```


If only the border color should be changed use the property `border-color`.

```
.border{ border-color:rgb(227, 78, 109) }
```

If you want to add a box shadow in that color use:

Here you see how a box with a 4 pixel `rgb(227, 78, 109)` colored shadow looks like.

```
.boxshadow{ -moz-box-shadow:4px 4px 4px  
4px rgb(227, 78, 109); -webkit-box-  
shadow:4px 4px 4px 4px rgb(227, 78, 109);  
box-shadow:4px 4px 4px 4px rgb(227, 78,  
109) }
```

Background

The CSS property to change the background color of an element to HunterLab 47.8370, 54.9570, 12.5072 is called "background". The background property can be set on classes, ids or directly on the HTML element.

```
.background, #background, body{  
background: rgb(227, 78, 109) }
```

If only the background color should be changed can be used:

```
.background{ background-color: rgb(227, 78,  
109) }
```

This example shows the color as background, it is applied via the CSS property "background".

To optimize and compress your CSS code, you can use our [online CSS compressor and optimizer](#) based on csstidy. If you want to create a linear or radial gradient as background or border, check our [CSS Gradient Generator](#).

Hey! You found this booklet interesting? Support Converting Colors with the new Membership Option!

The pro membership hides all ads, plus gives you double the colors in the color bucket, and more awesome pro features!

[Learn more, Memberships starting at \\$2.50/m!](#)

**Follow me
on Twitter!**

@ConvertingColor