

Converting Colors

HunterLab(47.8255, 8.6481,
17.6296)

Have a look what the booklet for
HunterLab(47.8255, 8.6481,
17.6296) contains.

HunterLab(47.8255, 8.6481, 17.6296)	3
<i>Conversions</i>	4
<i>Details</i>	6
<i>Harmonies</i>	12
<i>Previews</i>	24
<i>Color Blindness Simulation</i>	28
<i>CSS Examples</i>	31

Color

**HunterLab(47.8255, 8.6481,
17.6296)**

Conversions

Conversions Part 1

Format	Color
Hex	A77A5A
RGB	167, 122, 90
RGB Percent	65%, 48%, 35%
CMY	0.3451, 0.5216, 0.6471
CMYK	0.00, 0.27, 0.46, 0.35
HSL	25°, 30%, 50%
HSV	25°, 46%, 65%
XYZ	24.7414, 22.8728, 12.7838
YIQ	131.8070, 37.0920, -0.4120

Conversions

Conversions Part 2

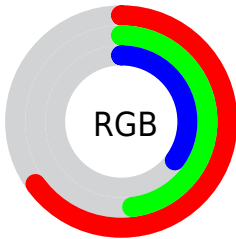
Format	Color
R_{YB}	167, 145, 90
Decimal	10975834
CIE _{Lab}	54.94, 13.47, 24.38
CIE _{LCh}	55, 27.852, 61.083
Yxy	22.8739, 0.4096, 0.3787
Android (android.graphics.Color)	4289165914 (0xFFA77A5A)
YUV	131.8070, -20.6109, 30.8643
Hunter-Lab	47.8255, 8.6481, 17.6296

Details

The HunterLab color $47.8255, 8.6481, 17.6296$ is a dark color, and the websafe version is hex 996633 . A complement of this color would be $47.2131, -7.5560, -16.9506$, and the grayscale version is $48.0286, -2.5627, 2.6095$.

A 20% lighter version of the original color is $69.2913, 9.1160, 21.6268$, and $29.0820, 8.3192, 13.2079$ is the 20% darker color. If you saturate the color by 10%, you get $45.1034, 11.9756, 19.6472$, and if you desaturate by 10%, it is $50.7042, 5.5926, 15.1725$.

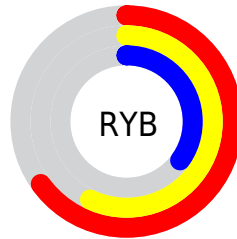
Distribution



Red (65%)

Green (48%)

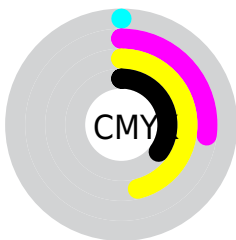
Blue (35%)



Red (65%)

Yellow (57%)

Blue (35%)

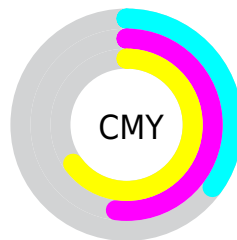


Cyan (0%)

Magenta (27%)

Yellow (46%)

Black (35%)



Cyan (35%)

Magenta (52%)

Yellow (65%)

Brightness & Saturation Gradients

These gradients show how the HunterLab color 47.8255, 8.6481, 17.6296 changes by changing the brightness by 10 percent. The first figure shows a shift by +10% for each color and the second figure -10%.

Similar to the brightness gradients but the following saturation gradients show a change of the HunterLab color 47.8255, 8.6481, 17.6296 by changing the saturation by 10% instead.

■ 47.8255, 8.6481,
17.6296

■ 47.8255, 8.6481,
17.6296

163.4248, 7.7353,
34.3320

■ 38.0794, 8.4213,
15.5212

■ 69.4163, 8.8531,
21.6002

■ 29.1025, 8.0994,
13.2882

■ 81.1750, 8.8532,
23.5003

■ 20.9686, 7.6622,
10.8806

■ 93.5316, 8.7929,
25.3613

■ 13.7765, 7.0839,
9.2276

■ 106.4584, 8.6773,
27.1921

■ 7.3968, 7.5392,
5.1778

■ 119.9313, 8.5105,
28.9997

0.0000, NaN, NaN

133.9290, 8.2960,

0.0000, NaN, NaN

30.7895

0.0000, NaN, NaN

148.4325, 8.0367,
32.5657

0.0000, NaN, NaN

■ 47.8255, 8.6481,
17.6296

■ 47.8255, 8.6481,
17.6296

■ 45.1034, 11.9756,
19.6472

■ 50.7042, 5.5926,
15.1725

■ 42.5507, 15.5788,
21.1710

■ 53.7213, 2.8071,
12.3249

■ 40.1859, 19.4366,
22.1537

■ 56.8646, 0.2750,
9.1344

■ 38.0262, 23.5059,
22.5626

■ 60.1222, -2.0218,
5.6425

■ 36.0867, 27.7059,
22.4147

■ 63.4839, -4.1024,
1.8853

■ 35.3871, 29.3215,
22.3187

■ 66.9405, -5.9861,
-2.1063

■ 70.4840, -7.6911,
-6.3058

■ 74.1076, -9.2344,
-10.6909

■ 77.8051, -10.6317,
-15.2425

Harmonies

Analogous

The Analogous color harmony consists of three colors that are next to each other on the color wheel.



47.8267, 17.9543, 12.2627



47.8255, 8.6481, 17.6296



47.8267, -2.9729, 19.2548

Triad

The Triadic color harmony groups three colors that are evenly spaced from another and form a triangle on the color wheel.



47.8267, 8.6460, 17.6302



47.8267, -22.7654, 2.2029



47.8267, 9.4395, -19.2121

Complementary

The Complementary color scheme is a pair of colors which are on the opposite of each other on the color wheel.



47.8255, 8.6481, 17.6296



47.2131, -7.5560, -16.9506

Split Complementary

Split-complementary colors differ from the complementary color scheme. The scheme consists of three colors, the original color and two neighbors of the complement color.



47.8267, -2.1346, -23.6505



47.8255, 8.6481, 17.6296



47.8267, -20.1007, -9.6164

Square

The Square scheme is like the rectangle color scheme, but the four colors are evenly spaced on the color wheel.



47.8267, 8.6460, 17.6302



47.8267, -20.4563, 11.7205



47.8267, -12.8105, -19.7834



47.8267, 18.4421, -8.7597

Rectangle

The Rectangle color scheme consists of four colors that form a rectangle on the color wheel.



47.8255, 8.6481, 17.6296



47.8267, -10.2719, 18.3982



47.8267, -12.8105, -19.7834



47.8267, 5.6856, -21.5544

Sweetspot

The Sweet Spot groups the original color and five complimentary colors.



47.8267, 8.6460, 17.6302



76.8965, -0.2247, 11.3870



41.6069, 30.3697, -7.1289



35.9525, 0.2094, 5.8317



92.0917, -4.9138, 5.0035



39.3538, -2.0998, 2.1382

Same Dimension

The Same Dimension uses a secret algorithm to generate beautiful new colors.



47.8267, 8.6460, 17.6302



60.3994, 15.9749, 26.2665



58.1836, -9.0743, 25.8365



28.3469, -0.6309, 3.2558



31.1042, 25.2719, 19.6087



5.8053, 1.7932, 3.6086

Inverse Universe

The Inverse Universe completely reimagines the original color for something new.



47.2131, -7.5560, -16.9506



59.3961, -9.7746, -28.9298



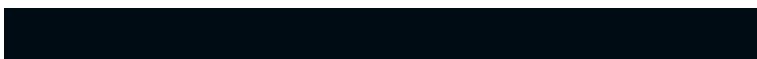
36.9368, 10.4172, -35.7411



28.2868, -2.2862, -0.2549



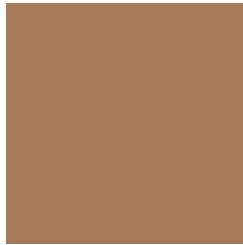
29.7641, 0.0845, -37.3850



5.5944, -1.4825, -3.7922

Previews

White Background



This preview shows how the HunterLab color 47.8255, 8.6481, 17.6296 looks on a white background.

Color Contrast Check

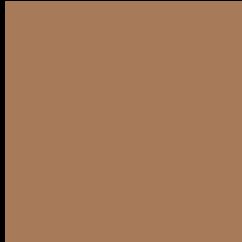
Large Text (above 18pt) WCAG AA ✓ Pass

Any Text WCAG AA × Fail

Large Text (above 18pt) WCAG AAA × Fail

Any Text WCAG AAA × Fail

Black Background



This preview shows how the HunterLab color 47.8255, 8.6481, 17.6296 looks on a black background.

Color Contrast Check

Large Text (above 18pt) WCAG AA ✓ Pass

Any Text WCAG AA ✓ Pass

Large Text (above 18pt) WCAG AAA ✓ Pass

Any Text WCAG AAA × Fail

If you want to check with other color combinations, try the [Color Contrast Checker](#).

HunterLab 47.8255, 8.6481, 17.6296 Background



This preview shows how black text looks on a background with the HunterLab color 47.8255, 8.6481, 17.6296.



This preview shows how white text looks on a background with the HunterLab color 47.8255, 8.6481,

Color Blindness Simulation

Color vision deficiency is a very complex topic, and I could not describe the different causes any better than Wikipedia does, so if you want to learn more, you should check out their [article about color blindness](#).

Dichromacy



Original Color

47.8255, 8.6481, 17.6296

Protanopia

48.0224, -4.3946, 16.4398

Deuteranopia

47.8666, 3.3628, 17.8473



Tritanopia

47.7231, 16.3689, 5.1705

Trichromacy



Original Color

47.8255, 8.6481, 17.6296

Protanomaly

47.7577, 0.3614, 16.5778

Deuteranomaly

47.9224, 4.9147, 17.9225

Tritanomaly

47.7712, 13.3253, 10.2799

Monochromacy



Original Color

47.8255, 8.6481, 17.6296

Achromatopsia

48.0354, -2.5630, 2.6099

Achromatomaly

47.6890, 1.1626, 8.4825

CSS Examples

Text

The CSS property to change the color of the text to HunterLab 47.8255, 8.6481, 17.6296 is called "color". The color property can be set on classes, ids or directly on the HTML element.

This example shows how text in the color `rgb(167, 122, 90)` looks like.

```
.text, #text, p{  
    color:rgb(167, 122, 90)  
}
```

If you want to add a text shadow in that color use the text-shadow property, you can generate a text shadow directly with our [CSS Text Shadow Generator](#).

Here you see how black text with a 4 pixel rgb(167, 122, 90) colored shadow looks like.

```
.shadow{ text-shadow: 4px 4px 2px rgb(167, 122, 90) }
```

Border

The CSS property to change the border of an element to HunterLab 47.8255, 8.6481, 17.6296 is called "border". The border property can be set on classes, ids or directly on the HTML element.

This example shows the color as border, it can be applied via the CSS property "border" or "border-color".

```
.border, #border, table{ border:4px solid rgb(167, 122, 90) }
```


If only the border color should be changed use the property `border-color`.

```
.border{ border-color:rgb(167, 122, 90) }
```

If you want to add a box shadow in that color use:

Here you see how a box with a 4 pixel `rgb(167, 122, 90)` colored shadow looks like.

```
.boxshadow{ -moz-box-shadow:4px 4px 4px  
4px rgb(167, 122, 90); -webkit-box-  
shadow:4px 4px 4px 4px rgb(167, 122, 90);  
box-shadow:4px 4px 4px 4px rgb(167, 122,  
90) }
```

Background

The CSS property to change the background color of an element to HunterLab 47.8255, 8.6481, 17.6296 is called "background". The background property can be set on classes, ids or directly on the HTML element.

```
.background, #background, body{  
background: rgb(167, 122, 90) }
```

If only the background color should be changed can be used:

```
.background{ background-color: rgb(167,  
122, 90) }
```

This example shows the color as background, it is applied via the CSS property "background".

To optimize and compress your CSS code, you can use our [online CSS compressor and optimizer](#) based on csstidy. If you want to create a linear or radial gradient as background or border, check our [CSS Gradient Generator](#).

Hey! You found this booklet interesting? Support Converting Colors with the new Membership Option!

The pro membership hides all ads, plus gives you double the colors in the color bucket, and more awesome pro features!

[Learn more, Memberships starting at \\$2.50/m!](#)

**Follow me
on Twitter!**

@ConvertingColor