

Converting Colors

HunterLab(47.8533, 41.5837,
-0.1179)

Have a look what the booklet for
HunterLab(47.8533, 41.5837,
-0.1179) contains.

HunterLab(47.8392, 41.8539, -0.0617)	3
<i>Conversions</i>	4
<i>Details</i>	6
<i>Harmonies</i>	12
<i>Previews</i>	24
<i>Color Blindness Simulation</i>	28
<i>CSS Examples</i>	31

Color

**HunterLab(47.8392, 41.8539,
-0.0617)**

Conversions

Conversions Part 1

Format	Color
Hex	CC5F8B
RGB	204, 95, 139
RGB Percent	80%, 37%, 55%
CMY	0.2000, 0.6274, 0.4549
CMYK	0.00, 0.53, 0.32, 0.20
HSL	336°, 52%, 59%
HSV	336°, 53%, 80%
XYZ	33.6543, 22.8859, 27.0697
YIQ	132.6070, 50.8400, 36.7920

Conversions

Conversions Part 2

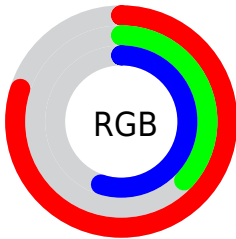
Format	Color
RYB	204, 95, 139
Decimal	13393803
CIELab	54.96, 47.89, -3.42
CIElCh	55, 48.009, 355.913
Yxy	22.8870, 0.4025, 0.2737
Android (android.graphics.Color)	4291583883 (0xFFCC5F8B)
YUV	132.6070, 3.1517, 62.6117
Hunter-Lab	47.8392, 41.8539, -0.0617

Details

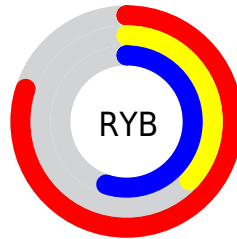
The HunterLab color **47.8392, 41.8539, -0.0617** is a dark color, and the websafe version is hex **CC6699**. The color can be described as middle muted rose. A complement of this color would be **69.3955, -37.4373, 13.6888**, and the grayscale version is **48.2502, -2.5745, 2.6215**.

A 20% lighter version of the original color is **68.2354, 41.4736, -0.5591**, and **29.1722, 38.4594, -0.5596** is the 20% darker color. If you saturate the color by 10%, you get **43.9822, 49.7014, 0.9808**, and if you desaturate by 10%, it is **52.3751, 33.3479, -0.3668**.

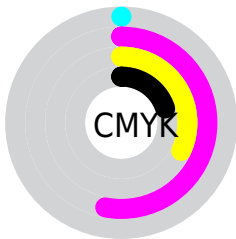
Distribution



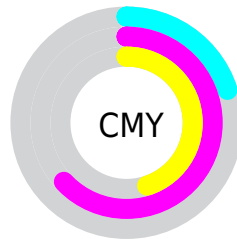
- Red (80%)
- Green (37%)
- Blue (55%)



- Red (80%)
- Yellow (37%)
- Blue (55%)



- Cyan (0%)
- Magenta (53%)
- Yellow (32%)
- Black (20%)



- Cyan (20%)
- Magenta (63%)
- Yellow (45%)

Brightness & Saturation Gradients

These gradients show how the HunterLab color 47.8392, 41.8539, -0.0617 changes by changing the brightness by 10 percent. The first figure shows a shift by +10% for each color and the second figure -10%.

Similar to the brightness gradients but the following saturation gradients show a change of the HunterLab color 47.8392, 41.8539, -0.0617 by changing the saturation by 10% instead.

■ 47.8392, 41.8539,
-0.0617

■ 47.8392, 41.8539,
-0.0617

163.4455, 52.7460,
4.9454

■ 38.0922, 40.1339,
-0.4075

■ 69.4318, 44.9439,
0.7808

■ 29.1141, 38.3095,
-0.6980

■ 81.1914, 46.3278,
1.2672

■ 20.9791, 36.4124,
-0.9238

■ 93.5488, 47.6118,
1.7932

■ 13.7856, 34.5645,
-1.0734

■ 106.4763, 48.8024,
2.3565

■ 7.4070, 35.4193,
-1.5117

119.9500, 49.9058,
2.9550

0.0000, INF, NaN

0.0000, NaN, NaN

133.9484, 50.9276,

3.5870

0.0000, NaN, NaN

148.4526, 51.8728,
4.2509

0.0000, NaN, NaN

■ 47.8392, 41.8539,
-0.0617

■ 47.8392, 41.8539,
-0.0617

■ 43.9822, 49.7014,
0.9808

■ 52.3751, 33.3479,
-0.3668

■ 40.8964, 56.3435,
2.8165

■ 57.4869, 24.5920,
-0.0445

■ 38.6520, 61.1669,
5.4044

■ 63.0860, 15.8277,
0.7919

■ 37.2555, 63.7399,
8.5585

■ 69.0961, 7.1834,
2.0406

■ 36.6767, 64.4852,
10.7138

■ 75.4553, -1.2860,
3.6178

■ 82.1134, -9.5677,
5.4581

■ 89.0305, -17.6708,
7.5111

■ 95.0960, -24.0443,
8.5445

■ 95.4805, -21.8657,
3.0569

Harmonies

Analogous

The Analogous color harmony consists of three colors that are next to each other on the color wheel.



47.8404, 33.3937, -22.5845



47.8392, 41.8539, -0.0617



47.8404, 36.9069, 15.9244

Triad

The Triadic color harmony groups three colors that are evenly spaced from another and form a triangle on the color wheel.



47.8404, 41.8510, -0.0605



47.8404, -18.1390, 25.1227



47.8404, -22.1477, -38.3559

Complementary

The Complementary color scheme is a pair of colors which are on the opposite of each other on the color wheel.



47.8392, 41.8539, -0.0617



69.3955, -37.4373, 13.6888

Split Complementary

Split-complementary colors differ from the complementary color scheme. The scheme consists of three colors, the original color and two neighbors of the complement color.



47.8404, -32.3091, -16.1661



47.8392, 41.8539, -0.0617



47.8404, -30.2736, 18.8287

Square

The Square scheme is like the rectangle color scheme, but the four colors are evenly spaced on the color wheel.



47.8404, 41.8510, -0.0605



47.8404, 0.1996, 26.5275



47.8404, -35.0226, 5.1237



47.8404, -5.2490, -49.7121

Rectangle

The Rectangle color scheme consists of four colors that form a rectangle on the color wheel.



47.8392, 41.8539, -0.0617



47.8404, 27.0482, 22.0508



47.8404, -35.0226, 5.1237



47.8404, -26.3499, -31.5661

Sweetspot

The Sweet Spot groups the original color and five complimentary colors.



47.8404, 41.8510, -0.0605



86.7210, 12.3162, 2.1327



44.5801, 38.9344, -47.8251



39.3691, 6.7692, 0.8260

0.0000, NaN, NaN



46.2646, -2.4686, 2.5136

Same Dimension

The Same Dimension uses a secret algorithm to generate beautiful new colors.



47.8404, 41.8510, -0.0605



55.9795, 65.2743, 1.5320



48.5616, 32.3727, 17.2701



33.5968, 1.7570, 1.2389



29.1275, 51.2689, 8.0676



6.7275, 12.0525, 0.2273

Inverse Universe

The Inverse Universe completely reimagines the original color for something new.



47.8404, 41.8510, -0.0605



55.9795, 65.2743, 1.5320



67.6654, -25.7800, -8.8121



33.5968, 1.7570, 1.2389



29.1275, 51.2689, 8.0676



6.7275, 12.0525, 0.2273

Previews

White Background



This preview shows how the HunterLab color 47.8392, 41.8539, -0.0617 looks on a white background.

Color Contrast Check

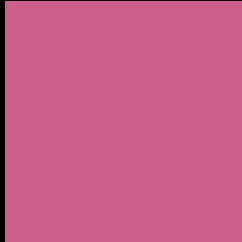
Large Text (above 18pt) WCAG AA ✓ Pass

Any Text WCAG AA × Fail

Large Text (above 18pt) WCAG AAA × Fail

Any Text WCAG AAA × Fail

Black Background



This preview shows how the HunterLab color 47.8392, 41.8539, -0.0617 looks on a black background.

Color Contrast Check

Large Text (above 18pt) WCAG AA ✓ Pass

Any Text WCAG AA ✓ Pass

Large Text (above 18pt) WCAG AAA ✓ Pass

Any Text WCAG AAA × Fail

If you want to check with other color combinations, try the [Color Contrast Checker](#).

HunterLab 47.8392, 41.8539, -0.0617 Background



This preview shows how black text looks on a background with the HunterLab color 47.8392, 41.8539, -0.0617.



This preview shows how white text looks on a background with the HunterLab color 47.8392, 41.8539, -0.0617.

-0.0617.

Color Blindness Simulation

Color vision deficiency is a very complex topic, and I could not describe the different causes any better than Wikipedia does, so if you want to learn more, you should check out their [article about color blindness](#).

Dichromacy



Original Color

47.8392, 41.8539, -0.0617

Protanopia

48.1676, 1.2935, -12.3722

Deuteranopia

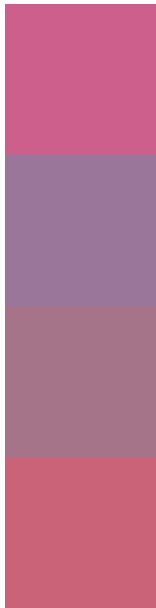
48.0509, 3.2977, 1.8367



Tritanopia

47.7573, 33.9658, 12.4090

Trichromacy



Original Color

47.8392, 41.8539, -0.0617

Protanomaly

47.0744, 14.8342, -9.2384

Deuteranomaly

47.3026, 16.9003, 0.2482

Tritanomaly

47.7621, 36.5651, 8.4057

Monochromacy



Original Color

47.8392, 41.8539, -0.0617

Achromatopsia

48.4304, -2.5841, 2.6313

Achromatomaly

47.2375, 12.8167, 0.5619

CSS Examples

Text

The CSS property to change the color of the text to HunterLab 47.8392, 41.8539, -0.0617 is called "color". The color property can be set on classes, ids or directly on the HTML element.

This example shows how text in the color `rgb(204, 95, 139)` looks like.

```
.text, #text, p{  
    color:rgb(204, 95, 139)  
}
```

If you want to add a text shadow in that color use the text-shadow property, you can generate a text shadow directly with our [CSS Text Shadow Generator](#).

Here you see how black text with a 4 pixel rgb(204, 95, 139) colored shadow looks like.

```
.shadow{ text-shadow: 4px 4px 2px rgb(204, 95, 139) }
```

Border

The CSS property to change the border of an element to HunterLab 47.8392, 41.8539, -0.0617 is called "border". The border property can be set on classes, ids or directly on the HTML element.

This example shows the color as border, it can be applied via the CSS property "border" or "border-color".

```
.border, #border, table{ border:4px solid rgb(204, 95, 139) }
```


If only the border color should be changed use the property `border-color`.

```
.border{ border-color:rgb(204, 95, 139) }
```

If you want to add a box shadow in that color use:

Here you see how a box with a 4 pixel `rgb(204, 95, 139)` colored shadow looks like.

```
.boxshadow{ -moz-box-shadow:4px 4px 4px  
4px rgb(204, 95, 139); -webkit-box-  
shadow:4px 4px 4px 4px rgb(204, 95, 139);  
box-shadow:4px 4px 4px 4px rgb(204, 95,  
139) }
```

Background

The CSS property to change the background color of an element to HunterLab 47.8392, 41.8539, -0.0617 is called "background". The background property can be set on classes, ids or directly on the HTML element.

```
.background, #background, body{  
background: rgb(204, 95, 139) }
```

If only the background color should be changed can be used:

```
.background{ background-color: rgb(204, 95,  
139) }
```

This example shows the color as background, it is applied via the CSS property "background".

To optimize and compress your CSS code, you can use our [online CSS compressor and optimizer](#) based on csstidy. If you want to create a linear or radial gradient as background or border, check our [CSS Gradient Generator](#).

Hey! You found this booklet interesting? Support Converting Colors with the new Membership Option!

The pro membership hides all ads, plus gives you double the colors in the color bucket, and more awesome pro features!

[Learn more, Memberships starting at \\$2.50/m!](#)

**Follow me
on Twitter!**

@ConvertingColor