

Converting Colors

HunterLab(47.8851, 17.0407,
9.1726)

Have a look what the booklet for
HunterLab(47.8851, 17.0407,
9.1726) contains.

HunterLab(47.8181, 17.3939, 9.2828)	3
<i>Conversions</i>	4
<i>Details</i>	6
<i>Harmonies</i>	12
<i>Previews</i>	24
<i>Color Blindness Simulation</i>	28
<i>CSS Examples</i>	31

Color

**HunterLab(47.8181, 17.3939,
9.2828)**

Conversions

Conversions Part 1

Format	Color
Hex	AF7474
RGB	175, 116, 116
RGB Percent	69%, 45%, 45%
CMY	0.3137, 0.5451, 0.5451
CMYK	0.00, 0.34, 0.34, 0.31
HSL	0°, 27%, 57%
HSV	0°, 34%, 69%
XYZ	27.0770, 22.8657, 19.5094
YIQ	133.6410, 35.1640, 12.5080

Conversions

Conversions Part 2

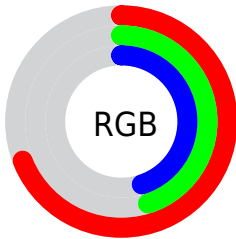
Format	Color
R_{YB}	175, 116, 116
Decimal	11498612
CIE _{Lab}	54.93, 23.24, 9.55
CIE _{LCh}	55, 25.129, 22.332
Yxy	22.8668, 0.3899, 0.3292
Android (android.graphics.Color)	4289688692 (0xFFAF7474)
YUV	133.6410, -8.6970, 36.2718
Hunter-Lab	47.8181, 17.3939, 9.2828

Details

The HunterLab color **47.8181, 17.3939, 9.2828** is a dark color, and the websafe version is hex **996666**. A complement of this color would be **61.2101, -18.8455, -1.8978**, and the grayscale version is **48.7084, -2.5990, 2.6464**.

A 20% lighter version of the original color is **69.5406, 18.2859, 11.5856**, and **29.1489, 15.9565, 7.1170** is the 20% darker color. If you saturate the color by 10%, you get **43.4000, 24.0869, 11.2086**, and if you desaturate by 10%, it is **52.6636, 10.8917, 7.4546**.

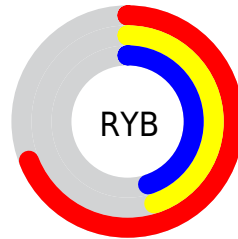
Distribution



Red (69%)

Green (45%)

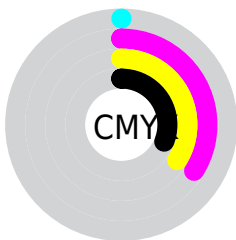
Blue (45%)



Red (69%)

Yellow (45%)

Blue (45%)

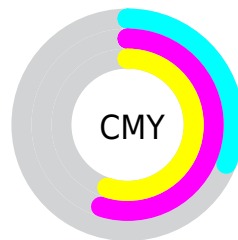


Cyan (0%)

Magenta (34%)

Yellow (34%)

Black (31%)



Cyan (31%)

Magenta (55%)

Yellow (55%)

Brightness & Saturation Gradients

These gradients show how the HunterLab color 47.8181, 17.3939, 9.2828 changes by changing the brightness by 10 percent. The first figure shows a shift by +10% for each color and the second figure -10%.

Similar to the brightness gradients but the following saturation gradients show a change of the HunterLab color 47.8181, 17.3939, 9.2828 by changing the saturation by 10% instead.

47.8181, 17.3939,
9.2828

47.8181, 17.3939,
9.2828

163.4136, 20.0869,
19.4155

38.0725, 16.6787,
8.1833

69.4079, 18.5100,
11.4762

29.0962, 15.8440,
7.0687

81.1661, 18.9372,
12.5785

20.9630, 14.8697,
5.9242

93.5223, 19.2876,
13.6890

13.7716, 13.7377,
4.7207

106.4487, 19.5679,
14.8095

7.3914, 13.9009,
5.1739

119.9212, 19.7836,
15.9415

0.0000, INF, NaN

0.0000, NaN, NaN

133.9186, 19.9394,

17.0861

0.0000, NaN, NaN

148.4217, 20.0394,
18.2439

0.0000, NaN, NaN

■ 47.8181, 17.3939,
9.2828

■ 47.8181, 17.3939,
9.2828

■ 43.4000, 24.0869,
11.2086

■ 52.6636, 10.8917,
7.4546

■ 39.4892, 30.8244,
13.1844

■ 57.8640, 4.6468,
5.7367

■ 36.1801, 37.3127,
15.1200

■ 63.3645, -1.3355,
4.1285

■ 33.5648, 43.1014,
16.8710

■ 69.1210, -7.0735,
2.6205

■ 31.7098, 47.6472,
18.2602

■ 75.0984, -12.5959,
1.2007

■ 30.6231, 50.5110,
19.1410

■ 81.2689, -17.9335,
-0.1432

■ 30.1898, 51.6988,
19.5079

■ 87.6102, -23.1155,
-1.4227

■ 93.7305, -27.8844,
-2.5768

Harmonies

Analogous

The Analogous color harmony consists of three colors that are next to each other on the color wheel.



47.8193, 18.9295, -0.0064



47.8181, 17.3939, 9.2828



47.8193, 10.2941, 15.3486

Triad

The Triadic color harmony groups three colors that are evenly spaced from another and form a triangle on the color wheel.



47.8193, 17.3917, 9.2836



47.8193, -17.3806, 12.8323



47.8193, -5.1941, -20.3569

Complementary

The Complementary color scheme is a pair of colors which are on the opposite of each other on the color wheel.



47.8181, 17.3939, 9.2828



61.2101, -18.8455, -1.8978

Split Complementary

Split-complementary colors differ from the complementary color scheme. The scheme consists of three colors, the original color and two neighbors of the complement color.



47.8193, -14.1744, -15.0425



47.8181, 17.3939, 9.2828



47.8193, -20.8080, 5.0730

Square

The Square scheme is like the rectangle color scheme, but the four colors are evenly spaced on the color wheel.



47.8193, 17.3917, 9.2836



47.8193, -9.9201, 17.0713



47.8193, -19.6865, -5.2068



47.8193, 5.2867, -18.5562

Rectangle

The Rectangle color scheme consists of four colors that form a rectangle on the color wheel.



47.8181, 17.3939, 9.2828



47.8193, 3.6698, 17.4163



47.8193, -19.6865, -5.2068



47.8193, -8.4751, -19.3100

Sweetspot

The Sweet Spot groups the original color and five complimentary colors.



47.8193, 17.3917, 9.2836



80.0015, 3.3444, 6.8989



49.6992, 26.7459, -17.2915



37.2435, 2.1013, 3.3942



94.3401, -5.0338, 5.1257



41.3092, -2.2042, 2.2444

Same Dimension

The Same Dimension uses a secret algorithm to generate beautiful new colors.



47.8193, 17.3917, 9.2836



59.8022, 29.5080, 14.2105



55.4789, 2.7611, 16.5758



28.3115, 0.9271, 2.3554



25.5480, 43.7497, 16.5085



4.2615, 7.2960, 2.7536

Inverse Universe

The Inverse Universe completely reimagines the original color for something new.



61.2101, -18.8455, -1.8978



81.0552, -28.4485, -3.6844



52.1654, -5.2567, -14.0446



30.1198, -3.8984, 0.8683



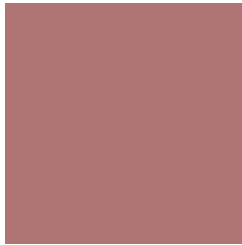
49.1631, -26.0619, -5.1895



8.2001, -4.3471, -0.8653

Previews

White Background



This preview shows how the HunterLab color 47.8181, 17.3939, 9.2828 looks on a white background.

Color Contrast Check

Large Text (above 18pt) WCAG AA ✓ Pass

Any Text WCAG AA × Fail

Large Text (above 18pt) WCAG AAA × Fail

Any Text WCAG AAA × Fail

Black Background



This preview shows how the HunterLab color 47.8181, 17.3939, 9.2828 looks on a black background.

Color Contrast Check

Large Text (above 18pt) WCAG AA ✓ Pass

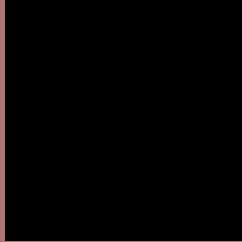
Any Text WCAG AA ✓ Pass

Large Text (above 18pt) WCAG AAA ✓ Pass

Any Text WCAG AAA × Fail

If you want to check with other color combinations, try the [Color Contrast Checker](#).

HunterLab 47.8181, 17.3939, 9.2828 Background



This preview shows how black text looks on a background with the HunterLab color 47.8181, 17.3939, 9.2828.



This preview shows how white text looks on a background with the HunterLab color 47.8181, 17.3939, 9.2828.

9.2828.

Color Blindness Simulation

Color vision deficiency is a very complex topic, and I could not describe the different causes any better than Wikipedia does, so if you want to learn more, you should check out their [article about color blindness](#).

Dichromacy



Original Color

47.8181, 17.3939, 9.2828

Protanopia

47.8770, -2.1061, 5.8503

Deuteranopia

47.9301, 3.2275, 9.8981



Tritanopia

47.9028, 19.2890, 6.2535

Trichromacy



Original Color

47.8181, 17.3939, 9.2828

Protanomaly

47.7349, 4.3014, 7.0214

Deuteranomaly

47.8302, 8.3818, 9.5137

Tritanomaly

47.8247, 18.8964, 7.3744

Monochromacy



Original Color

47.8181, 17.3939, 9.2828

Achromatopsia

48.8260, -2.6052, 2.6528

Achromatomaly

48.0631, 4.3337, 4.9233

CSS Examples

Text

The CSS property to change the color of the text to HunterLab 47.8181, 17.3939, 9.2828 is called "color". The color property can be set on classes, ids or directly on the HTML element.

This example shows how text in the color `rgb(175, 116, 116)` looks like.

```
.text, #text, p{  
    color:rgb(175, 116, 116)  
}
```

If you want to add a text shadow in that color use the text-shadow property, you can generate a text shadow directly with our [CSS Text Shadow Generator](#).

Here you see how black text with a 4 pixel rgb(175, 116, 116) colored shadow looks like.

```
.shadow{ text-shadow: 4px 4px 2px rgb(175, 116, 116) }
```

Border

The CSS property to change the border of an element to HunterLab 47.8181, 17.3939, 9.2828 is called "border". The border property can be set on classes, ids or directly on the HTML element.

This example shows the color as border, it can be applied via the CSS property "border" or "border-color".

```
.border, #border, table{ border:4px solid rgb(175, 116, 116) }
```


If only the border color should be changed use the property `border-color`.

```
.border{ border-color:rgb(175, 116, 116) }
```

If you want to add a box shadow in that color use:

Here you see how a box with a 4 pixel `rgb(175, 116, 116)` colored shadow looks like.

```
.boxshadow{ -moz-box-shadow:4px 4px 4px  
4px rgb(175, 116, 116); -webkit-box-  
shadow:4px 4px 4px 4px rgb(175, 116, 116);  
box-shadow:4px 4px 4px 4px rgb(175, 116,  
116) }
```

Background

The CSS property to change the background color of an element to HunterLab 47.8181, 17.3939, 9.2828 is called "background". The background property can be set on classes, ids or directly on the HTML element.

```
.background, #background, body{  
background: rgb(175, 116, 116) }
```

If only the background color should be changed can be used:

```
.background{ background-color: rgb(175,  
116, 116) }
```

This example shows the color as background, it is applied via the CSS property "background".

To optimize and compress your CSS code, you can use our [online CSS compressor and optimizer](#) based on csstidy. If you want to create a linear or radial gradient as background or border, check our [CSS Gradient Generator](#).

Hey! You found this booklet interesting? Support Converting Colors with the new Membership Option!

The pro membership hides all ads, plus gives you double the colors in the color bucket, and more awesome pro features!

[Learn more, Memberships starting at \\$2.50/m!](#)

**Follow me
on Twitter!**

@ConvertingColor