

Converting Colors

HunterLab(47.8851, 19.6579,
10.7618)

Have a look what the booklet for
HunterLab(47.8851, 19.6579,
10.7618) contains.

HunterLab(47.8621, 19.7875, 10.8494)	3
<i>Conversions</i>	4
<i>Details</i>	6
<i>Harmonies</i>	12
<i>Previews</i>	24
<i>Color Blindness Simulation</i>	28
<i>CSS Examples</i>	31

Color

**HunterLab(47.8621, 19.7875,
10.8494)**

Conversions

Conversions Part 1

Format	Color
Hex	B47270
RGB	180, 114, 112
RGB Percent	71%, 45%, 44%
CMY	0.2941, 0.5529, 0.5608
CMYK	0.00, 0.37, 0.38, 0.29
HSL	2°, 31%, 57%
HSV	2°, 38%, 71%
XYZ	27.7644, 22.9078, 18.2876
YIQ	133.5060, 39.9780, 13.3700

Conversions

Conversions Part 2

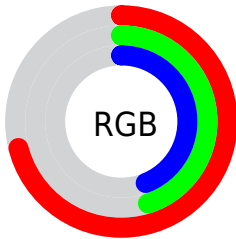
Format	Color
R_{YB}	180, 114, 112
Decimal	11825776
CIE Lab	54.98, 25.82, 12.03
CIE LCh	55, 28.482, 24.980
Yxy	22.9089, 0.4026, 0.3322
Android (android.graphics.Color)	4290015856 (0xFFB47270)
YUV	133.5060, -10.6025, 40.7752
Hunter-Lab	47.8621, 19.7875, 10.8494

Details

The HunterLab color **47.8621, 19.7875, 10.8494** is a dark color, and the websafe version is hex **996666**. A complement of this color would be **62.1123, -20.0674, -3.2960**, and the grayscale version is **48.6610, -2.5964, 2.6438**.

A 20% lighter version of the original color is **69.6383, 21.1094, 13.3775**, and **29.1732, 17.9233, 8.4323** is the 20% darker color. If you saturate the color by 10%, you get **43.5606, 26.5186, 12.8922**, and if you desaturate by 10%, it is **52.6074, 13.2301, 8.8458**.

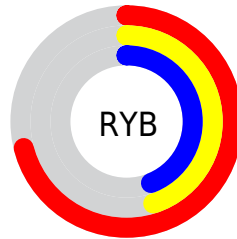
Distribution



Red (71%)

Green (45%)

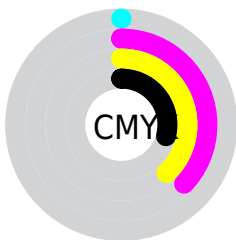
Blue (44%)



Red (71%)

Yellow (45%)

Blue (44%)

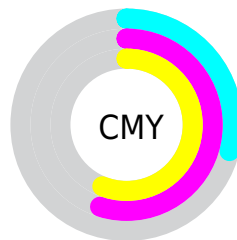


Cyan (0%)

Magenta (37%)

Yellow (38%)

Black (29%)



Cyan (29%)

Magenta (55%)

Yellow (56%)

Brightness & Saturation Gradients

These gradients show how the HunterLab color 47.8621, 19.7875, 10.8494 changes by changing the brightness by 10 percent. The first figure shows a shift by +10% for each color and the second figure -10%.

Similar to the brightness gradients but the following saturation gradients show a change of the HunterLab color 47.8621, 19.7875, 10.8494 by changing the saturation by 10% instead.

■ 47.8621, 19.7875,
10.8494

■ 47.8621, 19.7875,
10.8494

163.4799, 23.3946,
22.0337

■ 38.1133, 18.9521,
9.5902

■ 69.4577, 21.1309,
13.3252

■ 29.1335, 17.9936,
8.2988

■ 81.2187, 21.6659,
14.5547

■ 20.9964, 16.8935,
6.9540

■ 93.5773, 22.1204,
15.7852

■ 13.8007, 15.6396,
5.5166

■ 106.5062, 22.5014,
17.0196

■ 7.4239, 15.7242,
5.1967

119.9810, 22.8147,
18.2601

0.0000, INF, NaN

0.0000, NaN, NaN

133.9806, 23.0653,

19.5085

0.0000, NaN, NaN

148.4859, 23.2574,
20.7661

0.0000, NaN, NaN

■ 47.8621, 19.7875,
10.8494

■ 47.8621, 19.7875,
10.8494

■ 43.5606, 26.5186,
12.8922

■ 52.6074, 13.2301,
8.8458

■ 39.7827, 33.2541,
14.9055

■ 57.7223, 6.9301,
6.9112

■ 36.6201, 39.6751,
16.7784

■ 63.1503, 0.9026,
5.0571

■ 34.1575, 45.3195,
18.3564

■ 68.8451, -4.8658,
3.2828

■ 32.4491, 49.6641,
19.4774

■ 74.7700, -10.4020,
1.5817

■ 31.4826, 52.3145,
20.0989

■ 80.8956, -15.7368,
-0.0547

■ 31.3344, 52.7166,
20.2310

■ 87.1983, -20.9002,
-1.6352

■ 93.6245, -26.1165,
-2.6789

■ 94.0443, -26.7182,
-2.1633

Harmonies

Analogous

The Analogous color harmony consists of three colors that are next to each other on the color wheel.



47.8633, 22.1962, 0.6789



47.8621, 19.7875, 10.8494



47.8633, 11.1661, 17.1201

Triad

The Triadic color harmony groups three colors that are evenly spaced from another and form a triangle on the color wheel.



47.8633, 19.7852, 10.8502



47.8633, -19.7499, 13.4060



47.8633, -4.5247, -24.2543

Complementary

The Complementary color scheme is a pair of colors which are on the opposite of each other on the color wheel.



47.8621, 19.7875, 10.8494



62.1123, -20.0674, -3.2960

Split Complementary

Split-complementary colors differ from the complementary color scheme. The scheme consists of three colors, the original color and two neighbors of the complement color.



47.8633, -14.8883, -18.6449



47.8621, 19.7875, 10.8494



47.8633, -23.1186, 4.4548

Square

The Square scheme is like the rectangle color scheme, but the four colors are evenly spaced on the color wheel.



47.8633, 19.7852, 10.8502



47.8633, -11.7626, 18.3259



47.8633, -21.4283, -7.4306



47.8633, 7.4028, -21.3668

Rectangle

The Rectangle color scheme consists of four colors that form a rectangle on the color wheel.



47.8621, 19.7875, 10.8494



47.8633, 3.4639, 19.1097



47.8633, -21.4283, -7.4306



47.8633, -8.2932, -23.2671

Sweetspot

The Sweet Spot groups the original color and five complimentary colors.



47.8633, 19.7852, 10.8502



82.4990, 3.9433, 7.6490



49.5390, 31.2757, -19.8845



37.9005, 2.3323, 3.7096



95.4677, -5.0939, 5.1869



42.2927, -2.2566, 2.2978

Same Dimension

The Same Dimension uses a secret algorithm to generate beautiful new colors.



47.8633, 19.7852, 10.8502



59.7669, 33.8786, 16.8076



56.3758, 3.3010, 18.6743



29.2302, 0.8504, 2.5042



26.2110, 43.9275, 16.9201



4.7896, 7.3269, 3.0796

Inverse Universe

The Inverse Universe completely reimagines the original color for something new.



62.1123, -20.0674, -3.2960



82.5048, -30.3482, -5.9567



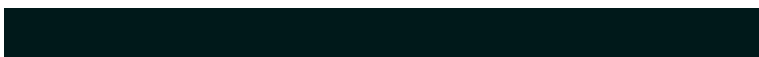
51.9137, -4.8012, -17.4104



30.9640, -3.9141, 0.8086



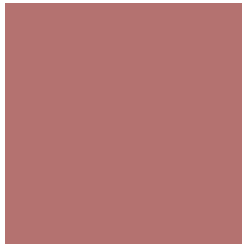
48.6149, -24.7981, -7.2324



8.7001, -4.4909, -1.1797

Previews

White Background



This preview shows how the HunterLab color 47.8621, 19.7875, 10.8494 looks on a white background.

Color Contrast Check

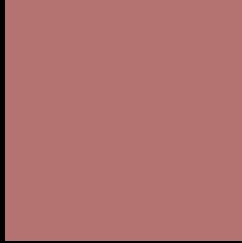
Large Text (above 18pt) WCAG AA ✓ Pass

Any Text WCAG AA × Fail

Large Text (above 18pt) WCAG AAA × Fail

Any Text WCAG AAA × Fail

Black Background



This preview shows how the HunterLab color 47.8621, 19.7875, 10.8494 looks on a black background.

Color Contrast Check

Large Text (above 18pt) WCAG AA ✓ Pass

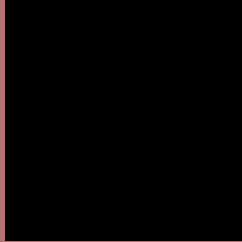
Any Text WCAG AA ✓ Pass

Large Text (above 18pt) WCAG AAA ✓ Pass

Any Text WCAG AAA × Fail

If you want to check with other color combinations, try the [Color Contrast Checker](#).

HunterLab 47.8621, 19.7875, 10.8494 Background



This preview shows how black text looks on a background with the HunterLab color 47.8621, 19.7875, 10.8494.



This preview shows how white text looks on a background with the HunterLab color 47.8621, 19.7875,

Color Blindness Simulation

Color vision deficiency is a very complex topic, and I could not describe the different causes any better than Wikipedia does, so if you want to learn more, you should check out their [article about color blindness](#).

Dichromacy



Original Color

47.8621, 19.7875, 10.8494

Protanopia

48.1678, -2.6958, 7.3675

Deuteranopia

48.0384, 3.4050, 11.4536



Tritanopia

47.9734, 21.7636, 7.5857

Trichromacy



Original Color

47.8621, 19.7875, 10.8494

Protanomaly

47.6944, 5.3855, 8.1768

Deuteranomaly

47.8051, 9.4387, 10.9706

Tritanomaly

47.8978, 21.3875, 8.6728

Monochromacy



Original Color

47.8621, 19.7875, 10.8494

Achromatopsia

48.8260, -2.6052, 2.6528

Achromatomaly

48.2332, 4.8462, 5.5424

CSS Examples

Text

The CSS property to change the color of the text to HunterLab 47.8621, 19.7875, 10.8494 is called "color". The color property can be set on classes, ids or directly on the HTML element.

This example shows how text in the color `rgb(180, 114, 112)` looks like.

```
.text, #text, p{  
    color:rgb(180, 114, 112)  
}
```

If you want to add a text shadow in that color use the text-shadow property, you can generate a text shadow directly with our [CSS Text Shadow Generator](#).

Here you see how black text with a 4 pixel rgb(180, 114, 112) colored shadow looks like.

```
.shadow{ text-shadow: 4px 4px 2px rgb(180, 114, 112) }
```

Border

The CSS property to change the border of an element to HunterLab 47.8621, 19.7875, 10.8494 is called "border". The border property can be set on classes, ids or directly on the HTML element.

This example shows the color as border, it can be applied via the CSS property "border" or "border-color".

```
.border, #border, table{ border:4px solid rgb(180, 114, 112) }
```


If only the border color should be changed use the property `border-color`.

```
.border{ border-color:rgb(180, 114, 112) }
```

If you want to add a box shadow in that color use:

Here you see how a box with a 4 pixel `rgb(180, 114, 112)` colored shadow looks like.

```
.boxshadow{ -moz-box-shadow:4px 4px 4px  
4px rgb(180, 114, 112); -webkit-box-  
shadow:4px 4px 4px 4px rgb(180, 114, 112);  
box-shadow:4px 4px 4px 4px rgb(180, 114,  
112) }
```

Background

The CSS property to change the background color of an element to HunterLab 47.8621, 19.7875, 10.8494 is called "background". The background property can be set on classes, ids or directly on the HTML element.

```
.background, #background, body{  
background: rgb(180, 114, 112) }
```

If only the background color should be changed can be used:

```
.background{ background-color: rgb(180,  
114, 112) }
```

This example shows the color as background, it is applied via the CSS property "background".

To optimize and compress your CSS code, you can use our [online CSS compressor and optimizer](#) based on csstidy. If you want to create a linear or radial gradient as background or border, check our [CSS Gradient Generator](#).

Hey! You found this booklet interesting? Support Converting Colors with the new Membership Option!

The pro membership hides all ads, plus gives you double the colors in the color bucket, and more awesome pro features!

[Learn more, Memberships starting at \\$2.50/m!](#)

**Follow me
on Twitter!**

@ConvertingColor