

Converting Colors

HunterLab(47.8972, 79.3190,
17.1584)

Have a look what the booklet for
HunterLab(47.8972, 79.3190,
17.1584) contains.

HunterLab(47.8905, 79.3205, 17.1981)	3
<i>Conversions</i>	4
<i>Details</i>	6
<i>Harmonies</i>	12
<i>Previews</i>	24
<i>Color Blindness Simulation</i>	28
<i>CSS Examples</i>	31

Color

**HunterLab(47.8905, 79.3205,
17.1981)**

Conversions

Conversions Part 1

Format	Color
Hex	FF1C60
RGB	255, 28, 96
RGB Percent	100%, 11%, 38%
CMY	0.0000, 0.8901, 0.6235
CMYK	0.00, 0.89, 0.62, 0.00
HSL	342°, 100%, 55%
HSV	342°, 89%, 100%
XYZ	43.7665, 22.9350, 13.1864
YIQ	103.6250, 113.4640, 69.2720

Conversions

Conversions Part 2

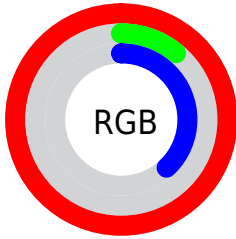
Format	Color
R_{YB}	255, 28, 96
Decimal	16718944
CIE _{Lab}	55.01, 80.04, 23.47
CIE _{LCh}	55, 83.413, 16.345
Yxy	22.9364, 0.5478, 0.2871
Android (android.graphics.Color)	4294909024 (0xFFFF1C60)
YUV	103.6250, -3.7591, 132.7559
Hunter-Lab	47.8905, 79.3205, 17.1981

Details

The HunterLab color **47.8905, 79.3205, 17.1981** is a dark color, and the websafe version is hex **FF3366**. The color can be described as dark washed rose. A complement of this color would be **86.8078, -58.9449, 20.3364**, and the grayscale version is **37.0546, -1.9771, 2.0132**.

A 20% lighter version of the original color is **58.0029, 57.2360, 8.9456**, and **33.4457, 57.9914, 16.0722** is the 20% darker color. If you saturate the color by 10%, you get **46.7620, 80.9597, 21.0605**, and if you desaturate by 10%, it is **50.0666, 74.8404, 13.3567**.

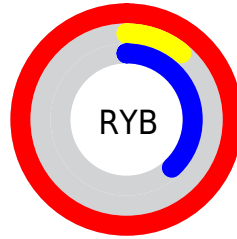
Distribution



Red (100%)

Green (11%)

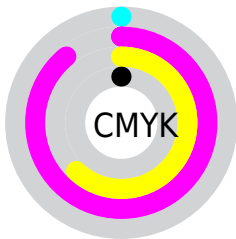
Blue (38%)



Red (100%)

Yellow (11%)

Blue (38%)

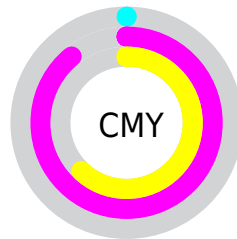


Cyan (0%)

Magenta (89%)

Yellow (62%)

Black (0%)



Cyan (0%)

Magenta (89%)

Yellow (62%)

Brightness & Saturation Gradients

These gradients show how the HunterLab color 47.8905, 79.3205, 17.1981 changes by changing the brightness by 10 percent. The first figure shows a shift by +10% for each color and the second figure -10%.

Similar to the brightness gradients but the following saturation gradients show a change of the HunterLab color 47.8905, 79.3205, 17.1981 by changing the saturation by 10% instead.

47.8905, 79.3205,
17.1981

47.8905, 79.3205,
17.1981

163.5231, 98.7561,
33.4803

38.1399, 76.8628,
15.1554

69.4902, 84.1858,
21.0545

29.1578, 74.5296,
12.9949

81.2529, 86.5263,
22.9033

21.0182, 72.5715,
10.6685

93.6132, 88.7834,
24.7162

13.8197, 71.6527,
8.9539

106.5436, 90.9525,
26.5016

7.4450, 77.4719,
5.2115

120.0200, 93.0326,
28.2661

0.0000, INF, NaN

0.0000, INF, NaN

134.0210, 95.0250,

30.0148

0.0000, NaN, NaN

148.5278, 96.9319,
31.7517

0.0000, NaN, NaN

■ 47.8905, 79.3205,
17.1981

■ 47.8905, 79.3205,
17.1981

■ 46.7620, 80.9597,
21.0605

■ 50.0666, 74.8404,
13.3567

■ 46.6763, 81.0632,
21.4113

■ 53.3993, 67.6185,
9.9587

■ 57.8418, 58.3723,
7.2638

■ 63.2775, 47.9229,
5.3679

■ 69.5673, 36.9310,
4.2450

76.5773, 25.8276,
3.8055

84.1912, 14.8510,
3.9417

92.3132, 4.1097,
4.5514

99.9999, -5.3360,
5.4331

Harmonies

Analogous

The Analogous color harmony consists of three colors that are next to each other on the color wheel.



47.8920, 80.6027, -14.8407



47.8905, 79.3205, 17.1981



47.8920, 52.4708, 29.4940

Triad

The Triadic color harmony groups three colors that are evenly spaced from another and form a triangle on the color wheel.



47.8920, 79.3150, 17.1992



47.8920, -41.7681, 28.9303



47.8920, -17.2540, -108.4337

Complementary

The Complementary color scheme is a pair of colors which are on the opposite of each other on the color wheel.



47.8905, 79.3205, 17.1981



86.8078, -58.9449, 20.3364

Split Complementary

Split-complementary colors differ from the complementary color scheme. The scheme consists of three colors, the original color and two neighbors of the complement color.



47.8920, -40.3310, -69.3584



47.8905, 79.3205, 17.1981



47.8920, -51.5261, 15.2550

Square

The Square scheme is like the rectangle color scheme, but the four colors are evenly spaced on the color wheel.



47.8920, 79.3150, 17.1992



47.8920, -19.8561, 32.2415



47.8920, -51.0879, -18.8054



47.8920, 17.6079, -106.3234

Rectangle

The Rectangle color scheme consists of four colors that form a rectangle on the color wheel.



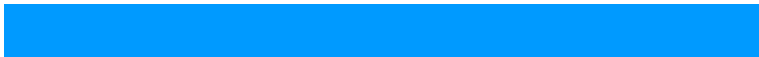
47.8905, 79.3205, 17.1981



47.8920, 27.1181, 31.8821



47.8920, -51.0879, -18.8054



47.8920, -26.4045, -98.9203

Sweetspot

The Sweet Spot groups the original color and five complimentary colors.



47.8920, 79.3150, 17.1992



78.0607, 23.6094, 3.7902



43.1338, 85.6486, -101.9647



34.9538, 12.6702, 1.7720

0.0000, NaN, NaN



46.2646, -2.4686, 2.5136

Same Dimension

The Same Dimension uses a secret algorithm to generate beautiful new colors.



47.8920, 79.3150, 17.1992



46.6764, 81.0635, 21.4114



51.1517, 63.5400, 31.3561



42.5166, 2.1456, 2.0871



33.7742, 58.7220, 14.9815



10.6252, 18.6414, 3.4130

Inverse Universe

The Inverse Universe completely reimagines the original color for something new.



47.8920, 79.3150, 17.1992



46.6764, 81.0635, 21.4114



73.0521, -26.4887, -32.2338



42.5166, 2.1456, 2.0871



33.7742, 58.7220, 14.9815



10.6252, 18.6414, 3.4130

Previews

White Background



This preview shows how the HunterLab color 47.8905, 79.3205, 17.1981 looks on a white background.

Color Contrast Check

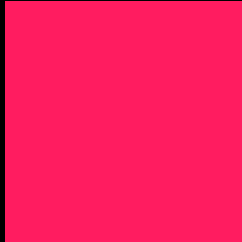
Large Text (above 18pt) WCAG AA ✓ Pass

Any Text WCAG AA × Fail

Large Text (above 18pt) WCAG AAA × Fail

Any Text WCAG AAA × Fail

Black Background



This preview shows how the HunterLab color 47.8905, 79.3205, 17.1981 looks on a black background.

Color Contrast Check

Large Text (above 18pt) WCAG AA ✓ Pass

Any Text WCAG AA ✓ Pass

Large Text (above 18pt) WCAG AAA ✓ Pass

Any Text WCAG AAA × Fail

If you want to check with other color combinations, try the [Color Contrast Checker](#).

HunterLab 47.8905, 79.3205, 17.1981 Background



This preview shows how black text looks on a background with the HunterLab color 47.8905, 79.3205, 17.1981.

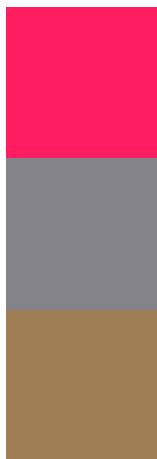


This preview shows how white text looks on a background with the HunterLab color 47.8905, 79.3205,

Color Blindness Simulation

Color vision deficiency is a very complex topic, and I could not describe the different causes any better than Wikipedia does, so if you want to learn more, you should check out their [article about color blindness](#).

Dichromacy



Original Color

47.8905, 79.3205, 17.1981

Protanopia

48.0147, -0.8382, -0.1194

Deuteranopia

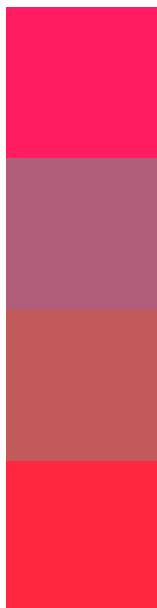
47.9046, 3.3538, 18.9404



Tritanopia

47.8970, 72.3345, 27.8306

Trichromacy



Original Color

47.8905, 79.3205, 17.1981

Protanomaly

43.3389, 30.0460, 1.5954

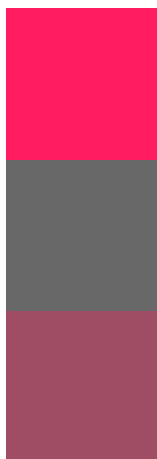
Deuteranomaly

44.1621, 34.7078, 15.1314

Tritanomaly

47.8338, 74.8710, 24.9568

Monochromacy



Original Color

47.8905, 79.3205, 17.1981

Achromatopsia

37.2064, -1.9852, 2.0215

Achromatomaly

36.7143, 29.2509, 3.2527

CSS Examples

Text

The CSS property to change the color of the text to HunterLab 47.8905, 79.3205, 17.1981 is called "color". The color property can be set on classes, ids or directly on the HTML element.

This example shows how text in the color `rgb(255, 28, 96)` looks like.

```
.text, #text, p{  
    color:rgb(255, 28, 96)  
}
```

If you want to add a text shadow in that color use the text-shadow property, you can generate a text shadow directly with our [CSS Text Shadow Generator](#).

Here you see how black text with a 4 pixel rgb(255, 28, 96) colored shadow looks like.

```
.shadow{ text-shadow: 4px 4px 2px rgb(255, 28, 96) }
```

Border

The CSS property to change the border of an element to HunterLab 47.8905, 79.3205, 17.1981 is called "border". The border property can be set on classes, ids or directly on the HTML element.

This example shows the color as border, it can be applied via the CSS property "border" or "border-color".

```
.border, #border, table{ border:4px solid rgb(255, 28, 96) }
```


If only the border color should be changed use the property border-color.

```
.border{ border-color:rgb(255, 28, 96) }
```

If you want to add a box shadow in that color use:

Here you see how a box with a 4 pixel rgb(255, 28, 96) colored shadow looks like.

```
.boxshadow{ -moz-box-shadow:4px 4px 4px  
4px rgb(255, 28, 96); -webkit-box-  
shadow:4px 4px 4px 4px rgb(255, 28, 96);  
box-shadow:4px 4px 4px 4px rgb(255, 28,  
96) }
```

Background

The CSS property to change the background color of an element to HunterLab 47.8905, 79.3205, 17.1981 is called "background". The background property can be set on classes, ids or directly on the HTML element.

```
.background, #background, body{  
background: rgb(255, 28, 96) }
```

If only the background color should be changed can be used:

```
.background{ background-color: rgb(255, 28,  
96) }
```

This example shows the color as background, it is applied via the CSS property "background".

To optimize and compress your CSS code, you can use our [online CSS compressor and optimizer](#) based on csstidy. If you want to create a linear or radial gradient as background or border, check our [CSS Gradient Generator](#).

Hey! You found this booklet interesting? Support Converting Colors with the new Membership Option!

The pro membership hides all ads, plus gives you double the colors in the color bucket, and more awesome pro features!

[Learn more, Memberships starting at \\$2.50/m!](#)

**Follow me
on Twitter!**

@ConvertingColor