

# Converting Colors

HunterLab(47.9325, 81.9378,  
11.2785)

Have a look what the booklet for  
HunterLab(47.9325, 81.9378,  
11.2785) contains.

<b>HunterLab(47.9325, 81.9378, 11.2785)</b> .....	3
<b><i>Conversions</i></b> .....	4
<b><i>Details</i></b> .....	6
<b><i>Harmonies</i></b> .....	12
<b><i>Previews</i></b> .....	24
<b><i>Color Blindness Simulation</i></b> .....	28
<b><i>CSS Examples</i></b> .....	31

# Color

**HunterLab(47.9325, 81.9378,  
11.2785)**

# Conversions

## Conversions Part 1

Format	Color
Hex	FF1472
RGB	255, 20, 114
RGB Percent	100%, 8%, 45%
CMY	0.0000, 0.9214, 0.5529
CMYK	0.00, 0.92, 0.55, 0.00
HSL	336°, 100%, 54%
HSV	336°, 92%, 100%
XYZ	44.5275, 22.9752, 18.0074
YIQ	100.9810, 109.8860, 79.0540

# Conversions

## Conversions Part 2

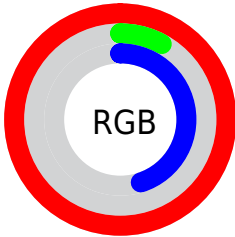
<b>Format</b>	<b>Color</b>
<b>R<sub>YB</sub></b>	255, 20, 114
Decimal	16716914
CIE Lab	55.05, 82.09, 12.72
CIE LCh	55, 83.067, 8.805
Yxy	22.9766, 0.5207, 0.2687
Android (android.graphics.Color)	4294906994 (0xFFFF1472)
YUV	100.9810, 6.4184, 135.0747
Hunter-Lab	47.9325, 81.9378, 11.2785

# Details

The HunterLab color **47.9325, 81.9378, 11.2785** is a dark color, and the websafe version is hex **FF0066**. The color can be described as dark washed rose. A complement of this color would be **86.1647, -62.7739, 28.7807**, and the grayscale version is **36.0235, -1.9221, 1.9572**.

A 20% lighter version of the original color is **58.0320, 61.1026, 0.4597**, and **33.8845, 59.2242, 12.6247** is the 20% darker color. If you saturate the color by 10%, you get **47.1367, 82.7570, 14.6916**, and if you desaturate by 10%, it is **49.7708, 78.5287, 7.1762**.

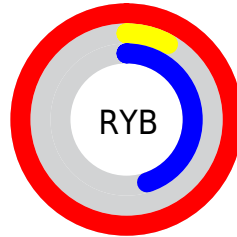
# Distribution



Red (100%)

Green (8%)

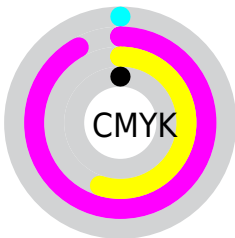
Blue (45%)



Red (100%)

Yellow (8%)

Blue (45%)

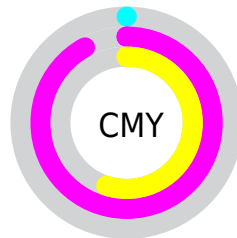


Cyan (0%)

Magenta (92%)

Yellow (55%)

Black (0%)



Cyan (0%)

Magenta (92%)

Yellow (55%)

# Brightness & Saturation Gradients

These gradients show how the HunterLab color 47.9325, 81.9378, 11.2785 changes by changing the brightness by 10 percent. The first figure shows a shift by +10% for each color and the second figure -10%.

Similar to the brightness gradients but the following saturation gradients show a change of the HunterLab color 47.9325, 81.9378, 11.2785 by changing the saturation by 10% instead.



47.9325, 81.9378,  
11.2785

47.9325, 81.9378,  
11.2785

163.5864,  
101.8242, 22.7583

38.1789, 79.4582,  
9.9749

69.5377, 86.8819,  
13.8339

29.1934, 77.1260,  
8.6340

81.3029, 89.2707,  
15.0992

21.0501, 75.2125,  
7.2332

93.6657, 91.5792,  
16.3633

13.8474, 74.4307,  
5.7329

106.5984, 93.8014,  
17.6296

7.4758, 80.6180,  
5.2331

120.0770, 95.9358,  
18.9006

0.0000, INF, NaN

0.0000, INF, NaN

134.0802, 97.9831,

20.1781

0.0000, NaN, NaN

148.5890, 99.9450,  
21.4637

0.0000, NaN, NaN

■ 47.9325, 81.9378,  
11.2785

■ 47.9325, 81.9378,  
11.2785

■ 47.1367, 82.7570,  
14.6916

■ 49.7708, 78.5287,  
7.1762

■ 52.7294, 72.1641,  
3.8129

■ 56.7977, 63.4275,  
1.4356

■ 61.8811, 53.1373,  
0.0977

■ 67.8502, 42.0263,  
-0.2821

74.5724, 30.6140,  
0.1541

81.9286, 19.2123,  
1.2558

89.8189, 7.9809,  
2.8895

98.1618, -3.0147,  
4.9465

# Harmonies

## Analogous

The Analogous color harmony consists of three colors that are next to each other on the color wheel.



47.9339, 76.0592, -26.1867



47.9325, 81.9378, 11.2785



47.9339, 60.6790, 27.6696

# Triad

The Triadic color harmony groups three colors that are evenly spaced from another and form a triangle on the color wheel.



47.9339, 81.9324, 11.2798



47.9339, -37.3813, 30.3090



47.9339, -24.2163, -101.0139

# Complementary

The Complementary color scheme is a pair of colors which are on the opposite of each other on the color wheel.



47.9325, 81.9378, 11.2785



86.1647, -62.7739, 28.7807

# Split Complementary

Split-complementary colors differ from the complementary color scheme. The scheme consists of three colors, the original color and two neighbors of the complement color.



47.9339, -43.9978, -55.9805



47.9325, 81.9378, 11.2785



47.9339, -49.9719, 20.2450

# Square

The Square scheme is like the rectangle color scheme, but the four colors are evenly spaced on the color wheel.



47.9339, 81.9324, 11.2798



47.9339, -12.2753, 32.4449



47.9339, -51.9937, -8.0619



47.9339, 7.9961, -110.6016



# Rectangle

The Rectangle color scheme consists of four colors that form a rectangle on the color wheel.



47.9325, 81.9378, 11.2785



47.9339, 36.7572, 31.2622



47.9339, -51.9937, -8.0619



47.9339, -32.2465, -88.5168

# Sweetspot

The Sweet Spot groups the original color and five complimentary colors.



47.9339, 81.9324, 11.2798



77.5475, 25.8802, 0.5377



39.1159, 82.1476, -117.8600



34.4436, 14.2561, 0.0649

0.0000, NaN, NaN



46.2646, -2.4686, 2.5136



# Same Dimension

The Same Dimension uses a secret algorithm to generate beautiful new colors.



47.9339, 81.9324, 11.2798



47.1368, 82.7572, 14.6916



48.0393, 72.9203, 30.0589



42.5528, 2.3403, 1.5704



34.1135, 59.9696, 10.0341



10.7423, 19.0698, 1.7217



# Inverse Universe

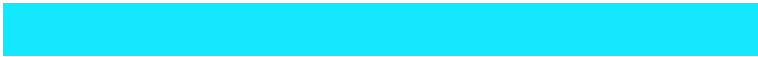
The Inverse Universe completely reimagines the original color for something new.



47.9339, 81.9324, 11.2798



47.1368, 82.7572, 14.6916



80.5006, -36.5342, -20.7154



42.5528, 2.3403, 1.5704



34.1135, 59.9696, 10.0341



10.7423, 19.0698, 1.7217



# Previews

## White Background



This preview shows how the HunterLab color 47.9325, 81.9378, 11.2785 looks on a white background.

## Color Contrast Check

Large Text (above 18pt) WCAG AA ✓ Pass

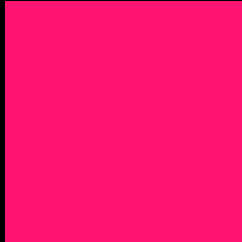
Any Text WCAG AA × Fail

Large Text (above 18pt) WCAG AAA × Fail

Any Text WCAG AAA × Fail



# Black Background



This preview shows how the HunterLab color 47.9325, 81.9378, 11.2785 looks on a black background.

## Color Contrast Check

Large Text (above 18pt) WCAG AA ✓ Pass

Any Text WCAG AA ✓ Pass

Large Text (above 18pt) WCAG AAA ✓ Pass

Any Text WCAG AAA × Fail

If you want to check with other color combinations, try the [Color Contrast Checker](#).

# HunterLab 47.9325, 81.9378, 11.2785 Background



This preview shows how black text looks on a background with the HunterLab color 47.9325, 81.9378, 11.2785.



This preview shows how white text looks on a background with the HunterLab color 47.9325, 81.9378, 11.2785.



# Color Blindness Simulation

Color vision deficiency is a very complex topic, and I could not describe the different causes any better than Wikipedia does, so if you want to learn more, you should check out their [article about color blindness](#).

## Dichromacy



### Original Color

47.9325, 81.9378, 11.2785

### Protanopia

48.2420, 1.6947, -13.4091

### Deuteranopia

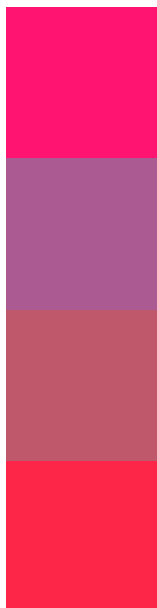
48.0901, 3.2738, 13.8698



## Tritanopia

47.9820, 71.2929, 27.3591

# Trichromacy



## Original Color

47.9325, 81.9378, 11.2785

## Protanomaly

42.8114, 33.2467, -10.6993

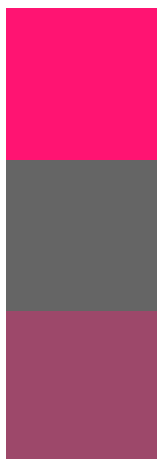
## Deuteranomaly

43.7234, 36.2807, 8.7151

## Tritanomaly

47.6831, 75.1684, 23.0748

# Monochromacy



## Original Color

47.9325, 81.9378, 11.2785

## Achromatopsia

36.0744, -1.9248, 1.9600

## Achromatomaly

35.8377, 31.0398, 0.0676

# CSS Examples

## Text

The CSS property to change the color of the text to HunterLab 47.9325, 81.9378, 11.2785 is called "color". The color property can be set on classes, ids or directly on the HTML element.

This example shows how text in the color `rgb(255, 20, 114)` looks like.

```
.text, #text, p{  
    color:rgb(255, 20, 114)  
}
```

If you want to add a text shadow in that color use the text-shadow property, you can generate a text shadow directly with our [CSS Text Shadow Generator](#).

Here you see how black text with a 4 pixel rgb(255, 20, 114) colored shadow looks like.

```
.shadow{ text-shadow: 4px 4px 2px rgb(255, 20, 114) }
```

## Border

The CSS property to change the border of an element to HunterLab 47.9325, 81.9378, 11.2785 is called "border". The border property can be set on classes, ids or directly on the HTML element.

This example shows the color as border, it can be applied via the CSS property "border" or "border-color".

```
.border, #border, table{ border:4px solid rgb(255, 20, 114) }
```



If only the border color should be changed use the property `border-color`.

```
.border{ border-color:rgb(255, 20, 114) }
```

If you want to add a box shadow in that color use:

Here you see how a box with a 4 pixel `rgb(255, 20, 114)` colored shadow looks like.

```
.boxshadow{ -moz-box-shadow:4px 4px 4px  
4px rgb(255, 20, 114); -webkit-box-  
shadow:4px 4px 4px 4px rgb(255, 20, 114);  
box-shadow:4px 4px 4px 4px rgb(255, 20,  
114) }
```

# Background

The CSS property to change the background color of an element to HunterLab 47.9325, 81.9378, 11.2785 is called "background". The background property can be set on classes, ids or directly on the HTML element.

```
.background, #background, body{  
background: rgb(255, 20, 114) }
```

If only the background color should be changed can be used:

```
.background{ background-color: rgb(255, 20,  
114) }
```

This example shows the color as background, it is applied via the CSS property "background".

To optimize and compress your CSS code, you can use our [online CSS compressor and optimizer](#) based on csstidy. If you want to create a linear or radial gradient as background or border, check our [CSS Gradient Generator](#).

Hey! You found this booklet interesting? Support Converting Colors with the new Membership Option!

The pro membership hides all ads, plus gives you double the colors in the color bucket, and more awesome pro features!

**[Learn more, Memberships starting at \\$2.50/m!](#)**

**Follow me  
on Twitter!**

**@ConvertingColor**