

Converting Colors

HunterLab(47.9532, 77.7890,
13.5198)

Have a look what the booklet for
HunterLab(47.9532, 77.7890,
13.5198) contains.

HunterLab(47.9377, 77.9088, 13.3558)	3
<i>Conversions</i>	4
<i>Details</i>	6
<i>Harmonies</i>	12
<i>Previews</i>	24
<i>Color Blindness Simulation</i>	28
<i>CSS Examples</i>	31

Color

**HunterLab(47.9377, 77.9088,
13.3558)**

Conversions

Conversions Part 1

Format	Color
Hex	FC236C
RGB	252, 35, 108
RGB Percent	99%, 14%, 42%
CMY	0.0118, 0.8626, 0.5765
CMYK	0.00, 0.86, 0.57, 0.01
HSL	340°, 97%, 56%
HSV	340°, 86%, 99%
XYZ	43.4527, 22.9802, 16.3328
YIQ	108.2050, 105.8990, 68.7070

Conversions

Conversions Part 2

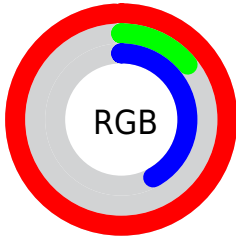
Format	Color
R_{YB}	252, 35, 108
Decimal	16524140
CIE _{Lab}	55.05, 78.92, 16.24
CIE _{LCh}	55, 80.570, 11.627
Yxy	22.9816, 0.5250, 0.2777
Android (android.graphics.Color)	4294714220 (0xFFFC236C)
YUV	108.2050, -0.1011, 126.1082
Hunter-Lab	47.9377, 77.9088, 13.3558

Details

The HunterLab color **47.9377, 77.9088, 13.3558** is a dark color, and the websafe version is hex **FF0066**. The color can be described as dark washed rose. A complement of this color would be **85.5768, -58.7261, 22.1475**, and the grayscale version is **38.7797, -2.0692, 2.1070**.

A 20% lighter version of the original color is **58.7268, 57.8979, 4.0853**, and **33.2089, 57.8857, 13.5944** is the 20% darker color. If you saturate the color by 10%, you get **46.5497, 80.1731, 17.4012**, and if you desaturate by 10%, it is **50.4226, 72.6803, 9.6366**.

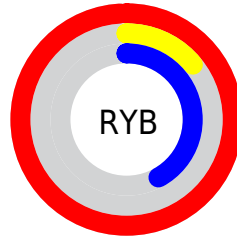
Distribution



Red (99%)

Green (14%)

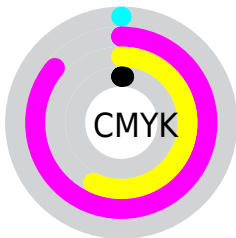
Blue (42%)



Red (99%)

Yellow (14%)

Blue (42%)

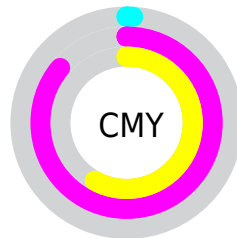


Cyan (0%)

Magenta (86%)

Yellow (57%)

Black (1%)



Cyan (1%)

Magenta (86%)

Yellow (58%)

Brightness & Saturation Gradients

These gradients show how the HunterLab color 47.9377, 77.9088, 13.3558 changes by changing the brightness by 10 percent. The first figure shows a shift by +10% for each color and the second figure -10%.

Similar to the brightness gradients but the following saturation gradients show a change of the HunterLab color 47.9377, 77.9088, 13.3558 by changing the saturation by 10% instead.

■ 47.9377, 77.9088,
13.3558

■ 47.9377, 77.9088,
13.3558

163.5942, 97.0870,
26.3708

■ 38.1837, 75.4646,
11.8170

■ 69.5436, 82.7285,
16.3256

■ 29.1978, 73.1311,
10.2151

■ 81.3091, 85.0413,
17.7771

■ 21.0541, 71.1471,
8.5187

■ 93.6722, 87.2690,
19.2166

■ 13.8509, 70.1461,
6.7880

■ 106.6052, 89.4077,
20.6489

■ 7.4796, 75.5356,
5.2357

■ 120.0841, 91.4570,
22.0779

0.0000, INF, NaN

0.0000, INF, NaN

134.0875, 93.4182,

23.5065

0.0000, NaN, NaN

148.5966, 95.2939,
24.9368

0.0000, NaN, NaN

■ 47.9377, 77.9088,
13.3558

■ 47.9377, 77.9088,
13.3558

■ 46.5497, 80.1731,
17.4012

■ 50.4226, 72.6803,
9.6366

■ 46.2032, 80.5355,
18.9168

■ 54.0333, 64.8960,
6.5876

■ 58.7002, 55.3236,
4.3874

■ 64.3005, 44.7420,
3.0562

■ 70.6985, 33.7410,
2.5166

■ 77.7683, 22.6904,
2.6515

■ 85.4022, 11.7877,
3.3415

■ 93.5121, 1.1189,
4.4815

■ 99.7173, -6.3206,
5.0827

Harmonies

Analogous

The Analogous color harmony consists of three colors that are next to each other on the color wheel.



47.9391, 74.8314, -20.9022



47.9377, 77.9088, 13.3558



47.9391, 55.4731, 28.0313

Triad

The Triadic color harmony groups three colors that are evenly spaced from another and form a triangle on the color wheel.



47.9391, 77.9035, 13.3570



47.9391, -38.1830, 29.4907



47.9391, -21.1613, -99.0339

Complementary

The Complementary color scheme is a pair of colors which are on the opposite of each other on the color wheel.



47.9377, 77.9088, 13.3558



85.5768, -58.7261, 22.1475

Split Complementary

Split-complementary colors differ from the complementary color scheme. The scheme consists of three colors, the original color and two neighbors of the complement color.



47.9391, -41.7243, -58.2545



47.9377, 77.9088, 13.3558



47.9391, -49.5348, 18.1417

Square

The Square scheme is like the rectangle color scheme, but the four colors are evenly spaced on the color wheel.



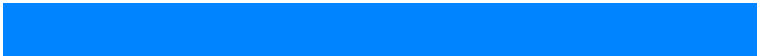
47.9391, 77.9035, 13.3570



47.9391, -14.8238, 32.1632



47.9391, -50.6236, -11.4007



47.9391, 11.0747, -103.9996

Rectangle

The Rectangle color scheme consists of four colors that form a rectangle on the color wheel.



47.9377, 77.9088, 13.3558



47.9391, 31.9146, 31.2428



47.9391, -50.6236, -11.4007



47.9391, -29.4091, -88.2045

Sweetspot

The Sweet Spot groups the original color and five complimentary colors.



47.9391, 77.9035, 13.3570



78.8856, 22.9031, 2.6912



41.7956, 80.9909, -103.4713



35.3139, 12.3874, 1.1901

0.0000, NaN, NaN



46.2646, -2.4686, 2.5136

Same Dimension

The Same Dimension uses a secret algorithm to generate beautiful new colors.



47.9391, 77.9035, 13.3570



46.8274, 81.6201, 19.1994



49.8993, 64.6706, 29.9882



41.6191, 2.1596, 1.8583



33.3835, 58.2610, 13.1170



10.2522, 18.0703, 2.6469

Inverse Universe

The Inverse Universe completely reimagines the original color for something new.



47.9391, 77.9035, 13.3570



46.8274, 81.6201, 19.1994



76.3452, -31.3967, -25.0275



41.6191, 2.1596, 1.8583



33.3835, 58.2610, 13.1170



10.2522, 18.0703, 2.6469

Previews

White Background



This preview shows how the HunterLab color 47.9377, 77.9088, 13.3558 looks on a white background.

Color Contrast Check

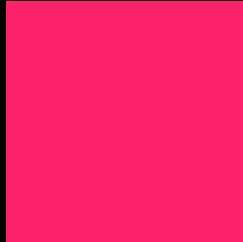
Large Text (above 18pt) WCAG AA ✓ Pass

Any Text WCAG AA × Fail

Large Text (above 18pt) WCAG AAA × Fail

Any Text WCAG AAA × Fail

Black Background



This preview shows how the HunterLab color 47.9377, 77.9088, 13.3558 looks on a black background.

Color Contrast Check

Large Text (above 18pt) WCAG AA ✓ Pass

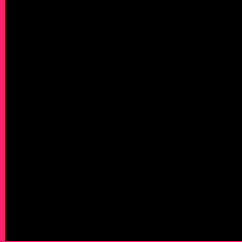
Any Text WCAG AA ✓ Pass

Large Text (above 18pt) WCAG AAA ✓ Pass

Any Text WCAG AAA × Fail

If you want to check with other color combinations, try the [Color Contrast Checker](#).

HunterLab 47.9377, 77.9088, 13.3558 Background



This preview shows how black text looks on a background with the HunterLab color 47.9377, 77.9088, 13.3558.



This preview shows how white text looks on a background with the HunterLab color 47.9377, 77.9088,

Color Blindness Simulation

Color vision deficiency is a very complex topic, and I could not describe the different causes any better than Wikipedia does, so if you want to learn more, you should check out their [article about color blindness](#).

Dichromacy



Original Color

47.9377, 77.9088, 13.3558

Protanopia

48.0850, 0.3706, -7.5234

Deuteranopia

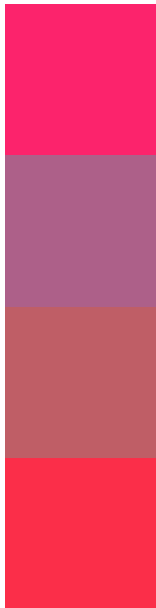
48.0921, 3.0780, 15.4422



Tritanopia

47.9969, 69.5809, 26.6329

Trichromacy



Original Color

47.9377, 77.9088, 13.3558

Protanomaly

43.6533, 29.6428, -4.7265

Deuteranomaly

44.7673, 32.8501, 11.5122

Tritanomaly

47.9002, 72.5508, 22.9838

Monochromacy



Original Color

47.9377, 77.9088, 13.3558

Achromatopsia

38.7246, -2.0663, 2.1040

Achromatomaly

38.0015, 28.1287, 1.7737

CSS Examples

Text

The CSS property to change the color of the text to HunterLab 47.9377, 77.9088, 13.3558 is called "color". The color property can be set on classes, ids or directly on the HTML element.

This example shows how text in the color `rgb(252, 35, 108)` looks like.

```
.text, #text, p{  
    color:rgb(252, 35, 108)  
}
```

If you want to add a text shadow in that color use the text-shadow property, you can generate a text shadow directly with our [CSS Text Shadow Generator](#).

Here you see how black text with a 4 pixel rgb(252, 35, 108) colored shadow looks like.

```
.shadow{ text-shadow: 4px 4px 2px rgb(252, 35, 108) }
```

Border

The CSS property to change the border of an element to HunterLab 47.9377, 77.9088, 13.3558 is called "border". The border property can be set on classes, ids or directly on the HTML element.

This example shows the color as border, it can be applied via the CSS property "border" or "border-color".

```
.border, #border, table{ border:4px solid rgb(252, 35, 108) }
```


If only the border color should be changed use the property border-color.

```
.border{ border-color:rgb(252, 35, 108) }
```

If you want to add a box shadow in that color use:

Here you see how a box with a 4 pixel rgb(252, 35, 108) colored shadow looks like.

```
.boxshadow{ -moz-box-shadow:4px 4px 4px  
4px rgb(252, 35, 108); -webkit-box-  
shadow:4px 4px 4px 4px rgb(252, 35, 108);  
box-shadow:4px 4px 4px 4px rgb(252, 35,  
108) }
```

Background

The CSS property to change the background color of an element to HunterLab 47.9377, 77.9088, 13.3558 is called "background". The background property can be set on classes, ids or directly on the HTML element.

```
.background, #background, body{  
background: rgb(252, 35, 108) }
```

If only the background color should be changed can be used:

```
.background{ background-color: rgb(252, 35,  
108) }
```

This example shows the color as background, it is applied via the CSS property "background".

To optimize and compress your CSS code, you can use our [online CSS compressor and optimizer](#) based on csstidy. If you want to create a linear or radial gradient as background or border, check our [CSS Gradient Generator](#).

Hey! You found this booklet interesting? Support Converting Colors with the new Membership Option!

The pro membership hides all ads, plus gives you double the colors in the color bucket, and more awesome pro features!

[Learn more, Memberships starting at \\$2.50/m!](#)

**Follow me
on Twitter!**

@ConvertingColor