

Converting Colors

HunterLab(47.9592, 56.8194,
0.3499)

Have a look what the booklet for
HunterLab(47.9592, 56.8194,
0.3499) contains.

HunterLab(47.9592, 56.8194, 0.3499)	3
<i>Conversions</i>	4
<i>Details</i>	6
<i>Harmonies</i>	12
<i>Previews</i>	24
<i>Color Blindness Simulation</i>	28
<i>CSS Examples</i>	31

Color

**HunterLab(47.9592, 56.8194,
0.3499)**

Conversions

Conversions Part 1

Format	Color
Hex	DF4E8B
RGB	223, 78, 139
RGB Percent	87%, 31%, 55%
CMY	0.1255, 0.6941, 0.4549
CMYK	0.00, 0.65, 0.38, 0.13
HSL	335°, 69%, 59%
HSV	335°, 65%, 87%
XYZ	37.8160, 23.0008, 26.8726
YIQ	128.3090, 66.8390, 49.7110

Conversions

Conversions Part 2

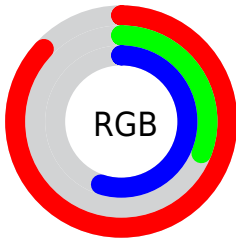
Format	Color
R_{YB}	223, 78, 139
Decimal	14634635
CIE _{Lab}	55.07, 61.39, -2.91
CIE _{LCh}	55, 61.463, 357.285
Yxy	23.0021, 0.4312, 0.2623
Android (android.graphics.Color)	4292824715 (0xFFDF4E8B)
YUV	128.3090, 5.2707, 83.0440
Hunter-Lab	47.9592, 56.8194, 0.3499

Details

The HunterLab color **47.9592, 56.8194, 0.3499** is a dark color, and the websafe version is hex **FF6699**. The color can be described as middle muted rose. A complement of this color would be **75.5012, -46.8916, 18.8567**, and the grayscale version is **46.5453, -2.4835, 2.5289**.

A 20% lighter version of the original color is **65.1105, 48.9520, -4.4334**, and **29.1681, 52.4240, -0.3204** is the 20% darker color. If you saturate the color by 10%, you get **44.7176, 63.8601, 2.4652**, and if you desaturate by 10%, it is **52.0826, 48.2730, -0.8392**.

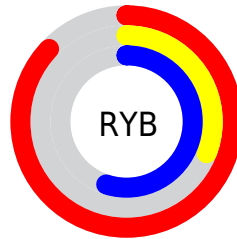
Distribution



Red (87%)

Green (31%)

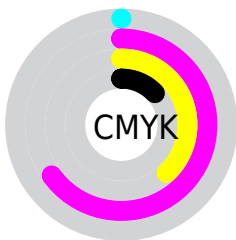
Blue (55%)



Red (87%)

Yellow (31%)

Blue (55%)

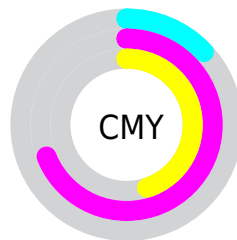


Cyan (0%)

Magenta (65%)

Yellow (38%)

Black (13%)



Cyan (13%)

Magenta (69%)

Yellow (45%)

Brightness & Saturation Gradients

These gradients show how the HunterLab color 47.9592, 56.8194, 0.3499 changes by changing the brightness by 10 percent. The first figure shows a shift by +10% for each color and the second figure -10%.

Similar to the brightness gradients but the following saturation gradients show a change of the HunterLab color 47.9592, 56.8194, 0.3499 by changing the saturation by 10% instead.

47.9592, 56.8194,
0.3499

47.9592, 56.8194,
0.3499

163.6263, 71.6082,
5.5498

38.2035, 54.7045,
-0.0230

69.5678, 60.7720,
1.2423

29.2159, 52.5482,
-0.3428

81.3346, 62.5996,
1.7517

21.0703, 50.4494,
-0.6004

93.6989, 64.3272,
2.2996

13.8650, 48.6972,
-0.7850

106.6331, 65.9585,
2.8840

7.4952, 50.7689,
-1.2020

120.1131, 67.4976,
3.5027

0.0000, INF, NaN

0.0000, NaN, NaN

134.1176, 68.9494,

4.1542

0.0000, NaN, NaN

148.6277, 70.3181,
4.8370

0.0000, NaN, NaN

■ 47.9592, 56.8194,
0.3499

■ 47.9592, 56.8194,
0.3499

■ 44.7176, 63.8601,
2.4652

■ 52.0826, 48.2730,
-0.8392

■ 42.4198, 68.7361,
5.4394

■ 56.9805, 38.8816,
-1.1686

■ 41.0544, 71.0455,
9.0403

■ 62.5424, 29.1285,
-0.7605

■ 40.6112, 71.5293,
10.8825

■ 68.6654, 19.3202,
0.2496

■ 75.2613, 9.6230,
1.7397

■ 82.2581, 0.1117,
3.6103

■ 89.5974, -9.1922,
5.7835

■ 96.7678, -17.5834,
7.6788

■ 97.1741, -15.3107,
1.8860

Harmonies

Analogous

The Analogous color harmony consists of three colors that are next to each other on the color wheel.



47.9605, 45.9906, -30.0101



47.9592, 56.8194, 0.3499



47.9605, 49.1853, 19.4332

Triad

The Triadic color harmony groups three colors that are evenly spaced from another and form a triangle on the color wheel.



47.9605, 56.8158, 0.3512



47.9605, -23.0108, 28.3009



47.9605, -26.2638, -55.4552

Complementary

The Complementary color scheme is a pair of colors which are on the opposite of each other on the color wheel.



47.9592, 56.8194, 0.3499



75.5012, -46.8916, 18.8567

Split Complementary

Split-complementary colors differ from the complementary color scheme. The scheme consists of three colors, the original color and two neighbors of the complement color.



47.9605, -38.7873, -24.0330



47.9592, 56.8194, 0.3499



47.9605, -37.2029, 21.5808

Square

The Square scheme is like the rectangle color scheme, but the four colors are evenly spaced on the color wheel.



47.9605, 56.8158, 0.3512



47.9605, -0.2199, 29.7253



47.9605, -42.3322, 4.7652



47.9605, -4.8593, -71.1325

Rectangle

The Rectangle color scheme consists of four colors that form a rectangle on the color wheel.



47.9592, 56.8194, 0.3499



47.9605, 35.3863, 25.7757



47.9605, -42.3322, 4.7652



47.9605, -31.4670, -45.7831

Sweetspot

The Sweet Spot groups the original color and five complimentary colors.



47.9605, 56.8158, 0.3512



83.6103, 16.9712, 1.0732



42.7421, 52.8914, -69.5768



37.6859, 9.3348, 0.2789

0.0000, NaN, NaN



46.2646, -2.4686, 2.5136

Same Dimension

The Same Dimension uses a secret algorithm to generate beautiful new colors.



47.9605, 56.8158, 0.3512



50.9752, 76.6889, 3.9989



48.1293, 46.5814, 21.5914



37.1426, 2.0185, 1.2865



31.1751, 54.9749, 7.8462



8.3141, 14.8621, 0.5359

Inverse Universe

The Inverse Universe completely reimagines the original color for something new.



47.9605, 56.8158, 0.3512



50.9752, 76.6889, 3.9989



73.9624, -32.0778, -10.9492



37.1426, 2.0185, 1.2865



31.1751, 54.9749, 7.8462



8.3141, 14.8621, 0.5359

Previews

White Background



This preview shows how the HunterLab color 47.9592, 56.8194, 0.3499 looks on a white background.

Color Contrast Check

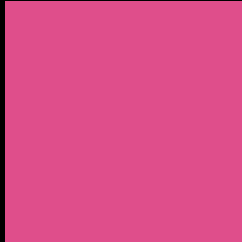
Large Text (above 18pt) WCAG AA ✓ Pass

Any Text WCAG AA × Fail

Large Text (above 18pt) WCAG AAA × Fail

Any Text WCAG AAA × Fail

Black Background



This preview shows how the HunterLab color 47.9592, 56.8194, 0.3499 looks on a black background.

Color Contrast Check

Large Text (above 18pt) WCAG AA ✓ Pass

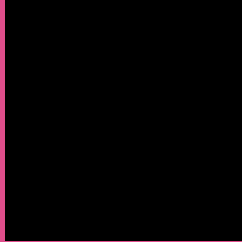
Any Text WCAG AA ✓ Pass

Large Text (above 18pt) WCAG AAA ✓ Pass

Any Text WCAG AAA × Fail

If you want to check with other color combinations, try the [Color Contrast Checker](#).

HunterLab 47.9592, 56.8194, 0.3499 Background



This preview shows how black text looks on a background with the HunterLab color 47.9592, 56.8194, 0.3499.



This preview shows how white text looks on a background with the HunterLab color 47.9592, 56.8194,

0.3499.

Color Blindness Simulation

Color vision deficiency is a very complex topic, and I could not describe the different causes any better than Wikipedia does, so if you want to learn more, you should check out their [article about color blindness](#).

Dichromacy



Original Color

47.9592, 56.8194, 0.3499

Protanopia

48.2853, 2.5388, -18.7480

Deuteranopia

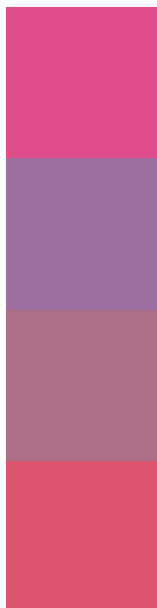
48.0874, 3.3054, 2.7738



Tritanopia

47.9617, 46.4214, 17.2756

Trichromacy



Original Color

47.9592, 56.8194, 0.3499

Protanomaly

46.2933, 20.5027, -14.2999

Deuteranomaly

46.6748, 22.2748, 0.0338

Tritanomaly

47.7897, 50.0984, 12.0231

Monochromacy



Original Color

47.9592, 56.8194, 0.3499

Achromatopsia

46.4608, -2.4790, 2.5243

Achromatomaly

45.3920, 18.2649, -0.2235

CSS Examples

Text

The CSS property to change the color of the text to HunterLab 47.9592, 56.8194, 0.3499 is called "color". The color property can be set on classes, ids or directly on the HTML element.

This example shows how text in the color `rgb(223, 78, 139)` looks like.

```
.text, #text, p{  
    color:rgb(223, 78, 139)  
}
```

If you want to add a text shadow in that color use the text-shadow property, you can generate a text shadow directly with our [CSS Text Shadow Generator](#).

Here you see how black text with a 4 pixel rgb(223, 78, 139) colored shadow looks like.

```
.shadow{ text-shadow: 4px 4px 2px rgb(223, 78, 139) }
```

Border

The CSS property to change the border of an element to HunterLab 47.9592, 56.8194, 0.3499 is called "border". The border property can be set on classes, ids or directly on the HTML element.

This example shows the color as border, it can be applied via the CSS property "border" or "border-color".

```
.border, #border, table{ border:4px solid rgb(223, 78, 139) }
```


If only the border color should be changed use the property `border-color`.

```
.border{ border-color:rgb(223, 78, 139) }
```

If you want to add a box shadow in that color use:

Here you see how a box with a 4 pixel `rgb(223, 78, 139)` colored shadow looks like.

```
.boxshadow{ -moz-box-shadow:4px 4px 4px  
4px rgb(223, 78, 139); -webkit-box-  
shadow:4px 4px 4px 4px rgb(223, 78, 139);  
box-shadow:4px 4px 4px 4px rgb(223, 78,  
139) }
```

Background

The CSS property to change the background color of an element to HunterLab 47.9592, 56.8194, 0.3499 is called "background". The background property can be set on classes, ids or directly on the HTML element.

```
.background, #background, body{  
background: rgb(223, 78, 139) }
```

If only the background color should be changed can be used:

```
.background{ background-color: rgb(223, 78,  
139) }
```

This example shows the color as background, it is applied via the CSS property "background".

To optimize and compress your CSS code, you can use our [online CSS compressor and optimizer](#) based on csstidy. If you want to create a linear or radial gradient as background or border, check our [CSS Gradient Generator](#).

Hey! You found this booklet interesting? Support Converting Colors with the new Membership Option!

The pro membership hides all ads, plus gives you double the colors in the color bucket, and more awesome pro features!

[Learn more, Memberships starting at \\$2.50/m!](#)

**Follow me
on Twitter!**

@ConvertingColor