

Converting Colors

HunterLab(48.1542, 7.3852,
15.5627)

Have a look what the booklet for
HunterLab(48.1542, 7.3852,
15.5627) contains.

HunterLab(48.1556, 7.3658, 15.5752)	3
<i>Conversions</i>	4
<i>Details</i>	6
<i>Harmonies</i>	12
<i>Previews</i>	24
<i>Color Blindness Simulation</i>	28
<i>CSS Examples</i>	31

Color

**HunterLab(48.1556, 7.3658,
15.5752)**

Conversions

Conversions Part 1

Format	Color
Hex	A47C62
RGB	164, 124, 98
RGB Percent	64%, 49%, 38%
CMY	0.3569, 0.5137, 0.6157
CMYK	0.00, 0.24, 0.40, 0.36
HSL	24°, 27%, 51%
HSV	24°, 40%, 64%
XYZ	24.7221, 23.1896, 14.7283
YIQ	132.9960, 32.1860, 0.3940

Conversions

Conversions Part 2

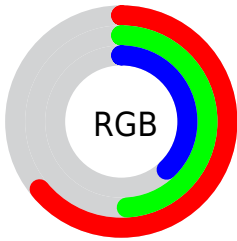
Format	Color
RYB	164, 141, 98
Decimal	10779746
CIELab	55.27, 11.98, 20.21
CIELCh	55, 23.493, 59.342
Yxy	23.1907, 0.3947, 0.3702
Android (android.graphics.Color)	4288969826 (0xFFA47C62)
YUV	132.9960, -17.2530, 27.1905
Hunter-Lab	48.1556, 7.3658, 15.5752

Details

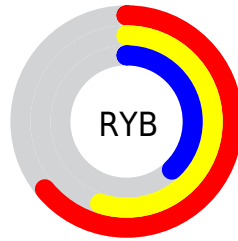
The HunterLab color $48.1556, 7.3658, 15.5752$ is a dark color, and the websafe version is hex 996666 . A complement of this color would be $48.4283, -7.9882, -13.2977$, and the grayscale version is $48.4868, -2.5871, 2.6344$.

A 20% lighter version of the original color is $69.8784, 7.1263, 19.0581$, and $29.3022, 6.8606, 11.8387$ is the 20% darker color. If you saturate the color by 10%, you get $45.3267, 10.6333, 17.7783$, and if you desaturate by 10%, it is $51.1380, 4.3597, 12.9909$.

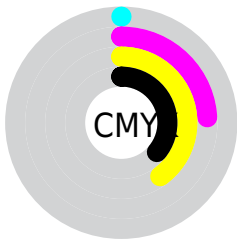
Distribution



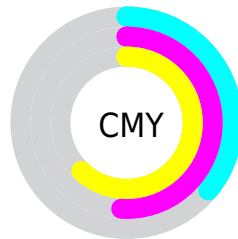
- Red (64%)
- Green (49%)
- Blue (38%)



- Red (64%)
- Yellow (55%)
- Blue (38%)



- Cyan (0%)
- Magenta (24%)
- Yellow (40%)
- Black (36%)



- Cyan (36%)
- Magenta (51%)
- Yellow (62%)

Brightness & Saturation Gradients

These gradients show how the HunterLab color 48.1556, 7.3658, 15.5752 changes by changing the brightness by 10 percent. The first figure shows a shift by +10% for each color and the second figure -10%.

Similar to the brightness gradients but the following saturation gradients show a change of the HunterLab color 48.1556, 7.3658, 15.5752 by changing the saturation by 10% instead.

■ 48.1556, 7.3658,
15.5752

■ 48.1556, 7.3658,
15.5752

163.9216, 5.8723,
30.3603

■ 38.3854, 7.2203,
13.7643

■ 69.7899, 7.4218,
19.0234

■ 29.3823, 6.9850,
11.8615

■ 81.5686, 7.3527,
20.6899

■ 21.2196, 6.6409,
9.8260

■ 93.9442, 7.2263,
22.3317

■ 13.9949, 6.1631,
7.9850

■ 106.8892, 7.0471,
23.9555

■ 7.6369, 6.4274,
5.3459

120.3795, 6.8192,
25.5666

0.0000, NaN, NaN

0.0000, NaN, NaN

134.3940, 6.5456,

27.1691

0.0000, NaN, NaN

148.9137, 6.2292,
28.7661

0.0000, NaN, NaN

■ 48.1556, 7.3658,
15.5752

■ 48.1556, 7.3658,
15.5752

■ 45.3267, 10.6333,
17.7783

■ 51.1380, 4.3597,
12.9909

■ 42.6647, 14.1708,
19.5456

■ 54.2553, 1.6094,
10.0719

■ 40.1891, 17.9642,
20.8245

■ 57.4953, -0.9035,
6.8618

■ 37.9191, 21.9797,
21.5687

■ 60.8464, -3.1978,
3.3976

■ 35.8737, 26.1534,
21.7528

■ 64.2984, -5.2928,
-0.2894

■ 34.1014, 30.2394,
21.5425

■ 67.8424, -7.2073,
-4.1724

■ 71.4706, -8.9589,
-8.2293

■ 75.1764, -10.5639,
-12.4413

■ 78.9540, -12.0368,
-16.7926

Harmonies

Analogous

The Analogous color harmony consists of three colors that are next to each other on the color wheel.



48.1567, 14.8815, 10.5660



48.1556, 7.3658, 15.5752



48.1567, -2.3565, 17.2600

Triad

The Triadic color harmony groups three colors that are evenly spaced from another and form a triangle on the color wheel.



48.1567, 7.3638, 15.5759



48.1567, -19.9189, 2.8257



48.1567, 6.9617, -15.6571

Complementary

The Complementary color scheme is a pair of colors which are on the opposite of each other on the color wheel.



48.1556, 7.3658, 15.5752



48.4283, -7.9882, -13.2977

Split Complementary

Split-complementary colors differ from the complementary color scheme. The scheme consists of three colors, the original color and two neighbors of the complement color.



48.1567, -2.7873, -18.8349



48.1556, 7.3658, 15.5752



48.1567, -17.8471, -6.9606

Square

The Square scheme is like the rectangle color scheme, but the four colors are evenly spaced on the color wheel.



48.1567, 7.3638, 15.5759



48.1567, -17.6593, 10.8562



48.1567, -11.7625, -15.3788



48.1567, 14.6367, -7.3865

Rectangle

The Rectangle color scheme consists of four colors that form a rectangle on the color wheel.



48.1556, 7.3658, 15.5752



48.1567, -8.6245, 16.5936



48.1567, -11.7625, -15.3788



48.1567, 3.7948, -17.4215

Sweetspot

The Sweet Spot groups the original color and five complimentary colors.



48.1567, 7.3638, 15.5759



76.5847, -0.5703, 10.1309



42.9923, 25.7209, -6.5856



35.5591, -0.0790, 4.9870



90.9709, -4.8540, 4.9426



38.3822, -2.0480, 2.0854

Same Dimension

The Same Dimension uses a secret algorithm to generate beautiful new colors.



48.1567, 7.3638, 15.5759



61.5664, 13.7147, 23.5871



57.1420, -7.9923, 23.0808



27.4271, -0.5397, 3.0990



30.0072, 26.0989, 18.9472



5.2899, 1.6417, 3.2883

Inverse Universe

The Inverse Universe completely reimagines the original color for something new.



48.4283, -7.9882, -13.2977



61.9860, -11.0166, -22.9770



39.4000, 7.4390, -28.4439



27.4600, -2.2874, -0.1832



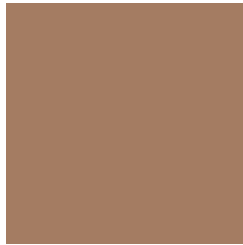
30.0802, -1.4027, -34.5695



5.2759, -1.6021, -3.1361

Previews

White Background



This preview shows how the HunterLab color 48.1556, 7.3658, 15.5752 looks on a white background.

Color Contrast Check

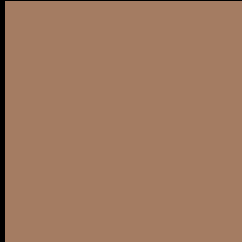
Large Text (above 18pt) WCAG AA ✓ Pass

Any Text WCAG AA × Fail

Large Text (above 18pt) WCAG AAA × Fail

Any Text WCAG AAA × Fail

Black Background



This preview shows how the HunterLab color 48.1556, 7.3658, 15.5752 looks on a black background.

Color Contrast Check

Large Text (above 18pt) WCAG AA ✓ Pass

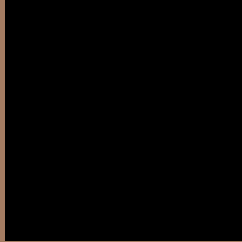
Any Text WCAG AA ✓ Pass

Large Text (above 18pt) WCAG AAA ✓ Pass

Any Text WCAG AAA × Fail

If you want to check with other color combinations, try the [Color Contrast Checker](#).

HunterLab 48.1556, 7.3658, 15.5752 Background



This preview shows how black text looks on a background with the HunterLab color 48.1556, 7.3658, 15.5752.



This preview shows how white text looks on a background with the HunterLab color 48.1556, 7.3658,

Color Blindness Simulation

Color vision deficiency is a very complex topic, and I could not describe the different causes any better than Wikipedia does, so if you want to learn more, you should check out their [article about color blindness](#).

Dichromacy



Original Color

48.1556, 7.3658, 15.5752

Protanopia

48.1795, -3.5293, 14.1570

Deuteranopia

48.1767, 3.3229, 15.8263



Tritanopia

48.2010, 14.2109, 4.4032

Trichromacy



Original Color

48.1556, 7.3658, 15.5752

Protanomaly

48.0876, 0.3941, 14.4581

Deuteranomaly

48.2269, 4.8613, 15.8987

Tritanomaly

48.0518, 11.8733, 8.6691

Monochromacy



Original Color

48.1556, 7.3658, 15.5752

Achromatopsia

48.4304, -2.5841, 2.6313

Achromatomaly

48.2189, 0.2949, 7.8683

CSS Examples

Text

The CSS property to change the color of the text to HunterLab 48.1556, 7.3658, 15.5752 is called "color". The color property can be set on classes, ids or directly on the HTML element.

This example shows how text in the color `rgb(164, 124, 98)` looks like.

```
.text, #text, p{  
    color:rgb(164, 124, 98)  
}
```

If you want to add a text shadow in that color use the text-shadow property, you can generate a text shadow directly with our [CSS Text Shadow Generator](#).

Here you see how black text with a 4 pixel rgb(164, 124, 98) colored shadow looks like.

```
.shadow{ text-shadow: 4px 4px 2px rgb(164, 124, 98) }
```

Border

The CSS property to change the border of an element to HunterLab 48.1556, 7.3658, 15.5752 is called "border". The border property can be set on classes, ids or directly on the HTML element.

This example shows the color as border, it can be applied via the CSS property "border" or "border-color".

```
.border, #border, table{ border:4px solid rgb(164, 124, 98) }
```


If only the border color should be changed use the property `border-color`.

```
.border{ border-color:rgb(164, 124, 98) }
```

If you want to add a box shadow in that color use:

Here you see how a box with a 4 pixel `rgb(164, 124, 98)` colored shadow looks like.

```
.boxshadow{ -moz-box-shadow:4px 4px 4px  
4px rgb(164, 124, 98); -webkit-box-  
shadow:4px 4px 4px 4px rgb(164, 124, 98);  
box-shadow:4px 4px 4px 4px rgb(164, 124,  
98) }
```

Background

The CSS property to change the background color of an element to HunterLab 48.1556, 7.3658, 15.5752 is called "background". The background property can be set on classes, ids or directly on the HTML element.

```
.background, #background, body{  
background: rgb(164, 124, 98) }
```

If only the background color should be changed can be used:

```
.background{ background-color: rgb(164,  
124, 98) }
```

This example shows the color as background, it is applied via the CSS property "background".

To optimize and compress your CSS code, you can use our [online CSS compressor and optimizer](#) based on csstidy. If you want to create a linear or radial gradient as background or border, check our [CSS Gradient Generator](#).

Hey! You found this booklet interesting? Support Converting Colors with the new Membership Option!

The pro membership hides all ads, plus gives you double the colors in the color bucket, and more awesome pro features!

[Learn more, Memberships starting at \\$2.50/m!](#)

**Follow me
on Twitter!**

@ConvertingColor